

HALLIBURTON

iCem[®] Service

VERDAD OIL & GAS CORP

For: Jason Hansen

Date: Tuesday, July 18, 2017

Truck Operator 11826999 Elite Spencer Torrey

Job Date: Tuesday, July 18, 2017

Sincerely,

Steve Markovich

Legal Notice

Disclaimer:

All information in this report is provided subject to the terms and conditions which govern the services provided by Halliburton. Halliburton personnel use their best efforts in gathering information and their best judgment in interpreting it, but any interpretation, research, analysis or recommendation furnished by Halliburton are opinions based upon inferences from measurements and empirical relationships and assumptions, which inferences and empirical relationships and assumptions are not infallible, and with respect to which professionals in the industry may differ. Accordingly, HALLIBURTON IS UNABLE TO GUARANTEE THE ACCURACY OF ANY CHART INTERPRETATION, RESEARCH ANALYSIS, OR JOB RECOMMENDATION and any interpretation or recommendation is not for use of or reliance upon by any third party. The customer has full responsibility for any of its decisions which are based on the information provided in this report.

Table of Contents

Real-Time Job Summary 4

 Job Event Log.....4

Attachments..... 7

 Truck Operator 11826999 Elite Spencer Torrey-Custom Results.png.....7

Custom Graphs..... 8

 Custom Graph.....8

1.0 Real-Time Job Summary

1.1 Job Event Log

Type	Seq. No.	Activity	Graph Label	Date	Time	Source	DH Density (ppg)	DS Pump Press (psi)	Comb Pump Rate (bbl/min)	Pump Stg Tot (bbl)	Comments
Event	1	Start Job	Start Job	7/18/2017	03:16:29	COM4	8.35	2.00	0.00	15.80	TD 14815' TP 14805' FC 14721.92' 5 1/2 20# csg 8 1/2 openhole 9 5/8 surcsg 1744'. Water test. PH 7 Hardness >70 Iron 0 Sulfates >200 Chlorides 0
Event	2	Test Lines	Test Lines	7/18/2017	03:22:50	COM4	8.41	61.00	0.00	18.90	Perform 500psi kick out test. Kick outs work. Bring pressure up to 5000psi and hold.
Event	3	Check Weight	Check Weight	7/18/2017	03:57:19	COM4	8.35	3.00	0.00	3.40	Weight verified by pressurized scales
Event	4	Pump Spacer 1	Pump Spacer 1	7/18/2017	04:00:14	COM4	8.11	11.00	1.30	3.50	Pump 40bbls of 11.5ppg 3.82 yield Tuned Spacer. Added 30 gallons of Dual surf B and Musol A on the fly, Pumped at 2.5 bbl/min 55psi.
Event	5	Check Weight	Check Weight	7/18/2017	04:02:07	COM4	11.88	131.00	2.50	3.10	Weight verified by pressurized scales
Event	6	Drop Bottom Plug	Drop Bottom Plug	7/18/2017	04:17:37	COM4	11.62	27.00	0.00	37.20	Plug loaded into HES head and verified when plug was dropped.
Event	7	Pump Cement	Pump Cement	7/18/2017	04:20:10	COM4	12.32	29.00	2.10	0.00	Pump 311.2bbls (1113sks) of 13.2ppg 1.57yield Lead Cement. Pumped at 8bbl/min 471psi.

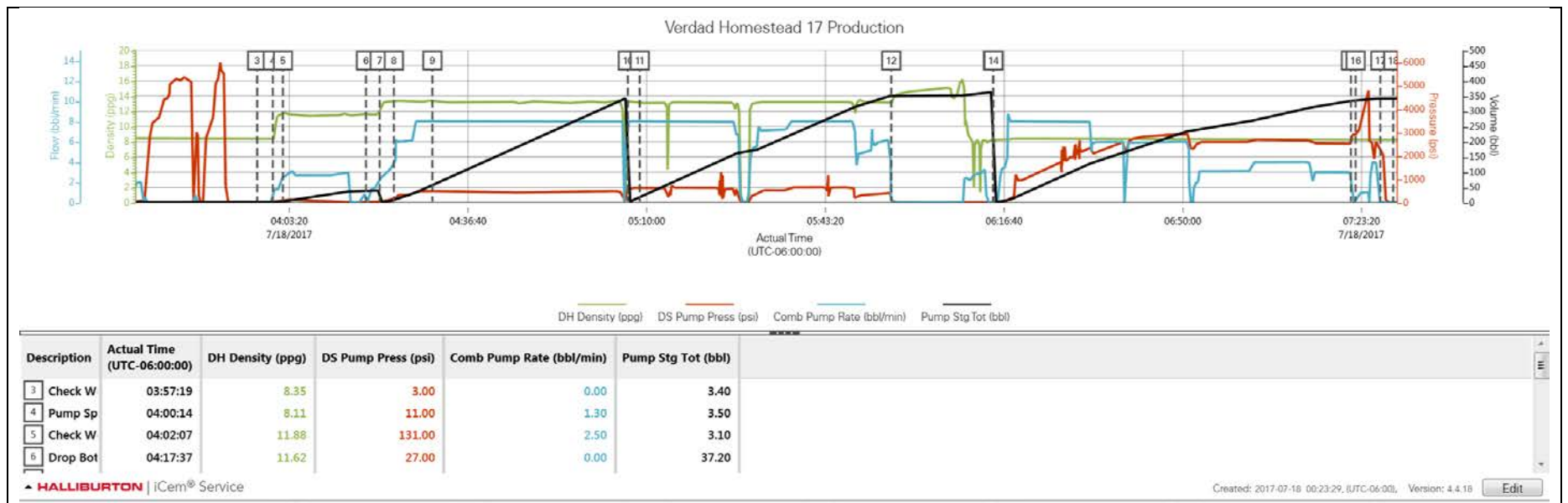
Event	8	Check Weight	Check Weight	7/18/2017	04:22:49	COM4	13.26	149.00	4.00	8.10	Weight verified by pressurized scales.
Event	9	Check Weight	Check Weight	7/18/2017	04:30:00	COM4	13.31	493.00	8.00	57.50	Weight verified by pressurized scales.
Event	10	Pump Tail Cement	Pump Tail Cement	7/18/2017	05:06:28	COM4	13.40	543.00	8.10	344.90	Pump 331.35bbls (912sks) of 13.2ppg 2.04yield Tail Cement. Pumped at 8bbl/min 633psi.
Event	11	Check Weight	Check Weight	7/18/2017	05:08:41	COM4	13.12	635.00	8.00	17.70	Weight verified by pressurized scales.
Event	12	Shutdown	Shutdown	7/18/2017	05:55:36	COM4	13.18	140.00	0.00	351.50	Shutdown to clean pumps and lines and have rig blow down lines.
Event	13	Drop Top Plug	Drop Top Plug	7/18/2017	06:14:34	COM4	8.22	-4.00	0.00	362.60	Plug loaded into HES head and drop was verified by company rep.
Event	14	Pump Displacement	Pump Displacement	7/18/2017	06:14:40	COM4	8.22	-4.00	0.00	362.60	Pump 325bbls of H2O. First 20bbls with MCCR and the next 305 with biocide added. Pumped at 8bbls/min. At 140 away slowed down to 6bbls/min. Spacer to surface at 220 away. Cement to surface at 260 away bringing 65bbls of cement to surface.
Event	15	Bump Plug	Bump Plug	7/18/2017	07:21:21	COM4	8.31	2529.00	3.00	334.50	Final lift pressure was 2529psi. Took 500psi over and re set kick outs to shift sleeve.
Event	16	Pressure Up Well	Pressure Up	7/18/2017	07:22:13	USER	8.32	2909.00	0.00	334.90	Pressure up to shift sleeve. Sleeve shifted at 4825psi. Pumped 5bbl wet shoe at 4bbl/min and 2500psi.
Event	17	Check Floats	Check Floats	7/18/2017	07:26:50	USER	8.30	2204.00	0.00	342.40	Opened release line to check floats. After 2bbls of

water back to the truck the
floats held.

Event	18	End Job	End Job	7/18/2017	07:29:14	COM4	Thank you Steve Markovich and Crew
-------	----	---------	---------	-----------	----------	------	---------------------------------------

2.0 Attachments

2.1 Truck Operator 11826999 Elite Spencer Torrey-Custom Results.png



3.0 Custom Graphs

3.1 Custom Graph

