

VERDAD RESOURCES

WATTENBERG FIELD

9N-59W-08 TIMBRO 9-59-8B PAD

TIMBRO 9-59 8B-9-2

Wellbore #1

Plan: Design #2

Standard Planning Report

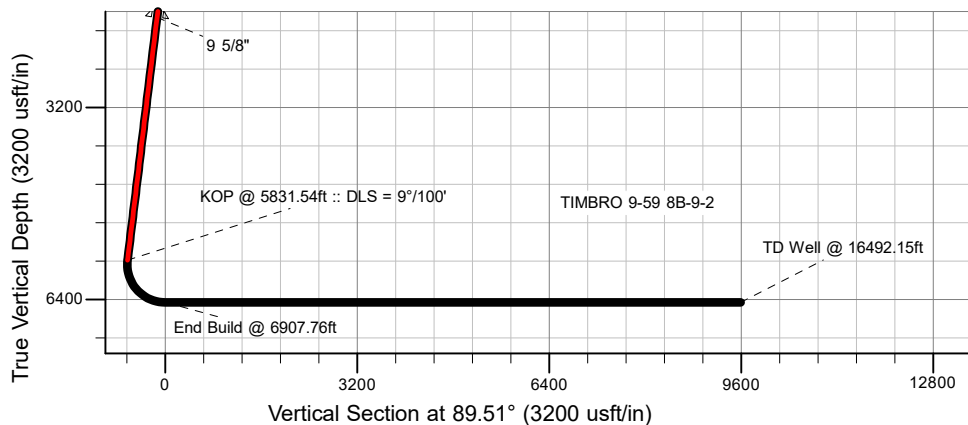
23 April, 2019

Project: WATTENBERG FIELD
 Site: 9N-59W-08 TIMBRO 9-59-8B PAD
 Well: TIMBRO 9-59 8B-9-2
 Wellbore: Wellbore #1
 Design: Design #2

VERDAD RESOURCES

CASING DETAILS

TVD	MD	Name	Size
1700.00	1717.97	9 5/8"	9-5/8

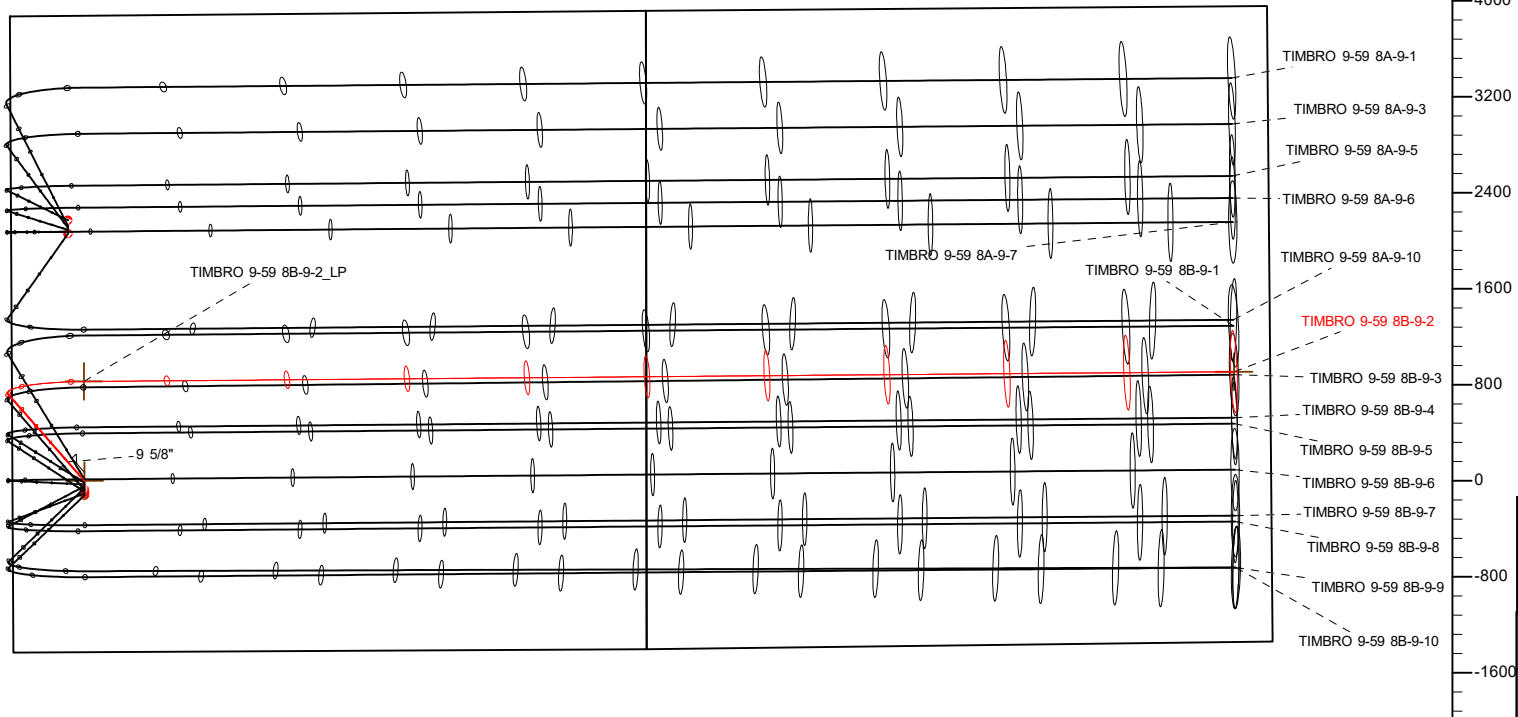
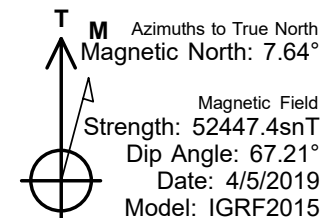
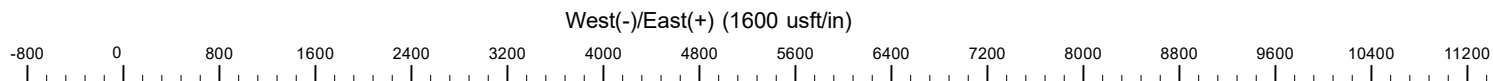


SECTION DETAILS

Sec	MD	Inc	Azi	TVD	+N/-S	+E/-W	Dleg	TFace	VSec	Target
1	0.00	0.00	0.00	0.00	0.00	0.00	0.00	0.00	0.00	
2	300.00	0.00	0.00	300.00	0.00	0.00	0.00	0.00	0.00	
3	826.50	10.53	318.70	823.54	36.24	-31.84	2.00	318.70	-31.53	
4	5831.54	10.53	318.70	5744.29	723.41	-635.53	0.00	0.00	-629.32	
5	6907.76	90.00	89.51	6450.00	828.07	-4.33	9.00	130.33	2.75	
6	16492.15	90.00	89.51	6450.00	909.79	9579.71	0.00	0.00	9587.14	TIMBRO 9-59 8B-9-2_BHL

WELLBORE TARGET DETAILS (LAT/LONG)

Name	TVD	+N/-S	+E/-W	Latitude	Longitude
TIMBRO 9-59 8B-9-2_SHL	0.00	0.00	0.00	40.761654	-104.009524
TIMBRO 9-59 8B-9-2_BHL	6450.00	909.79	9579.71	40.764146	-103.974942



SHL
 1428' FSL
 600' FWL

LP
 2257' FSL
 600' FWL

BHL
 2252' FSL
 300' FEL

WELL DETAILS: TIMBRO 9-59 8B-9-2

GL = 5045'
 RKB = 24' @ 5069.00usft (RIG)

Plan: Design #2 (TIMBRO 9-59 8B-9-2/Wellbore #1)

Date: 4/23/2019

Hewlett-Packard

Planning Report

Database:	EDM 5000.14 Single User Db	Local Co-ordinate Reference:	Well TIMBRO 9-59 8B-9-2
Company:	VERDAD RESOURCES	TVD Reference:	RKB = 24' @ 5069.00usft (RIG)
Project:	WATTENBERG FIELD	MD Reference:	RKB = 24' @ 5069.00usft (RIG)
Site:	9N-59W-08 TIMBRO 9-59-8B PAD	North Reference:	True
Well:	TIMBRO 9-59 8B-9-2	Survey Calculation Method:	Minimum Curvature
Wellbore:	Wellbore #1		
Design:	Design #2		

Project	WATTENBERG FIELD		
Map System:	US State Plane 1983	System Datum:	Mean Sea Level
Geo Datum:	North American Datum 1983		
Map Zone:	Colorado Northern Zone		

Site		9N-59W-08 TIMBRO 9-59-8B PAD			
Site Position:		Northing:	1,523,800.83 usft	Latitude:	40.761695
From:	Lat/Long	Easting:	3,412,878.72 usft	Longitude:	-104.009524
Position Uncertainty:	0.00 usft	Slot Radius:	13-3/16 "	Grid Convergence:	0.96 °

Well	TIMBRO 9-59 8B-9-2					
Well Position	+N/-S	-14.94 usft	Northing:	1,523,785.89 usft	Latitude:	40.761654
	+E/-W	0.00 usft	Easting:	3,412,878.97 usft	Longitude:	-104.009524
Position Uncertainty		3.28 usft	Wellhead Elevation:		Ground Level:	5,045.00 usft

Wellbore	Wellbore #1				
Magnetics	Model Name	Sample Date	Declination (°)	Dip Angle (°)	Field Strength (nT)
	IGRF2015	4/5/2019	7.64	67.21	52,447.38779967

Design	Design #2			
Audit Notes:				
Version:	Phase:	PLAN	Tie On Depth:	0.00
Vertical Section:	Depth From (TVD) (usft)	+N/-S (usft)	+E/-W (usft)	Direction (°)
	0.00	0.00	0.00	89.51

Plan Survey Tool Program	Date	4/23/2019		
Depth From (usft)	Depth To (usft)	Survey (Wellbore)	Tool Name	Remarks
1	0.00	1,700.00	Design #2 (Wellbore #1)	ISCWSA REV 2 MWD Fixed:v2:standard declination
2	1,700.00	16,492.15	Design #2 (Wellbore #1)	ISCWSA REV 2 MWD Fixed:v2:standard declination

Plan Sections										
Measured Depth (usft)	Inclination (°)	Azimuth (°)	Vertical Depth (usft)	+N/-S (usft)	+E/-W (usft)	Dogleg Rate (°/100usft)	Build Rate (°/100usft)	Turn Rate (°/100usft)	TFO (°)	Target
0.00	0.00	0.00	0.00	0.00	0.00	0.00	0.00	0.00	0.00	
300.00	0.00	0.00	300.00	0.00	0.00	0.00	0.00	0.00	0.00	
826.50	10.53	318.70	823.54	36.24	-31.84	2.00	2.00	0.00	318.70	
5,831.54	10.53	318.70	5,744.29	723.41	-635.53	0.00	0.00	0.00	0.00	
6,907.76	90.00	89.51	6,450.00	828.07	-4.33	9.00	7.38	12.15	130.33	
16,492.15	90.00	89.51	6,450.00	909.79	9,579.71	0.00	0.00	0.00	0.00	TIMBRO 9-59 8B-9-2

Hewlett-Packard

Planning Report

Database:	EDM 5000.14 Single User Db	Local Co-ordinate Reference:	Well TIMBRO 9-59 8B-9-2
Company:	VERDAD RESOURCES	TVD Reference:	RKB = 24' @ 5069.00usft (RIG)
Project:	WATTENBERG FIELD	MD Reference:	RKB = 24' @ 5069.00usft (RIG)
Site:	9N-59W-08 TIMBRO 9-59-8B PAD	North Reference:	True
Well:	TIMBRO 9-59 8B-9-2	Survey Calculation Method:	Minimum Curvature
Wellbore:	Wellbore #1		
Design:	Design #2		

Planned Survey									
Measured Depth (usft)	Inclination (°)	Azimuth (°)	Vertical Depth (usft)	+N/-S (usft)	+E/-W (usft)	Vertical Section (usft)	Dogleg Rate (°/100usft)	Build Rate (°/100usft)	Turn Rate (°/100usft)
0.00	0.00	0.00	0.00	0.00	0.00	0.00	0.00	0.00	0.00
100.00	0.00	0.00	100.00	0.00	0.00	0.00	0.00	0.00	0.00
200.00	0.00	0.00	200.00	0.00	0.00	0.00	0.00	0.00	0.00
300.00	0.00	0.00	300.00	0.00	0.00	0.00	0.00	0.00	0.00
Begin Nudge @ 300.00ft									
400.00	2.00	318.70	399.98	1.31	-1.15	-1.14	2.00	2.00	0.00
500.00	4.00	318.70	499.84	5.24	-4.61	-4.56	2.00	2.00	0.00
600.00	6.00	318.70	599.45	11.79	-10.36	-10.26	2.00	2.00	0.00
700.00	8.00	318.70	698.70	20.95	-18.40	-18.22	2.00	2.00	0.00
800.00	10.00	318.70	797.47	32.70	-28.72	-28.44	2.00	2.00	0.00
826.50	10.53	318.70	823.54	36.24	-31.84	-31.53	2.00	2.00	0.00
Hold Tangent @ 826.50ft									
900.00	10.53	318.70	895.80	46.34	-40.71	-40.31	0.00	0.00	0.00
1,000.00	10.53	318.70	994.12	60.07	-52.77	-52.25	0.00	0.00	0.00
1,100.00	10.53	318.70	1,092.44	73.79	-64.83	-64.20	0.00	0.00	0.00
1,200.00	10.53	318.70	1,190.75	87.52	-76.89	-76.14	0.00	0.00	0.00
1,300.00	10.53	318.70	1,289.07	101.25	-88.95	-88.08	0.00	0.00	0.00
1,400.00	10.53	318.70	1,387.38	114.98	-101.01	-100.03	0.00	0.00	0.00
1,500.00	10.53	318.70	1,485.70	128.71	-113.08	-111.97	0.00	0.00	0.00
1,600.00	10.53	318.70	1,584.01	142.44	-125.14	-123.92	0.00	0.00	0.00
1,700.00	10.53	318.70	1,682.33	156.17	-137.20	-135.86	0.00	0.00	0.00
1,717.97	10.53	318.70	1,700.00	158.64	-139.37	-138.01	0.00	0.00	0.00
9 5/8"									
1,800.00	10.53	318.70	1,780.65	169.90	-149.26	-147.80	0.00	0.00	0.00
1,900.00	10.53	318.70	1,878.96	183.63	-161.32	-159.75	0.00	0.00	0.00
2,000.00	10.53	318.70	1,977.28	197.36	-173.38	-171.69	0.00	0.00	0.00
2,100.00	10.53	318.70	2,075.59	211.09	-185.45	-183.63	0.00	0.00	0.00
2,200.00	10.53	318.70	2,173.91	224.82	-197.51	-195.58	0.00	0.00	0.00
2,300.00	10.53	318.70	2,272.23	238.55	-209.57	-207.52	0.00	0.00	0.00
2,400.00	10.53	318.70	2,370.54	252.28	-221.63	-219.46	0.00	0.00	0.00
2,500.00	10.53	318.70	2,468.86	266.01	-233.69	-231.41	0.00	0.00	0.00
2,600.00	10.53	318.70	2,567.17	279.74	-245.75	-243.35	0.00	0.00	0.00
2,700.00	10.53	318.70	2,665.49	293.46	-257.81	-255.30	0.00	0.00	0.00
2,800.00	10.53	318.70	2,763.81	307.19	-269.88	-267.24	0.00	0.00	0.00
2,900.00	10.53	318.70	2,862.12	320.92	-281.94	-279.18	0.00	0.00	0.00
3,000.00	10.53	318.70	2,960.44	334.65	-294.00	-291.13	0.00	0.00	0.00
3,100.00	10.53	318.70	3,058.75	348.38	-306.06	-303.07	0.00	0.00	0.00
3,200.00	10.53	318.70	3,157.07	362.11	-318.12	-315.01	0.00	0.00	0.00
3,300.00	10.53	318.70	3,255.39	375.84	-330.18	-326.96	0.00	0.00	0.00
3,400.00	10.53	318.70	3,353.70	389.57	-342.25	-338.90	0.00	0.00	0.00
3,500.00	10.53	318.70	3,452.02	403.30	-354.31	-350.85	0.00	0.00	0.00
3,600.00	10.53	318.70	3,550.33	417.03	-366.37	-362.79	0.00	0.00	0.00
3,700.00	10.53	318.70	3,648.65	430.76	-378.43	-374.73	0.00	0.00	0.00
3,800.00	10.53	318.70	3,746.97	444.49	-390.49	-386.68	0.00	0.00	0.00
3,900.00	10.53	318.70	3,845.28	458.22	-402.55	-398.62	0.00	0.00	0.00
4,000.00	10.53	318.70	3,943.60	471.95	-414.62	-410.56	0.00	0.00	0.00
4,100.00	10.53	318.70	4,041.91	485.68	-426.68	-422.51	0.00	0.00	0.00
4,200.00	10.53	318.70	4,140.23	499.41	-438.74	-434.45	0.00	0.00	0.00
4,300.00	10.53	318.70	4,238.55	513.13	-450.80	-446.39	0.00	0.00	0.00
4,400.00	10.53	318.70	4,336.86	526.86	-462.86	-458.34	0.00	0.00	0.00
4,500.00	10.53	318.70	4,435.18	540.59	-474.92	-470.28	0.00	0.00	0.00
4,600.00	10.53	318.70	4,533.49	554.32	-486.98	-482.23	0.00	0.00	0.00
4,700.00	10.53	318.70	4,631.81	568.05	-499.05	-494.17	0.00	0.00	0.00

Hewlett-Packard

Planning Report

Database:	EDM 5000.14 Single User Db	Local Co-ordinate Reference:	Well TIMBRO 9-59 8B-9-2
Company:	VERDAD RESOURCES	TVD Reference:	RKB = 24' @ 5069.00usft (RIG)
Project:	WATTENBERG FIELD	MD Reference:	RKB = 24' @ 5069.00usft (RIG)
Site:	9N-59W-08 TIMBRO 9-59-8B PAD	North Reference:	True
Well:	TIMBRO 9-59 8B-9-2	Survey Calculation Method:	Minimum Curvature
Wellbore:	Wellbore #1		
Design:	Design #2		

Planned Survey									
Measured Depth (usft)	Inclination (°)	Azimuth (°)	Vertical Depth (usft)	+N/-S (usft)	+E/-W (usft)	Vertical Section (usft)	Dogleg Rate (°/100usft)	Build Rate (°/100usft)	Turn Rate (°/100usft)
4,800.00	10.53	318.70	4,730.12	581.78	-511.11	-506.11	0.00	0.00	0.00
4,900.00	10.53	318.70	4,828.44	595.51	-523.17	-518.06	0.00	0.00	0.00
5,000.00	10.53	318.70	4,926.76	609.24	-535.23	-530.00	0.00	0.00	0.00
5,100.00	10.53	318.70	5,025.07	622.97	-547.29	-541.94	0.00	0.00	0.00
5,200.00	10.53	318.70	5,123.39	636.70	-559.35	-553.89	0.00	0.00	0.00
5,300.00	10.53	318.70	5,221.70	650.43	-571.42	-565.83	0.00	0.00	0.00
5,400.00	10.53	318.70	5,320.02	664.16	-583.48	-577.78	0.00	0.00	0.00
5,500.00	10.53	318.70	5,418.34	677.89	-595.54	-589.72	0.00	0.00	0.00
5,600.00	10.53	318.70	5,516.65	691.62	-607.60	-601.66	0.00	0.00	0.00
5,700.00	10.53	318.70	5,614.97	705.35	-619.66	-613.61	0.00	0.00	0.00
5,800.00	10.53	318.70	5,713.28	719.08	-631.72	-625.55	0.00	0.00	0.00
5,831.54	10.53	318.70	5,744.29	723.41	-635.53	-629.32	0.00	0.00	0.00
KOP @ 5831.54ft :: DLS = 9°/100'									
5,900.00	8.04	354.51	5,811.91	732.88	-640.12	-633.83	9.00	-3.64	52.31
6,000.00	11.52	45.84	5,910.61	746.82	-633.61	-627.20	9.00	3.48	51.33
6,100.00	19.01	65.42	6,007.08	760.58	-611.60	-605.07	9.00	7.50	19.58
6,200.00	27.41	73.77	6,098.92	773.82	-574.61	-567.97	9.00	8.40	8.36
6,300.00	36.08	78.38	6,183.89	786.21	-523.56	-516.81	9.00	8.67	4.61
6,400.00	44.87	81.39	6,259.89	797.44	-459.70	-452.86	9.00	8.79	3.01
6,500.00	53.72	83.58	6,325.05	807.25	-384.62	-377.70	9.00	8.85	2.20
6,600.00	62.59	85.33	6,377.76	815.39	-300.15	-293.16	9.00	8.88	1.75
6,700.00	71.49	86.81	6,416.73	821.65	-208.38	-201.34	9.00	8.90	1.48
6,800.00	80.40	88.15	6,440.99	825.89	-111.57	-104.50	9.00	8.91	1.34
6,900.00	89.31	89.41	6,449.95	828.00	-12.09	-5.01	9.00	8.91	1.27
6,907.76	90.00	89.51	6,450.00	828.07	-4.33	2.75	9.00	8.91	1.25
End Build @ 6907.76ft									
7,000.00	90.00	89.51	6,450.00	828.86	87.90	94.99	0.00	0.00	0.00
7,100.00	90.00	89.51	6,450.00	829.71	187.90	194.99	0.00	0.00	0.00
7,200.00	90.00	89.51	6,450.00	830.57	287.89	294.99	0.00	0.00	0.00
7,300.00	90.00	89.51	6,450.00	831.42	387.89	394.99	0.00	0.00	0.00
7,400.00	90.00	89.51	6,450.00	832.27	487.89	494.99	0.00	0.00	0.00
7,500.00	90.00	89.51	6,450.00	833.12	587.88	594.99	0.00	0.00	0.00
7,600.00	90.00	89.51	6,450.00	833.98	687.88	694.99	0.00	0.00	0.00
7,700.00	90.00	89.51	6,450.00	834.83	787.88	794.99	0.00	0.00	0.00
7,800.00	90.00	89.51	6,450.00	835.68	887.87	894.99	0.00	0.00	0.00
7,900.00	90.00	89.51	6,450.00	836.53	987.87	994.99	0.00	0.00	0.00
8,000.00	90.00	89.51	6,450.00	837.39	1,087.87	1,094.99	0.00	0.00	0.00
8,100.00	90.00	89.51	6,450.00	838.24	1,187.86	1,194.99	0.00	0.00	0.00
8,200.00	90.00	89.51	6,450.00	839.09	1,287.86	1,294.99	0.00	0.00	0.00
8,300.00	90.00	89.51	6,450.00	839.94	1,387.85	1,394.99	0.00	0.00	0.00
8,400.00	90.00	89.51	6,450.00	840.80	1,487.85	1,494.99	0.00	0.00	0.00
8,500.00	90.00	89.51	6,450.00	841.65	1,587.85	1,594.99	0.00	0.00	0.00
8,600.00	90.00	89.51	6,450.00	842.50	1,687.84	1,694.99	0.00	0.00	0.00
8,700.00	90.00	89.51	6,450.00	843.35	1,787.84	1,794.99	0.00	0.00	0.00
8,800.00	90.00	89.51	6,450.00	844.21	1,887.84	1,894.99	0.00	0.00	0.00
8,900.00	90.00	89.51	6,450.00	845.06	1,987.83	1,994.99	0.00	0.00	0.00
9,000.00	90.00	89.51	6,450.00	845.91	2,087.83	2,094.99	0.00	0.00	0.00
9,100.00	90.00	89.51	6,450.00	846.77	2,187.83	2,194.99	0.00	0.00	0.00
9,200.00	90.00	89.51	6,450.00	847.62	2,287.82	2,294.99	0.00	0.00	0.00
9,300.00	90.00	89.51	6,450.00	848.47	2,387.82	2,394.99	0.00	0.00	0.00
9,400.00	90.00	89.51	6,450.00	849.32	2,487.82	2,494.99	0.00	0.00	0.00
9,500.00	90.00	89.51	6,450.00	850.18	2,587.81	2,594.99	0.00	0.00	0.00
9,600.00	90.00	89.51	6,450.00	851.03	2,687.81	2,694.99	0.00	0.00	0.00
9,700.00	90.00	89.51	6,450.00	851.88	2,787.80	2,794.99	0.00	0.00	0.00

Hewlett-Packard

Planning Report

Database:	EDM 5000.14 Single User Db	Local Co-ordinate Reference:	Well TIMBRO 9-59 8B-9-2
Company:	VERDAD RESOURCES	TVD Reference:	RKB = 24' @ 5069.00usft (RIG)
Project:	WATTENBERG FIELD	MD Reference:	RKB = 24' @ 5069.00usft (RIG)
Site:	9N-59W-08 TIMBRO 9-59-8B PAD	North Reference:	True
Well:	TIMBRO 9-59 8B-9-2	Survey Calculation Method:	Minimum Curvature
Wellbore:	Wellbore #1		
Design:	Design #2		

Planned Survey										
Measured Depth (usft)	Inclination (°)	Azimuth (°)	Vertical Depth (usft)	+N/-S (usft)	+E/-W (usft)	Vertical Section (usft)	Dogleg Rate (°/100usft)	Build Rate (°/100usft)	Turn Rate (°/100usft)	
9,800.00	90.00	89.51	6,450.00	852.73	2,887.80	2,894.99	0.00	0.00	0.00	
9,900.00	90.00	89.51	6,450.00	853.59	2,987.80	2,994.99	0.00	0.00	0.00	
10,000.00	90.00	89.51	6,450.00	854.44	3,087.79	3,094.99	0.00	0.00	0.00	
10,100.00	90.00	89.51	6,450.00	855.29	3,187.79	3,194.99	0.00	0.00	0.00	
10,200.00	90.00	89.51	6,450.00	856.14	3,287.79	3,294.99	0.00	0.00	0.00	
10,300.00	90.00	89.51	6,450.00	857.00	3,387.78	3,394.99	0.00	0.00	0.00	
10,400.00	90.00	89.51	6,450.00	857.85	3,487.78	3,494.99	0.00	0.00	0.00	
10,500.00	90.00	89.51	6,450.00	858.70	3,587.78	3,594.99	0.00	0.00	0.00	
10,600.00	90.00	89.51	6,450.00	859.55	3,687.77	3,694.99	0.00	0.00	0.00	
10,700.00	90.00	89.51	6,450.00	860.41	3,787.77	3,794.99	0.00	0.00	0.00	
10,800.00	90.00	89.51	6,450.00	861.26	3,887.76	3,894.99	0.00	0.00	0.00	
10,900.00	90.00	89.51	6,450.00	862.11	3,987.76	3,994.99	0.00	0.00	0.00	
11,000.00	90.00	89.51	6,450.00	862.96	4,087.76	4,094.99	0.00	0.00	0.00	
11,100.00	90.00	89.51	6,450.00	863.82	4,187.75	4,194.99	0.00	0.00	0.00	
11,200.00	90.00	89.51	6,450.00	864.67	4,287.75	4,294.99	0.00	0.00	0.00	
11,300.00	90.00	89.51	6,450.00	865.52	4,387.75	4,394.99	0.00	0.00	0.00	
11,400.00	90.00	89.51	6,450.00	866.37	4,487.74	4,494.99	0.00	0.00	0.00	
11,500.00	90.00	89.51	6,450.00	867.23	4,587.74	4,594.99	0.00	0.00	0.00	
11,600.00	90.00	89.51	6,450.00	868.08	4,687.74	4,694.99	0.00	0.00	0.00	
11,700.00	90.00	89.51	6,450.00	868.93	4,787.73	4,794.99	0.00	0.00	0.00	
11,800.00	90.00	89.51	6,450.00	869.79	4,887.73	4,894.99	0.00	0.00	0.00	
11,900.00	90.00	89.51	6,450.00	870.64	4,987.72	4,994.99	0.00	0.00	0.00	
12,000.00	90.00	89.51	6,450.00	871.49	5,087.72	5,094.99	0.00	0.00	0.00	
12,100.00	90.00	89.51	6,450.00	872.34	5,187.72	5,194.99	0.00	0.00	0.00	
12,200.00	90.00	89.51	6,450.00	873.20	5,287.71	5,294.99	0.00	0.00	0.00	
12,300.00	90.00	89.51	6,450.00	874.05	5,387.71	5,394.99	0.00	0.00	0.00	
12,400.00	90.00	89.51	6,450.00	874.90	5,487.71	5,494.99	0.00	0.00	0.00	
12,500.00	90.00	89.51	6,450.00	875.75	5,587.70	5,594.99	0.00	0.00	0.00	
12,600.00	90.00	89.51	6,450.00	876.61	5,687.70	5,694.99	0.00	0.00	0.00	
12,700.00	90.00	89.51	6,450.00	877.46	5,787.70	5,794.99	0.00	0.00	0.00	
12,800.00	90.00	89.51	6,450.00	878.31	5,887.69	5,894.99	0.00	0.00	0.00	
12,900.00	90.00	89.51	6,450.00	879.16	5,987.69	5,994.99	0.00	0.00	0.00	
13,000.00	90.00	89.51	6,450.00	880.02	6,087.68	6,094.99	0.00	0.00	0.00	
13,100.00	90.00	89.51	6,450.00	880.87	6,187.68	6,194.99	0.00	0.00	0.00	
13,200.00	90.00	89.51	6,450.00	881.72	6,287.68	6,294.99	0.00	0.00	0.00	
13,300.00	90.00	89.51	6,450.00	882.57	6,387.67	6,394.99	0.00	0.00	0.00	
13,400.00	90.00	89.51	6,450.00	883.43	6,487.67	6,494.99	0.00	0.00	0.00	
13,500.00	90.00	89.51	6,450.00	884.28	6,587.67	6,594.99	0.00	0.00	0.00	
13,600.00	90.00	89.51	6,450.00	885.13	6,687.66	6,694.99	0.00	0.00	0.00	
13,700.00	90.00	89.51	6,450.00	885.98	6,787.66	6,794.99	0.00	0.00	0.00	
13,800.00	90.00	89.51	6,450.00	886.84	6,887.66	6,894.99	0.00	0.00	0.00	
13,900.00	90.00	89.51	6,450.00	887.69	6,987.65	6,994.99	0.00	0.00	0.00	
14,000.00	90.00	89.51	6,450.00	888.54	7,087.65	7,094.99	0.00	0.00	0.00	
14,100.00	90.00	89.51	6,450.00	889.39	7,187.64	7,194.99	0.00	0.00	0.00	
14,200.00	90.00	89.51	6,450.00	890.25	7,287.64	7,294.99	0.00	0.00	0.00	
14,300.00	90.00	89.51	6,450.00	891.10	7,387.64	7,394.99	0.00	0.00	0.00	
14,400.00	90.00	89.51	6,450.00	891.95	7,487.63	7,494.99	0.00	0.00	0.00	
14,500.00	90.00	89.51	6,450.00	892.81	7,587.63	7,594.99	0.00	0.00	0.00	
14,600.00	90.00	89.51	6,450.00	893.66	7,687.63	7,694.99	0.00	0.00	0.00	
14,700.00	90.00	89.51	6,450.00	894.51	7,787.62	7,794.99	0.00	0.00	0.00	
14,800.00	90.00	89.51	6,450.00	895.36	7,887.62	7,894.99	0.00	0.00	0.00	
14,900.00	90.00	89.51	6,450.00	896.22	7,987.62	7,994.99	0.00	0.00	0.00	
15,000.00	90.00	89.51	6,450.00	897.07	8,087.61	8,094.99	0.00	0.00	0.00	
15,100.00	90.00	89.51	6,450.00	897.92	8,187.61	8,194.99	0.00	0.00	0.00	

Hewlett-Packard

Planning Report

Database:	EDM 5000.14 Single User Db	Local Co-ordinate Reference:	Well TIMBRO 9-59 8B-9-2
Company:	VERDAD RESOURCES	TVD Reference:	RKB = 24' @ 5069.00usft (RIG)
Project:	WATTENBERG FIELD	MD Reference:	RKB = 24' @ 5069.00usft (RIG)
Site:	9N-59W-08 TIMBRO 9-59-8B PAD	North Reference:	True
Well:	TIMBRO 9-59 8B-9-2	Survey Calculation Method:	Minimum Curvature
Wellbore:	Wellbore #1		
Design:	Design #2		

Planned Survey										
Measured Depth (usft)	Inclination (°)	Azimuth (°)	Vertical Depth (usft)	+N/-S (usft)	+E/-W (usft)	Vertical Section (usft)	Dogleg Rate (°/100usft)	Build Rate (°/100usft)	Turn Rate (°/100usft)	
15,200.00	90.00	89.51	6,450.00	898.77	8,287.60	8,294.99	0.00	0.00	0.00	
15,300.00	90.00	89.51	6,450.00	899.63	8,387.60	8,394.99	0.00	0.00	0.00	
15,400.00	90.00	89.51	6,450.00	900.48	8,487.60	8,494.99	0.00	0.00	0.00	
15,500.00	90.00	89.51	6,450.00	901.33	8,587.59	8,594.99	0.00	0.00	0.00	
15,600.00	90.00	89.51	6,450.00	902.18	8,687.59	8,694.99	0.00	0.00	0.00	
15,700.00	90.00	89.51	6,450.00	903.04	8,787.59	8,794.99	0.00	0.00	0.00	
15,800.00	90.00	89.51	6,450.00	903.89	8,887.58	8,894.99	0.00	0.00	0.00	
15,900.00	90.00	89.51	6,450.00	904.74	8,987.58	8,994.99	0.00	0.00	0.00	
16,000.00	90.00	89.51	6,450.00	905.59	9,087.58	9,094.99	0.00	0.00	0.00	
16,100.00	90.00	89.51	6,450.00	906.45	9,187.57	9,194.99	0.00	0.00	0.00	
16,200.00	90.00	89.51	6,450.00	907.30	9,287.57	9,294.99	0.00	0.00	0.00	
16,300.00	90.00	89.51	6,450.00	908.15	9,387.56	9,394.99	0.00	0.00	0.00	
16,400.00	90.00	89.51	6,450.00	909.00	9,487.56	9,494.99	0.00	0.00	0.00	
16,492.15	90.00	89.51	6,450.00	909.79	9,579.71	9,587.14	0.00	0.00	0.00	
TD Well @ 16492.15ft										

Casing Points					
Measured Depth (usft)	Vertical Depth (usft)	Name		Casing Diameter (")	Hole Diameter (")
1,717.97	1,700.00	9 5/8"		9-5/8	13-1/2

Plan Annotations					
Measured Depth (usft)	Vertical Depth (usft)	Local Coordinates		Comment	
		+N/-S (usft)	+E/-W (usft)		
300.00	300.00	0.00	0.00	Begin Nudge @ 300.00ft	
826.50	823.54	36.24	-31.84	Hold Tangent @ 826.50ft	
5,831.54	5,744.29	723.41	-635.53	KOP @ 5831.54ft :: DLS = 9°/100'	
6,907.76	6,450.00	828.07	-4.33	End Build @ 6907.76ft	
16,492.15	6,450.00	909.79	9,579.71	TD Well @ 16492.15ft	