

HALLIBURTON

iCem[®] Service

VERDAD OIL & GAS CORP

United States of America, COLORADO

For: Andy Boshard

Date: Thursday, July 06, 2017

Homestead 15

WELD, Homestead 15

Homestead 15

Job Date: Thursday, July 06, 2017

Sincerely,

Bryan Kraft

Legal Notice

Disclaimer:

All information in this report is provided subject to the terms and conditions which govern the services provided by Halliburton. Halliburton personnel use their best efforts in gathering information and their best judgment in interpreting it, but any interpretation, research, analysis or recommendation furnished by Halliburton are opinions based upon inferences from measurements and empirical relationships and assumptions, which inferences and empirical relationships and assumptions are not infallible, and with respect to which professionals in the industry may differ. Accordingly, HALLIBURTON IS UNABLE TO GUARANTEE THE ACCURACY OF ANY CHART INTERPRETATION, RESEARCH ANALYSIS, OR JOB RECOMMENDATION and any interpretation or recommendation is not for use of or reliance upon by any third party. The customer has full responsibility for any of its decisions which are based on the information provided in this report.

Table of Contents

Real-Time Job Summary
 Job Event Log
Attachments.....
 Homestead 15-Graph.png
 Homestead 15-Events.png.....

1.0 Real-Time Job Summary

1.1 Job Event Log

Type	Seq. No.	Activity	Graph Label	Date	Time	Source	DH Density (ppg)	Comb Pump Rate (bbl/min)	DS Pump Press (psi)	Pump Stg Tot (bbl)	Comments
Event	1	Call Out	Call Out	7/5/2017	23:30:00	USER					CREW CALLED OUT AT 23:30 7/5/2017, REQUESTED ON LOCATION 5:00 7/6/2017. CREW PICKED UP CEMENT, CHEMICALS (28 GAL MUSOL A, 28 GAL DUAL SPACER B, 10 GAL D-AIR, 10 GAL MCCR), 100 LBS OF SUGAR, AND PLUG CONTAINER FROM FORT LUPTON, CO. BULK 660: 10897917/11764054, BULK 660: 11764737/11566182, PUMP ELITE: 11644701/11645460.
Event	2	Pre-Convoy Safety Meeting	Pre-Convoy Safety Meeting	7/6/2017	03:20:00	USER					DISCUSSED ROUTES, HAZARDS, AND COMMUNICATION WITH CREW.
Event	3	Crew Leave Yard	Crew Leave Yard	7/6/2017	03:30:00	USER					STARTED JOURNEY MANAGEMENT.
Event	4	Arrive at Location from Service Center	Arrive at Location	7/6/2017	04:00:00	USER					END JOURNEY MANAGEMENT. MEET WITH CO. MAN TO DISCUSS JOB; SURFACE CASING: 36# 9.625" @ 1733', CASING: 20# 5.5" HCP-110 @ 14687.65', 135.51' SHOE JOINT, 8.5" OPEN HOLE, TVD @ 8009', 9.9 PPG WELL FLUID, FRESH WATER DISPLACEMENT.

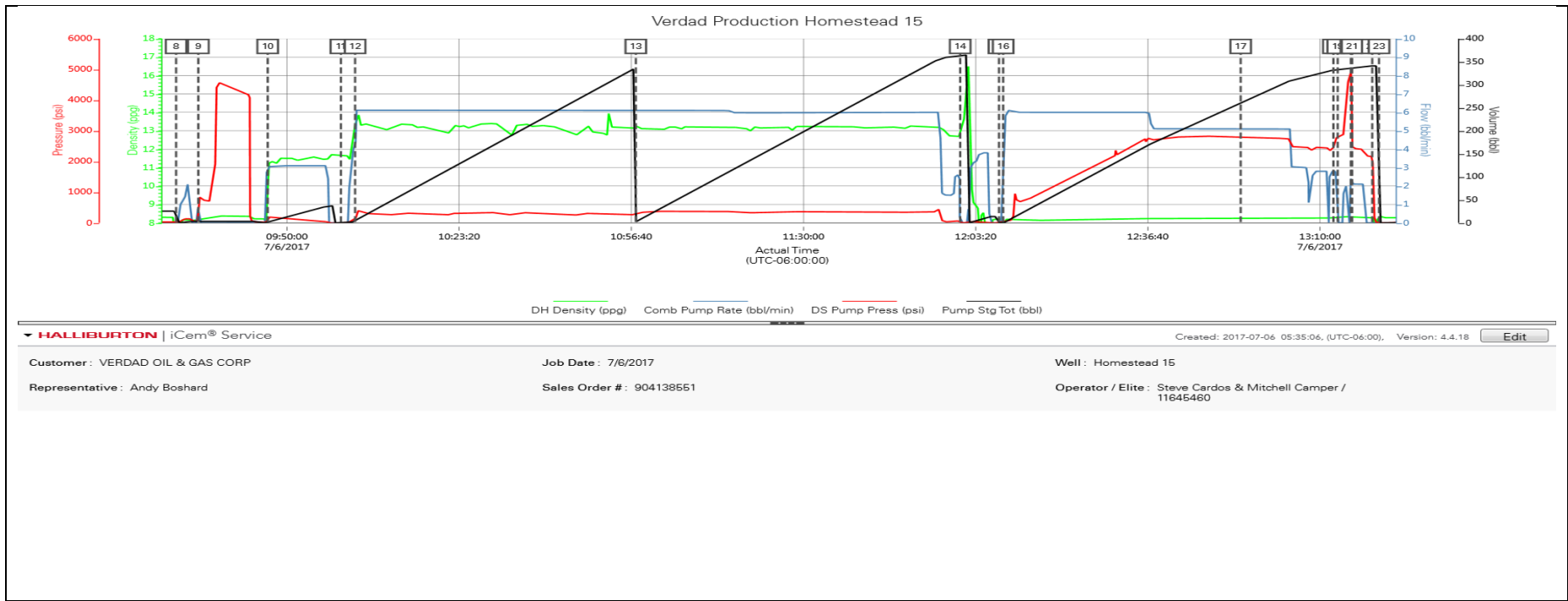
											CASING LANDED @ 5:30 7/6/2017.
Event	5	Pre-Rig Up Safety Meeting	Pre-Rig Up Safety Meeting	7/6/2017	04:30:00	USER					HAZARD HUNT. DISCUSSED POSSIBLE HAZARDS ASSOCIATED WITH LOCATION, RIG UP AND WEATHER.
Event	6	Rig-Up Equipment	Rig-Up Equipment	7/6/2017	04:45:00	USER					CREW STAGED EQUIPMENT AND RIGGED UP BULK, IRON, AND WATER HOSES TO PERFORM JOB.
Event	7	Safety Meeting - Pre Job	Safety Meeting - Pre Job	7/6/2017	08:30:00	USER					MEETING WITH HALLIBURTON AND RIG PERSONNEL. COMMUNICATED POTENTIAL SAFETY HAZARDS AND JOB DETAILS.
Event	8	Start Job	Start Job	7/6/2017	09:28:32	COM5					BEGIN RECORDING JOB DATA.
Event	9	Test Lines	Test Lines	7/6/2017	09:32:50	COM5	8.16	0.00	909.00	3.30	PRESSURE TESTED IRON TO 4500 PSI. KICKOUTS SET @ 500 PSI, KICKED OUT @ 890 PSI, 5TH GEAR STALL OUT @ 1800 PSI.
Event	10	Pump Spacer 1	Pump Tuned Spacer @ 11.5 ppg	7/6/2017	09:46:16	COM5	9.41	3.00	212.00	1.10	PUMP 40 BBLS OF TUNED SPACER @ 11.5 LB/GAL, ADDED 28 GAL MUSOL A, 28 GAL DUAL SPACER B, 10 GAL D-AIR, DENSITY VERIFIED BY PRESSURIZED MUD SCALES.
Event	11	Drop Bottom Plug	Drop Bottom Plug	7/6/2017	10:00:26	COM5	11.67	0.00	-2.00	0.00	PLUG LEFT CONTAINER, VERIFIED BY COMPANY MAN.

Event	12	Pump Lead Cement	Pump Lead Cement @ 13.2 ppg	7/6/2017	10:03:11	COM5	13.32	4.10	107.00	3.90	PUMP 1145 SKS OF ELASTICEM @ 13.2 LB/GAL, 1.57 YIELD, 7.55 GAL/SK, 320 BBLS, CALCULATED TOL @ SURFACE', DENSITY VERIFIED BY PRESSURIZED MUD SCALES.
Event	13	Pump Tail Cement	Pump Tail Cement @ 13.2 ppg	7/6/2017	10:57:32	COM5	13.28	6.10	269.00	2.50	PUMP 960 SKS OF NEOCEM @ 13.2 LB/GAL, 2.04 YIELD, 9.75 GAL/SK, 349 BBLS, CALCULATED TOT @ 6208', DENSITY VERIFIED BY PRESSURIZED MUD SCALES.
Event	14	Shutdown	Shutdown	7/6/2017	12:00:20	COM5	13.12	0.00	28.00	349.40	SHUTDOWN TO WASH PUMPS/LINES AND DROP TOP PLUG.
Event	15	Drop Top Plug	Drop Top Plug	7/6/2017	12:07:50	COM5	8.20	0.00	2.00	0.00	PLUG LEFT CONTAINER, VERIFIED BY COMPANY MAN.
Event	16	Pump Displacement	Pump Fresh Water Displacement	7/6/2017	12:08:39	COM5	6.81	2.90	30.00	0.30	BEGIN CALCULATED DISPLACEMENT OF 322 BBLS WITH FRESH WATER.
Event	17	Cement Returns to Surface	Cement Returns to Surface	7/6/2017	12:54:38	USER	8.25	5.10	2817.00	260.20	CEMENT RETURNS TO SURFACE @ 260 BBLS INTO DISPLACEMENT. TOTAL OF 69 BBLS OF CEMENT TO SURFACE WITH THE 5 BBL WET SHOE.
Event	18	Bump Plug	Bump Plug	7/6/2017	13:12:35	COM5	8.27	2.80	2443.00	322.90	PLUG BUMPED @ CALCULATED DISPLACEMENT. PRESSURED 500 PSI OVER FINAL CIRCULATING PRESSURE OF 2450 PSI.
Event	19	Shutdown	Shutdown	7/6/2017	13:13:25	USER	8.28	0.00	2830.00	322.20	SHUTDOWN FOR 1 MINUTE.

Event	20	Pressure Up	Shear Pins	7/6/2017	13:15:58	USER	8.37	2.20	4889.00	326.30	PRESSURE UP WELL TO SHEAR PINS. PINS SHEARED @ 4940 PSI.
Event	21	Pump Displacement	Pump Wet Shoe	7/6/2017	13:16:13	USER	8.30	2.10	2543.00	327.90	PUMP 5 BBLS OF FRESH WATER FOR A WET SHOE.
Event	22	Check Floats	Check Floats	7/6/2017	13:20:06	USER	8.27	0.00	2169.00	332.80	RELEASED PRESSURE, FLOATS HELD, 1 BBL BACK.
Event	23	End Job	End Job	7/6/2017	13:21:25	COM5					STOP RECORDING JOB DATA.
Event	24	Pre-Rig Down Safety Meeting	Pre-Rig Down Safety Meeting	7/6/2017	13:30:00	USER					DISCUSSED POSSIBLE HAZARDS ASSOCIATED WITH WEATHER, LOCATION AND RIGGING DOWN IRON AND HOSES.
Event	25	Rig-Down Completed	Rig-Down Completed	7/6/2017	14:15:00	USER					ALL HALLIBURTON ITEMS WERE STOWED FOR TRAVEL, AND LOCATION WAS CLEAN.
Event	26	Pre-Convoy Safety Meeting	Pre-Convoy Safety Meeting	7/6/2017	14:25:00	USER					DISCUSSED ROUTES HAZARDS AND COMMUNICATION WITH CREW.
Event	27	Depart Location	Depart Location	7/6/2017	14:30:00	USER					THANK YOU FOR USING HALLIBURTON - BRYAN KRAFT AND CREW.

2.0 Attachments

2.1 Homestead 15-Graph.png



2.2 Homestead 15-Events.png

Description	Actual Time (UTC-06:00:00)	DH Density (ppg)	Comb Pump Rate (bbl/min)	DS Pump Press (psi)	Pump Stg Tot (bbl)	
8 Start Job	09:28:32	8.27	0.00	30.00	25.40	
9 Test Lines	09:32:50	8.16	0.00	909.00	3.30	
10 Pump Tuned Spacer @ 11.5 ppg	09:46:16	9.41	3.00	212.00	1.10	
11 Drop Bottom Plug	10:00:26	11.67	0.00	-2.00	0.00	
12 Pump Lead Cement @ 13.2 ppg	10:03:11	13.32	4.10	107.00	3.90	
13 Pump Tail Cement @ 13.2 ppg	10:57:32	13.28	6.10	269.00	2.50	
14 Shutdown	12:00:20	13.12	0.00	28.00	364.40	
15 Drop Top Plug	12:07:50	8.20	0.00	2.00	0.00	
16 Pump Fresh Water Displacement	12:08:39	6.81	2.90	30.00	0.30	
17 Cement Returns to Surface	12:54:38	8.25	5.10	2817.00	260.20	
18 Bump Plug	13:12:35	8.27	2.80	2443.00	331.90	
19 Shutdown	13:13:25	8.28	0.00	2830.00	333.20	
20 Shear Pins	13:15:58	8.37	2.20	4889.00	335.30	
21 Pump Wet Shoe	13:16:13	8.30	2.10	2543.00	335.90	
22 Check Floats	13:20:06	8.27	0.00	2169.00	340.80	
23 End Job	13:21:25	8.40	0.00	-0.30	0.00	

▼ HALLIBURTON | iCem® Service

Customer: VERDAD OIL & GAS CORP

Representative: Andy Boshard

Job Date: 7/6/2017

Sales Order #: 904138551

Well: Homestead 15

Operator / Elite: Steve Cardos & Mitchell Camper / 11645460

Created: 2017-07-06 05:35:06, (UTC-06:00), Version: 4.4.18

Edit