



00010568

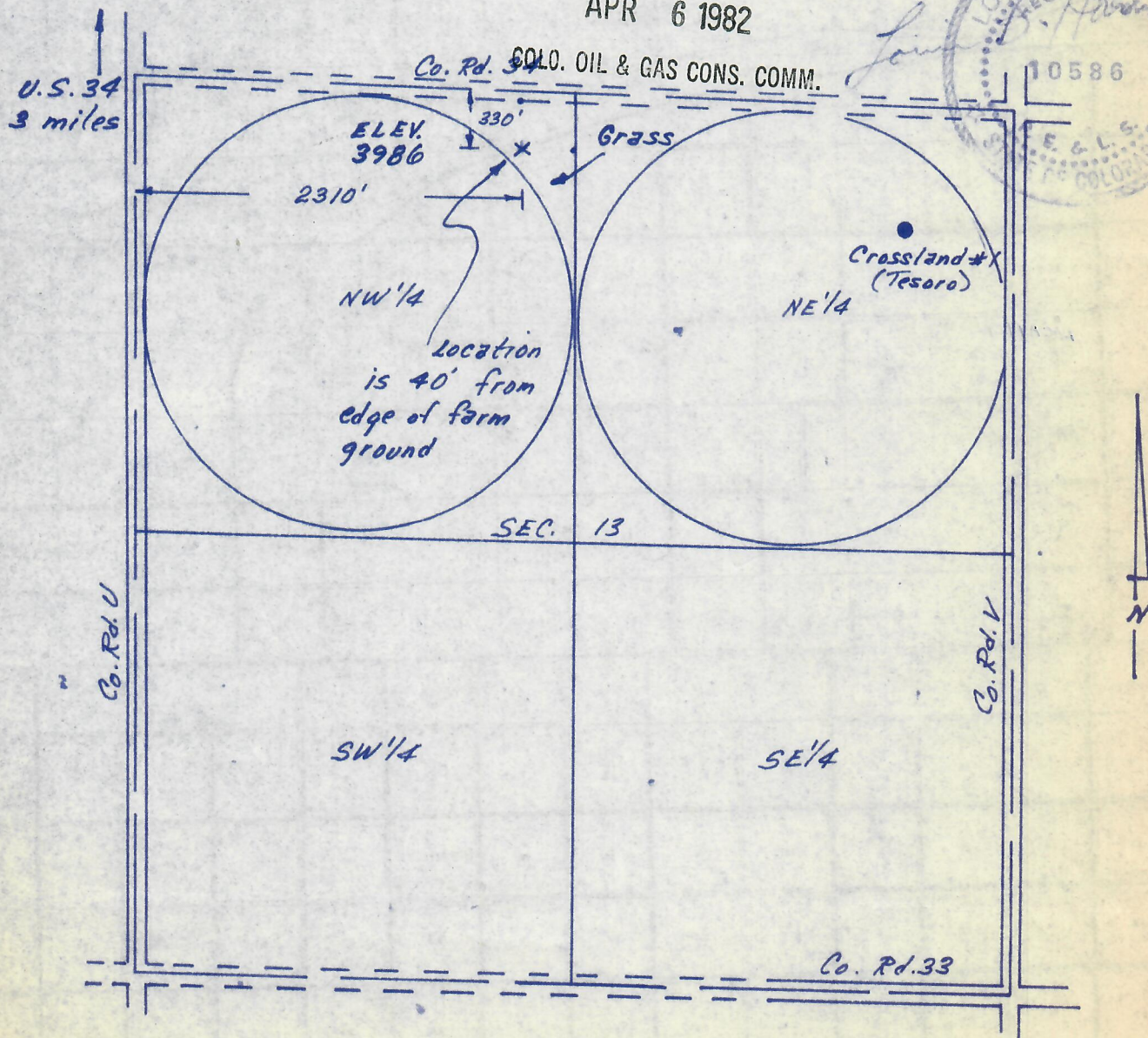
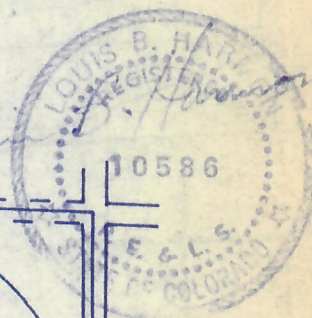
I hereby certify that the accompanying plat is an accurate representation of a correct survey showing the location of a proposed well. This location may be described as a point 330 feet South of the North line and 2310 feet East of the West line of Section 13, T1N, R46W of the 6th PM, Yuma County, Colorado.

The surface elevation at this point is 3986 feet above msl.

RECEIVED

APR 6 1982

COLO. OIL & GAS CONS. COMM.



X SURVEYED POINT

• REFERENCE POINT (300' North,
340' East)**HARMON
ENGINEERING
SERVICES**Brown #13-1
NE 1/4 NW 1/4, Section 13 T1N R46WJ. M. Huber 5 April 1982
Yuma County, Colorado

2011-12

