



00010567

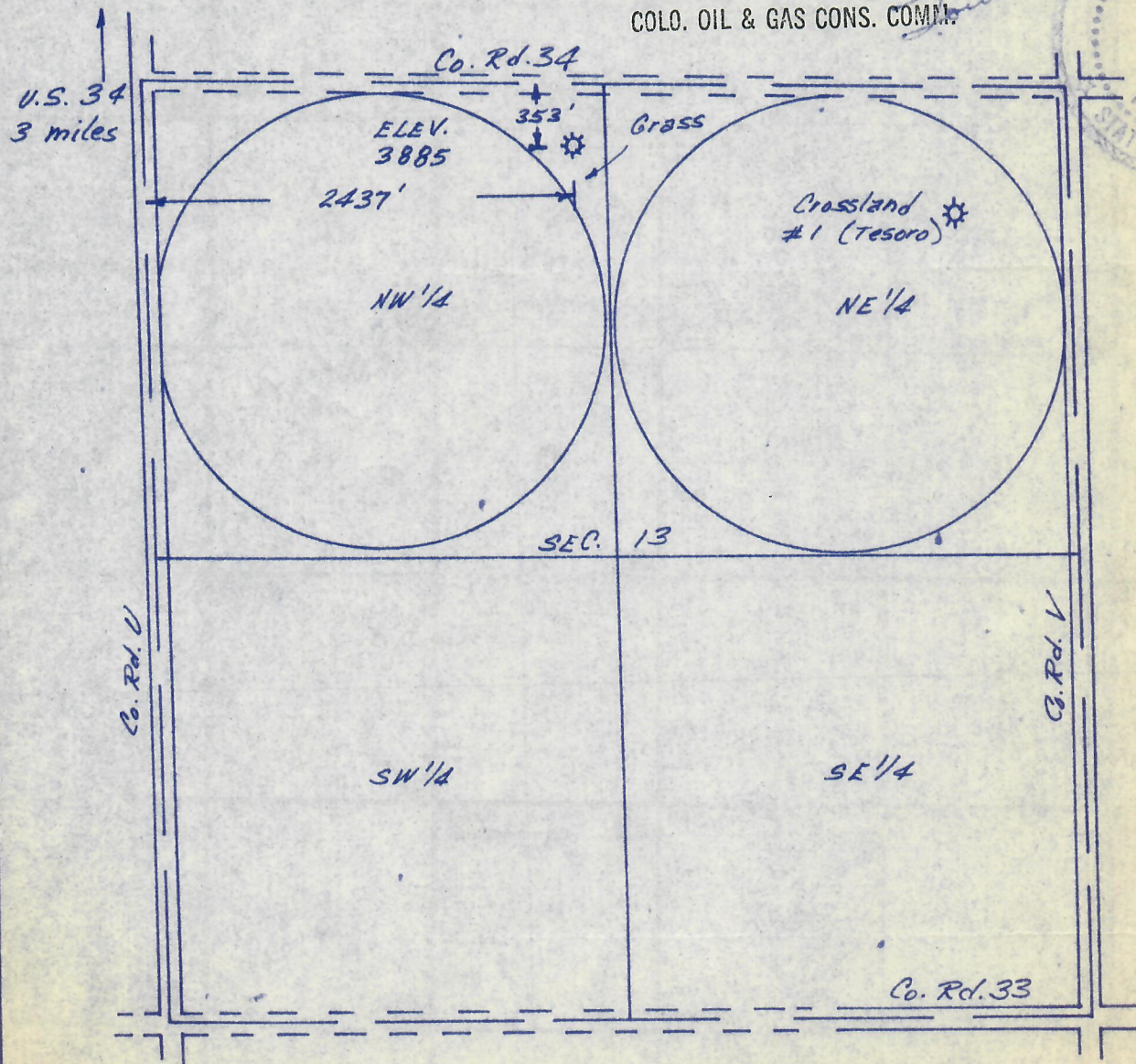
I hereby certify that the accompanying plat is an accurate representation of a correct survey showing the location of a proposed well. This location may be described as a point 353 feet South of the North line and 2437 feet East of the West line of Section 13, T1N, R46W of the 6th PM, Yuma County, Colorado.

The surface elevation at this point is 3885 feet above msl.

RECEIVED

MAY 24 1982

COLO. OIL & GAS CONS. COMM.



O AS BUILT LOCATION

HARMON
ENGINEERING
SERVICES

Brown #13-1
NE1/4 NW1/4, Section 13 T1N R46W

J.M. Huber 6 May 1982
Yuma County, Colorado
2011-20

