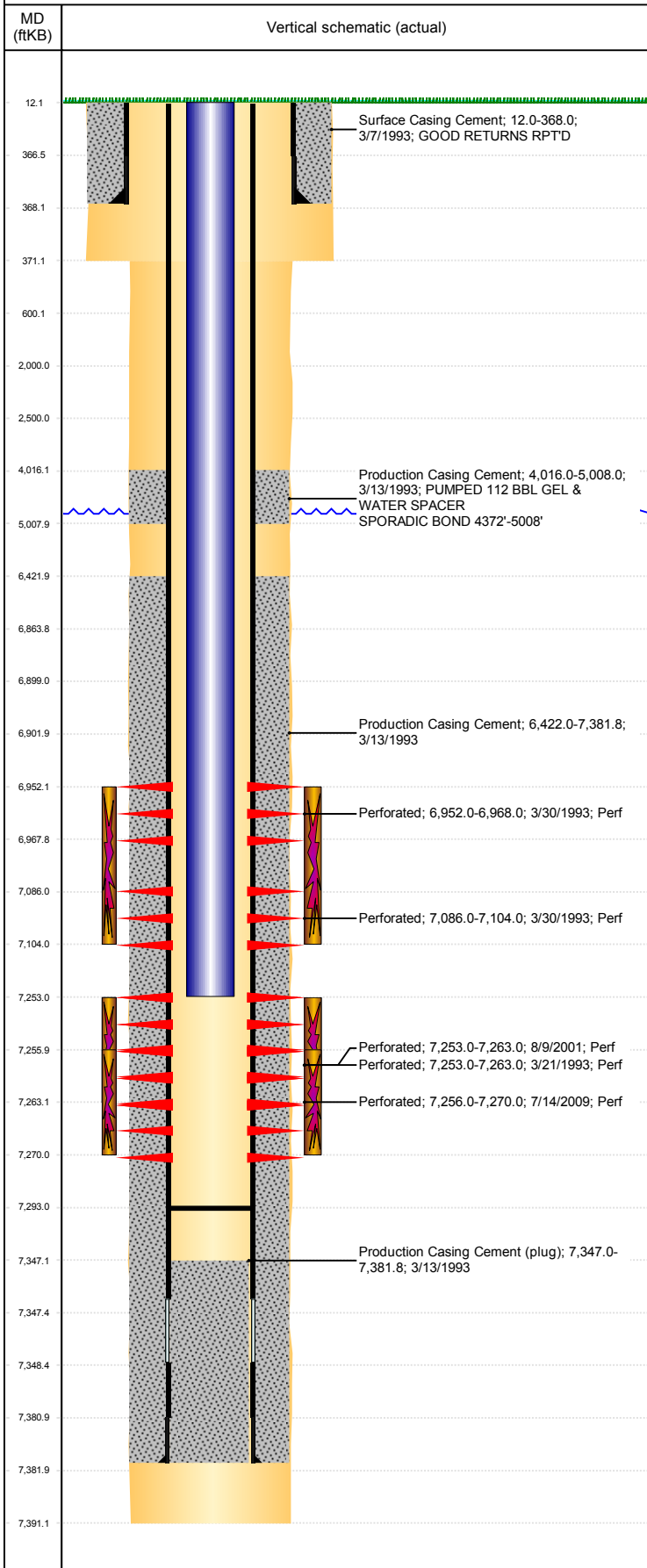


Well Name: RAISLEY 44-27

VERTICAL, ORIGINAL HOLE, 4/23/2019 8:03:34 AM



Well Header									
API 05-123-16824		Business Unit DJ BASIN			District 15		Well Config VERTICAL		
KB - GL / MSL (ft... 12.00		Spud Date 3/7/1993		P & A Date		Well Production Status SI			SoRT No
Comment PROD CSG DEPTH DISCREPANCY: ST COMP RPT & DRL RPT DEPTH 7319', CSG TALLY & CMT RPT @ 7381', PBDT RPT'D ON ALL 7347'. WELLHEAD IS 3000#									
Surface Location (Congressional)									
Qtr 3 SE	Qtr 4 SE	Section 27	Twnshp 5	Twnsh... N	Range 66	Rng E/... W	Actual Latitude (°) 40.36530000	Actual Longitude (°) -104.75899000	
Wellbore Sections									
Section Des			Size (in)			Act Top, MD (ftKB)		Act Btm, MD (ftKB)	
SURFACE			12 1/4			12		371	
PRODUCTION			7 7/8			371		7,391	
Casing Strings									
Csg Des			Run Date		OD (in)	Wt/Len (lb/ft)	Grade	Top, MD (ftKB)	MD (ftKB)
Surface			3/7/1993		8 5/8	24.00		12.0	368.0
Production			3/13/1993		4 1/2	11.60	M-75	12.0	7,381.8
Cement									
Des					Start Date		Top (ftKB)		Btm (ftKB)
Surface Casing Cement					3/7/1993		12.0		368.0
Production Casing Cement					3/13/1993		4,016.0		5,008.0
Production Casing Cement					3/13/1993		6,422.0		7,381.8
Zone Statuses									
Zone Name		Status Date		Status	Fluid Type	Job			Prod Method
NIOBRARA		12/25/2013		PR	Water				Flowing
NIOBRARA		10/7/2016		SI					
CODELL		12/25/2013		PR	Water				Flowing
CODELL		10/7/2016		SI					
Perforation Data									
Linked Zone			Bnch/Stg	Entered Shot Total	Top (ftKB)		Btm (ftKB)		Date
NIOBRARA, ORIGINAL HOLE				8	6,952.00		6,968.00		3/30/1993
NIOBRARA, ORIGINAL HOLE				9	7,086.00		7,104.00		3/30/1993
CODELL, ORIGINAL HOLE				20	7,253.00		7,263.00		3/21/1993
CODELL, ORIGINAL HOLE				20	7,253.00		7,263.00		8/9/2001
CODELL, ORIGINAL HOLE				28	7,256.00		7,270.00		7/14/2009
Stimulation Intervals									
Zone					Start Date		Top (ftKB)		Btm (ftKB)
NIOBRARA, ORIGINAL HOLE					4/2/1993		6,952.0		7,104.0
CODELL, ORIGINAL HOLE					3/23/1993		7,253.0		7,263.0
CODELL, ORIGINAL HOLE					8/13/2001		7,253.0		7,263.0
CODELL, ORIGINAL HOLE					7/22/2009		7,256.0		7,270.0
Other In Hole									
Run Date			Des			OD (in)	Top (ftKB)		Btm (ftKB)
Logs									
Date		Type				Top, MD (ftKB)		Btm, MD (ftKB)	
3/13/1993		COMPENSATED DENSITY				4,000.0		7,370.0	
3/13/1993		INDUCTION				368.0		7,390.0	
3/19/1993		CBL/CCL/GR				3,924.0		7,316.0	
Plug Back Total Depths									
Date		Type			Com				Depth (ftKB)
4/18/1993		FILL			CLEAN OUT				7,340.0
8/15/2001		FILL			CLEAN OUT				7,293.0