



**2"=100ft**  
**Feet**

Oil Co:	HighPoint Resources
Well Name:	RSU AF 4-62-02-4841CS
Surf LSD:	WELD
State/Prov:	Colorado
Country:	USA
Job #:	CO

Oil Company:	HighPoint Resources
Well Name:	RSU AF 4-62-02-4841CS
Surface LSD:	WELD
State/Prov:	Colorado
Country:	USA
Job #:	CO
Drilling Co:	Highpoint Resources
Rig #:	Savannah 803
Co Rep 1:	
Co Rep 2:	
Geologist 1:	
Geologist 2:	
DD 1:	
DD 2:	
MWD 1:	Jack Simmons
MWD 2:	
MWD Kit:	
Well Licence:	
API/UWI:	
AFE #:	

[illegible]

GEOGUIDANCE Drilling Services Inc. uses its best efforts to provide its customers with accurate information and interpretations in conjunction with services performed but will not be held liable or responsible for the accuracy of such information or interpretation.

Printed: Aug 01, 2018 13:07

**Comments:**

Client: **HighPoint Resources**

Well Name: **RSU AF 4-62-02-4841CS**

API/UWI:

Well Lic:

Surface LSD: **WELD**

State/Prov: **Colorado**Country: **USA**

KB: 23.00

GL: 4545.30

DF: 4522.30

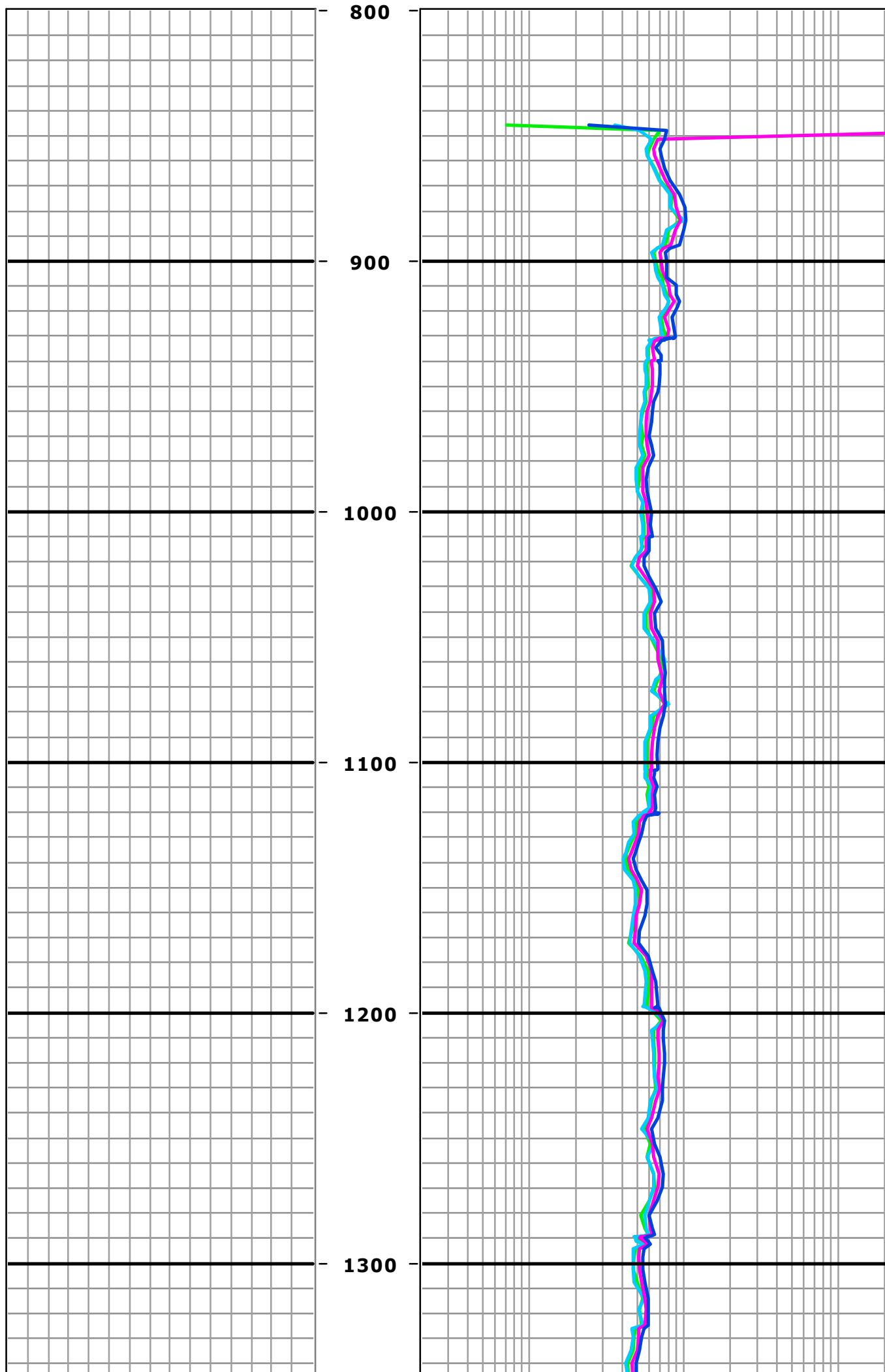


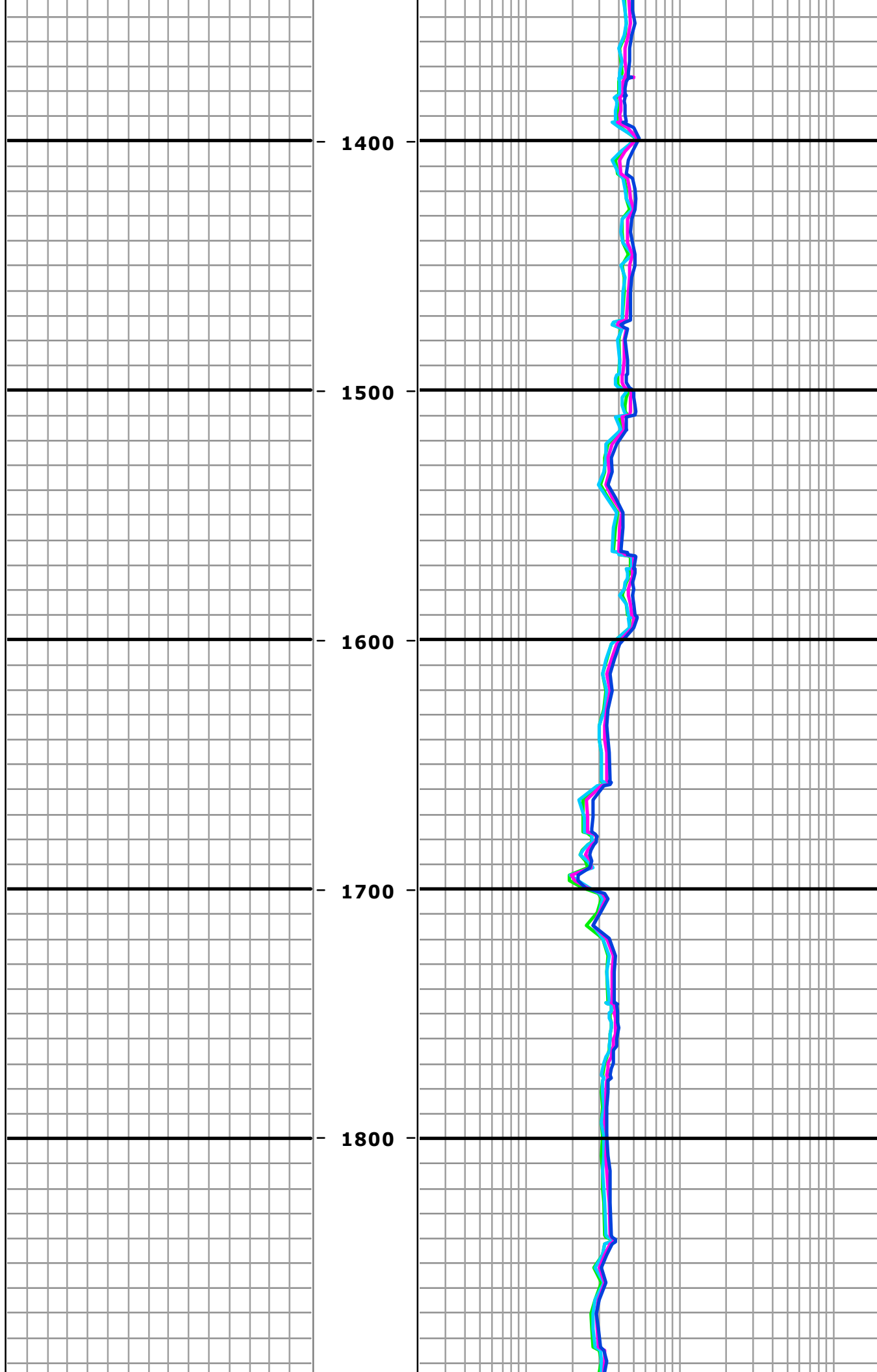
MD

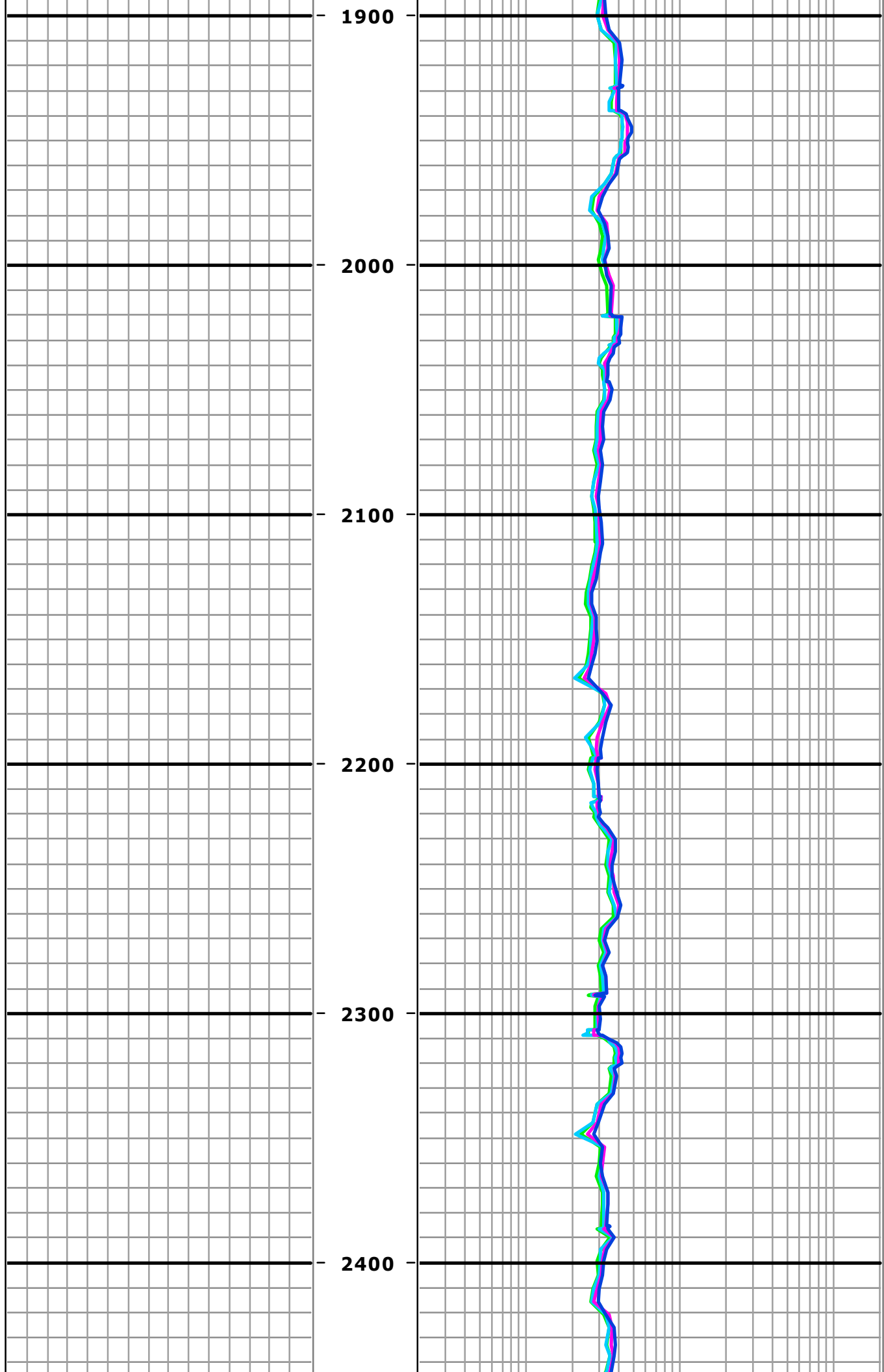
2":100'

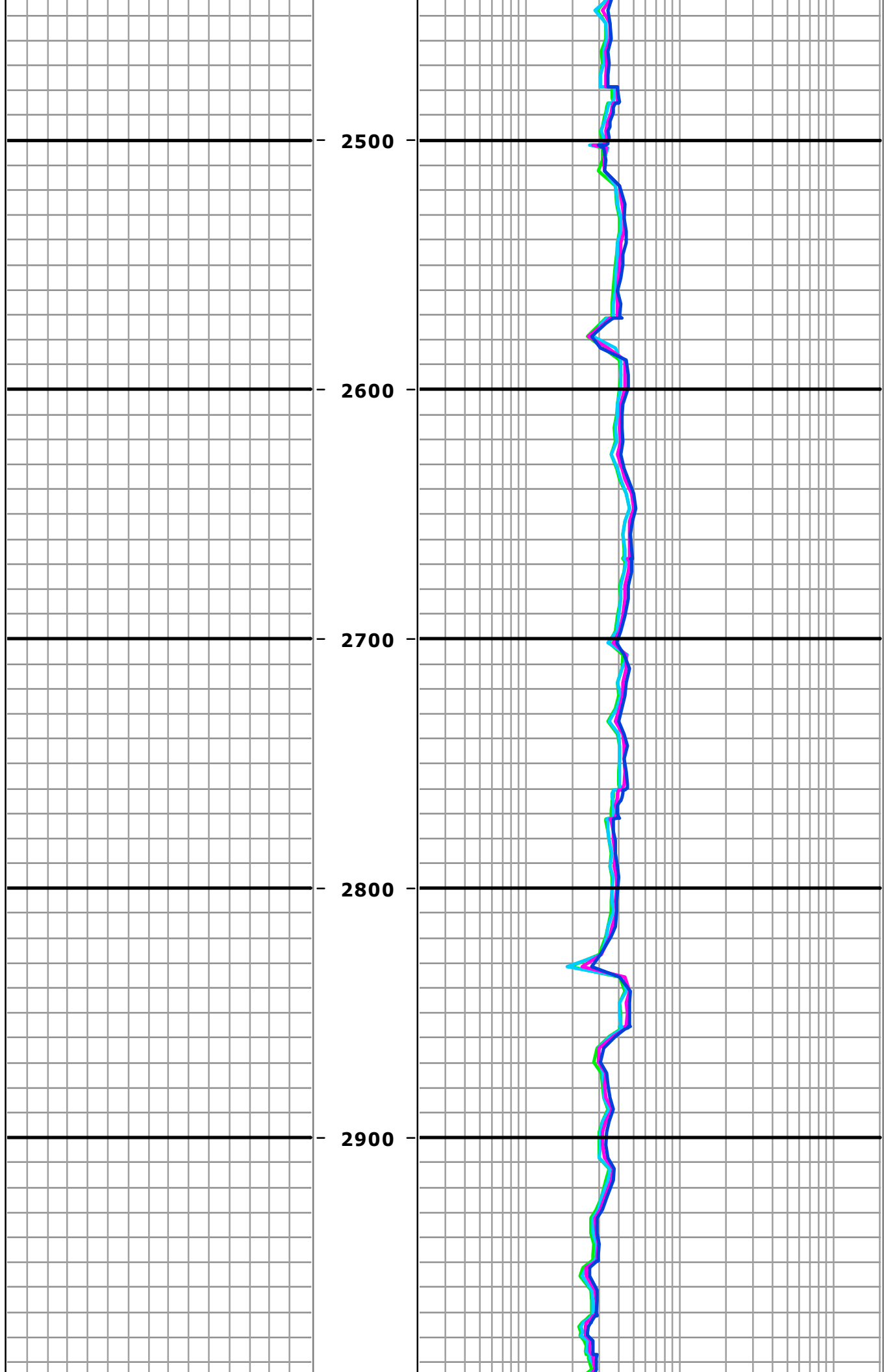
Feet

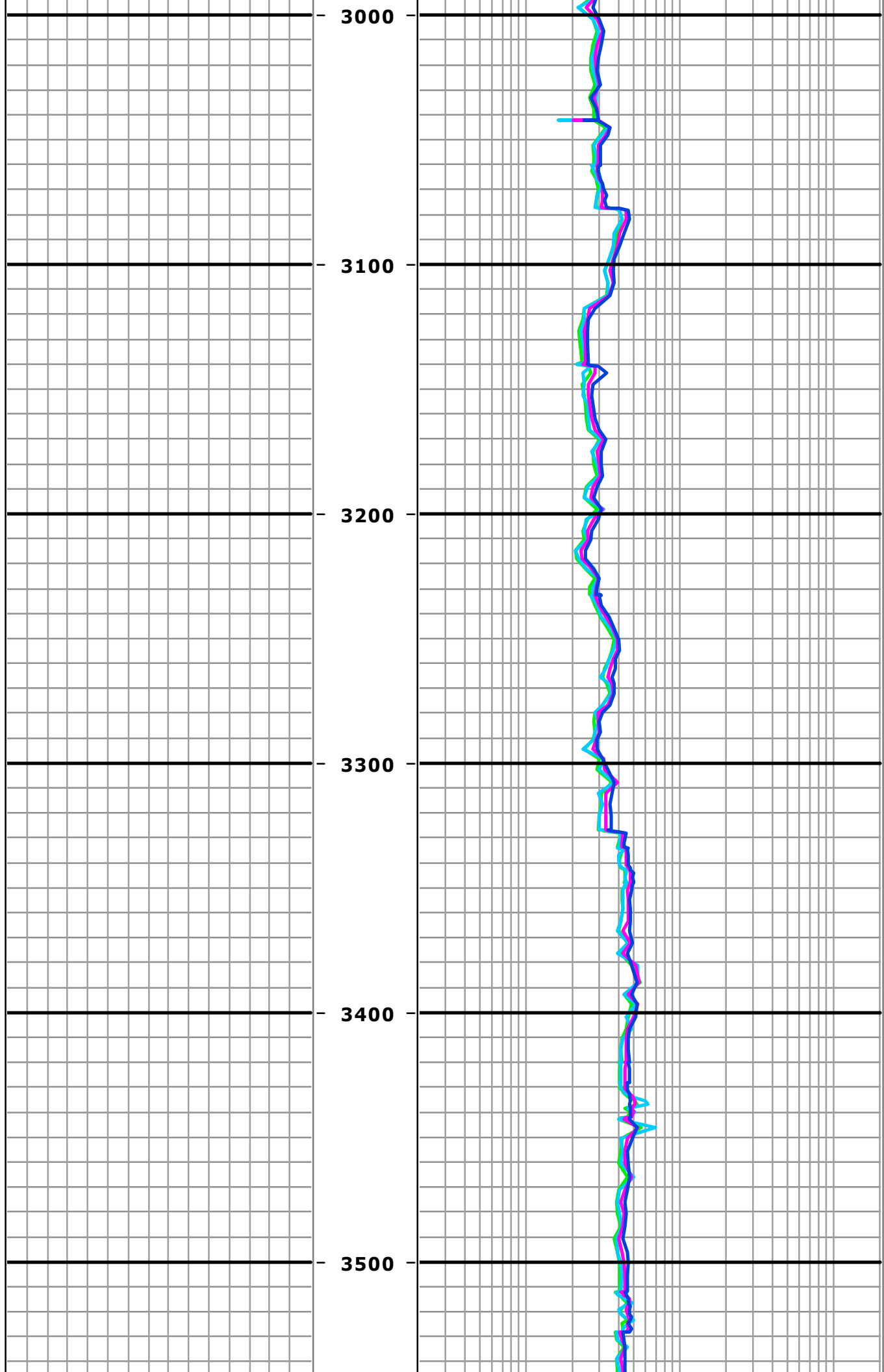
0.2	400Khz Att 34"	200
0.2	2Mhz Att 34"	200
0.2	2Mhz Phase 34"	200
0.2	400Khz Phase 34"	200

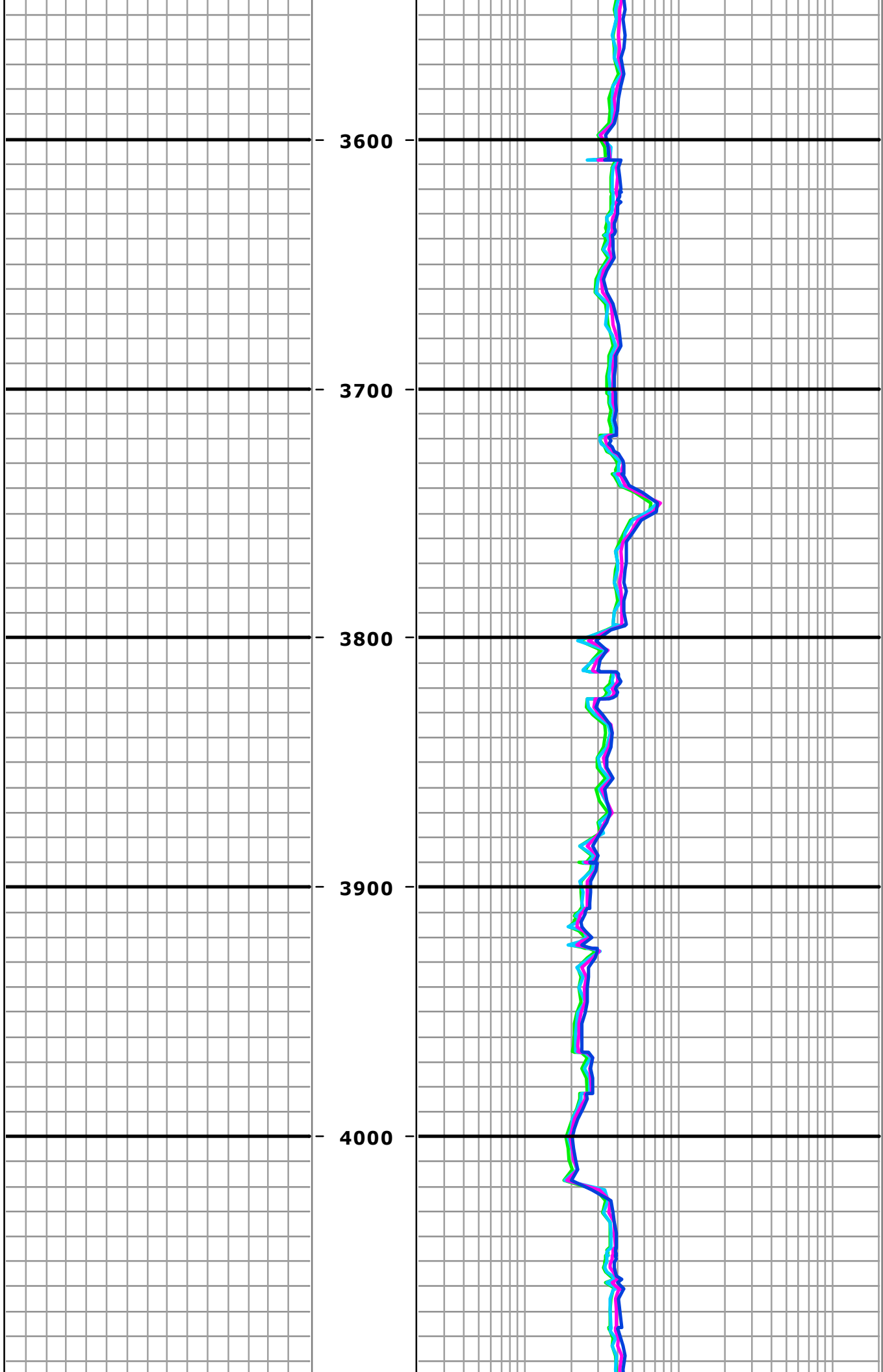


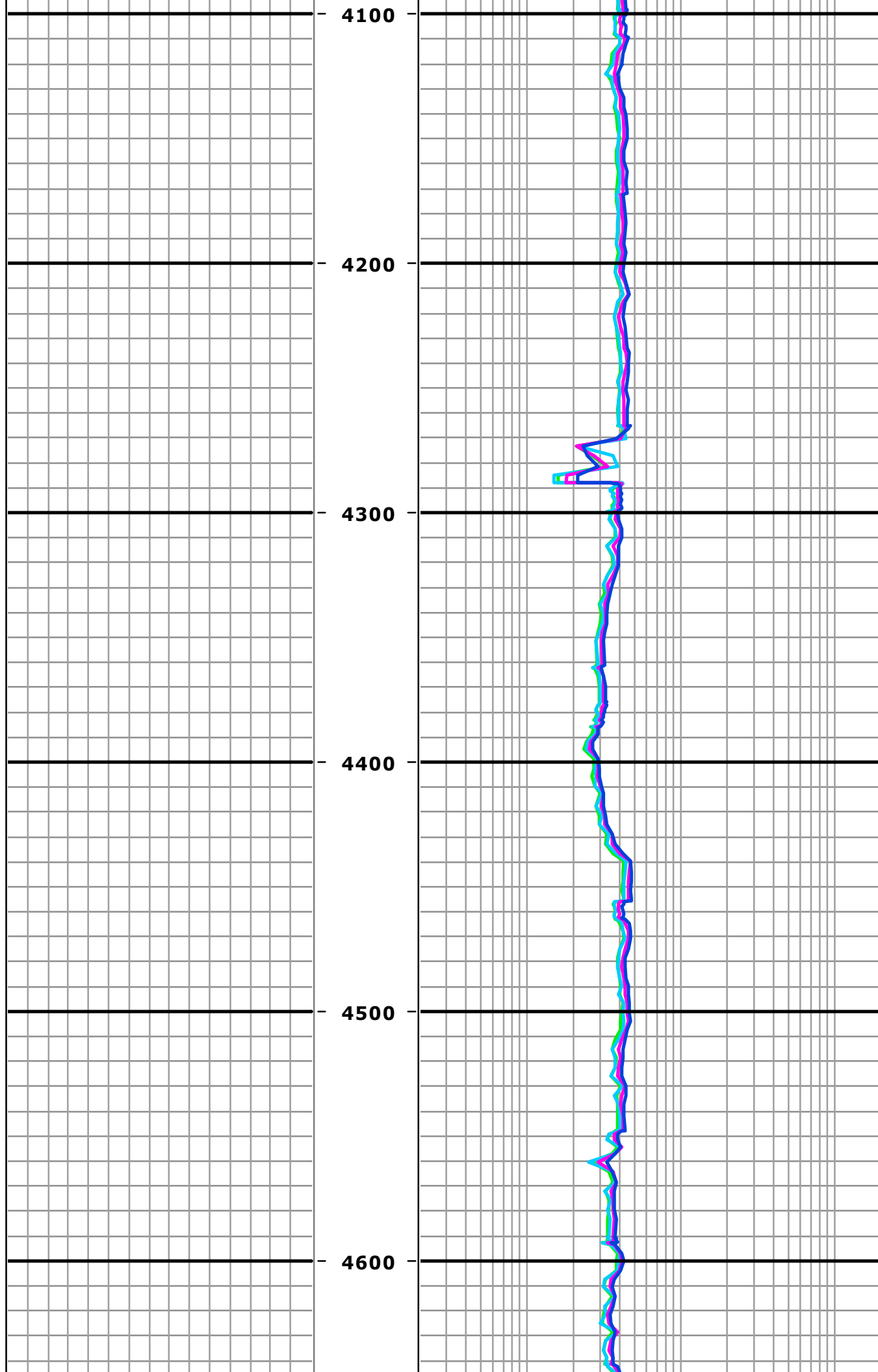




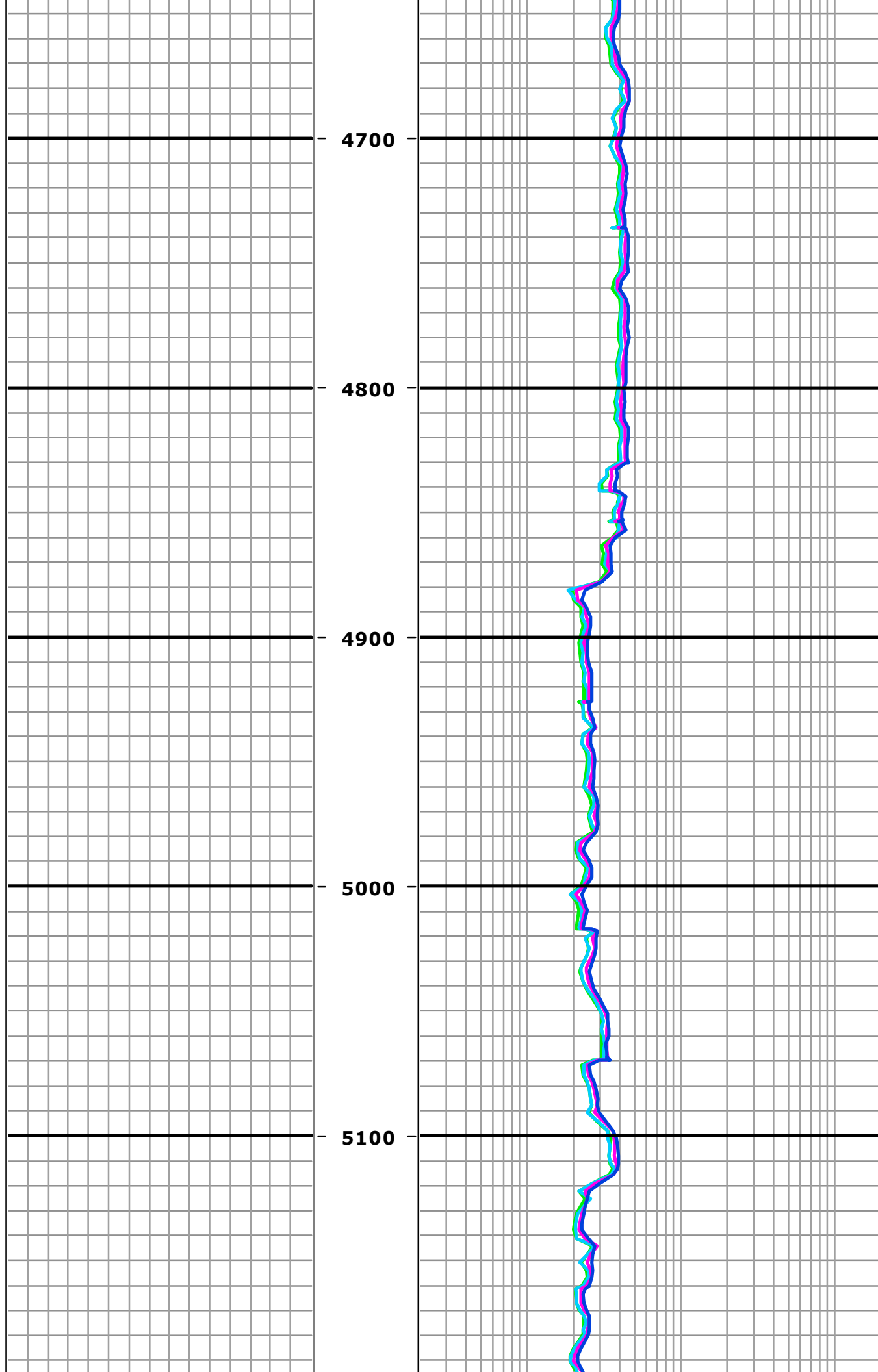




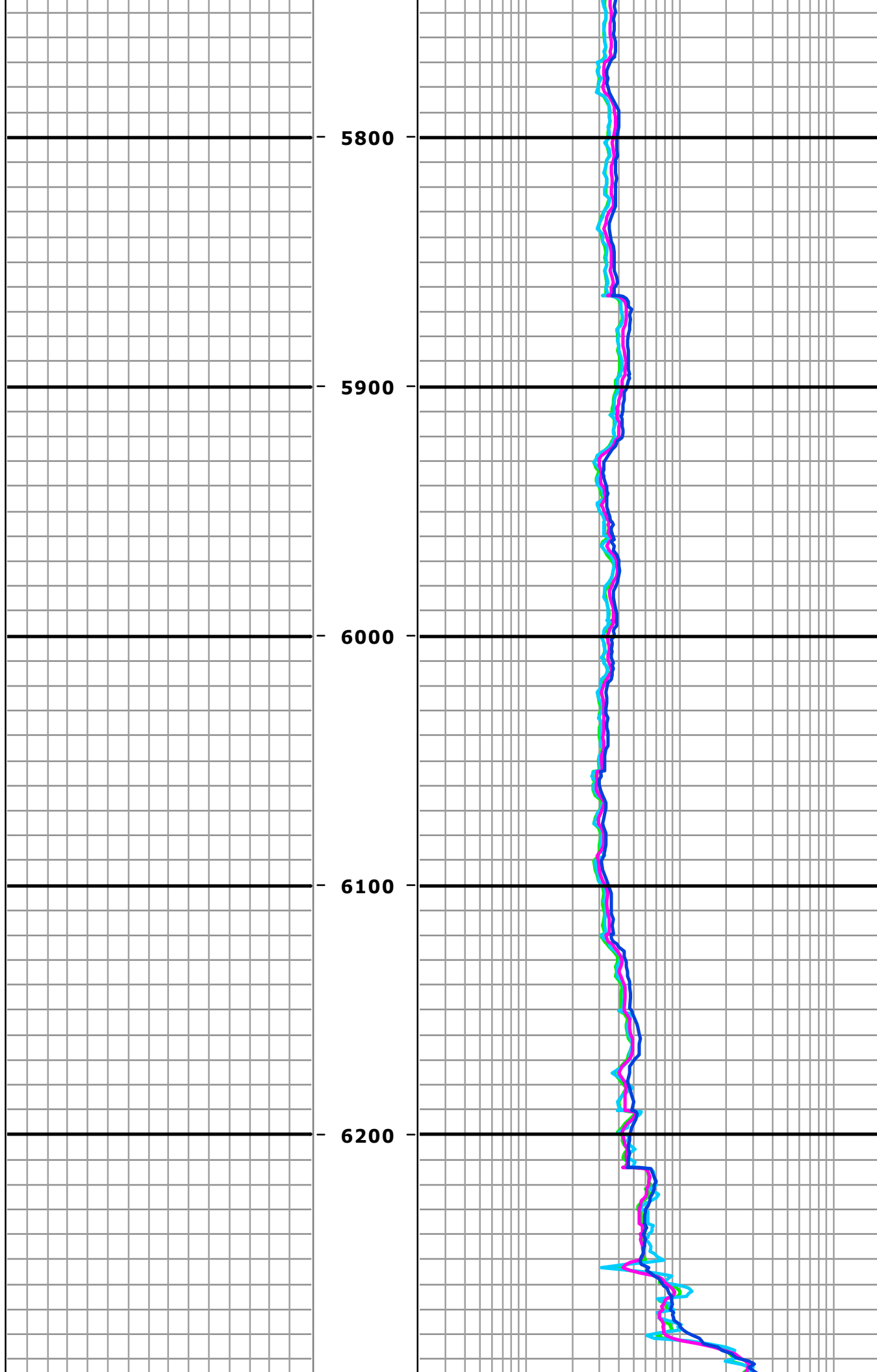


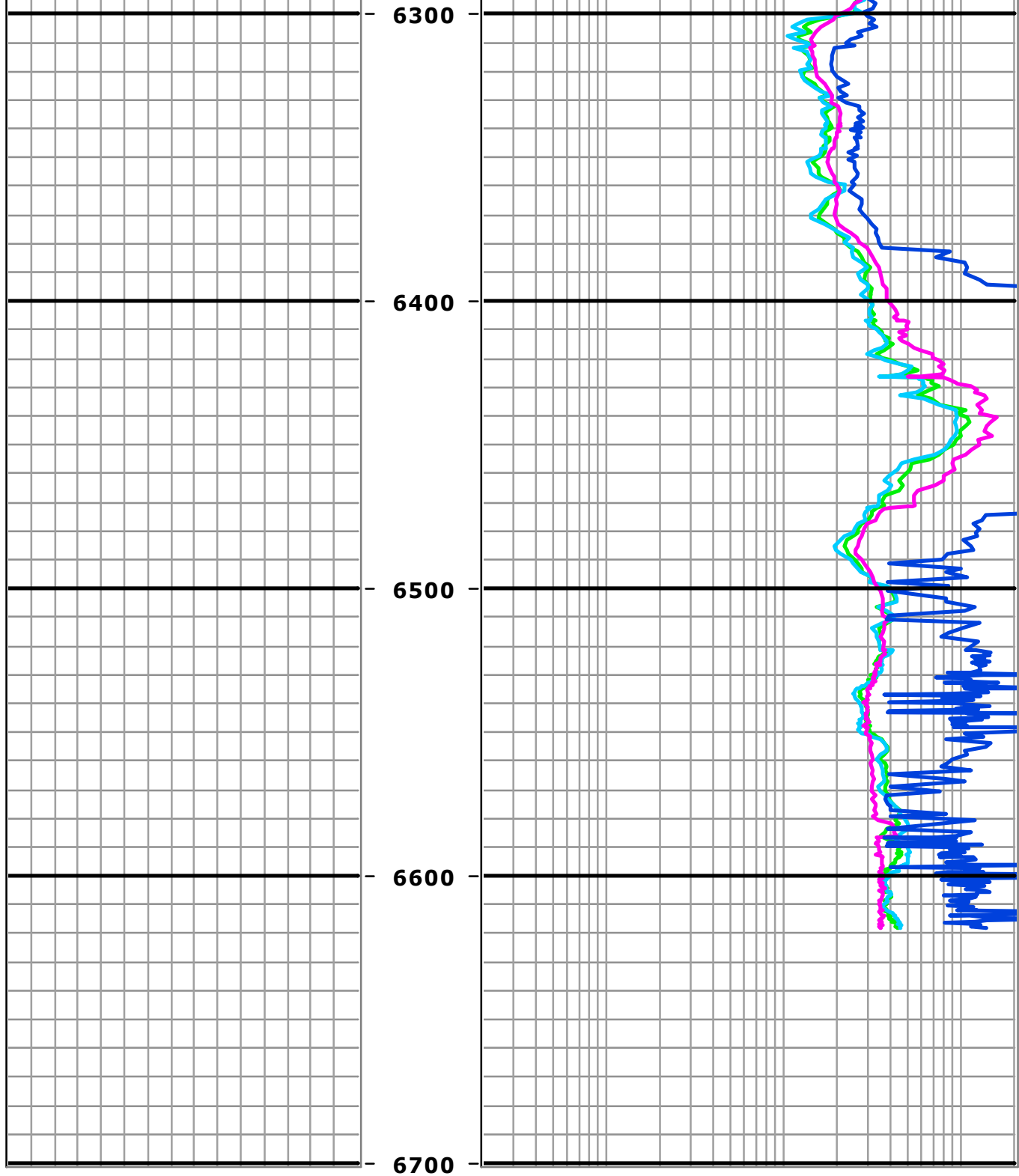












	<b>Feet</b>	<b>0.2</b>	400Khz Att 34"	<b>200</b>
	<b>2":100'</b>	<b>0.2</b>	2Mhz Att 34"	<b>200</b>
	<b>MD</b>	<b>0.2</b>	2Mhz Phase 34"	<b>200</b>
		<b>0.2</b>	400Khz Phase 34"	<b>200</b>



Client: **HighPoint Resources**

Well Name: **RSU AF 4-62-02-4841CS**

API/UWI: \_\_\_\_\_

Well Lic: \_\_\_\_\_

Surface LSD: **WELD** KB: **23.00**

State/Prov:	<b>Colorado</b>	Job #:	<b>CO</b>	GL:	<b>4545.30</b>
Country:	<b>USA</b>	MWD Kit:		DF:	<b>4522.30</b>