

# FRANE SURVEYING INC.

Physical Address: 34834 Annie Cir.  
Mail to: Box 2372, Elizabeth, CO 80107  
Ph. 303-243-0037  
www.franesurveying.com  
Job # 18-132-Millican #1-7

Frane Surveying of Elizabeth, Colorado, has in accordance with a request from **Waulco Resources LLC** has determined the location of **Millican #1-7** to be **1077 feet FNL**, and **211 feet FEL**, of SECTION 7, Township 32s, Range 47w of the 6th Principal Meridian, **Baca**, Colorado.

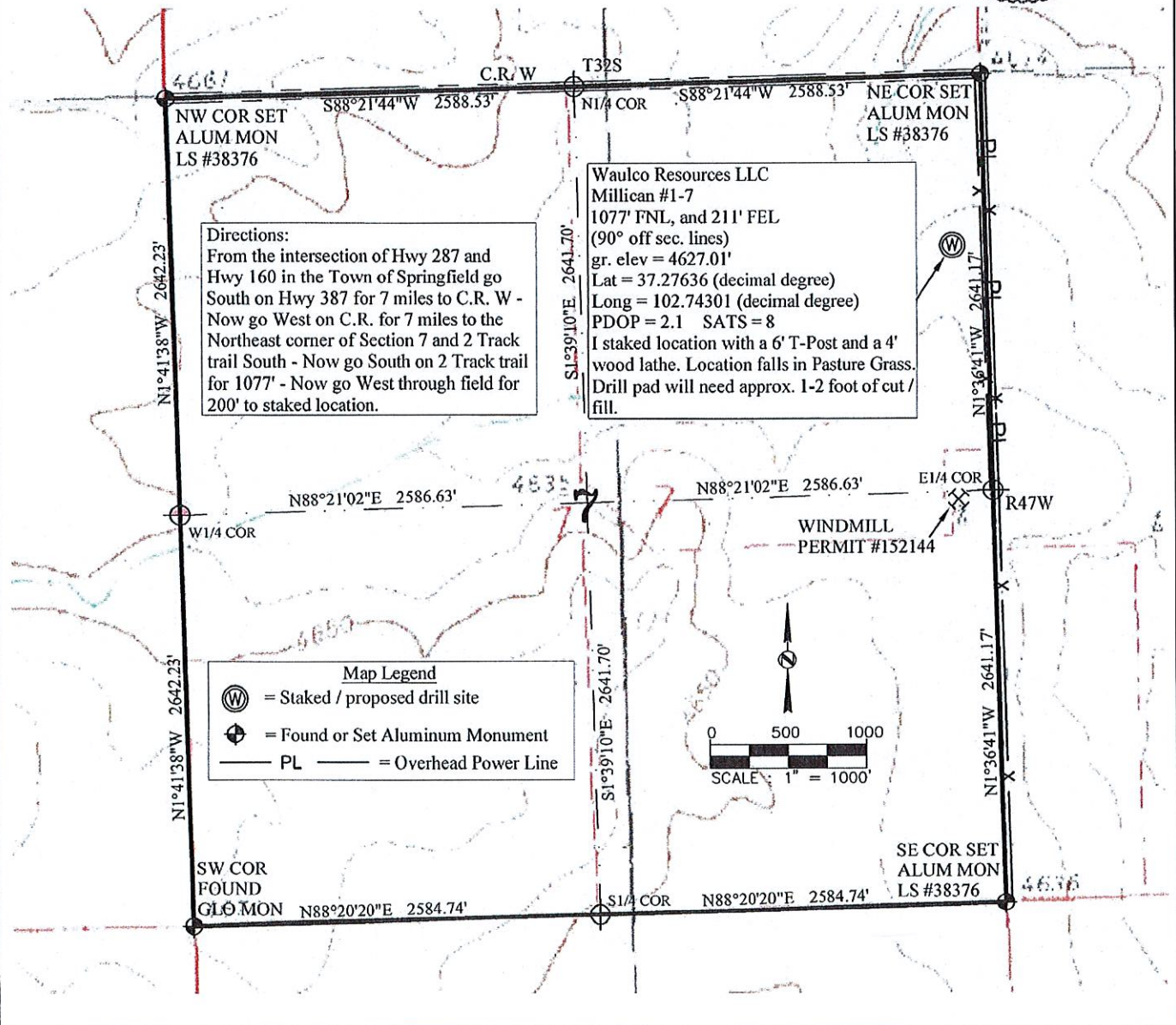
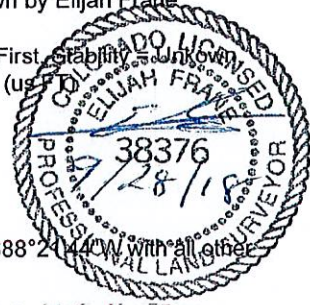
**Date:** Staked on 06/06/18 drawn on 06/12/18.

**Re:** Staked by Elijah Frane  
**Drawn:** Drawn by Elijah Frane

**Basis of Elevation Spot:** USGS BM = N 435, PID = HJ0236, H-Order = Adjusted, V-Order = First, Stability = 5.0, Junc = 0.0, P-DOP = 1.90, Sats = 8 US NAD 83 CO-S, Lat. = 37.3020, Long. = W102.61583 = 4435.27 gr. (us)

**Notes:** See location drawing for improvements within 500 feet of proposed well pad.  
The ground elevation at staked location = 4627.01'.  
This drawing does not represent a monumented survey or Land Survey Plat.

**Basis of Bearing:** Bearings were determined based on the North line of SECTION 7 to bear S88°21'44"W with all other bearings contained herein relative thereto.



**Directions:**  
From the intersection of Hwy 287 and Hwy 160 in the Town of Springfield go South on Hwy 387 for 7 miles to C.R. W - Now go West on C.R. for 7 miles to the Northeast corner of Section 7 and 2 Track trail South - Now go South on 2 Track trail for 1077' - Now go West through field for 200' to staked location.

Waulco Resources LLC  
Millican #1-7  
1077' FNL, and 211' FEL  
(90° off sec. lines)  
gr. elev = 4627.01'  
Lat = 37.27636 (decimal degree)  
Long = 102.74301 (decimal degree)  
PDOP = 2.1 SATS = 8  
I staked location with a 6' T-Post and a 4' wood lathe. Location falls in Pasture Grass.  
Drill pad will need approx. 1-2 foot of cut / fill.

**Map Legend**  
⊙ = Staked / proposed drill site  
⊕ = Found or Set Aluminum Monument  
— PL — = Overhead Power Line

