

Inspection Photos
Location Name: Great Western Pad 6
Location ID: 333026



Photo 1 – Tank Battery



Photo 2 – Stained soil from hammer union

Inspection Photos
Location Name: Great Western Pad 6
Location ID: 333026



Photo 3 – Weeds inside Tank Berm

Inspection Photos
Location Name: Great Western Pad 6
Location ID: 333026



Photo 4 – Wellhead sign for 27-33 missing Emergency Contact info

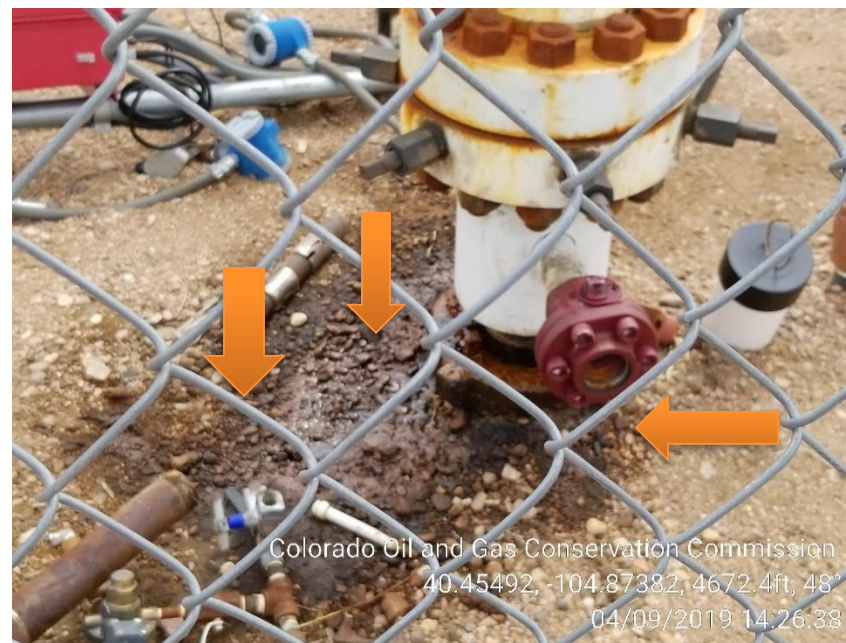


Photo 5 – Well 27-33, Stained Soil from leaking Casing collar

Inspection Photos
Location Name: Great Western Pad 6
Location ID: 333026



Photo 6 – Wellhead for 27-33 Unused equipment



Photo 7 – Well 27-33, unmarked 1" riser, unmarked 2" riser

Inspection Photos
Location Name: Great Western Pad 6
Location ID: 333026



Photo 8 – Wellhead for 27-43, Emergency Contact missing



Photo 9 – Well 27-43, unmarked 1" riser, unmarked 2" riser, Unused equipment

Inspection Photos
Location Name: Great Western Pad 6
Location ID: 333026



Photo 10 – Wellhead for 27-54, Emergency Contact phone is fading and on the ground.



Photo 11 – Well 27-54, unmarked 1" riser, unmarked 2" riser, Unused equipment, stained soil

Inspection Photos
Location Name: Great Western Pad 6
Location ID: 333026



Photo 12 – Wellhead for 27-44, Emergency Contact phone is missing



Photo 13 – Well 27-44, unmarked 1" riser, Unused equipment

Inspection Photos
Location Name: Great Western Pad 6
Location ID: 333026



Photo 14 – Wellhead for 27-34, Emergency Contact phone number is fading and on the ground



Photo 15 – Well 27-34, unmarked 1" riser, Unused equipment