

Great Western Operating Company, LLC

Location	Colorado	Slot	S03 - Tower LD 19-379HN
Field	Wattenburg	Well	Tower LD 19-379HN
Installation	Tower	Wellbore	Tower LD 19-379HN (PWB)

Created by	admin
Date plotted	15-Feb-2019
Plot reference is Tower LD 19-379HN (PWB).	
Ref wellpath is Tower LD 19-379HN (PWP#1).	
Coordinates are in Feet reference S03 - Tower LD 19-379HN.	
True Vertical Depths are reference Rig Datum.	
Measured Depths are reference Rig Datum.	
Rig Datum: Planned Datum #1	
Rig Datum to Mean Sea Level: 5259.60 ft.	
Plot North is aligned to TRUE North.	

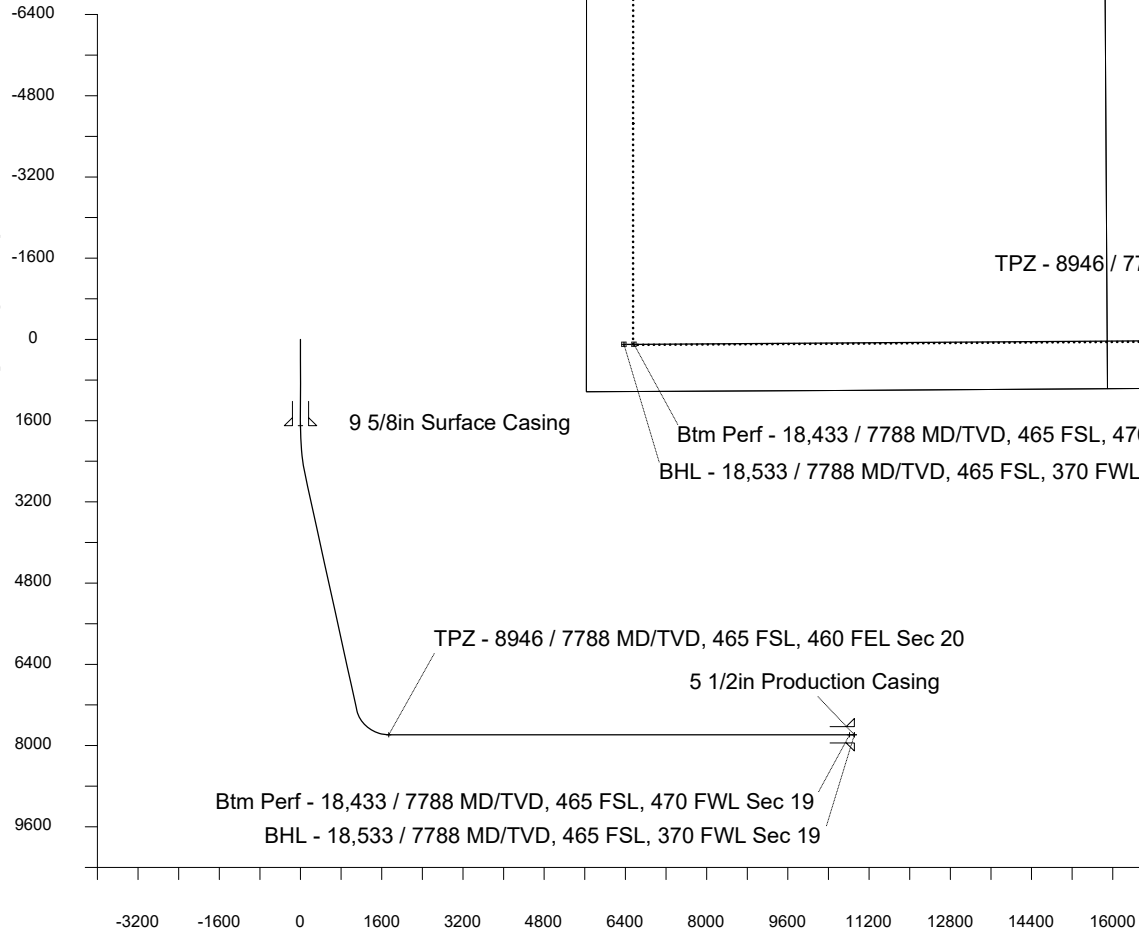
Scale 1 cm = 400 ft

East (Feet) ->

-12000 -11200 -10400 -9600 -8800 -8000 -7200 -6400 -5600 -4800 -4000 -3200 -2400 -1600 -800 0 800 1600

<- True Vertical Depth (Feet)

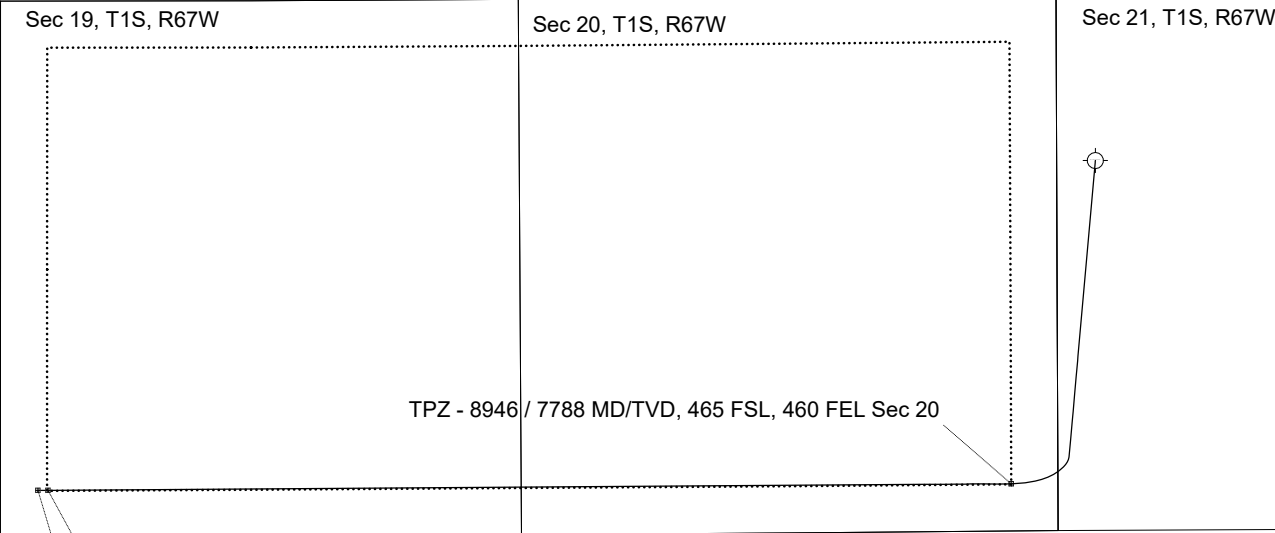
Scale 1 cm = 800 ft



Scale 1 cm = 800 ft

Vertical Section (Feet) ->

Azimuth 252.68 with reference 0.00 N, 0.00 E from S03 - Tower LD 19-379HN



<- North(Feet)

Scale 1 cm = 400 ft

WELL PROFILE DATA

Point	MD	Inc	Azi	TVD	North	East	deg/100ft	V. Sect
Tie on	0.00	0.00	0.00	0.00	S 0.00	W 0.00		-0.00
KOP	1747.00	0.00	185.06	1747.00	S 0.00	W 0.00	0.00	-0.00
End of Build	2747.07	30.00	185.06	2701.99	S 254.91	W 22.58	3.00	97.46
End of Hold	8073.65	30.00	185.06	7314.85	S 2907.98	W 257.55	0.00	1111.81
Target TPZ - ...Sec 20	8946.42	90.00	269.61	7788.00	S 3183.83	W 828.00	10.00	1738.53
Target Btm Pe...Sec 19	18433.42	90.00	269.61	7788.00	S 3248.36	W 10314.78	0.00	10814.14
End of Turn	18435.49	90.00	269.82	7788.00	S 3248.37	W 10316.84	10.00	10816.12
T.D. & Target BHL.... 19	18533.24	90.00	269.82	7788.00	S 3248.69	W 10414.60	0.00	10909.53