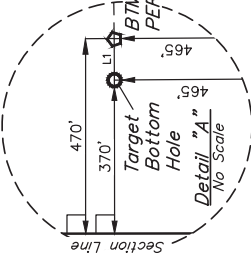
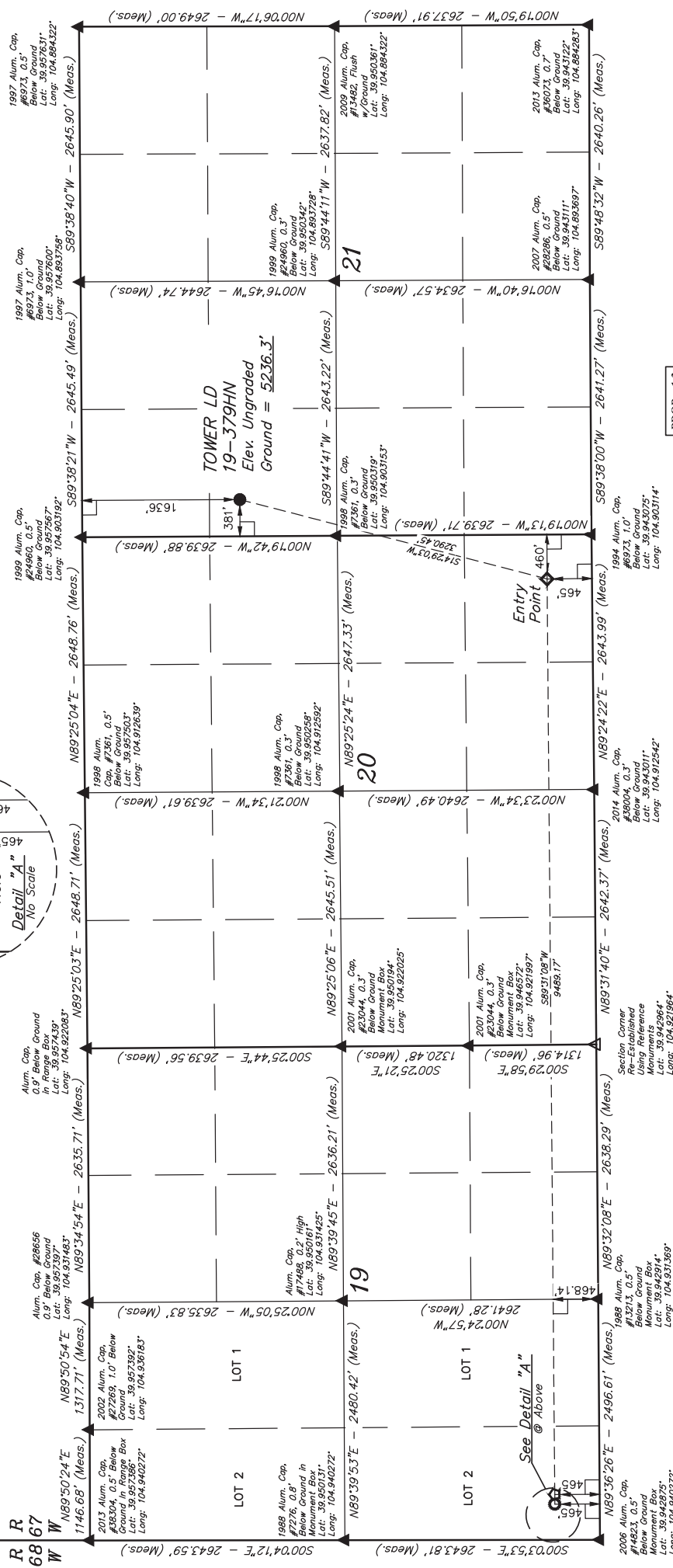


T1S, R67W, 6th P.M.



GREAT WESTERN OPERATING COMPANY  
TOWER LD 19-379HN  
SW 1/4 NW 1/4 SECTION 21, T1S, R67W, 6th P.M.  
ADAMS COUNTY, COLORADO

BASIS OF BEARINGS  
BASIS OF ELEVATION  
BENCHMARK (BS 53 908) LOCATED AT THE INTERSECTION OF T1S, R67W, 6th P.M. TAKEN FROM 1988 PUBLISHED DATUM BY THE UNITED STATES DEPARTMENT OF THE INTERIOR, GEOLOGICAL SURVEY AS BEING 9028 FEET.



PDOP = 1.3

REV: 1	7-27-18	B.L.B.	NEW SL LOCATIONS ADDED (BTM PERF)
JUNTAH ENGINEERING & LAND SURVEYING			
SUELS, LLC Corporate Office * 85 South 200 East Vernal, UT 84078 * (435) 789-1017			
SURVEYED BY	GREG WEIMER, D.D.	06-13-18	SCALE
DRAWN BY	L.C.S.	11-28-16	1" = 1000'
WELL LOCATION PLAT			

NAD 83 (SURFACE LOCATION)	NAD 83 (ENTRY POINT)
LATITUDE = 39°57'11.09" (39.953081)	LATITUDE = 39°56'39.63" (39.944341)
LONGITUDE = 104°54'06.51" (104.901809)	LONGITUDE = 104°54'17.14" (104.904762)
NAD 27 (SURFACE LOCATION)	NAD 27 (ENTRY POINT)
LATITUDE = 39°57'11.15" (39.953097)	LATITUDE = 39°56'39.68" (39.944357)
LONGITUDE = 104°54'04.60" (104.901277)	LONGITUDE = 104°54'15.23" (104.904230)
NAD 83 (BTM PERF)	NAD 83 (TARGET BOTTOM HOLE)
LATITUDE = 39°56'38.97" (39.944158)	LATITUDE = 39°56'38.96" (39.944157)
LONGITUDE = 104°56'18.94" (104.938956)	LONGITUDE = 104°56'20.23" (104.938952)
NAD 27 (BTM PERF)	NAD 27 (TARGET BOTTOM HOLE)
LATITUDE = 39°56'39.03" (39.944174)	LATITUDE = 39°56'39.02" (39.944172)
LONGITUDE = 104°56'17.02" (104.938062)	LONGITUDE = 104°56'18.31" (104.938419)

CERTIFICATE OF RECORDING  
THIS IS TO CERTIFY THAT THE ABOVE  
NOTES OF ACTUAL SURVEYS MADE  
AND THAT THE SAME ARE TRUE AND  
KNOWLEDGE AND BELIEF.

RECORDED LAND SURVEYOR  
RECORD NO. 28385  
STATE OF COLORADO  
JUL 12 2018

- LEGEND:
- 90° SYMBOL
  - PROPOSED WELLHEAD
  - ENTRY POINT
  - BTM PERF
  - TARGET BOTTOM HOLE
  - SECTION CORNERS
  - SECTION CORNERS
  - RE-ESTABLISHED
  - (Not Set on Ground)
  - (NAD 83)