

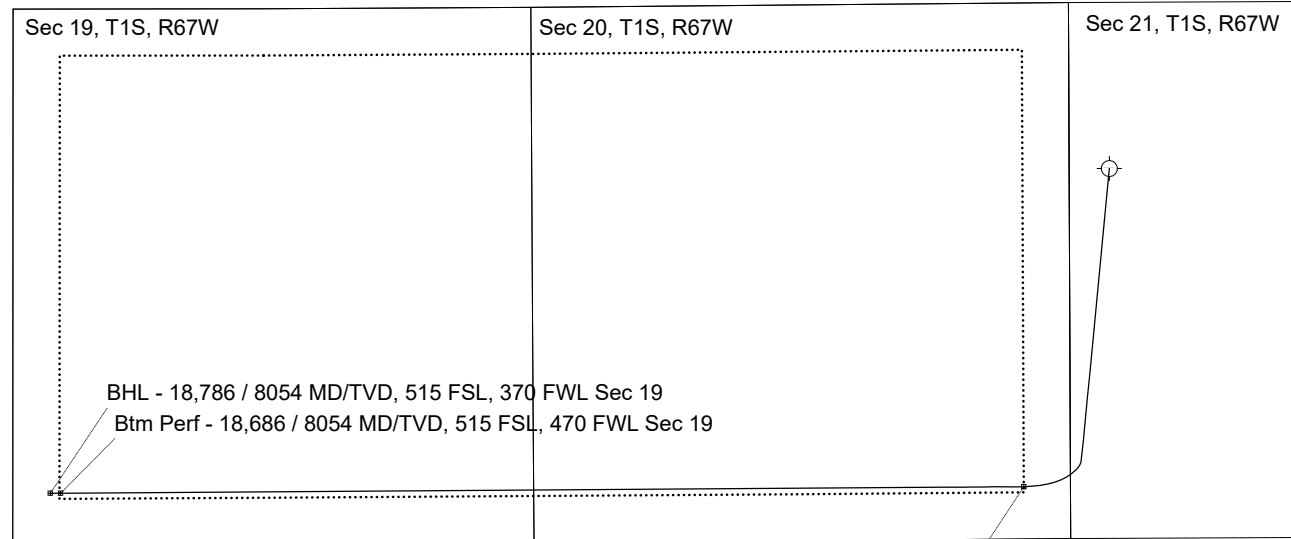
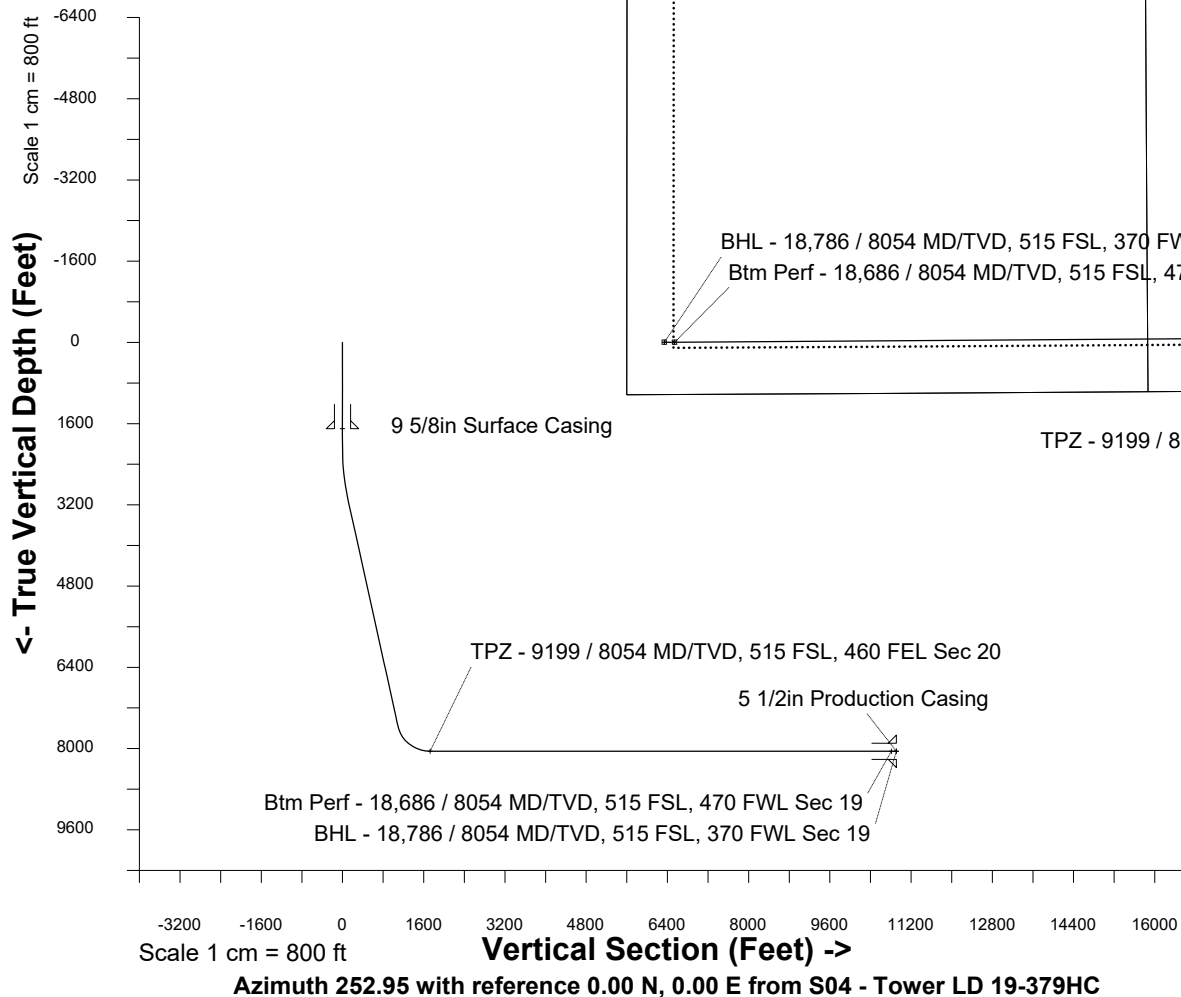
Great Western Operating Company, LLC			
Location	Colorado	Slot	S04 - Tower LD 19-379HC
Field	Wattenburg	Well	Tower LD 19-379HC
Installation	Tower	Wellbore	Tower LD 19-379HC (PWB)

Created by	admin
Date plotted	15-Feb-2019
Plot reference is Tower LD 19-379HC (PWB).	
Ref wellpath is Tower LD 19-379HC (PWP#1).	
Coordinates are in Feet reference S04 - Tower LD 19-379HC.	
True Vertical Depths are reference Rig Datum.	
Measured Depths are reference Rig Datum.	
Rig Datum: Planned Datum #1	
Rig Datum to Mean Sea Level: 5259.60 ft.	
Plot North is aligned to TRUE North.	

Scale 1 cm = 400 ft

East (Feet) ->

-12000 -11200 -10400 -9600 -8800 -8000 -7200 -6400 -5600 -4800 -4000 -3200 -2400 -1600 -800 0 800 1600



<- North(Feet)

Scale 1 cm = 400 ft

WELL PROFILE DATA								
Point	MD	Inc	Azi	TVD	North	East	deg/100ft	V. Sect
Tie on	0.00	0.00	0.00	0.00	S 0.00	W 0.00		-0.00
KOP	2096.00	0.00	185.45	2096.00	S 0.00	W 0.00	0.00	-0.00
End of Build	3096.01	30.00	185.45	3050.94	S 254.72	W 24.30	3.00	97.92
End of Hold	8328.55	30.00	185.45	7582.43	S 2859.20	W 272.76	0.00	1099.16
Target TPZ - ...Sec 20	9199.40	90.00	269.61	8054.00	S 3133.92	W 843.13	10.00	1725.02
Target Btm Pe...Sec 19	18686.10	90.00	269.61	8054.00	S 3198.09	W 10329.62	0.00	10813.32
End of Turn	18686.19	90.00	269.60	8054.00	S 3198.09	W 10329.68	10.00	10813.39
T.D. & Target BHL.... 19	18785.95	90.00	269.60	8054.00	S 3198.77	W 10429.44	0.00	10908.95