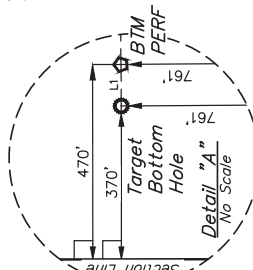


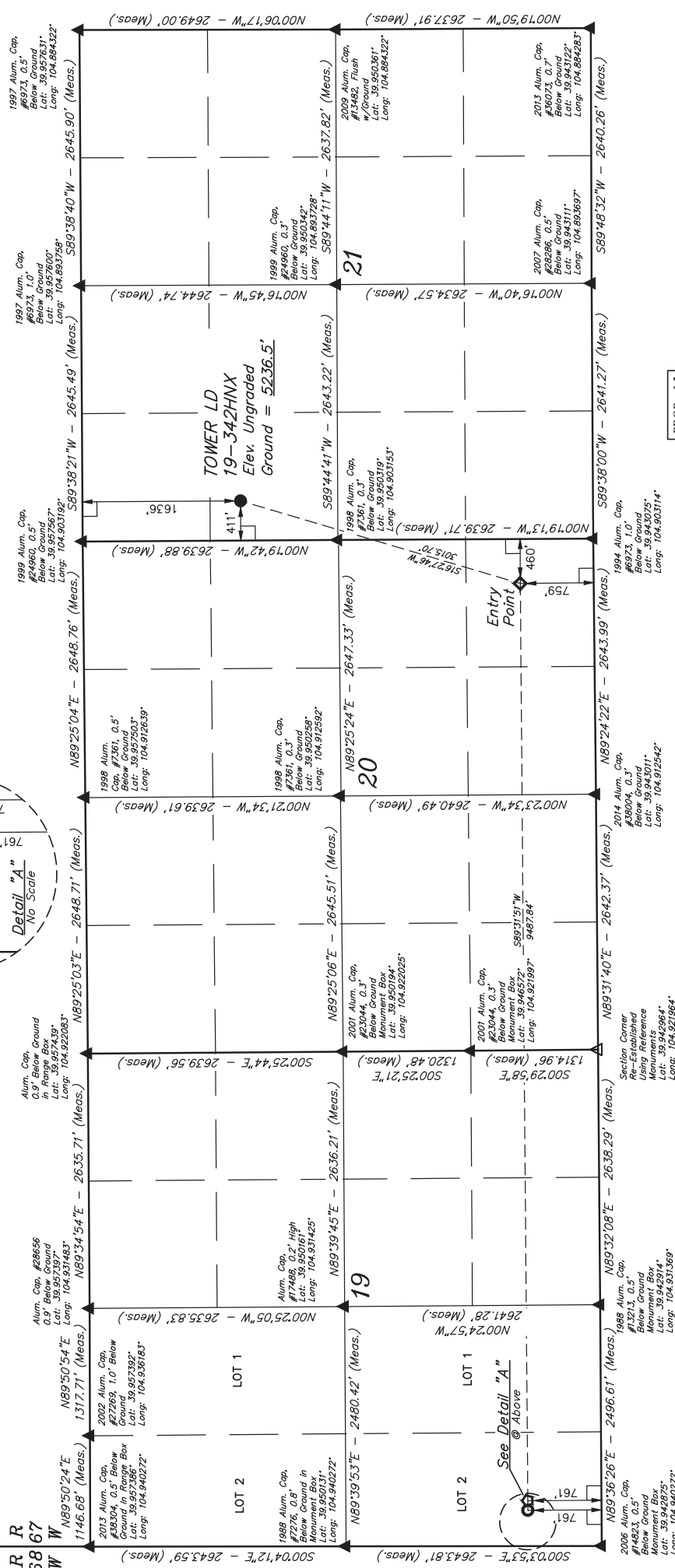
T1S, R67W, 6th P.M.



GREAT WESTERN OPERATING COMPANY  
TOWER LD 19-342HNX  
SW 1/4 NW 1/4 SECTION 21, T1S, R67W, 6th P.M.  
ADAMS COUNTY, COLORADO

BASIS OF BEARINGS  
BASIS OF ELEVATION

BENCHMARK (B) 53 5026 LOCATED IN SECTION 15, T1N, R68W, 6th P.M., TAKEN FROM 1988 PUBLISHED DATUM BY THE UNITED STATES DEPARTMENT OF THE INTERIOR, GEOLOGICAL SURVEY AS BEING 3028 FEET.



PDOP = 1.3

LEGEND:

- 90° SYMBOL
- PROPOSED WELLHEAD
- ENTRY POINT
- BTM PERF.
- TARGET BOTTOM HOLE
- SECTION CORNERS
- SECTION CORNERS
- RE-ESTABLISHED
- (Not Set on Ground)
- (NAD 83)



THIS IS TO CERTIFY THAT THE ABOVE NOTES OF ACTUAL SURVEYS MADE BY ME AND THAT THE SAME ARE TRUE AND KNOWLEDGE AND BELIEF.

NAD 83 (SURFACE LOCATION)	NAD 83 (ENTRY POINT)
LATITUDE = 39°57'11.09" (39.953082)	LATITUDE = 39°56'42.53" (39.945148)
LONGITUDE = 104°54'06.13" (104.901702)	LONGITUDE = 104°54'17.16" (104.904760)
NAD 27 (SURFACE LOCATION)	NAD 27 (ENTRY POINT)
LATITUDE = 39°57'11.15" (39.953097)	LATITUDE = 39°56'42.59" (39.945163)
LONGITUDE = 104°54'04.21" (104.901170)	LONGITUDE = 104°54'15.24" (104.904244)
NAD 83 (BTM PERF)	NAD 83 (TARGET BOTTOM HOLE)
LATITUDE = 39°56'41.89" (39.944971)	LATITUDE = 39°56'41.89" (39.944969)
LONGITUDE = 104°56'18.94" (104.938956)	LONGITUDE = 104°56'20.23" (104.938952)
NAD 27 (BTM PERF)	NAD 27 (TARGET BOTTOM HOLE)
LATITUDE = 39°56'41.95" (39.944986)	LATITUDE = 39°56'41.94" (39.944985)
LONGITUDE = 104°56'17.02" (104.938062)	LONGITUDE = 104°56'18.31" (104.938419)

REV: 1 7-27-18 B.L.B. NEW SL LOCATIONS ADDED BTM PERF

**JUNTAH**  
ENGINEERING & LAND SURVEYING  
SURVEYED BY: GREG WEIMER, D.D.  
DRAWN BY: L.C.S.  
SCALE: 1" = 1000'  
WELL LOCATION PLAT

UELS, LLC  
Corporate Office \* 85 South 200 East  
Vernal, UT 84078 \* (435) 789-1017