

Feb-13-2019  
EMM-2015 [2000.0-2020.0] Dip: 66.26 deg Field: 51918.8 nT  
Lat: N39 57 12.0780 Long: W104 54 6.9048 Elev: 5239.60 ft  
Magnetic North is 8.14 deg East of TRUE North  
To correct azimuth from Magnetic to TRUE add 8.14 deg

# Great Western Operating Company, LLC

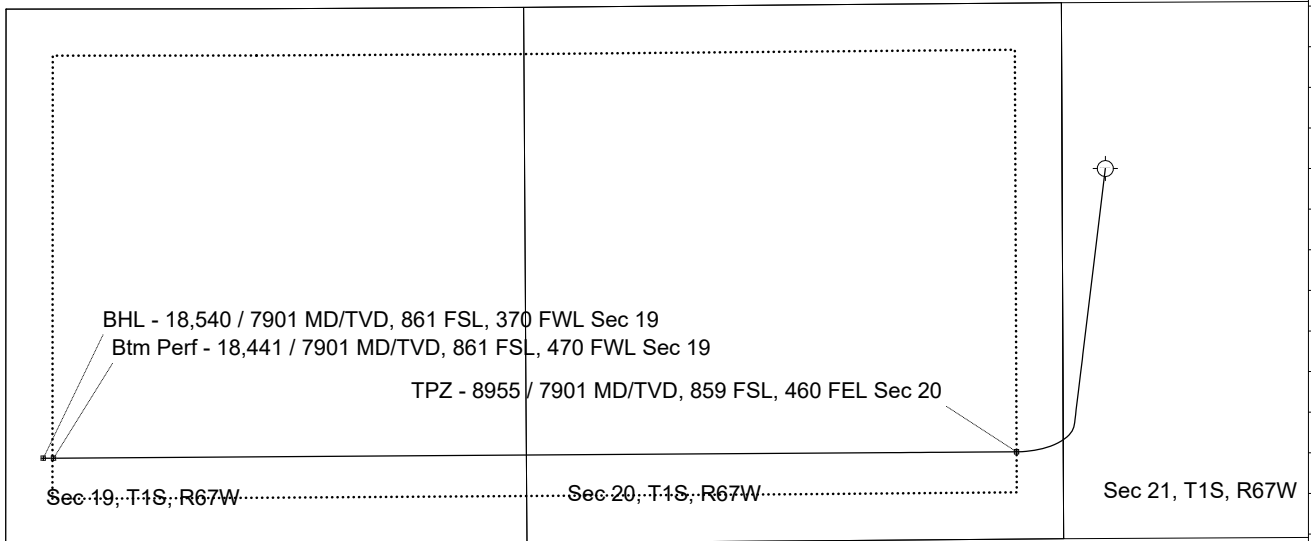
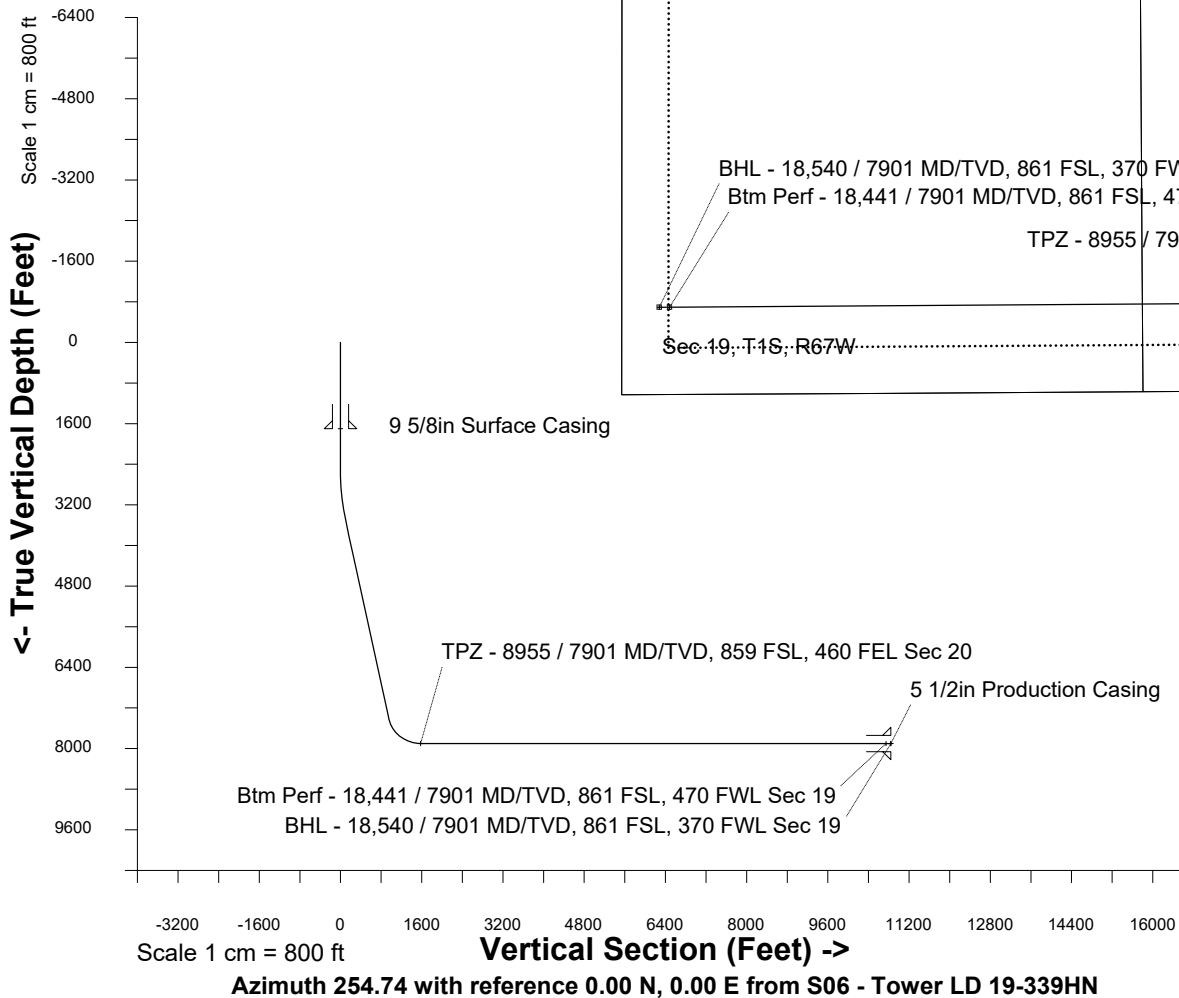
Location	Colorado	Slot	S06 - Tower LD 19-339HN
Field	Wattenburg	Well	Tower LD 19-339HN
Installation	Tower	Wellbore	Tower LD 19-339HN (PWB)

Created by	admin
Date plotted	15-Feb-2019
Plot reference is Tower LD 19-339HN (PWB).	
Ref wellpath is Tower LD 19-339HN (PWP#1).	
Coordinates are in Feet reference S06 - Tower LD 19-339HN.	
True Vertical Depths are reference Rig Datum.	
Measured Depths are reference Rig Datum.	
Rig Datum: Planned Datum #1	
Rig Datum to Mean Sea Level: 5259.60 ft.	
Plot North is aligned to TRUE North.	

Scale 1 cm = 400 ft

East (Feet) ->

-12000 -11200 -10400 -9600 -8800 -8000 -7200 -6400 -5600 -4800 -4000 -3200 -2400 -1600 -800 0 800 1600



WELL PROFILE DATA								
Point	MD	Inc	Azi	TVD	North	East	deg/100ft	V. Sect
Tie on	0.00	0.00	0.00	0.00	S 0.00	W 0.00		-0.00
KOP	2527.00	0.00	186.89	2527.00	S 0.00	W 0.00	0.00	-0.00
End of Build	3526.85	30.00	186.89	3481.80	S 253.95	W 30.69	3.00	96.44
End of Hold	8091.68	30.00	186.89	7435.24	S 2519.56	W 304.49	0.00	956.81
Target TPZ - ...Sec 20	8955.41	90.00	269.62	7901.00	S 2790.03	W 874.53	10.00	1577.93
Target Btm Pe...Sec 19	18440.56	90.00	269.62	7901.00	S 2852.73	W 10359.47	0.00	10745.05
End of Turn	18442.52	90.00	269.82	7901.00	S 2852.74	W 10361.43	10.00	10746.94
T.D. & Target BHL.... 19	18540.38	90.00	269.82	7901.00	S 2853.06	W 10459.29	0.00	10841.44