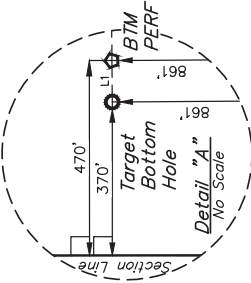
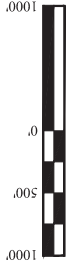


T1S, R67W, 6th P.M.

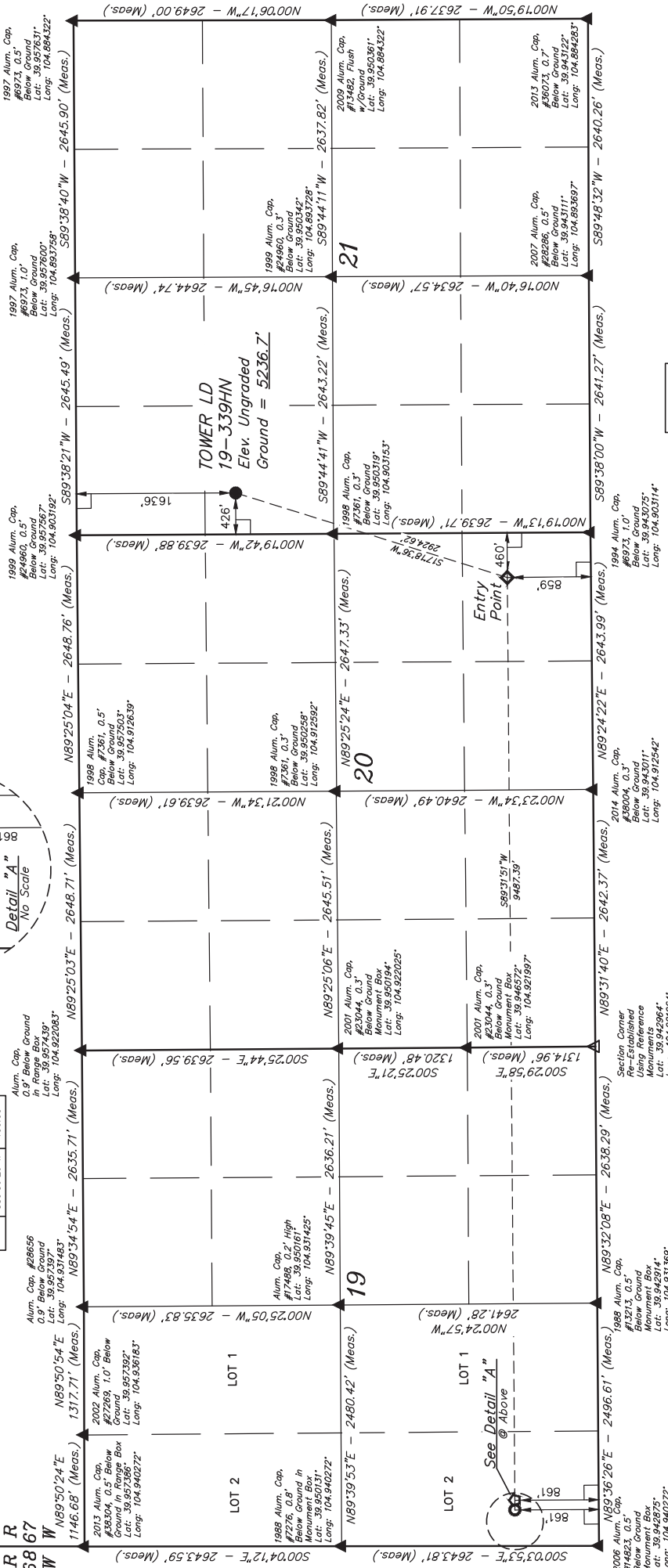


LINE TABLE	
LINE	LENGTH
L1	589'36.28"W
L2	100.00'

GREAT WESTERN OPERATING COMPANY
TOWER LD 19-339HN
SW 1/4 NW 1/4 SECTION 21, T1S, R67W, 6th P.M.
ADAMS COUNTY, COLORADO

BASIS OF BEARINGS
BASIS OF ELEVATION

BENCHMARK BE 53 5026 LOCATED IN SECTION 18, T1N, R68W, 6th P.M., TAKEN FROM 1988 PUBLISHED DATUM BY THE UNITED STATES DEPARTMENT OF THE INTERIOR, GEOLOGICAL SURVEY AS BEING 4028 FEET.



PDOP = 1.3

LEGEND:

- 90° SYMBOL
- PROPOSED WELHEAD
- ENTRY POINT
- BTM PERF
- SECTION CORNERS
- SECTION CORNERS
- RE-ESTABLISHED
- (Not Set on Ground)
- (NAD 83)

THIS IS TO CERTIFY THAT THE ABOVE NOTES OF ACTUAL SURVEYS MADE BY ME AND THAT THE SAME ARE TRUE AND KNOWLEDGE AND BELIEF.



NAD 83 (SURFACE LOCATION)	NAD 83 (ENTRY POINT)
LATITUDE = 39°57'11.09" (39.953082)	LATITUDE = 39°56'43.52" (39.945423)
LONGITUDE = 104°54'05.94" (104.901649)	LONGITUDE = 104°54'17.16" (104.904768)
NAD 27 (SURFACE LOCATION)	NAD 27 (ENTRY POINT)
LATITUDE = 39°57'11.15" (39.953097)	LATITUDE = 39°56'43.58" (39.945438)
LONGITUDE = 104°54'04.02" (104.901117)	LONGITUDE = 104°54'15.25" (104.904235)
NAD 83 (BTM PERF)	NAD 83 (TARGET BOTTOM HOLE)
LATITUDE = 39°56'42.88" (39.945245)	LATITUDE = 39°56'42.88" (39.945244)
LONGITUDE = 104°56'18.94" (104.938956)	LONGITUDE = 104°56'20.23" (104.938952)
NAD 27 (BTM PERF)	NAD 27 (TARGET BOTTOM HOLE)
LATITUDE = 39°56'42.94" (39.945261)	LATITUDE = 39°56'42.95" (39.945259)
LONGITUDE = 104°56'17.02" (104.938662)	LONGITUDE = 104°56'18.31" (104.938419)

REV: 1 7-27-18 B.L.B. NEW SL LOCATIONS ADDED BTM PERF

JUNTAH
ENGINEERING & LAND SURVEYING
SUELS, LLC
Corporate Office * 85 South 200 East
Vernal, UT 84078 * (435) 789-1017

SURVEYED BY GREG WEIMER, D.D.
DRAWN BY L.C.S.
SCALE 1" = 1000'
WELL LOCATION PLAT