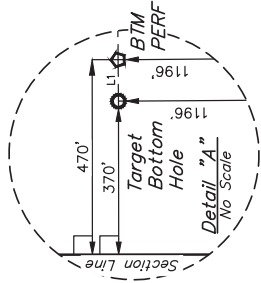


T1S, R67W, 6th P.M.

GREAT WESTERN OPERATING COMPANY

TOWER LD 19-302HN
SW 1/4 NW 1/4 SECTION 21, T1S, R67W, 6th P.M.
ADAMS COUNTY, COLORADO

LINE TABLE		
LINE	DIRECTION	LENGTH
L1	S89°36'26"W	100.00'



BASIS OF BEARINGS
BASED ON THE 1983 NAD 83 DATUM

BASIS OF ELEVATION
BASED ON THE 1983 NAD 83 DATUM
P.A.L. TAKEN FROM 1988 PUBLISHED DATUM BY THE UNITED STATES DEPARTMENT OF THE INTERIOR, GEOLOGICAL SURVEY AS BEING 4025 FEET.



PDOP = 1.3

LEGEND:

- 90° SYMBOL
- PROPOSED WELHEAD
- ENTRY POINT
- BTM PERF
- TARGET BOTTOM HOLE
- SECTION CORNERS
- SECTION CORNERS
- RE-ESTABLISHED
- (Not Set on Ground)
- (NAD 83)

CERTIFICATE OF RECORDING
THIS IS TO CERTIFY THAT THE ABOVE
NOTES OF ACTUAL SURVEYS MADE
AND THAT THE SAME ARE TRUE AND
KNOWLEDGE AND BELIEF.

NAD 83 (SURFACE LOCATION)	NAD 83 (ENTRY POINT)
LATITUDE = 39°57'11.10" (39.953082)	LATITUDE = 39°56'46.83" (39.946442)
LONGITUDE = 104°54'05.74" (104.901595)	LONGITUDE = 104°54'17.18" (104.904772)
NAD 27 (SURFACE LOCATION)	NAD 27 (ENTRY POINT)
LATITUDE = 39°57'11.15" (39.953097)	LATITUDE = 39°56'46.89" (39.946357)
LONGITUDE = 104°54'08.83" (104.901063)	LONGITUDE = 104°54'15.26" (104.904240)
NAD 83 (BTM PERF)	NAD 27 (TARGET BOTTOM HOLE)
LATITUDE = 39°56'46.19" (39.946165)	LATITUDE = 39°56'46.19" (39.946165)
LONGITUDE = 104°56'18.94" (104.938955)	LONGITUDE = 104°56'20.23" (104.938952)
NAD 27 (BTM PERF)	NAD 27 (TARGET BOTTOM HOLE)
LATITUDE = 39°56'46.25" (39.946180)	LATITUDE = 39°56'46.24" (39.946178)
LONGITUDE = 104°56'17.02" (104.938062)	LONGITUDE = 104°56'18.31" (104.938419)

UETLS, LLC
Corporate Office * 85 South 200 East
Vernal, UT 84078 * (435) 789-1017

SURVEYED BY: GREG WEIMER, D.D.
DRAWN BY: L.C.S.
SCALE: 1" = 1000'
WELL LOCATION PLAT

REV: 1 7-27-18 B.L.B. NEW SL LOCATIONS ADDED BTM PERF