

Great Western Operating Company, LLC

Location Colorado
Field Wattenburg
Installation Tower

Slot S11 - Tower LD 19-259HN
Well Tower LD 19-259HN
Wellbore Tower LD 19-259HN (PWB)

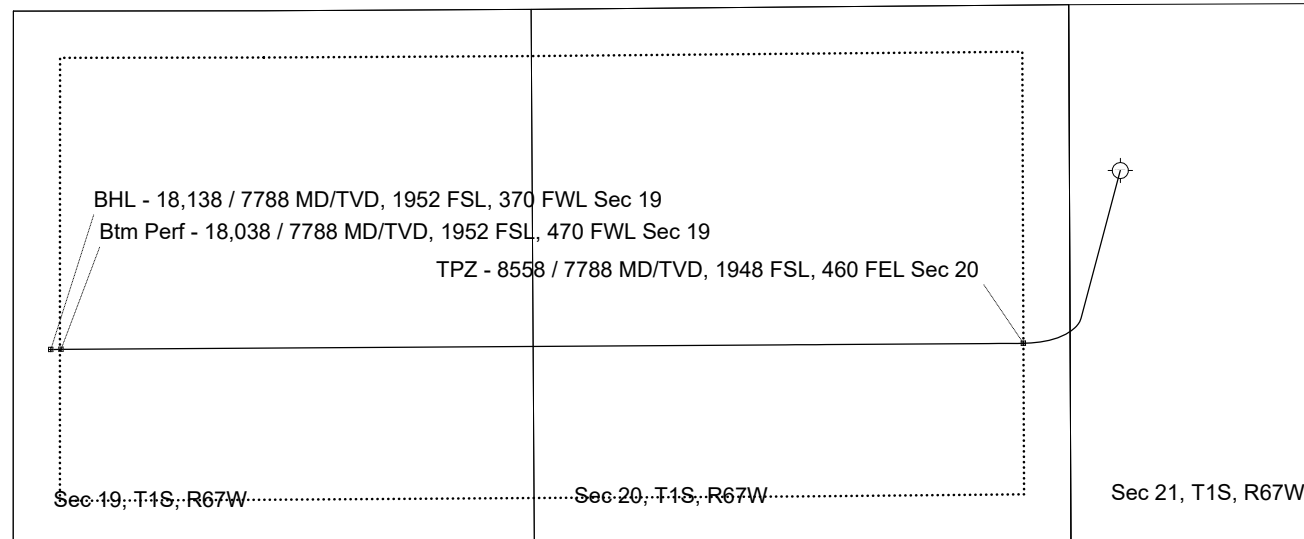
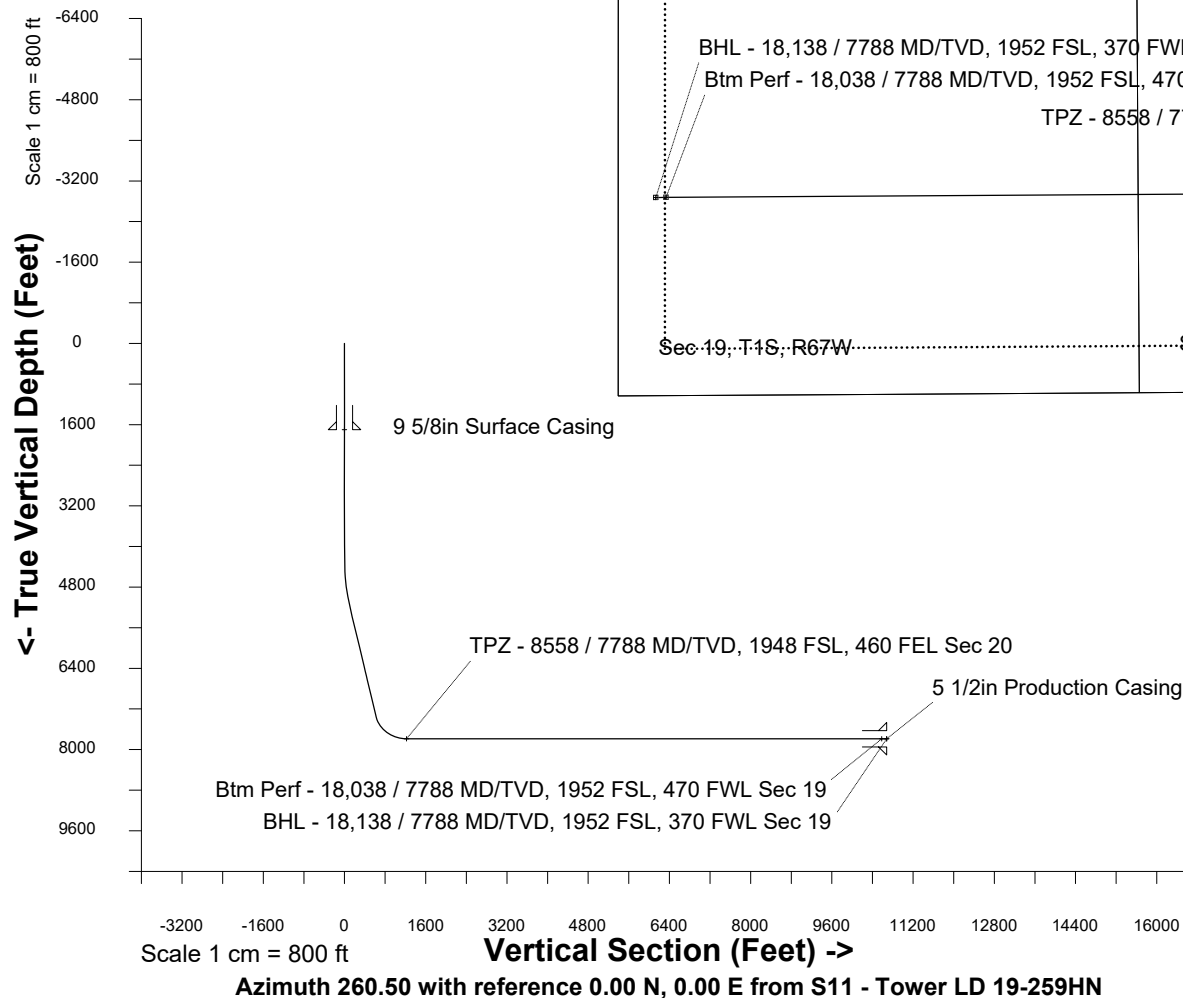
Created by admin
Date plotted 15-Feb-2019

Plot reference is Tower LD 19-259HN (PWB).
Ref wellpath is Tower LD 19-259HN (PWP#1).
Coordinates are in Feet reference S11 - Tower LD 19-259HN.
True Vertical Depths are reference Rig Datum.
Measured Depths are reference Rig Datum.
Rig Datum: Planned Datum #1
Rig Datum to Mean Sea Level: 5259.60 ft.
Plot North is aligned to TRUE North.

Scale 1 cm = 400 ft

East (Feet) ->

-12000 -11200 -10400 -9600 -8800 -8000 -7200 -6400 -5600 -4800 -4000 -3200 -2400 -1600 -800 0 800 1600



<- North(Feet)

Scale 1 cm = 400 ft

WELL PROFILE DATA								
Point	MD	Inc	Azi	TVD	North	East	deg/100ft	V. Sect
Tie on	0.00	0.00	0.00	0.00	S 0.00	W 0.00		-0.00
KOP	4232.00	0.00	194.90	4232.00	S 0.00	W 0.00	0.00	-0.00
End of Build	5232.12	30.00	194.90	5187.03	S 247.33	W 65.80	3.00	105.72
End of Hold	7733.66	30.00	194.90	7353.35	S 1456.19	W 387.41	0.00	622.43
Target TPZ - ...Sec 20	8558.02	90.00	269.64	7788.00	S 1701.92	W 953.83	10.00	1221.64
Target Btm Pe...Sec 19	18038.26	90.00	269.64	7788.00	S 1762.04	W 10433.88	0.00	10581.60
End of Turn	18038.56	90.00	269.61	7788.00	S 1762.04	W 10434.17	10.00	10581.90
T.D. & Target BHL.... 19	18138.36	90.00	269.61	7788.00	S 1762.72	W 10533.97	0.00	10680.44