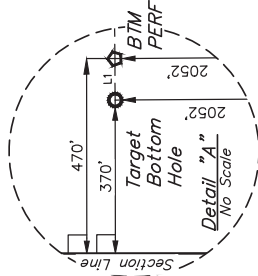
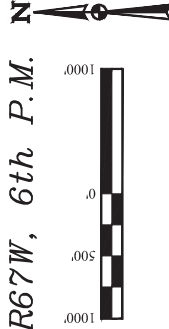


T1S, R67W, 6th P.M.

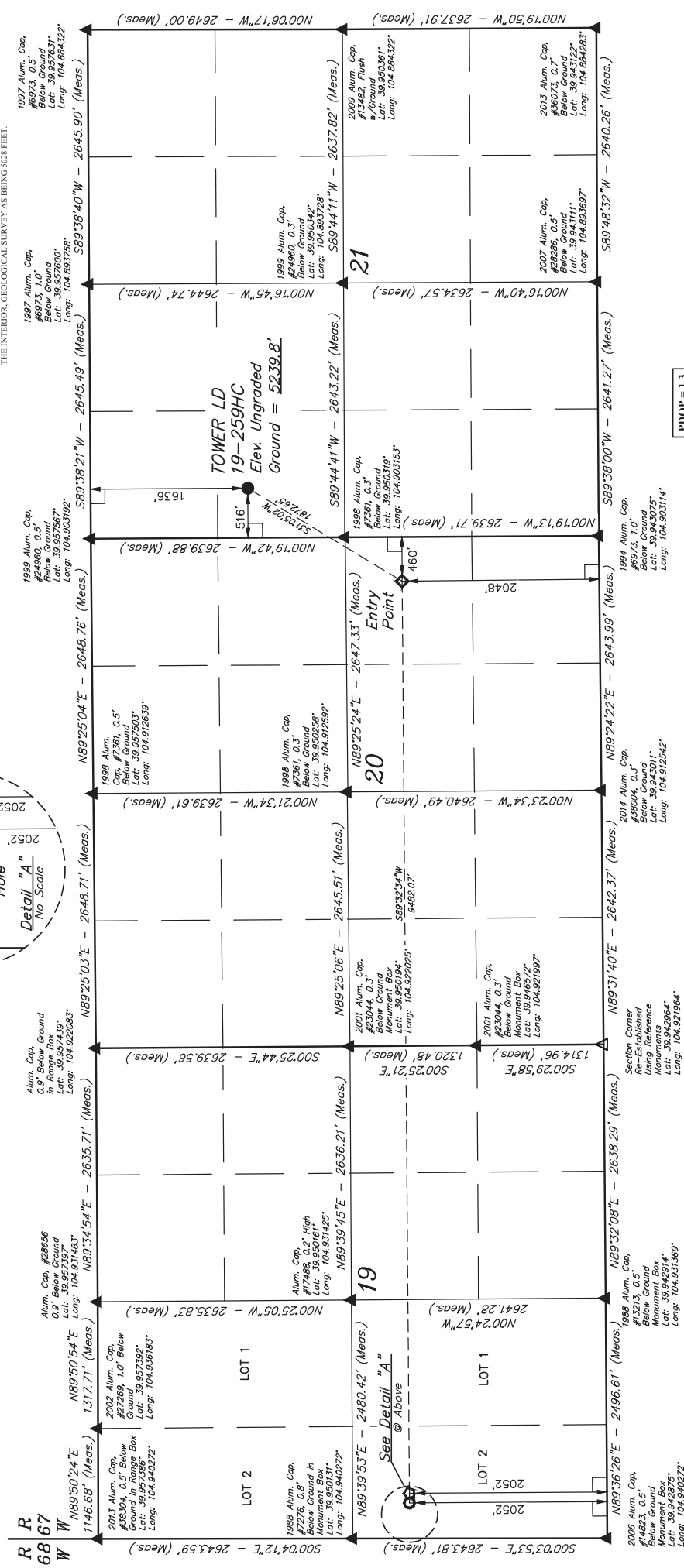
GREAT WESTERN OPERATING COMPANY

TOWER LD 19-259HC  
SW 1/4 NW 1/4 SECTION 21, T1S, R67W, 6th P.M.  
ADAMS COUNTY, COLORADO

BASIS OF BEARINGS & ANGLES OBSERVATION  
BASIS OF ELEVATION  
BENCHMARK (B) 53 4026 LOCATED IN SECTION 18, T1S, R67W, 6th P.M., TAKEN FROM 1988 PUBLISHED DATUM BY THE UNITED STATES DEPARTMENT OF THE INTERIOR, GEOLOGICAL SURVEY AS BEING 4025 FEET.



LINE TABLE		
LINE	DIRECTION	LENGTH
L1	S89°36'26"W	100.00'



PDOP = 1.3

LEGEND:

- 90° SYMBOL
- PROPOSED WELLHEAD
- ENTRY POINT
- BTM PERF.
- TARGET BOTTOM HOLE
- SECTION CORNERS
- SECTION CORNERS RE-ESTABLISHED
- (Not Set on Ground.) (NAD 83)

CERTIFICATE OF RECORDING  
THIS IS TO CERTIFY THAT THE ABOVE NOTES OF ACTUAL SURVEYS MADE BY ME AND THAT THE SAME ARE TRUE AND KNOWLEDGE AND BELIEF.

NAD 83 (SURFACE LOCATION)	NAD 83 (ENTRY POINT)
LATITUDE = 39°57'11.10" (39.953083)	LATITUDE = 39°56'55.27" (39.948686)
LONGITUDE = 104°54'04.78" (104.901328)	LONGITUDE = 104°54'17.22" (104.904783)
NAD 27 (SURFACE LOCATION)	NAD 27 (ENTRY POINT)
LATITUDE = 39°57'11.15" (39.953098)	LATITUDE = 39°56'55.32" (39.948701)
LONGITUDE = 104°54'02.87" (104.900796)	LONGITUDE = 104°54'15.31" (104.904533)
NAD 83 (BTM PERF)	NAD 83 (TARGET BOTTOM HOLE)
LATITUDE = 39°56'54.65" (39.948514)	LATITUDE = 39°56'54.64" (39.948512)
LONGITUDE = 104°56'18.94" (104.938595)	LONGITUDE = 104°56'20.23" (104.938952)
NAD 27 (BTM PERF)	NAD 27 (TARGET BOTTOM HOLE)
LATITUDE = 39°56'54.71" (39.948529)	LATITUDE = 39°56'54.70" (39.948528)
LONGITUDE = 104°56'17.02" (104.938662)	LONGITUDE = 104°56'18.31" (104.938418)

UETLS, LLC  
Corporate Office \* 85 South 200 East  
Vernal, UT 84078 \* (435) 789-1017  
SURVEYED BY: GREG WEIMER, D.D.  
DRAWN BY: L.C.S.  
SCALE: 1" = 1000'  
WELL LOCATION PLAT