

Feb-13-2019
EMM-2015 [2000.0-2020.0] Dip: 66.26 deg Field: 51918.8 nT
Lat: N39 57 12.0780 Long: W104 54 6.9048 Elev: 5239.60 ft
Magnetic North is 8.14 deg East of TRUE North
To correct azimuth from Magnetic to TRUE add 8.14 deg

Great Western Operating Company, LLC

Location	Colorado	Slot	S13 - Tower LD 19-222HNX
Field	Wattenburg	Well	Tower LD 19-222HNX
Installation	Tower	Wellbore	Tower LD 19-222HNX (PWB)

Created by	admin
Date plotted	15-Feb-2019
Plot reference is Tower LD 19-222HNX (PWB).	
Ref wellpath is Tower LD 19-222HNX (PWP#1).	
Coordinates are in Feet reference S13 - Tower LD 19-222HNX.	
True Vertical Depths are reference Rig Datum.	
Measured Depths are reference Rig Datum.	
Rig Datum: Planned Datum #1	
Rig Datum to Mean Sea Level: 5259.60 ft.	
Plot North is aligned to TRUE North.	

Scale 1 cm = 400 ft

East (Feet) ->

-12000 -11200 -10400 -9600 -8800 -8000 -7200 -6400 -5600 -4800 -4000 -3200 -2400 -1600 -800 0 800 1600

Scale 1 cm = 800 ft

<- True Vertical Depth (Feet)

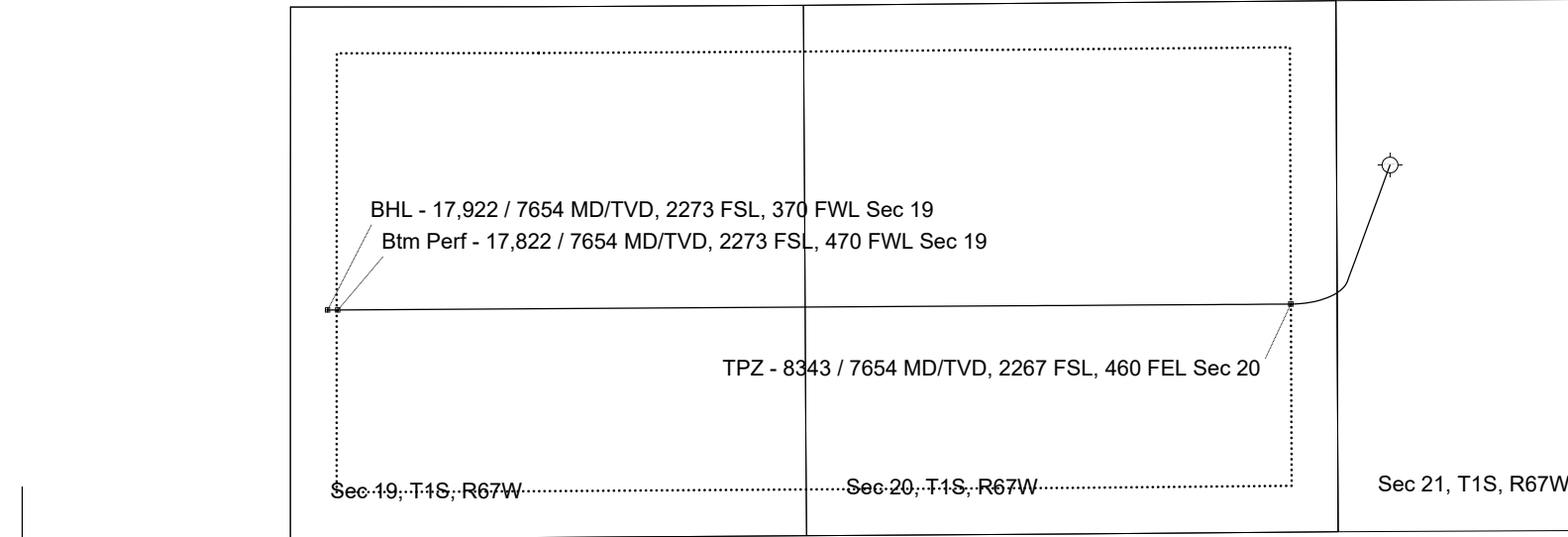
-6400
-4800
-3200
-1600
0
1600
3200
4800
6400
8000
9600

-3200 -1600 0 1600 3200 4800 6400 8000 9600 11200 12800 14400 16000

Scale 1 cm = 800 ft

Vertical Section (Feet) ->

Azimuth 262.23 with reference 0.00 N, 0.00 E from S13 - Tower LD 19-222HNX



9 5/8in Surface Casing

TPZ - 8343 / 7654 MD/TVD, 2267 FSL, 460 FEL Sec 20

5 1/2in Production Casing

Btm Perf - 17,922 / 7654 MD/TVD, 2273 FSL, 470 FWL Sec 19

BHL - 17,922 / 7654 MD/TVD, 2273 FSL, 370 FWL Sec 19

<- North(Feet)

2400
1600
800
0
-800
-1600
-2400
-3200
-4000
-4800
-5600
-6400

Scale 1 cm = 400 ft

WELL PROFILE DATA

Point	MD	Inc	Azi	TVD	North	East	deg/100ft	V. Sect
Tie on	0.00	0.00	0.00	0.00	S 0.00	W 0.00		-0.00
KOP	4597.00	0.00	200.10	4597.00	S 0.00	W 0.00	0.00	-0.00
End of Build	5596.90	30.00	200.10	5551.84	S 240.24	W 87.92	3.00	119.60
End of Hold	7543.94	30.00	200.10	7238.08	S 1154.37	W 422.47	0.00	574.70
Target TPZ - ...Sec 20	8343.33	90.00	269.65	7654.00	S 1382.80	W 985.22	10.00	1163.17
Target Btm Pe...Sec 19	17822.03	90.00	269.65	7654.00	S 1441.09	W 10463.74	0.00	10562.51
End of Turn	17822.43	90.00	269.61	7654.00	S 1441.09	W 10464.15	10.00	10562.91
T.D. & Target BHL.... 19	17922.12	90.00	269.61	7654.00	S 1441.78	W 10563.84	0.00	10661.77