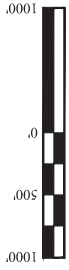
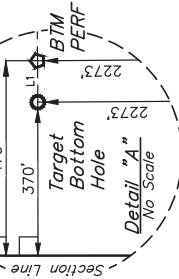


T1S, R67W, 6th P.M.



| LINE TABLE | | |
|------------|-------------|---------|
| LINE | DIRECTION | LENGTH |
| L1 | S89°36'28"W | 100.00' |



GREAT WESTERN OPERATING COMPANY
TOWER LD 19-222HNX
SW 1/4 NW 1/4 SECTION 21, T1S, R67W, 6th P.M.
ADAMS COUNTY, COLORADO

BASIS OF BEARINGS

BASIS OF ELEVATION

BENCHMARK (B) 53 4026 LOCAL ELEVATION IS 7114.88W 408
P.M. TAKEN FROM 1988 PUBLISHED DATUM BY THE UNITED STATES DEPARTMENT OF
THE INTERIOR, GEOLOGICAL SURVEY AS BEING 4028 FEET.



PDOP = 1.3

| NAD 83 (SURFACE LOCATION) | NAD 83 (ENTRY POINT) |
|--|--|
| LATITUDE = 39°57'11.10" (39.953083) | LATITUDE = 39°56'37.43" (39.949287) |
| LONGITUDE = 104°54'04.59" (104.901274) | LONGITUDE = 104°54'17.24" (104.904788) |
| NAD 27 (SURFACE LOCATION) | NAD 27 (ENTRY POINT) |
| LATITUDE = 39°57'11.15" (39.953099) | LATITUDE = 39°56'37.49" (39.949302) |
| LONGITUDE = 104°54'02.67" (104.900742) | LONGITUDE = 104°54'15.32" (104.904556) |
| NAD 83 (BTM PERF) | NAD 83 (TARGET BOTTOM HOLE) |
| LATITUDE = 39°56'56.83" (39.949121) | LATITUDE = 39°56'56.83" (39.949119) |
| LONGITUDE = 104°56'18.94" (104.938951) | LONGITUDE = 104°56'20.23" (104.938952) |
| NAD 27 (BTM PERF) | NAD 27 (TARGET BOTTOM HOLE) |
| LATITUDE = 39°56'56.89" (39.949136) | LATITUDE = 39°56'56.88" (39.949134) |
| LONGITUDE = 104°56'17.02" (104.938662) | LONGITUDE = 104°56'18.31" (104.938418) |

CERTIFICATE OF RECORDING
THIS IS TO CERTIFY THAT THE ABOVE
NOTES OF ACTUAL SURVEYS MADE
AND THAT THE SAME ARE TRUE AND
KNOWLEDGE AND BELIEF.

- LEGEND:
- 90° SYMBOL
 - PROPOSED WELLHEAD
 - ENTRY POINT
 - BTM PERF
 - TARGET BOTTOM HOLE
 - SECTION CORNERS
 - RE-ESTABLISHED
 - (Not Set on Ground)
 - (NAD 83)

UELS, LLC
Corporate Office * 85 South 200 East
Vernal, UT 84078 * (435) 789-1017
SURVEYED BY: GREG WEIMER, D.D.
DRAWN BY: L.C.S.
SCALE: 1" = 1000'
WELL LOCATION PLAT