

Great Western Operating Company, LLC

Location	Colorado	Slot	S15 - Tower LD 19-219HN
Field	Wattenburg	Well	Tower LD 19-219HN
Installation	Tower	Wellbore	Tower LD 19-219HN (PWB)

Created by	admin
Date plotted	15-Feb-2019
Plot reference is Tower LD 19-219HN (PWB).	
Ref wellpath is Tower LD 19-219HN (PWP#1).	
Coordinates are in Feet reference S15 - Tower LD 19-219HN.	
True Vertical Depths are reference Rig Datum.	
Measured Depths are reference Rig Datum.	
Rig Datum: Planned Datum #1	
Rig Datum to Mean Sea Level: 5259.60 ft.	
Plot North is aligned to TRUE North.	

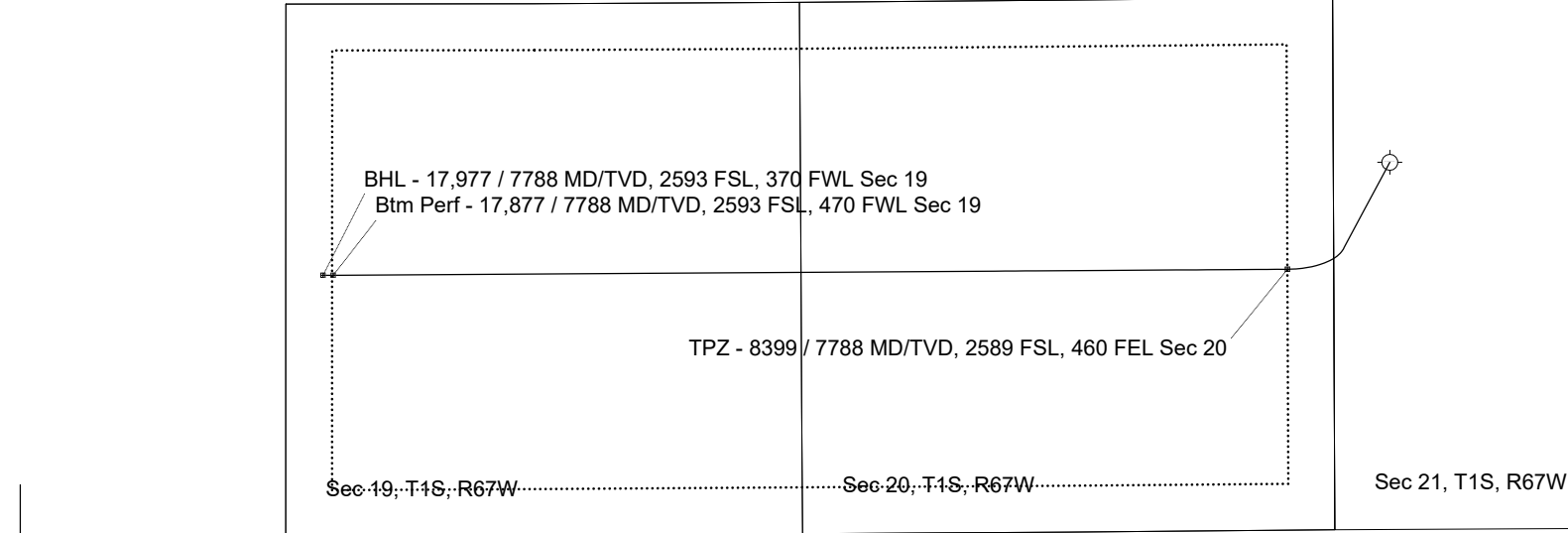
Scale 1 cm = 400 ft

East (Feet) ->

-12000 -11200 -10400 -9600 -8800 -8000 -7200 -6400 -5600 -4800 -4000 -3200 -2400 -1600 -800 0 800 1600

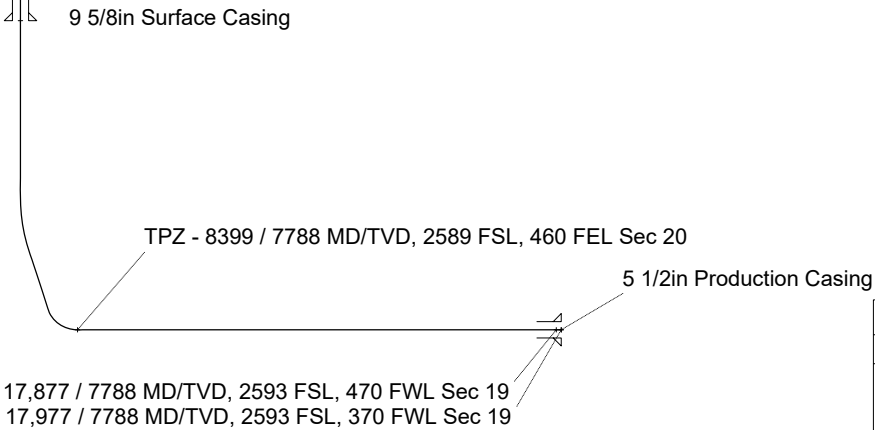
<- True Vertical Depth (Feet)

Scale 1 cm = 800 ft



<- North(Feet)

Scale 1 cm = 400 ft



Scale 1 cm = 800 ft

Vertical Section (Feet) ->

Azimuth 263.95 with reference 0.00 N, 0.00 E from S15 - Tower LD 19-219HN

WELL PROFILE DATA

Point	MD	Inc	Azi	TVD	North	East	deg/100ft	V. Sect
Tie on	0.00	0.00	0.00	0.00	S 0.00	W 0.00		-0.00
KOP	5196.00	0.00	208.18	5196.00	S 0.00	W 0.00	0.00	-0.00
End of Build	6196.03	30.00	208.18	6150.95	S 225.55	W 120.86	3.00	143.95
End of Hold	7637.29	30.00	208.18	7399.11	S 860.74	W 461.23	0.00	549.35
Target TPZ - ...Sec 20	8399.04	90.00	269.64	7788.00	S 1061.50	W 1016.33	10.00	1122.50
Target Btm Pe...Sec 19	17876.51	90.00	269.64	7788.00	S 1121.60	W 10493.61	0.00	10553.37
End of Turn	17876.80	90.00	269.61	7788.00	S 1121.60	W 10493.90	10.00	10553.67
T.D. & Target BHL.... 19	17976.60	90.00	269.61	7788.00	S 1122.29	W 10593.70	0.00	10652.98