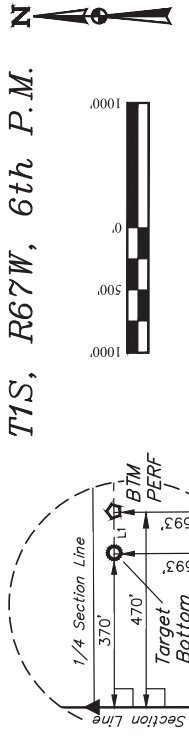


T1S, R67W, 6th P.M.

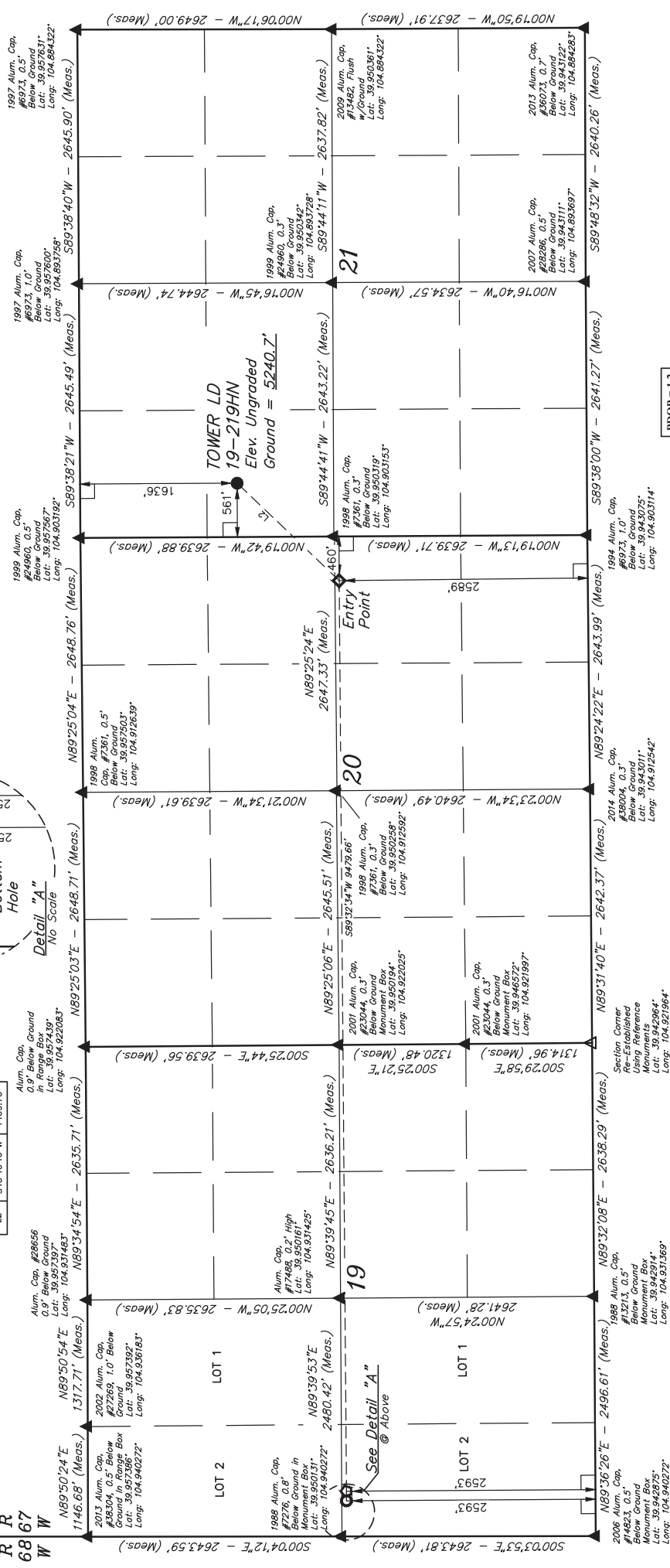
GREAT WESTERN OPERATING COMPANY

TOWER LD 19-219HN
SW 1/4 NW 1/4 SECTION 21, T1S, R67W, 6th P.M.
ADAMS COUNTY, COLORADO

BASIS OF BEARINGS
BASIS OF ELEVATION
BENCHMARK (B) 53 4026 LOCAL ELEVATION 13.71m (45.00')
P.A.L. TAKEN FROM 1988 PUBLISHED DATUM BY THE UNITED STATES DEPARTMENT OF THE INTERIOR, GEOLOGICAL SURVEY AS BEING 4025 FEET.



LINE TABLE	
LINE	DIRECTION LENGTH
L1	S89°36'26"W 100.00'
L2	S43°40'16"W 1469.70'



LEGEND:
= 90° SYMBOL
= PROPOSED WELLHEAD
= ENTRY POINT
= BENCH MARK
= TARGET BOTTOM HOLE
= SECTION CORNERS
= SECTION CORNERS
= RE-ESTABLISHED
(Not Set on Ground.)
(NAD 83)

THIS IS TO CERTIFY THAT THE ABOVE NOTES OF ACTUAL SURVEYS MADE BY ME AND THAT THE SAME ARE TRUE AND KNOWLEDGE AND BELIEF.

CERTIFICATE OF RECORDING
RECORDED IN BOOK NO. 2835
RECORDED IN PAGE NO. 18
STATE OF COLORADO

RECORDING OFFICE
11-28-16
SCALE
1" = 1000'

SURVEYED BY
GREG WEIMER, D.D.
L.C.S.

DRAWN BY
GREG WEIMER, D.D.
L.C.S.

UETLS, LLC
Corporate Office * 85 South 200 East
Vernal, UT 84078 * (435) 789-1017

REV: 1 7-27-18 B.L.B. NEW SL LOCATIONS ADDED (BTM PER)

NAD 83 (SURFACE LOCATION)
LATITUDE = 39°57'11.10" (39.953084)
LONGITUDE = 104°54'04.20" (104.901167)
NAD 27 (ENTRY POINT)
LATITUDE = 39°57'00.67" (39.950186)
LONGITUDE = 104°54'15.34" (104.904560)
NAD 83 (BENCH MARK)
LATITUDE = 39°56'00.00" (39.933333)
LONGITUDE = 104°56'18.94" (104.938595)
NAD 27 (BENCH MARK)
LATITUDE = 39°57'00.05" (39.950013)
LONGITUDE = 104°56'17.02" (104.938662)

NAD 83 (ENTRY POINT)
LATITUDE = 39°57'00.67" (39.950186)
LONGITUDE = 104°54'17.25" (104.904592)
NAD 27 (ENTRY POINT)
LATITUDE = 39°57'00.67" (39.950186)
LONGITUDE = 104°54'15.34" (104.904560)
NAD 83 (TARGET BOTTOM HOLE)
LATITUDE = 39°56'59.99" (39.949997)
LONGITUDE = 104°56'20.23" (104.938952)
NAD 27 (TARGET BOTTOM HOLE)
LATITUDE = 39°57'00.05" (39.950013)
LONGITUDE = 104°56'18.31" (104.938418)