

Feb-13-2019
EMM-2015 [2000.0-2020.0] Dip: 66.26 deg Field: 51918.8 nT
Lat: N39 57 12.0780 Long: W104 54 6.9048 Elev: 5239.60 ft
Magnetic North is 8.14 deg East of TRUE North
To correct azimuth from Magnetic to TRUE add 8.14 deg

Great Western Operating Company, LLC

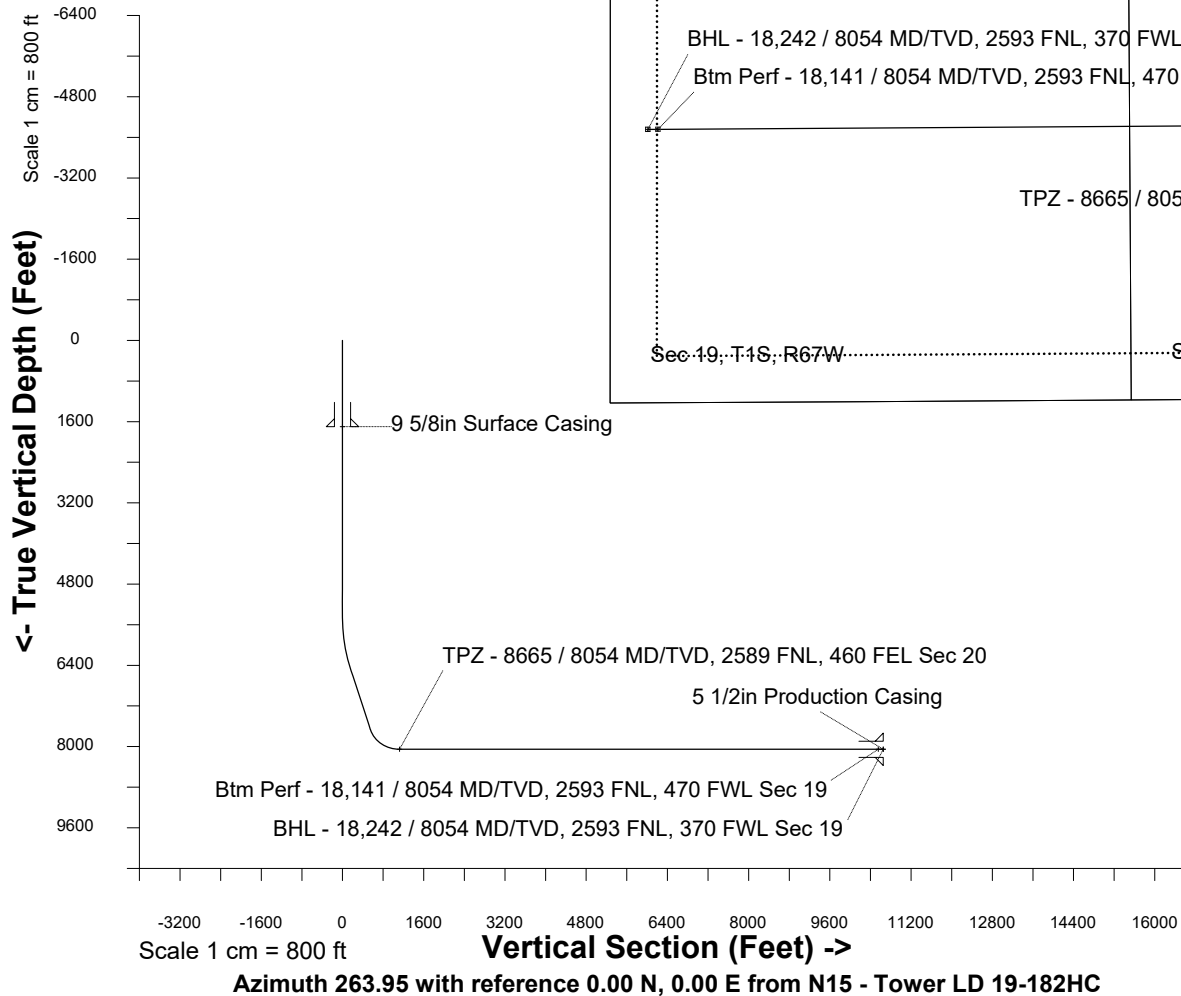
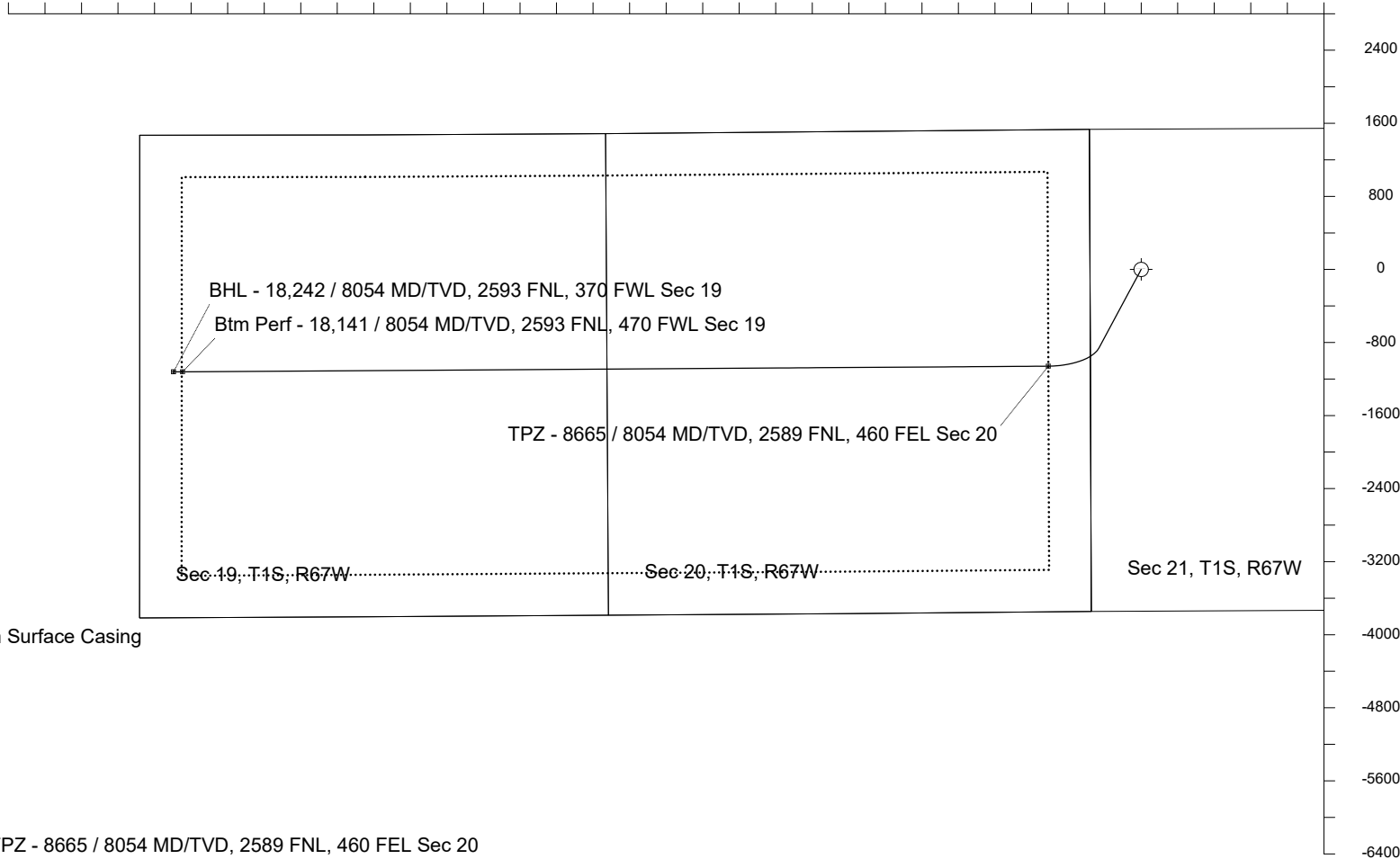
Location Colorado
Field Wattenburg
Installation Tower
Slot N15 - Tower LD 19-182HC
Well Tower LD 19-182HC
Wellbore Tower LD 19-182HC (PWB)

Created by admin
Date plotted 15-Feb-2019
Plot reference is Tower LD 19-182HC (PWB).
Ref wellpath is Tower LD 19-182HC (PWP#1).
Coordinates are in Feet reference N15 - Tower LD 19-182HC.
True Vertical Depths are reference Rig Datum.
Measured Depths are reference Rig Datum.
Rig Datum: Planned Datum #1
Rig Datum to Mean Sea Level: 5259.60 ft.
Plot North is aligned to TRUE North.

Scale 1 cm = 400 ft

East (Feet) ->

-12000 -11200 -10400 -9600 -8800 -8000 -7200 -6400 -5600 -4800 -4000 -3200 -2400 -1600 -800 0 800 1600



WELL PROFILE DATA								
Point	MD	Inc	Azi	TVD	North	East	deg/100ft	V. Sect
Tie on	0.00	0.00	0.00	0.00	S 0.00	W 0.00		-0.00
KOP	5465.00	0.00	208.24	5465.00	S 0.00	W 0.00	0.00	-0.00
End of Build	6465.17	30.00	208.24	6420.07	S 225.49	W 121.11	3.00	144.19
End of Hold	7903.16	30.00	208.24	7665.35	S 859.01	W 461.35	0.00	549.29
Target TPZ - ...Sec 20	8664.59	90.00	269.62	8054.00	S 1059.68	W 1016.33	10.00	1122.31
Target Btm Pe...Sec 19	18141.47	90.00	269.62	8054.00	S 1121.97	W 10493.01	0.00	10552.81
End of Turn	18143.42	90.00	269.82	8054.00	S 1121.98	W 10494.95	10.00	10554.75
T.D. & Target BHL.... 19	18241.57	90.00	269.82	8054.00	S 1122.29	W 10593.10	0.00	10652.38