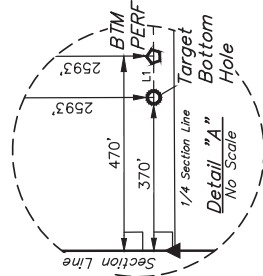
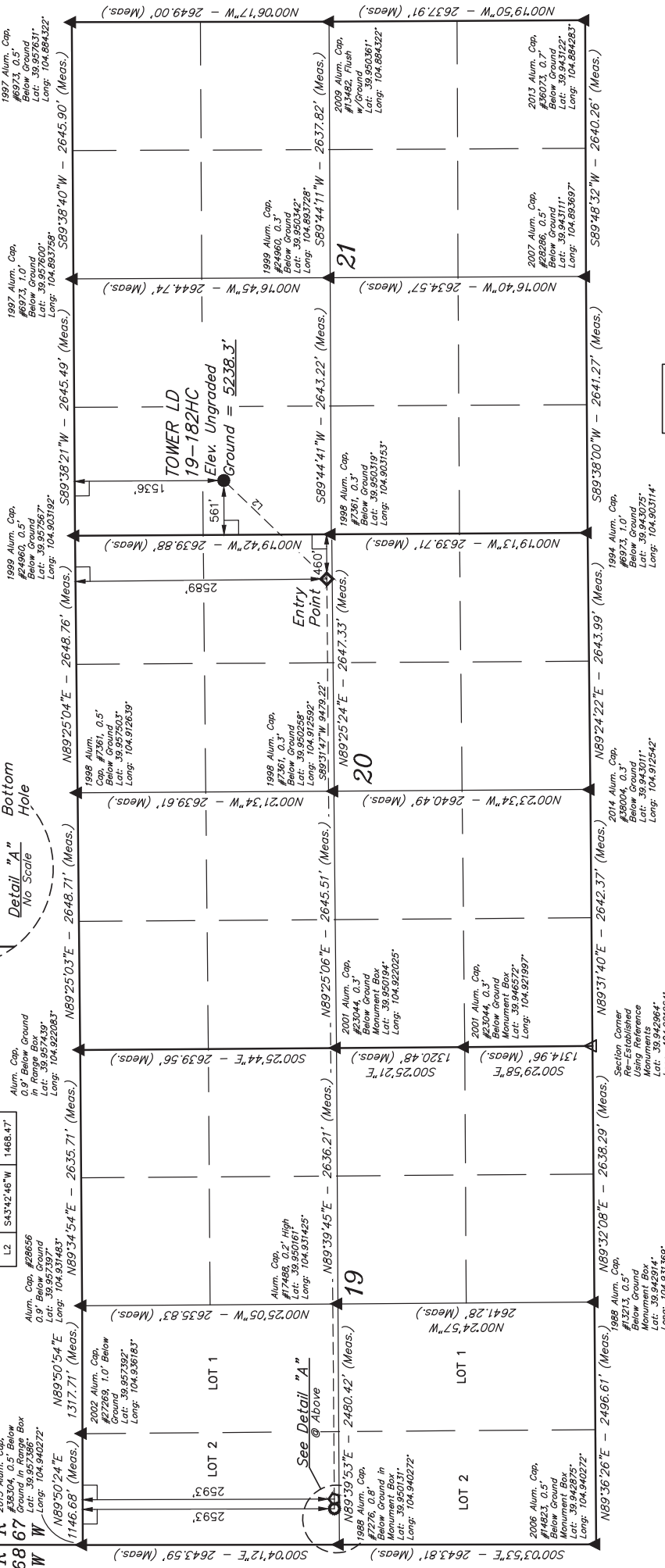


T1S, R67W, 6th P.M. N



LINE TABLE		
LINE	DIRECTION	LENGTH
L1	S89°50'24"W	100.00'
L2	S43°42'46"W	1468.47'



LEGEND:

- 90° SYMBOL
- PROPOSED WELLHEAD
- ENTRY POINT
- BTM PERF.
- TARGET BOTTOM HOLE
- SECTION CORNERS
- SECTION CORNERS
- RE-ESTABLISHED
- (Not Set on Ground)
- (NAD 83)



THIS IS TO CERTIFY THAT THE ABOVE NOTES OF ACTUAL SURVEYS MADE BY ME AND THAT THE SAME ARE TRUE AND KNOWLEDGE AND BELIEF.

RECEIVED LAND SURVEYOR
RECORDS SECTION
STATE OF UTAH
JAN 10 2018

NAD 83 (SURFACE LOCATION)	NAD 83 (ENTRY POINT)
LATITUDE = 39°57'12.09" (39.953338)	LATITUDE = 39°57'01.62" (39.950449)
LONGITUDE = 104°54'04.21" (104.901169)	LONGITUDE = 104°54'17.26" (104.904794)
NAD 27 (SURFACE LOCATION)	NAD 27 (ENTRY POINT)
LATITUDE = 39°57'12.14" (39.953373)	LATITUDE = 39°57'01.67" (39.950465)
LONGITUDE = 104°54'02.29" (104.900637)	LONGITUDE = 104°54'15.34" (104.904562)
NAD 83 (BTM PERF)	NAD 83 (TARGET BOTTOM HOLE)
LATITUDE = 39°57'00.98" (39.950272)	LATITUDE = 39°57'00.98" (39.950271)
LONGITUDE = 104°56'18.94" (104.938955)	LONGITUDE = 104°56'20.23" (104.938952)
NAD 27 (BTM PERF)	NAD 27 (TARGET BOTTOM HOLE)
LATITUDE = 39°57'01.03" (39.950287)	LATITUDE = 39°57'01.03" (39.950287)
LONGITUDE = 104°56'17.02" (104.938962)	LONGITUDE = 104°56'18.31" (104.938418)

PDOP = 1.2

GREAT WESTERN OPERATING COMPANY

TOWER LD 19-182HC
SW 1/4 NW 1/4 SECTION 21, T1S, R67W, 6th P.M.
ADAMS COUNTY, COLORADO

BASIS OF BEARINGS
BASIS OF ELEVATION
BENCHMARK (B) 53 5026 LOCAL ELEVATION IS 7118.88W 408
P.A.L. TAKEN FROM 1988 PUBLISHED DATUM BY THE UNITED STATES DEPARTMENT OF
THE INTERIOR, GEOLOGICAL SURVEY AS BEING 4025 FEET.

REV: 1 7-27-18 B.L.B. NEW SL LOCATIONS ADDED BTM PERF

ENGINEERING & LAND SURVEYING

UELS, LLC
Corporate Office * 85 South 200 East
Vernal, UT 84078 * (435) 789-1017

SURVEYED BY GREG WEIMER, D.D.
DRAWN BY L.C.S.

SCALE
1" = 1000'
11-28-16

WELL LOCATION PLAT