

# **SRC ENERGY**

**WELD COUNTY (NAD83, TRUE NORTH)**

**5N-66W-05 VOLT 19-5 PAD**

**VOLT 14N-3C-L**

**Wellbore #1**

**Plan: Design #1**

## **Standard Planning Report**

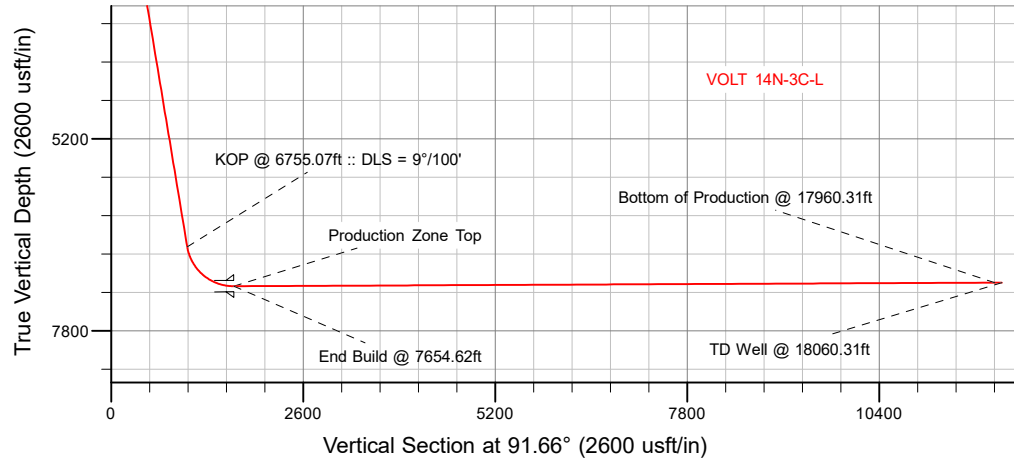
**18 November, 2018**

Project: WELD COUNTY (NAD83, TRUE NORTH)  
Site: 5N-66W-05 VOLT 19-5 PAD  
Well: VOLT 14N-3C-L  
Wellbore: Wellbore #1  
Design: Design #1

# SRC ENERGY

## CASING DETAILS

TVD	MD	Name
1800.00	1818.86	9 5/8"
7197.00	7654.62	Production Zone Top



## SECTION DETAILS

Sec	MD	Inc	Azi	TVD	+N/-S	+E/-W	Dleg	TFace	VSect	Target
1	0.00	0.00	0.00	0.00	0.00	0.00	0.00	0.00	0.00	
2	200.00	0.00	0.00	200.00	0.00	0.00	0.00	0.00	0.00	
3	690.00	9.80	108.00	687.61	-12.92	39.76	2.00	108.00	40.11	
4	6755.07	9.80	108.00	6664.18	-331.93	1021.56	0.00	0.00	1030.75	
5	7654.62	90.27	89.94	7197.00	-359.95	1652.84	9.00	-18.29	1662.57	
6	17960.31	90.27	89.94	7148.00	-349.37	11958.41	0.00	0.00	11963.51	VOLT 14N-3C-L_BPZ
7	18060.31	90.27	89.94	7147.52	-349.27	12058.41	0.00	0.00	12063.47	

## WELLBORE TARGET DETAILS (LAT/LONG)

Name	TVD	+N/-S	+E/-W	Latitude	Longitude
VOLT 14N-3C-L_SHL	0.00	0.00	0.00	40.424563	-104.809089
VOLT 14N-3C-L_BHL	7147.52	-349.27	12058.41	40.423596	-104.765778
VOLT 14N-3C-L_BPZ	7148.00	-349.37	11958.41	40.423596	-104.766137

**SHL**  
1175' FSL  
1107' FWL

**LP**  
805' FSL  
2486' FEL  
40.423575° Lat  
-104.803152° Long

**BPZ**  
832' FSL  
2434' FWL

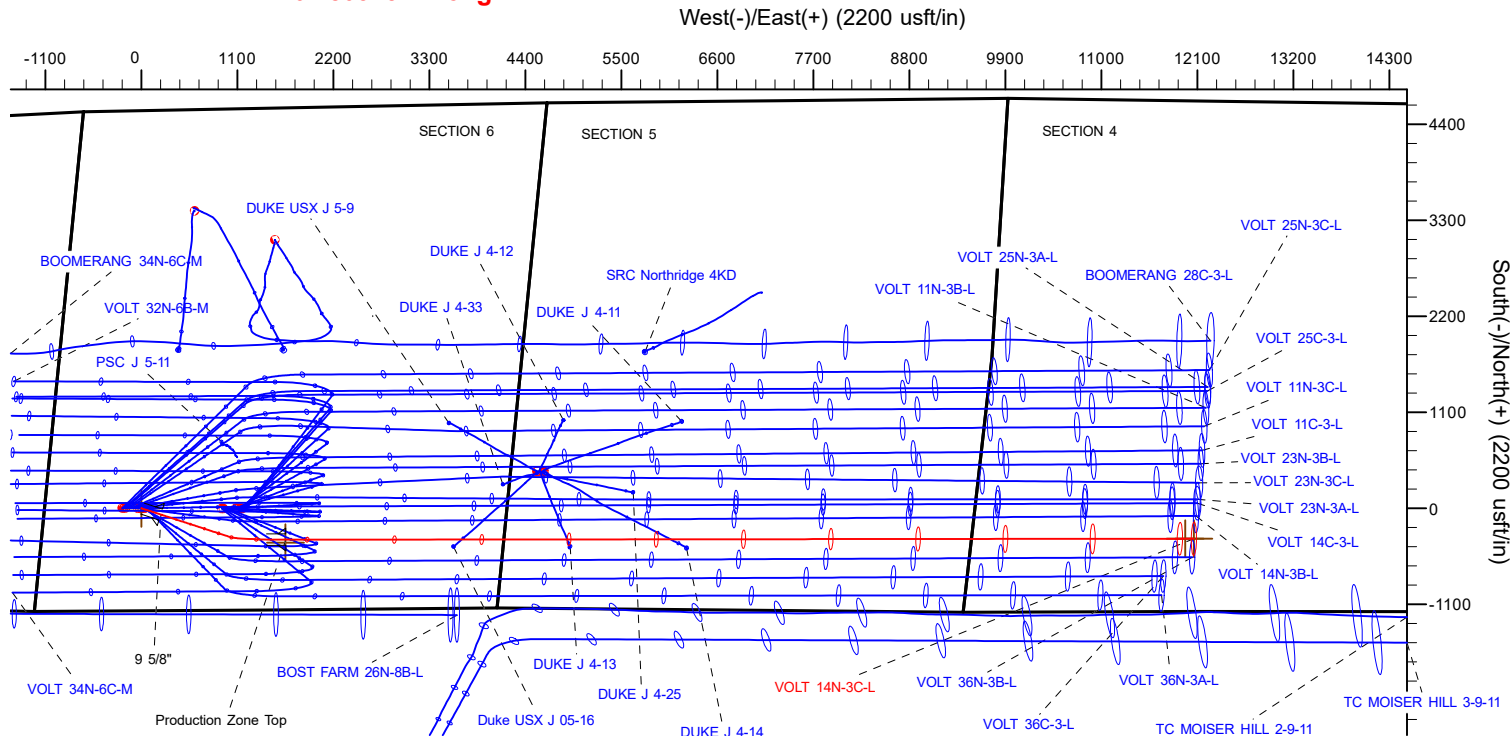
**BHL**  
832' FSL  
2533' FWL

## WELL DETAILS: VOLT 14N-3C-L

GL = 4813'  
RKB = 4' @ 4817.00usft (IKON 12)

Plan: Design #1 (VOLT 14N-3C-L/Wellbore #1)

Date: 11/18/2018



**T** Azimuths to True North  
**M** Magnetic North: 8.09°  
Magnetic Field  
Strength: 52243.3snT  
Dip Angle: 66.83°  
Date: 11/2/2018  
Model: IGRF2015

# Hewlett-Packard

## Planning Report

<b>Database:</b>	EDM 5000.14 Single User Db	<b>Local Co-ordinate Reference:</b>	Well VOLT 14N-3C-L
<b>Company:</b>	SRC ENERGY	<b>TVD Reference:</b>	RKB = 4' @ 4817.00usft (IKON 12)
<b>Project:</b>	WELD COUNTY (NAD83, TRUE NORTH)	<b>MD Reference:</b>	RKB = 4' @ 4817.00usft (IKON 12)
<b>Site:</b>	5N-66W-05 VOLT 19-5 PAD	<b>North Reference:</b>	True
<b>Well:</b>	VOLT 14N-3C-L	<b>Survey Calculation Method:</b>	Minimum Curvature
<b>Wellbore:</b>	Wellbore #1		
<b>Design:</b>	Design #1		

<b>Project</b>	WELD COUNTY (NAD83, TRUE NORTH)		
<b>Map System:</b>	US State Plane 1983	<b>System Datum:</b>	Mean Sea Level
<b>Geo Datum:</b>	North American Datum 1983		
<b>Map Zone:</b>	Colorado Northern Zone		

Site		5N-66W-05 VOLT 19-5 PAD			
Site Position:		Northing:	1,398,257.75 usft	Latitude:	40.424567
From:	Lat/Long	Easting:	3,192,134.26 usft	Longitude:	-104.809879
Position Uncertainty:	0.00 usft	Slot Radius:	13-3/16 "	Grid Convergence:	0.45 °

Well	VOLT 14N-3C-L					
Well Position	+N/-S	-1.46 usft	Northing:	1,398,258.00 usft	Latitude:	40.424563
	+E/-W	219.94 usft	Easting:	3,192,354.20 usft	Longitude:	-104.809089
Position Uncertainty		3.28 usft	Wellhead Elevation:		Ground Level:	4,813.00 usft

<b>Wellbore</b>	Wellbore #1				
<b>Magnetics</b>	<b>Model Name</b>	<b>Sample Date</b>	<b>Declination (°)</b>	<b>Dip Angle (°)</b>	<b>Field Strength (nT)</b>
	IGRF2015	11/2/2018	8.09	66.83	52,243.34761661

<b>Design</b>	Design #1				
<b>Audit Notes:</b>					
<b>Version:</b>		<b>Phase:</b>	PLAN	<b>Tie On Depth:</b>	0.00
<b>Vertical Section:</b>	<b>Depth From (TVD) (usft)</b>	<b>+N/-S (usft)</b>	<b>+E/-W (usft)</b>	<b>Direction (°)</b>	
	0.00	0.00	0.00	91.66	

<b>Plan Survey Tool Program</b>	<b>Date</b>	11/18/2018			
<b>Depth From (usft)</b>	<b>Depth To (usft)</b>	<b>Survey (Wellbore)</b>	<b>Tool Name</b>	<b>Remarks</b>	
1	0.00	1,800.00	Design #1 (Wellbore #1)	SRC Energy_ISCWSA REV 2	
				Fixed:v2:crustal field declinatio	
2	1,800.00	18,060.31	Design #1 (Wellbore #1)	SRC Energy_ISCWSA REV 2	
				Fixed:v2:Rockies, crustal dec +	

# Hewlett-Packard

## Planning Report

<b>Database:</b>	EDM 5000.14 Single User Db	<b>Local Co-ordinate Reference:</b>	Well VOLT 14N-3C-L
<b>Company:</b>	SRC ENERGY	<b>TVD Reference:</b>	RKB = 4' @ 4817.00usft (IKON 12)
<b>Project:</b>	WELD COUNTY (NAD83, TRUE NORTH)	<b>MD Reference:</b>	RKB = 4' @ 4817.00usft (IKON 12)
<b>Site:</b>	5N-66W-05 VOLT 19-5 PAD	<b>North Reference:</b>	True
<b>Well:</b>	VOLT 14N-3C-L	<b>Survey Calculation Method:</b>	Minimum Curvature
<b>Wellbore:</b>	Wellbore #1		
<b>Design:</b>	Design #1		

Plan Sections										
Measured Depth (usft)	Inclination (°)	Azimuth (°)	Vertical Depth (usft)	+N/-S (usft)	+E/-W (usft)	Dogleg Rate (°/100usft)	Build Rate (°/100usft)	Turn Rate (°/100usft)	TFO (°)	Target
0.00	0.00	0.00	0.00	0.00	0.00	0.00	0.00	0.00	0.00	
200.00	0.00	0.00	200.00	0.00	0.00	0.00	0.00	0.00	0.00	
690.00	9.80	108.00	687.61	-12.92	39.76	2.00	2.00	0.00	108.00	
6,755.07	9.80	108.00	6,664.18	-331.93	1,021.56	0.00	0.00	0.00	0.00	
7,654.62	90.27	89.94	7,197.00	-359.95	1,652.84	9.00	8.95	-2.01	-18.29	
17,960.31	90.27	89.94	7,148.00	-349.37	11,958.41	0.00	0.00	0.00	0.00	VOLT 14N-3C-L_BPZ
18,060.31	90.27	89.94	7,147.52	-349.27	12,058.41	0.00	0.00	0.00	0.00	

# Hewlett-Packard

## Planning Report

<b>Database:</b>	EDM 5000.14 Single User Db	<b>Local Co-ordinate Reference:</b>	Well VOLT 14N-3C-L
<b>Company:</b>	SRC ENERGY	<b>TVD Reference:</b>	RKB = 4' @ 4817.00usft (IKON 12)
<b>Project:</b>	WELD COUNTY (NAD83, TRUE NORTH)	<b>MD Reference:</b>	RKB = 4' @ 4817.00usft (IKON 12)
<b>Site:</b>	5N-66W-05 VOLT 19-5 PAD	<b>North Reference:</b>	True
<b>Well:</b>	VOLT 14N-3C-L	<b>Survey Calculation Method:</b>	Minimum Curvature
<b>Wellbore:</b>	Wellbore #1		
<b>Design:</b>	Design #1		

Planned Survey									
Measured Depth (usft)	Inclination (°)	Azimuth (°)	Vertical Depth (usft)	+N/-S (usft)	+E/-W (usft)	Vertical Section (usft)	Dogleg Rate (°/100usft)	Build Rate (°/100usft)	Turn Rate (°/100usft)
0.00	0.00	0.00	0.00	0.00	0.00	0.00	0.00	0.00	0.00
100.00	0.00	0.00	100.00	0.00	0.00	0.00	0.00	0.00	0.00
200.00	0.00	0.00	200.00	0.00	0.00	0.00	0.00	0.00	0.00
Begin Nudge @ 200.00ft									
300.00	2.00	108.00	299.98	-0.54	1.66	1.67	2.00	2.00	0.00
400.00	4.00	108.00	399.84	-2.16	6.64	6.70	2.00	2.00	0.00
500.00	6.00	108.00	499.45	-4.85	14.93	15.06	2.00	2.00	0.00
600.00	8.00	108.00	598.70	-8.62	26.52	26.75	2.00	2.00	0.00
690.00	9.80	108.00	687.61	-12.92	39.76	40.11	2.00	2.00	0.00
Hold Tangent @ 690.00ft									
700.00	9.80	108.00	697.47	-13.44	41.38	41.75	0.00	0.00	0.00
800.00	9.80	108.00	796.01	-18.70	57.56	58.08	0.00	0.00	0.00
900.00	9.80	108.00	894.55	-23.96	73.75	74.41	0.00	0.00	0.00
1,000.00	9.80	108.00	993.09	-29.22	89.94	90.75	0.00	0.00	0.00
1,100.00	9.80	108.00	1,091.63	-34.48	106.13	107.08	0.00	0.00	0.00
1,200.00	9.80	108.00	1,190.17	-39.74	122.32	123.41	0.00	0.00	0.00
1,300.00	9.80	108.00	1,288.71	-45.00	138.50	139.75	0.00	0.00	0.00
1,400.00	9.80	108.00	1,387.25	-50.26	154.69	156.08	0.00	0.00	0.00
1,500.00	9.80	108.00	1,485.79	-55.52	170.88	172.42	0.00	0.00	0.00
1,600.00	9.80	108.00	1,584.34	-60.78	187.07	188.75	0.00	0.00	0.00
1,700.00	9.80	108.00	1,682.88	-66.04	203.25	205.08	0.00	0.00	0.00
1,800.00	9.80	108.00	1,781.42	-71.30	219.44	221.42	0.00	0.00	0.00
1,818.86	9.80	108.00	1,800.00	-72.29	222.50	224.50	0.00	0.00	0.00
9 5/8"									
1,900.00	9.80	108.00	1,879.96	-76.56	235.63	237.75	0.00	0.00	0.00
2,000.00	9.80	108.00	1,978.50	-81.82	251.82	254.08	0.00	0.00	0.00
2,100.00	9.80	108.00	2,077.04	-87.08	268.01	270.42	0.00	0.00	0.00
2,200.00	9.80	108.00	2,175.58	-92.34	284.19	286.75	0.00	0.00	0.00
2,300.00	9.80	108.00	2,274.12	-97.60	300.38	303.08	0.00	0.00	0.00
2,400.00	9.80	108.00	2,372.66	-102.86	316.57	319.42	0.00	0.00	0.00
2,500.00	9.80	108.00	2,471.20	-108.12	332.76	335.75	0.00	0.00	0.00
2,600.00	9.80	108.00	2,569.74	-113.38	348.95	352.08	0.00	0.00	0.00
2,700.00	9.80	108.00	2,668.28	-118.64	365.13	368.42	0.00	0.00	0.00
2,800.00	9.80	108.00	2,766.83	-123.90	381.32	384.75	0.00	0.00	0.00
2,900.00	9.80	108.00	2,865.37	-129.16	397.51	401.08	0.00	0.00	0.00
3,000.00	9.80	108.00	2,963.91	-134.42	413.70	417.42	0.00	0.00	0.00
3,100.00	9.80	108.00	3,062.45	-139.68	429.89	433.75	0.00	0.00	0.00
3,200.00	9.80	108.00	3,160.99	-144.94	446.07	450.08	0.00	0.00	0.00
3,300.00	9.80	108.00	3,259.53	-150.20	462.26	466.42	0.00	0.00	0.00
3,400.00	9.80	108.00	3,358.07	-155.46	478.45	482.75	0.00	0.00	0.00
3,500.00	9.80	108.00	3,456.61	-160.72	494.64	499.08	0.00	0.00	0.00
3,600.00	9.80	108.00	3,555.15	-165.98	510.82	515.42	0.00	0.00	0.00
3,700.00	9.80	108.00	3,653.69	-171.24	527.01	531.75	0.00	0.00	0.00
3,800.00	9.80	108.00	3,752.23	-176.50	543.20	548.08	0.00	0.00	0.00
3,900.00	9.80	108.00	3,850.77	-181.76	559.39	564.42	0.00	0.00	0.00
4,000.00	9.80	108.00	3,949.31	-187.02	575.58	580.75	0.00	0.00	0.00
4,100.00	9.80	108.00	4,047.86	-192.28	591.76	597.08	0.00	0.00	0.00
4,200.00	9.80	108.00	4,146.40	-197.54	607.95	613.42	0.00	0.00	0.00
4,300.00	9.80	108.00	4,244.94	-202.80	624.14	629.75	0.00	0.00	0.00
4,400.00	9.80	108.00	4,343.48	-208.06	640.33	646.08	0.00	0.00	0.00
4,500.00	9.80	108.00	4,442.02	-213.31	656.52	662.42	0.00	0.00	0.00
4,600.00	9.80	108.00	4,540.56	-218.57	672.70	678.75	0.00	0.00	0.00
4,700.00	9.80	108.00	4,639.10	-223.83	688.89	695.08	0.00	0.00	0.00

# Hewlett-Packard

## Planning Report

<b>Database:</b>	EDM 5000.14 Single User Db	<b>Local Co-ordinate Reference:</b>	Well VOLT 14N-3C-L
<b>Company:</b>	SRC ENERGY	<b>TVD Reference:</b>	RKB = 4' @ 4817.00usft (IKON 12)
<b>Project:</b>	WELD COUNTY (NAD83, TRUE NORTH)	<b>MD Reference:</b>	RKB = 4' @ 4817.00usft (IKON 12)
<b>Site:</b>	5N-66W-05 VOLT 19-5 PAD	<b>North Reference:</b>	True
<b>Well:</b>	VOLT 14N-3C-L	<b>Survey Calculation Method:</b>	Minimum Curvature
<b>Wellbore:</b>	Wellbore #1		
<b>Design:</b>	Design #1		

Planned Survey									
Measured Depth (usft)	Inclination (°)	Azimuth (°)	Vertical Depth (usft)	+N/-S (usft)	+E/-W (usft)	Vertical Section (usft)	Dogleg Rate (°/100usft)	Build Rate (°/100usft)	Turn Rate (°/100usft)
4,800.00	9.80	108.00	4,737.64	-229.09	705.08	711.42	0.00	0.00	0.00
4,900.00	9.80	108.00	4,836.18	-234.35	721.27	727.75	0.00	0.00	0.00
5,000.00	9.80	108.00	4,934.72	-239.61	737.46	744.08	0.00	0.00	0.00
5,100.00	9.80	108.00	5,033.26	-244.87	753.64	760.42	0.00	0.00	0.00
5,200.00	9.80	108.00	5,131.80	-250.13	769.83	776.75	0.00	0.00	0.00
5,300.00	9.80	108.00	5,230.34	-255.39	786.02	793.08	0.00	0.00	0.00
5,400.00	9.80	108.00	5,328.89	-260.65	802.21	809.42	0.00	0.00	0.00
5,500.00	9.80	108.00	5,427.43	-265.91	818.39	825.75	0.00	0.00	0.00
5,600.00	9.80	108.00	5,525.97	-271.17	834.58	842.08	0.00	0.00	0.00
5,700.00	9.80	108.00	5,624.51	-276.43	850.77	858.42	0.00	0.00	0.00
5,800.00	9.80	108.00	5,723.05	-281.69	866.96	874.75	0.00	0.00	0.00
5,900.00	9.80	108.00	5,821.59	-286.95	883.15	891.08	0.00	0.00	0.00
6,000.00	9.80	108.00	5,920.13	-292.21	899.33	907.42	0.00	0.00	0.00
6,100.00	9.80	108.00	6,018.67	-297.47	915.52	923.75	0.00	0.00	0.00
6,200.00	9.80	108.00	6,117.21	-302.73	931.71	940.08	0.00	0.00	0.00
6,300.00	9.80	108.00	6,215.75	-307.99	947.90	956.42	0.00	0.00	0.00
6,400.00	9.80	108.00	6,314.29	-313.25	964.09	972.75	0.00	0.00	0.00
6,500.00	9.80	108.00	6,412.83	-318.51	980.27	989.08	0.00	0.00	0.00
6,600.00	9.80	108.00	6,511.38	-323.77	996.46	1,005.42	0.00	0.00	0.00
6,700.00	9.80	108.00	6,609.92	-329.03	1,012.65	1,021.75	0.00	0.00	0.00
6,755.07	9.80	108.00	6,664.18	-331.93	1,021.56	1,030.75	0.00	0.00	0.00
<b>KOP @ 6755.07ft :: DLS = 9°/100'</b>									
6,800.00	13.70	102.64	6,708.16	-334.27	1,030.39	1,039.64	9.00	8.68	-11.94
6,900.00	22.56	97.36	6,803.11	-339.33	1,061.03	1,070.41	9.00	8.86	-5.28
7,000.00	31.49	94.97	6,892.11	-344.06	1,106.17	1,115.66	9.00	8.94	-2.39
7,100.00	40.45	93.55	6,972.96	-348.34	1,164.69	1,174.28	9.00	8.96	-1.41
7,200.00	49.43	92.58	7,043.67	-352.07	1,235.15	1,244.83	9.00	8.97	-0.97
7,300.00	58.41	91.84	7,102.50	-355.15	1,315.83	1,325.56	9.00	8.98	-0.74
7,400.00	67.39	91.23	7,148.01	-357.52	1,404.72	1,414.49	9.00	8.98	-0.61
7,500.00	76.38	90.70	7,179.07	-359.11	1,499.66	1,509.42	9.00	8.99	-0.53
7,600.00	85.36	90.20	7,194.92	-359.88	1,598.28	1,608.03	9.00	8.99	-0.49
7,654.62	90.27	89.94	7,197.00	-359.95	1,652.85	1,662.58	9.00	8.99	-0.48
<b>End Build @ 7654.62ft - Production Zone Top</b>									
7,700.00	90.27	89.94	7,196.79	-359.90	1,698.23	1,707.94	0.00	0.00	0.00
7,800.00	90.27	89.94	7,196.31	-359.80	1,798.23	1,807.89	0.00	0.00	0.00
7,900.00	90.27	89.94	7,195.84	-359.69	1,898.22	1,907.84	0.00	0.00	0.00
8,000.00	90.27	89.94	7,195.36	-359.59	1,998.22	2,007.80	0.00	0.00	0.00
8,100.00	90.27	89.94	7,194.89	-359.49	2,098.22	2,107.75	0.00	0.00	0.00
8,200.00	90.27	89.94	7,194.41	-359.39	2,198.22	2,207.70	0.00	0.00	0.00
8,300.00	90.27	89.94	7,193.93	-359.28	2,298.22	2,307.66	0.00	0.00	0.00
8,400.00	90.27	89.94	7,193.46	-359.18	2,398.22	2,407.61	0.00	0.00	0.00
8,500.00	90.27	89.94	7,192.98	-359.08	2,498.22	2,507.57	0.00	0.00	0.00
8,600.00	90.27	89.94	7,192.51	-358.98	2,598.22	2,607.52	0.00	0.00	0.00
8,700.00	90.27	89.94	7,192.03	-358.87	2,698.22	2,707.47	0.00	0.00	0.00
8,800.00	90.27	89.94	7,191.56	-358.77	2,798.21	2,807.43	0.00	0.00	0.00
8,900.00	90.27	89.94	7,191.08	-358.67	2,898.21	2,907.38	0.00	0.00	0.00
9,000.00	90.27	89.94	7,190.61	-358.57	2,998.21	3,007.34	0.00	0.00	0.00
9,100.00	90.27	89.94	7,190.13	-358.46	3,098.21	3,107.29	0.00	0.00	0.00
9,200.00	90.27	89.94	7,189.66	-358.36	3,198.21	3,207.24	0.00	0.00	0.00
9,300.00	90.27	89.94	7,189.18	-358.26	3,298.21	3,307.20	0.00	0.00	0.00
9,400.00	90.27	89.94	7,188.70	-358.16	3,398.21	3,407.15	0.00	0.00	0.00
9,500.00	90.27	89.94	7,188.23	-358.05	3,498.21	3,507.11	0.00	0.00	0.00
9,600.00	90.27	89.94	7,187.75	-357.95	3,598.20	3,607.06	0.00	0.00	0.00
9,700.00	90.27	89.94	7,187.28	-357.85	3,698.20	3,707.01	0.00	0.00	0.00

# Hewlett-Packard

## Planning Report

<b>Database:</b>	EDM 5000.14 Single User Db	<b>Local Co-ordinate Reference:</b>	Well VOLT 14N-3C-L
<b>Company:</b>	SRC ENERGY	<b>TVD Reference:</b>	RKB = 4' @ 4817.00usft (IKON 12)
<b>Project:</b>	WELD COUNTY (NAD83, TRUE NORTH)	<b>MD Reference:</b>	RKB = 4' @ 4817.00usft (IKON 12)
<b>Site:</b>	5N-66W-05 VOLT 19-5 PAD	<b>North Reference:</b>	True
<b>Well:</b>	VOLT 14N-3C-L	<b>Survey Calculation Method:</b>	Minimum Curvature
<b>Wellbore:</b>	Wellbore #1		
<b>Design:</b>	Design #1		

Planned Survey										
Measured Depth (usft)	Inclination (°)	Azimuth (°)	Vertical Depth (usft)	+N/-S (usft)	+E/-W (usft)	Vertical Section (usft)	Dogleg Rate (°/100usft)	Build Rate (°/100usft)	Turn Rate (°/100usft)	
9,800.00	90.27	89.94	7,186.80	-357.75	3,798.20	3,806.97	0.00	0.00	0.00	
9,900.00	90.27	89.94	7,186.33	-357.64	3,898.20	3,906.92	0.00	0.00	0.00	
10,000.00	90.27	89.94	7,185.85	-357.54	3,998.20	4,006.88	0.00	0.00	0.00	
10,100.00	90.27	89.94	7,185.38	-357.44	4,098.20	4,106.83	0.00	0.00	0.00	
10,200.00	90.27	89.94	7,184.90	-357.34	4,198.20	4,206.78	0.00	0.00	0.00	
10,300.00	90.27	89.94	7,184.42	-357.23	4,298.20	4,306.74	0.00	0.00	0.00	
10,400.00	90.27	89.94	7,183.95	-357.13	4,398.20	4,406.69	0.00	0.00	0.00	
10,500.00	90.27	89.94	7,183.47	-357.03	4,498.19	4,506.65	0.00	0.00	0.00	
10,600.00	90.27	89.94	7,183.00	-356.92	4,598.19	4,606.60	0.00	0.00	0.00	
10,700.00	90.27	89.94	7,182.52	-356.82	4,698.19	4,706.55	0.00	0.00	0.00	
10,800.00	90.27	89.94	7,182.05	-356.72	4,798.19	4,806.51	0.00	0.00	0.00	
10,900.00	90.27	89.94	7,181.57	-356.62	4,898.19	4,906.46	0.00	0.00	0.00	
11,000.00	90.27	89.94	7,181.10	-356.51	4,998.19	5,006.41	0.00	0.00	0.00	
11,100.00	90.27	89.94	7,180.62	-356.41	5,098.19	5,106.37	0.00	0.00	0.00	
11,200.00	90.27	89.94	7,180.15	-356.31	5,198.19	5,206.32	0.00	0.00	0.00	
11,300.00	90.27	89.94	7,179.67	-356.21	5,298.18	5,306.28	0.00	0.00	0.00	
11,400.00	90.27	89.94	7,179.19	-356.10	5,398.18	5,406.23	0.00	0.00	0.00	
11,500.00	90.27	89.94	7,178.72	-356.00	5,498.18	5,506.18	0.00	0.00	0.00	
11,600.00	90.27	89.94	7,178.24	-355.90	5,598.18	5,606.14	0.00	0.00	0.00	
11,700.00	90.27	89.94	7,177.77	-355.80	5,698.18	5,706.09	0.00	0.00	0.00	
11,800.00	90.27	89.94	7,177.29	-355.69	5,798.18	5,806.05	0.00	0.00	0.00	
11,900.00	90.27	89.94	7,176.82	-355.59	5,898.18	5,906.00	0.00	0.00	0.00	
12,000.00	90.27	89.94	7,176.34	-355.49	5,998.18	6,005.95	0.00	0.00	0.00	
12,100.00	90.27	89.94	7,175.87	-355.39	6,098.18	6,105.91	0.00	0.00	0.00	
12,200.00	90.27	89.94	7,175.39	-355.28	6,198.17	6,205.86	0.00	0.00	0.00	
12,300.00	90.27	89.94	7,174.91	-355.18	6,298.17	6,305.82	0.00	0.00	0.00	
12,400.00	90.27	89.94	7,174.44	-355.08	6,398.17	6,405.77	0.00	0.00	0.00	
12,500.00	90.27	89.94	7,173.96	-354.98	6,498.17	6,505.72	0.00	0.00	0.00	
12,600.00	90.27	89.94	7,173.49	-354.87	6,598.17	6,605.68	0.00	0.00	0.00	
12,700.00	90.27	89.94	7,173.01	-354.77	6,698.17	6,705.63	0.00	0.00	0.00	
12,800.00	90.27	89.94	7,172.54	-354.67	6,798.17	6,805.59	0.00	0.00	0.00	
12,900.00	90.27	89.94	7,172.06	-354.56	6,898.17	6,905.54	0.00	0.00	0.00	
13,000.00	90.27	89.94	7,171.59	-354.46	6,998.16	7,005.49	0.00	0.00	0.00	
13,100.00	90.27	89.94	7,171.11	-354.36	7,098.16	7,105.45	0.00	0.00	0.00	
13,200.00	90.27	89.94	7,170.64	-354.26	7,198.16	7,205.40	0.00	0.00	0.00	
13,300.00	90.27	89.94	7,170.16	-354.15	7,298.16	7,305.36	0.00	0.00	0.00	
13,400.00	90.27	89.94	7,169.68	-354.05	7,398.16	7,405.31	0.00	0.00	0.00	
13,500.00	90.27	89.94	7,169.21	-353.95	7,498.16	7,505.26	0.00	0.00	0.00	
13,600.00	90.27	89.94	7,168.73	-353.85	7,598.16	7,605.22	0.00	0.00	0.00	
13,700.00	90.27	89.94	7,168.26	-353.74	7,698.16	7,705.17	0.00	0.00	0.00	
13,800.00	90.27	89.94	7,167.78	-353.64	7,798.16	7,805.12	0.00	0.00	0.00	
13,900.00	90.27	89.94	7,167.31	-353.54	7,898.15	7,905.08	0.00	0.00	0.00	
14,000.00	90.27	89.94	7,166.83	-353.44	7,998.15	8,005.03	0.00	0.00	0.00	
14,100.00	90.27	89.94	7,166.36	-353.33	8,098.15	8,104.99	0.00	0.00	0.00	
14,200.00	90.27	89.94	7,165.88	-353.23	8,198.15	8,204.94	0.00	0.00	0.00	
14,300.00	90.27	89.94	7,165.40	-353.13	8,298.15	8,304.89	0.00	0.00	0.00	
14,400.00	90.27	89.94	7,164.93	-353.03	8,398.15	8,404.85	0.00	0.00	0.00	
14,500.00	90.27	89.94	7,164.45	-352.92	8,498.15	8,504.80	0.00	0.00	0.00	
14,600.00	90.27	89.94	7,163.98	-352.82	8,598.15	8,604.76	0.00	0.00	0.00	
14,700.00	90.27	89.94	7,163.50	-352.72	8,698.14	8,704.71	0.00	0.00	0.00	
14,800.00	90.27	89.94	7,163.03	-352.62	8,798.14	8,804.66	0.00	0.00	0.00	
14,900.00	90.27	89.94	7,162.55	-352.51	8,898.14	8,904.62	0.00	0.00	0.00	
15,000.00	90.27	89.94	7,162.08	-352.41	8,998.14	9,004.57	0.00	0.00	0.00	
15,100.00	90.27	89.94	7,161.60	-352.31	9,098.14	9,104.53	0.00	0.00	0.00	

# Hewlett-Packard

## Planning Report

<b>Database:</b>	EDM 5000.14 Single User Db	<b>Local Co-ordinate Reference:</b>	Well VOLT 14N-3C-L
<b>Company:</b>	SRC ENERGY	<b>TVD Reference:</b>	RKB = 4' @ 4817.00usft (IKON 12)
<b>Project:</b>	WELD COUNTY (NAD83, TRUE NORTH)	<b>MD Reference:</b>	RKB = 4' @ 4817.00usft (IKON 12)
<b>Site:</b>	5N-66W-05 VOLT 19-5 PAD	<b>North Reference:</b>	True
<b>Well:</b>	VOLT 14N-3C-L	<b>Survey Calculation Method:</b>	Minimum Curvature
<b>Wellbore:</b>	Wellbore #1		
<b>Design:</b>	Design #1		

Planned Survey									
Measured Depth (usft)	Inclination (°)	Azimuth (°)	Vertical Depth (usft)	+N/-S (usft)	+E/-W (usft)	Vertical Section (usft)	Dogleg Rate (°/100usft)	Build Rate (°/100usft)	Turn Rate (°/100usft)
15,200.00	90.27	89.94	7,161.13	-352.20	9,198.14	9,204.48	0.00	0.00	0.00
15,300.00	90.27	89.94	7,160.65	-352.10	9,298.14	9,304.43	0.00	0.00	0.00
15,400.00	90.27	89.94	7,160.17	-352.00	9,398.14	9,404.39	0.00	0.00	0.00
15,500.00	90.27	89.94	7,159.70	-351.90	9,498.13	9,504.34	0.00	0.00	0.00
15,600.00	90.27	89.94	7,159.22	-351.79	9,598.13	9,604.30	0.00	0.00	0.00
15,700.00	90.27	89.94	7,158.75	-351.69	9,698.13	9,704.25	0.00	0.00	0.00
15,800.00	90.27	89.94	7,158.27	-351.59	9,798.13	9,804.20	0.00	0.00	0.00
15,900.00	90.27	89.94	7,157.80	-351.49	9,898.13	9,904.16	0.00	0.00	0.00
16,000.00	90.27	89.94	7,157.32	-351.38	9,998.13	10,004.11	0.00	0.00	0.00
16,100.00	90.27	89.94	7,156.85	-351.28	10,098.13	10,104.07	0.00	0.00	0.00
16,200.00	90.27	89.94	7,156.37	-351.18	10,198.13	10,204.02	0.00	0.00	0.00
16,300.00	90.27	89.94	7,155.89	-351.08	10,298.13	10,303.97	0.00	0.00	0.00
16,400.00	90.27	89.94	7,155.42	-350.97	10,398.12	10,403.93	0.00	0.00	0.00
16,500.00	90.27	89.94	7,154.94	-350.87	10,498.12	10,503.88	0.00	0.00	0.00
16,600.00	90.27	89.94	7,154.47	-350.77	10,598.12	10,603.83	0.00	0.00	0.00
16,700.00	90.27	89.94	7,153.99	-350.67	10,698.12	10,703.79	0.00	0.00	0.00
16,800.00	90.27	89.94	7,153.52	-350.56	10,798.12	10,803.74	0.00	0.00	0.00
16,900.00	90.27	89.94	7,153.04	-350.46	10,898.12	10,903.70	0.00	0.00	0.00
17,000.00	90.27	89.94	7,152.57	-350.36	10,998.12	11,003.65	0.00	0.00	0.00
17,100.00	90.27	89.94	7,152.09	-350.26	11,098.12	11,103.60	0.00	0.00	0.00
17,200.00	90.27	89.94	7,151.62	-350.15	11,198.11	11,203.56	0.00	0.00	0.00
17,300.00	90.27	89.94	7,151.14	-350.05	11,298.11	11,303.51	0.00	0.00	0.00
17,400.00	90.27	89.94	7,150.66	-349.95	11,398.11	11,403.47	0.00	0.00	0.00
17,500.00	90.27	89.94	7,150.19	-349.84	11,498.11	11,503.42	0.00	0.00	0.00
17,600.00	90.27	89.94	7,149.71	-349.74	11,598.11	11,603.37	0.00	0.00	0.00
17,700.00	90.27	89.94	7,149.24	-349.64	11,698.11	11,703.33	0.00	0.00	0.00
17,800.00	90.27	89.94	7,148.76	-349.54	11,798.11	11,803.28	0.00	0.00	0.00
17,900.00	90.27	89.94	7,148.29	-349.43	11,898.11	11,903.24	0.00	0.00	0.00
17,960.31	90.27	89.94	7,148.00	-349.37	11,958.41	11,963.52	0.00	0.00	0.00
Bottom of Production @ 17960.31ft									
18,000.00	90.27	89.94	7,147.81	-349.33	11,998.11	12,003.19	0.00	0.00	0.00
18,060.31	90.27	89.94	7,147.52	-349.27	12,058.41	12,063.47	0.00	0.00	0.00
TD Well @ 18060.31ft									

Casing Points					
Measured Depth (usft)	Vertical Depth (usft)	Name	Casing Diameter (")	Hole Diameter (")	
1,818.86	1,800.00	9 5/8"	9-5/8	13-1/2	
7,654.62	7,197.00	Production Zone Top	5-1/2	8-1/2	



# Hewlett-Packard

## Planning Report

<b>Database:</b>	EDM 5000.14 Single User Db	<b>Local Co-ordinate Reference:</b>	Well VOLT 14N-3C-L
<b>Company:</b>	SRC ENERGY	<b>TVD Reference:</b>	RKB = 4' @ 4817.00usft (IKON 12)
<b>Project:</b>	WELD COUNTY (NAD83, TRUE NORTH)	<b>MD Reference:</b>	RKB = 4' @ 4817.00usft (IKON 12)
<b>Site:</b>	5N-66W-05 VOLT 19-5 PAD	<b>North Reference:</b>	True
<b>Well:</b>	VOLT 14N-3C-L	<b>Survey Calculation Method:</b>	Minimum Curvature
<b>Wellbore:</b>	Wellbore #1		
<b>Design:</b>	Design #1		

Plan Annotations				
Measured Depth (usft)	Vertical Depth (usft)	Local Coordinates		Comment
		+N/-S (usft)	+E/-W (usft)	
200.00	200.00	0.00	0.00	Begin Nudge @ 200.00ft
690.00	687.61	-12.92	39.76	Hold Tangent @ 690.00ft
6,755.07	6,664.18	-331.93	1,021.56	KOP @ 6755.07ft :: DLS = 9°/100'
7,654.62	7,197.00	-359.95	1,652.84	End Build @ 7654.62ft
17,960.31	7,148.00	-349.37	11,958.41	Bottom of Production @ 17960.31ft
18,060.31	7,147.52	-349.27	12,058.41	TD Well @ 18060.31ft