

Feb-13-2019
EMM-2015 [2000.0-2020.0] Dip: 66.26 deg Field: 51918.8 nT
Lat: N39 57 12.0780 Long: W104 54 6.9048 Elev: 5239.60 ft
Magnetic North is 8.14 deg East of TRUE North
To correct azimuth from Magnetic to TRUE add 8.14 deg

Great Western Operating Company, LLC

Location	Colorado	Slot	N10 - Tower LD 19-139HN
Field	Wattenburg	Well	Tower LD 19-139HN
Installation	Tower	Wellbore	Tower LD 19-139HN (PWB)

Created by	admin
Date plotted	15-Feb-2019
Plot reference is Tower LD 19-139HN (PWB).	
Ref wellpath is Tower LD 19-139HN (PWP#1).	
Coordinates are in Feet reference N10 - Tower LD 19-139HN.	
True Vertical Depths are reference Rig Datum.	
Measured Depths are reference Rig Datum.	
Rig Datum: Planned Datum #1	
Rig Datum to Mean Sea Level: 5259.60 ft.	
Plot North is aligned to TRUE North.	

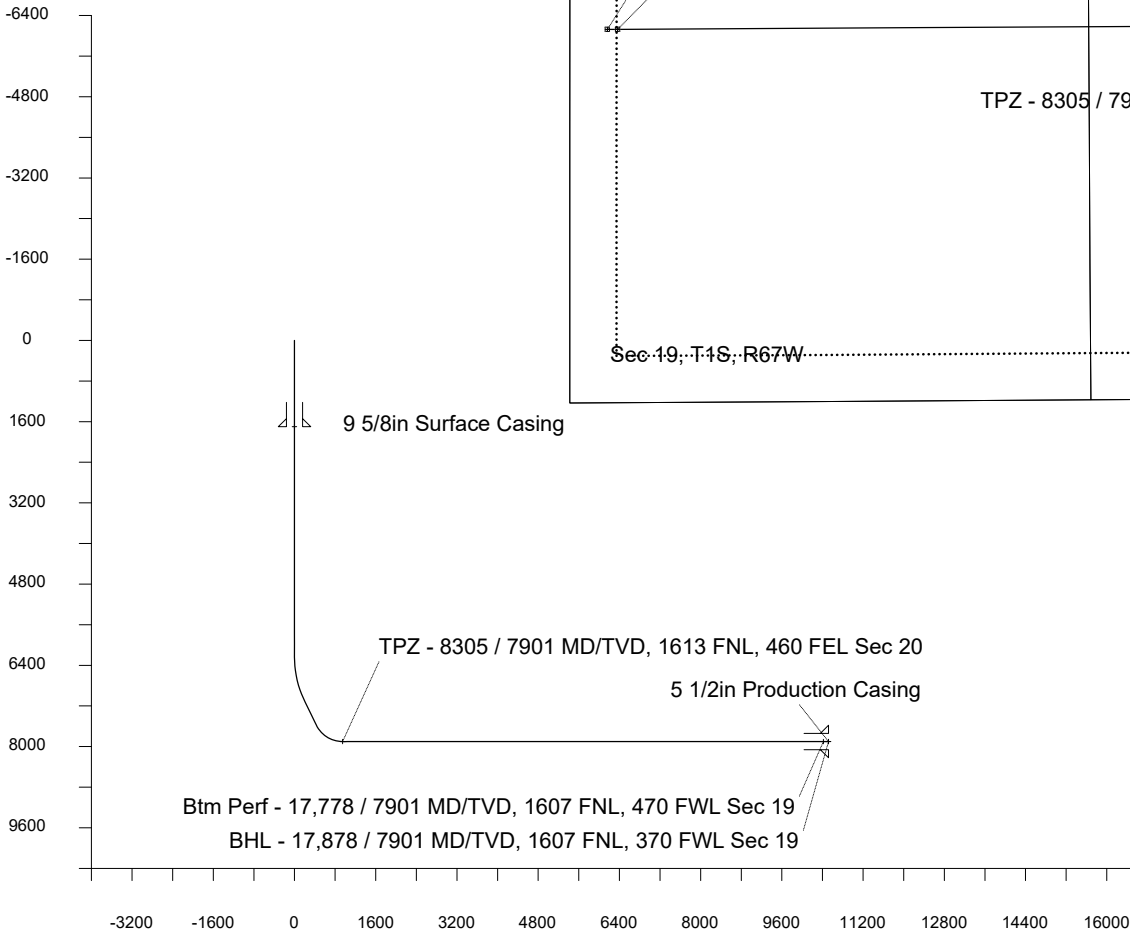
Scale 1 cm = 400 ft

East (Feet) ->

-12000 -11200 -10400 -9600 -8800 -8000 -7200 -6400 -5600 -4800 -4000 -3200 -2400 -1600 -800 0 800 1600

Scale 1 cm = 800 ft

<- True Vertical Depth (Feet)



Scale 1 cm = 800 ft

Vertical Section (Feet) ->

Azimuth 269.26 with reference 0.00 N, 0.00 E from N10 - Tower LD 19-139HN

<- North(Feet)

Scale 1 cm = 400 ft

WELL PROFILE DATA								
Point	MD	Inc	Azi	TVD	North	East	deg/100ft	V. Sect
Tie on	0.00	0.00	0.00	0.00	S 0.00	W 0.00		-0.00
KOP	6250.00	0.00	262.09	6250.00	S 0.00	W 0.00	0.00	-0.00
End of Build	7119.14	26.07	262.09	7089.45	S 26.75	W 192.52	3.00	192.85
End of Hold	7663.43	26.07	262.09	7578.34	S 59.68	W 429.48	0.00	430.22
Target TPZ - ...Sec 20	8305.14	90.00	269.68	7901.00	S 83.40	W 945.08	10.00	946.08
Target Btm Pe...Sec 19	17777.67	90.00	269.68	7901.00	S 135.88	W 10417.46	0.00	10418.34
End of Turn	17779.00	90.00	269.82	7901.00	S 135.89	W 10418.79	10.00	10419.68
T.D. & Target BHL... 19	17877.75	90.00	269.82	7901.00	S 136.20	W 10517.54	0.00	10518.42