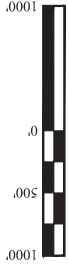
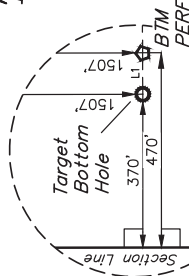


T1S, R67W, 6th P.M.

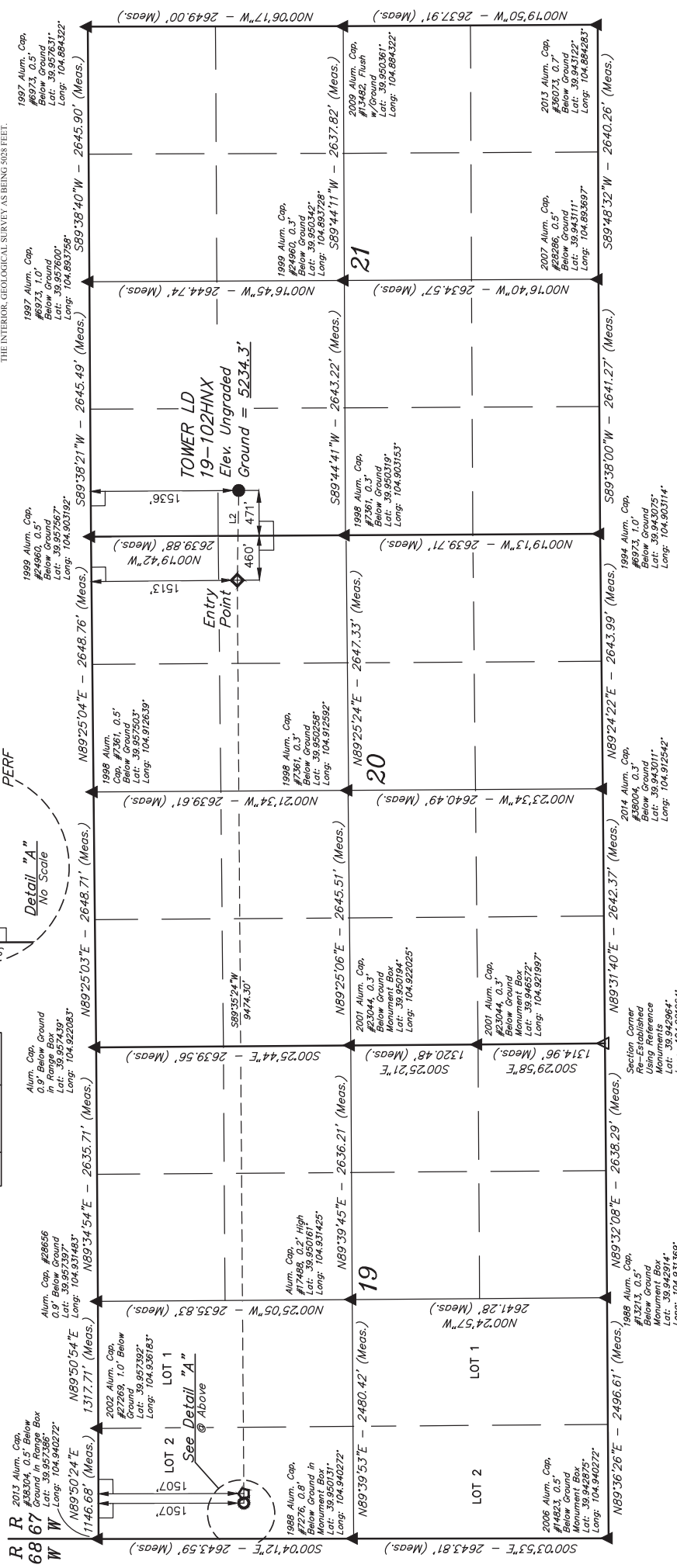


LINE TABLE		
LINE	DIRECTION	LENGTH
L1	S89°50'24"W	100.00'
L2	N89°04'03"W	931.07'



GREAT WESTERN OPERATING COMPANY
TOWER LD 19-102HNX
SW 1/4 NW 1/4 SECTION 21, T1S, R67W, 6th P.M.
ADAMS COUNTY, COLORADO

BASE OF BEARINGS
BASE OF ELEVATION
BENCHMARK (B) 53 4026 LOCAL ELEVATION (L) 115.118 B.M. 408
P.M. TAKEN FROM 1988 PUBLISHED DATUM BY THE UNITED STATES DEPARTMENT OF
THE INTERIOR, GEOLOGICAL SURVEY AS BEING 4025 FEET.



PDOP = 1.2

LEGEND:

- 90° SYMBOL
- PROPOSED WELLHEAD
- ENTRANCE POINT
- BTM PERF.
- TARGET BOTTOM HOLE
- SECTION CORNERS
- SECTION CORNERS
- RE-ESTABLISHED
- (Not Set on Ground)
- (NAD 83)

CERTIFICATE OF RECORDING
THIS IS TO CERTIFY THAT THE ABOVE
NOTES OF ACTUAL SURVEYS MADE
AND THAT THE SAME ARE TRUE AND
KNOWLEDGE AND BELIEF.

NAD 83 (SURFACE LOCATION)	NAD 83 (ENTRY POINT)
LATITUDE = 39°57'12.08" (39.953357)	LATITUDE = 39°57'12.25" (39.953402)
LONGITUDE = 104°54'05.36" (104.901400)	LONGITUDE = 104°54'17.32" (104.904810)
NAD 27 (SURFACE LOCATION)	NAD 27 (ENTRY POINT)
LATITUDE = 39°57'12.14" (39.953372)	LATITUDE = 39°57'12.30" (39.953418)
LONGITUDE = 104°54'05.45" (104.900958)	LONGITUDE = 104°54'15.40" (104.904278)
NAD 83 (BTM PERF)	NAD 83 (TARGET BOTTOM HOLE)
LATITUDE = 39°57'11.71" (39.953352)	LATITUDE = 39°57'11.71" (39.953352)
LONGITUDE = 104°56'18.94" (104.938955)	LONGITUDE = 104°56'20.23" (104.938952)
NAD 27 (BTM PERF)	NAD 27 (TARGET BOTTOM HOLE)
LATITUDE = 39°57'12.50" (39.957084)	LATITUDE = 39°57'11.76" (39.953367)
LONGITUDE = 104°56'17.02" (104.938062)	LONGITUDE = 104°56'18.31" (104.938418)

REV: 1 7-27-18 B.L.B. NEW SL LOCATIONS ADDED BTM PERF

UETLS, LLC
Corporate Office * 85 South 200 East
Vernal, UT 84078 * (435) 789-1017

SURVEYED BY GREG WEIMER, D.D.
DRAWN BY L.C.S.

SCALE
1" = 1000'

WELL LOCATION PLAT