

Feb-13-2019  
EMM-2015 [2000.0-2020.0] Dip: 66.26 deg Field: 51918.8 nT  
Lat: N39 57 12.0780 Long: W104 54 6.9048 Elev: 5239.60 ft  
Magnetic North is 8.14 deg East of TRUE North  
To correct azimuth from Magnetic to TRUE add 8.14 deg

# Great Western Operating Company, LLC

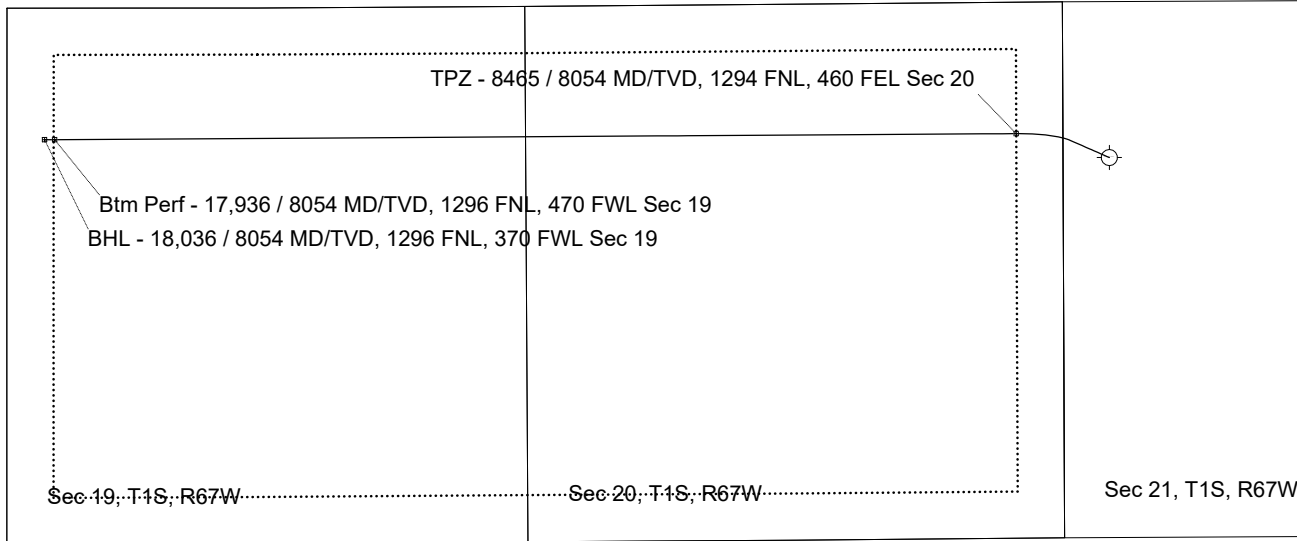
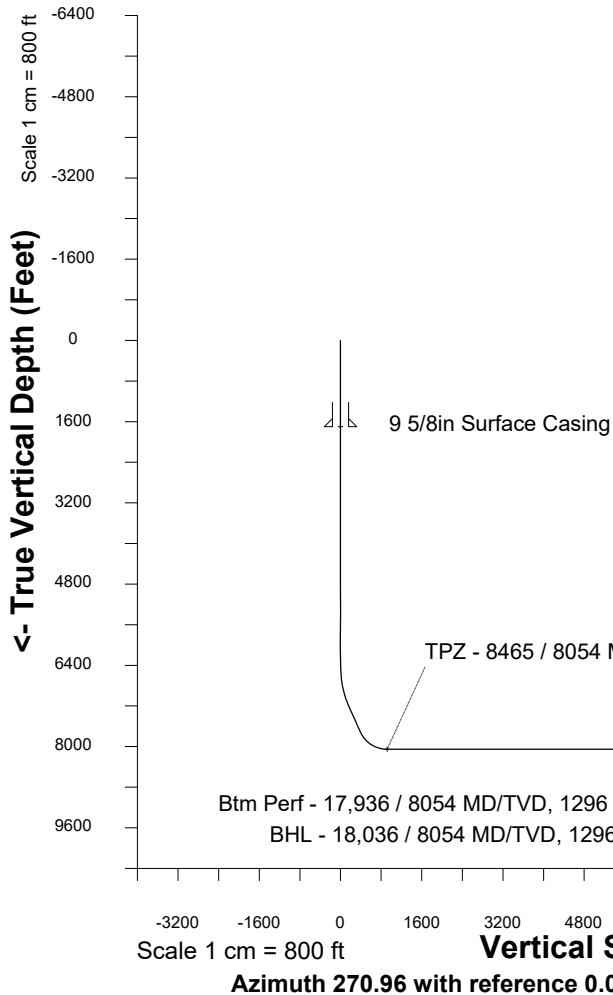
Location	Colorado	Slot	N08 - Tower LD 19-099HC
Field	Wattenburg	Well	Tower LD 19-099HC
Installation	Tower	Wellbore	Tower LD 19-099HC (PWB)

Created by	admin
Date plotted	14-Feb-2019
Plot reference is Tower LD 19-099HC (PWB).	
Ref wellpath is Tower LD 19-099HC (PWP#1).	
Coordinates are in Feet reference N08 - Tower LD 19-099HC.	
True Vertical Depths are reference Rig Datum.	
Measured Depths are reference Rig Datum.	
Rig Datum: Planned Datum #1	
Rig Datum to Mean Sea Level: 5259.60 ft.	
Plot North is aligned to TRUE North.	

Scale 1 cm = 400 ft

East (Feet) ->

-12000 -11200 -10400 -9600 -8800 -8000 -7200 -6400 -5600 -4800 -4000 -3200 -2400 -1600 -800 0 800 1600



<- North(Feet)

Scale 1 cm = 400 ft

## WELL PROFILE DATA

Point	MD	Inc	Azi	TVD	North	East	deg/100ft	V. Sect
Tie on	0.00	0.00	0.00	0.00	S 0.00	W 0.00		0.00
KOP	6405.00	0.00	293.65	6405.00	S 0.00	W 0.00	0.00	0.00
End of Build	7278.07	26.19	293.65	7247.97	N 78.67	W 179.63	3.00	180.92
End of Hold	7802.65	26.19	293.65	7718.69	N 171.56	W 391.72	0.00	394.53
Target TPZ - ...Sec 20	8464.89	90.00	269.63	8054.00	N 235.34	W 916.47	10.00	920.27
Target Btm Pe...Sec 19	17935.94	90.00	269.63	8054.00	N 174.84	W 10387.33	0.00	10388.80
End of Turn	17939.92	90.00	270.03	8054.00	N 174.83	W 10391.31	10.00	10392.78
T.D. & Target BHL... 19	18036.02	90.00	270.03	8054.00	N 174.88	W 10487.41	0.00	10488.87