

T1S, R67W, 6th P.M. N

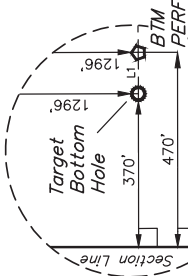
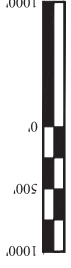
GREAT WESTERN OPERATING COMPANY

TOWER LD 19-099HC  
SW 1/4 NW 1/4 SECTION 21, T1S, R67W, 6th P.M.  
ADAMS COUNTY, COLORADO

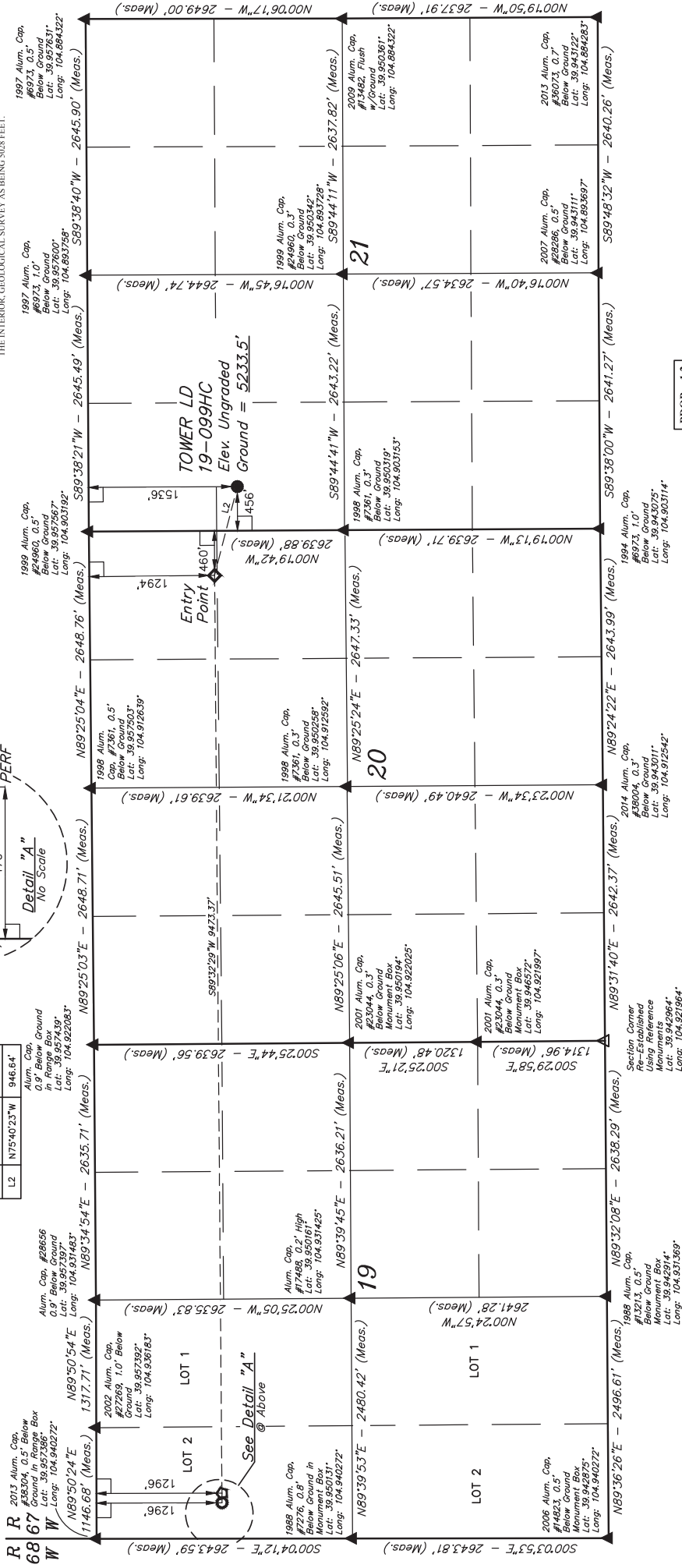
BASIS OF BEARINGS

BASIS OF ELEVATION

BENCHMARK (B) 53 4026 LOCAL ELEVATION (L) 115.716 (B) 4026  
P.A.L. TAKEN FROM 1988 PUBLISHED DATUM BY THE UNITED STATES DEPARTMENT OF THE INTERIOR, GEOLOGICAL SURVEY AS BEING 4025 FEET.



LINE TABLE	
LINE	DIRECTION LENGTH
L1	S89°50'24"W 100.00'
L2	N75°40'23"W 946.64'



LEGEND:

- 90° SYMBOL
- PROPOSED WELLHEAD
- ENTRY POINT
- BTM PERF
- TARGET BOTTOM HOLE
- SECTION CORNERS
- SECTION CORNERS RE-ESTABLISHED
- (Not Set on Ground)
- (NAD 83)

THIS IS TO CERTIFY THAT THE ABOVE NOTES OF ACTUAL SURVEYS MADE BY ME AND THAT THE SAME ARE TRUE AND KNOWLEDGE AND BELIEF.

CERTIFICATE OF RECORDING  
RECORDED AND RETURNED TO THE DEPT OF  
RECEIVED LAND SURVEYOR  
RECORDS SECTION NO. 2835  
STATE OF COLORADO  
JAN 18 2018

PDOP = 1.2

NAD 83 (SURFACE LOCATION)	NAD 83 (ENTRY POINT)
LATITUDE = 39°57'12.08" (39.953357)	LATITUDE = 39°57'14.41" (39.954003)
LONGITUDE = 104°54'05.56" (104.901544)	LONGITUDE = 104°54'17.33" (104.904813)
NAD 27 (SURFACE LOCATION)	NAD 27 (ENTRY POINT)
LATITUDE = 39°57'12.14" (39.953372)	LATITUDE = 39°57'14.47" (39.954019)
LONGITUDE = 104°54'03.64" (104.901012)	LONGITUDE = 104°54'15.41" (104.904281)
NAD 83 (BTM PERF)	NAD 83 (TARGET BOTTOM HOLE)
LATITUDE = 39°57'13.79" (39.953831)	LATITUDE = 39°57'13.79" (39.953831)
LONGITUDE = 104°56'18.94" (104.938955)	LONGITUDE = 104°56'20.23" (104.938952)
NAD 27 (BTM PERF)	NAD 27 (TARGET BOTTOM HOLE)
LATITUDE = 39°57'13.85" (39.953847)	LATITUDE = 39°57'13.85" (39.953846)
LONGITUDE = 104°56'17.02" (104.938662)	LONGITUDE = 104°56'18.31" (104.938418)

REV: 1 7-27-18 B.L.B. NEW SL LOCATIONS ADDED BTM PERF

**JUNTAH**  
ENGINEERING & LAND SURVEYING  
SURVEYED BY: GREG WEIMER, D.D.  
DRAWN BY: L.C.S.  
SCALE: 1" = 1000'  
WELL LOCATION PLAT

UELS, LLC  
Corporate Office \* 85 South 200 East  
Vernal, UT 84078 \* (435) 789-1017