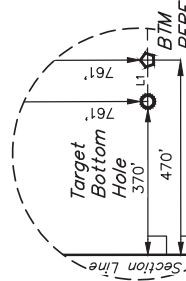


SW 1/4 NW 1/4, SECTION 21, T1S, R67W, 6th P.M.
ADAMS COUNTY, COLORADO

BASIS OF BEARINGS IS A G.P.S. OBSERVATION

BENCHMARK JR 53 5026 LOCATED IN THE SW 1/4 SE 1/4 OF SECTION 18, T1N, R68W, 6th P.M., TAKEN FROM 1983 PUBLISHED DATUM BY THE UNITED STATES DEPARTMENT OF THE INTERIOR, GEOLOGICAL SURVEY AS BEING 3028 FEET.



Alum. Cap,
0.9' Below Ground
in Range Box
Lat: 39.957439°
Long: 104.922083°



SYMBOLS

\perp = 90° SYMBOL.

— = 90° SYMBOL

100

● = PROPOSED

◇ = ENTRY POINT

 Δ = RTM PERE

- TARGET BOT

○ = TARGET BUILT

▲ = SECTION CORNER LOCATED

A
LOCATED. (N
$$\Delta = \text{SECTION CORRECTION ESTABLISHED}$$

(Not Set on

(NAD 83)

THIS IS TO CERTIFY THAT THE ABOVE
NOTES OF ACTUAL SURVEYS MADE
AND THAT THE SAME ARE TRUE IN
KNOWLEDGE AND BELIEF.

NAD 83 (SURFACE LOCATION)	NAD 83 (ENTRANCE POLE)
LATITUDE = 39°57'12.08" (39.953356)	LATITUDE = 39°57'19.70" (39.955472)
LONGITUDE = 104°54'06.13" (104.901704)	LONGITUDE = 104°54'17.36" (104.904821)
NAD 27 (SURFACE LOCATION)	NAD 27 (ENTRANCE POLE)
LATITUDE = 39°57'12.14" (39.953371)	LATITUDE = 39°57'19.75" (39.955487)
LONGITUDE = 104°54'04.22" (104.901172)	LONGITUDE = 104°54'15.44" (104.904289)
NAD 83 (BTM PERG)	NAD 83 (TARGET BOTTOM HOLE)
LATITUDE = 39°57'19.08" (39.953500)	LATITUDE = 39°57'19.08" (39.953500)
LONGITUDE = 104°56'18.94" (104.938595)	LONGITUDE = 104°56'20.23" (104.938952)
NAD 27 (BTM PERG)	NAD 27 (TARGET BOTTOM HOLE)
LATITUDE = 39°57'19.07" (39.953515)	LATITUDE = 39°57'19.13" (39.953534)
LONGITUDE = 104°56'17.02" (104.938062)	LONGITUDE = 104°56'36.56" (104.938419)

REV: 1 7-27-18 B I B (NEW S I LOCATIONS ADDED BTM PER F



JINTAH
ENGINEERING, INC.

UELS, LLC
Corporate Office * 85 South
Vernal, UT 84078 * (435)

SURVEYED BY	GREG WEIMER, D.D.	06-13-18	SCALE
--------------------	--------------------------	-----------------	--------------

DRAWN BY	L.C.S.	11-28-16	1" = 1000'
----------	--------	----------	------------

WELL LOCATION PLAT