

Great Western Operating Company, LLC

Location Colorado
Field Wattenburg
Installation Tower

Slot N04 - Tower LD 19-022HC
Well Tower LD 19-022HC
Wellbore Tower LD 19-022HC (PWB)

Created by admin
Date plotted 14-Feb-2019

Plot reference is Tower LD 19-022HC (PWB).
Ref wellpath is Tower LD 19-022HC (PWP#1).
Coordinates are in Feet reference N04 - Tower LD 19-022HC.
True Vertical Depths are reference Rig Datum.
Measured Depths are reference Rig Datum.
Rig Datum: Planned Datum #1
Rig Datum to Mean Sea Level: 5259.60 ft.
Plot North is aligned to TRUE North.

Scale 1 cm = 400 ft

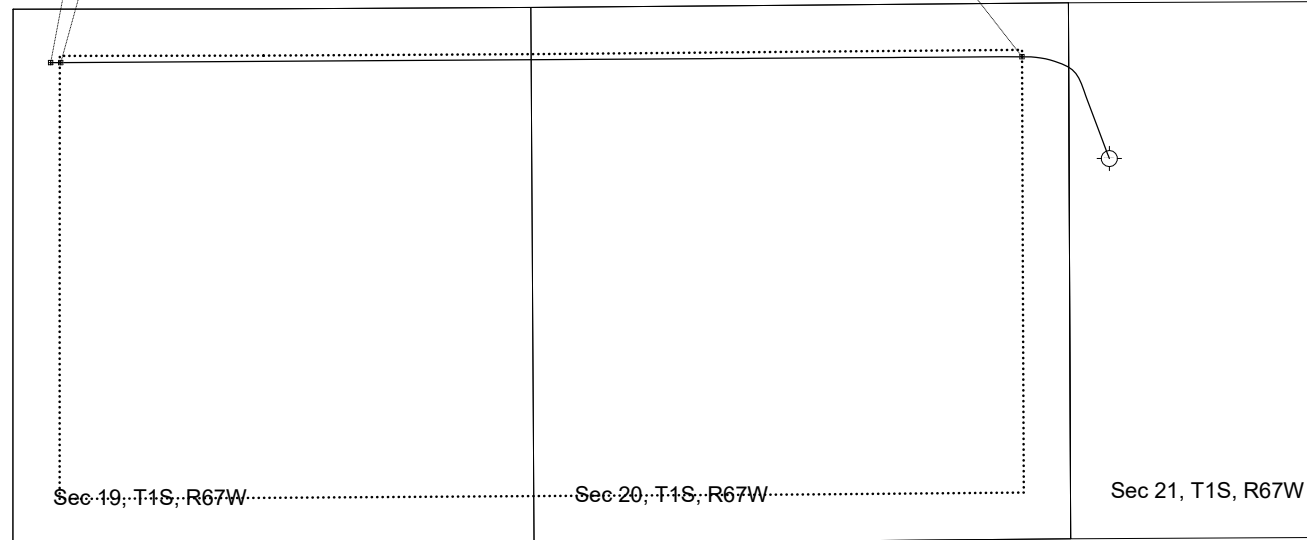
East (Feet) ->

-12000 -11200 -10400 -9600 -8800 -8000 -7200 -6400 -5600 -4800 -4000 -3200 -2400 -1600 -800 0 800 1600

BHL - 18,206 / 8054 MD/TVD, 526.47 FNL, 370 FWL Sec 19

Btm Perf - 18,105 / 8054 MD/TVD, 526.47 FNL, 470 FWL Sec 19

TPZ - 8738 / 8054 MD/TVD, 526.47 FNL, 460 FEL Sec 20



2400

1600

800

0

-800

-1600

-2400

-3200

-4000

-4800

-5600

-6400

<- North(Feet)

Scale 1 cm = 400 ft

<- True Vertical Depth (Feet)

Scale 1 cm = 800 ft

9 5/8in Surface Casing

TPZ - 8738 / 8054 MD/TVD, 526.47 FNL, 460 FEL Sec 20

5 1/2in Production Casing

Btm Perf - 18,105 / 8054 MD/TVD, 526.47 FNL, 470 FWL Sec 19

BHL - 18,206 / 8054 MD/TVD, 526.47 FNL, 370 FWL Sec 19

-3200 -1600 0 1600 3200 4800 6400 8000 9600 11200 12800 14400 16000

Scale 1 cm = 800 ft

Vertical Section (Feet) ->

Azimuth 275.18 with reference 0.00 N, 0.00 E from N04 - Tower LD 19-022HC

WELL PROFILE DATA

Point	MD	Inc	Azi	TVD	North	East	deg/100ft	V. Sect
Tie on	0.00	0.00	0.00	0.00	S 0.00	W 0.00		0.00
KOP	5680.00	0.00	339.39	5680.00	S 0.00	W 0.00	0.00	0.00
End of Build	6679.90	30.00	339.39	6634.84	N 239.44	W 90.07	3.00	111.30
End of Hold	7837.52	30.00	339.39	7637.40	N 781.14	W 293.84	0.00	363.11
Target TPZ - ...Sec 20	8637.83	90.00	269.64	8054.00	N 1003.25	W 859.53	10.00	946.54
Target Btm Pe...Sec 19	18105.49	90.00	269.64	8054.00	N 944.55	W 10327.01	0.00	10370.11
End of Turn	18109.36	90.00	270.03	8054.00	N 944.54	W 10330.88	10.00	10373.96
T.D. & Target BHL.... 19	18205.57	90.00	270.03	8054.00	N 944.59	W 10427.10	0.00	10469.79