

HSR-WEST FARM 6-14A



RECEIVED

JAN 21 00

COGCC

Surface Location: 1877' FNL & 828' FWL SW/NW Sec 14, T3N, R67W

Projected Bottomhole Location: 1980' FNL & 1980' FWL SE/NW Sec. 14, T3N, R67W

MEASURED DEPTH	INCLINATION DEGREES	AZIMUTH DEGREES	TVD	DEP NORTH	DEP EAST	DOGLEG SEVERITY
-------------------	------------------------	--------------------	-----	--------------	-------------	--------------------

0	0.00	202.70				
3,458	0.00	95.11	3,457.53	(0.00)	(0.00)	0.00
3,558	0.00	95.11	3,557.53	(0.00)	(0.00)	0.00
3,658	0.00	95.11	3,657.53	(0.00)	(0.00)	0.00
3,758	5.00	95.11	3,757.41	(0.39)	4.34	5.00
3,858	10.00	95.11	3,856.52	(1.55)	17.35	5.00
3,958	15.00	95.11	3,954.12	(3.48)	38.90	5.00
4,058	20.00	95.11	4,049.46	(6.16)	68.85	5.00
4,158	25.00	95.11	4,141.82	(9.56)	106.97	5.00
5,737	25.00	95.11	5,573.06	(69.00)	771.72	0.00
5,835	25.00	95.11	5,662.51	(72.71)	813.27	0.00
5,934	25.00	95.11	5,751.96	(76.43)	854.81	0.00
6,033	25.00	95.11	5,841.42	(80.14)	896.36	0.00
6,132	25.00	95.11	5,930.87	(83.86)	937.91	0.00
6,232	22.50	95.11	6,022.39	(87.44)	978.02	2.50
6,332	20.00	95.11	6,115.59	(90.67)	1,014.12	2.50
6,432	17.50	95.11	6,210.27	(93.54)	1,046.14	2.50
6,532	15.00	95.11	6,306.27	(96.03)	1,074.01	2.50
6,632	12.50	95.11	6,403.39	(98.14)	1,097.68	2.50
6,732	10.00	95.11	6,501.47	(99.88)	1,117.12	2.50
6,832	7.50	95.11	6,600.29	(101.24)	1,132.27	2.50
6,932	5.00	95.11	6,699.69	(102.21)	1,143.11	2.50
7,032	2.50	95.11	6,799.47	(102.79)	1,149.63	2.50
7,132	0.00	95.11	6,899.44	(102.98)	1,151.80	2.50
7,232	0.00	95.11	6,999.44	(102.98)	1,151.80	0.00
7,332	0.00	95.11	7,099.44	(102.98)	1,151.80	0.00
7,432	0.00	95.11	7,199.44	(102.98)	1,151.80	0.00
7,532	0.00	95.11	7,299.44	(102.98)	1,151.80	0.00
7,632	0.00	95.11	7,399.44	(102.98)	1,151.80	0.00
7,732	0.00	95.11	7,499.44	(102.98)	1,151.80	0.00
7,832	0.00	95.11	7,599.44	(102.98)	1,151.80	0.00
7,932	0.00	95.11	7,699.44	(102.98)	1,151.80	0.00
8,032	0.00	95.11	7,799.44	(102.98)	1,151.80	0.00
8,132	0.00	95.11	7,899.44	(102.98)	1,151.80	0.00

Begin Build @ 5 degrees/100 ft.

End Of Build. Start Tangent

End of Tangent Begin Drop

@2.5 degrees/100 ft

End of Drop



RECEIVED

JAN 21 00

COGCC

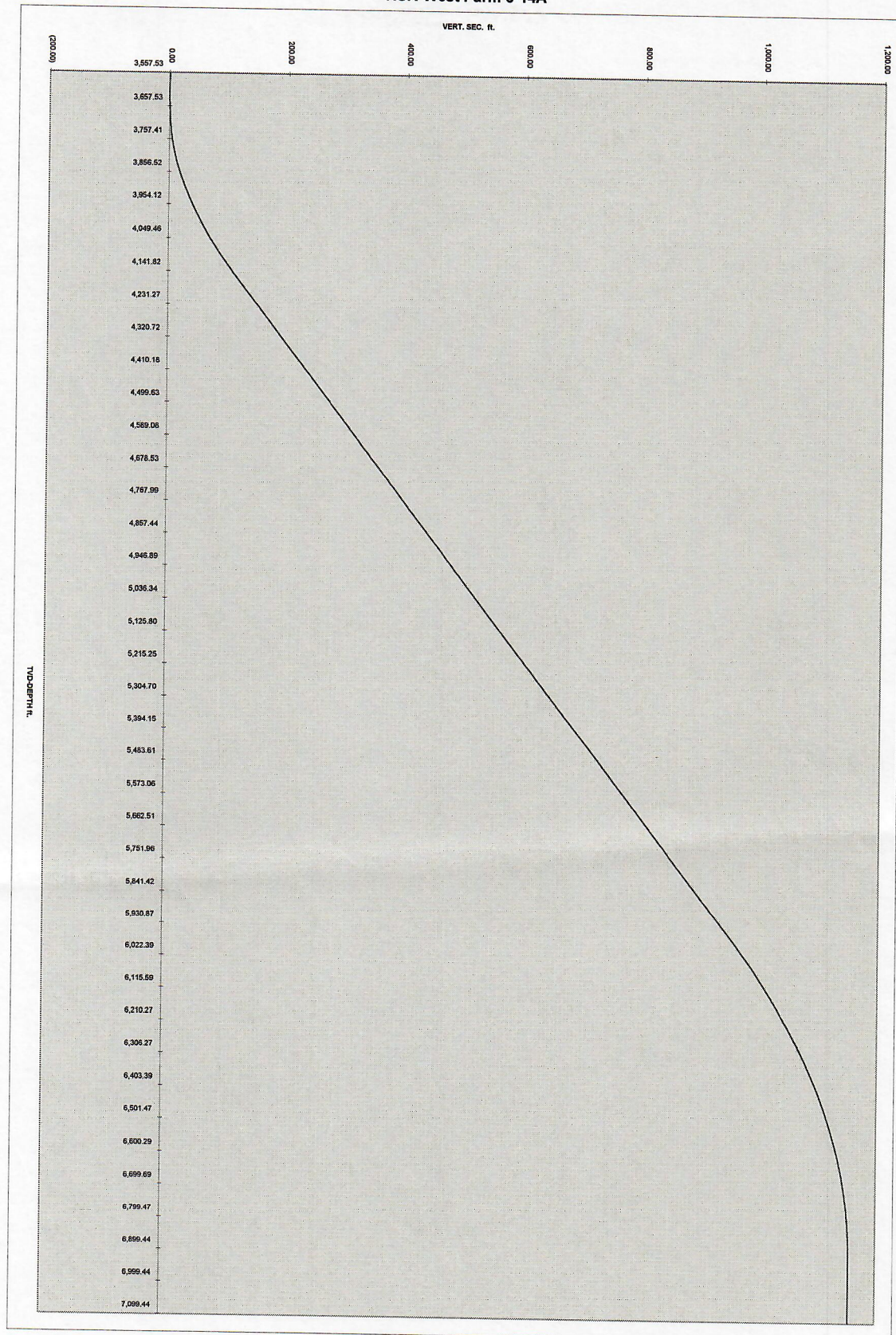
HSR-WEST FARM 6-14A

Surface Location: 1877' FNL & 828' FWL SW/NW Sec 14, T3N, R67W

Projected Bottomhole Location: 1980' FNL & 1980' FWL SE/NW Sec. 14, T3N, R67W

MEASURED DEPTH	INCLINATION DEGREES	AZIMUTH DEGREES	TVD	DEP NORTH	DEP EAST	DOGLEG SEVERITY	
0	0.00	202.70					
3,458	0.00	95.11	3,457.53	(0.00)	(0.00)	0.00	
3,558	0.00	95.11	3,557.53	(0.00)	(0.00)	0.00	
3,658	0.00	95.11	3,657.53	(0.00)	(0.00)	0.00	Begin Build @ 5 degrees/100 ft.
3,758	5.00	95.11	3,757.41	(0.39)	4.34	5.00	
3,858	10.00	95.11	3,856.52	(1.55)	17.35	5.00	
3,958	15.00	95.11	3,954.12	(3.48)	38.90	5.00	
4,058	20.00	95.11	4,049.46	(6.16)	68.85	5.00	
4,158	25.00	95.11	4,141.82	(9.56)	106.97	5.00	End Of Build. Start Tangent
5,737	25.00	95.11	5,573.06	(69.00)	771.72	0.00	
5,835	25.00	95.11	5,662.51	(72.71)	813.27	0.00	
5,934	25.00	95.11	5,751.96	(76.43)	854.81	0.00	
6,033	25.00	95.11	5,841.42	(80.14)	896.36	0.00	
6,132	25.00	95.11	5,930.87	(83.86)	937.91	0.00	End of Tangent Begin Drop
6,232	22.50	95.11	6,022.39	(87.44)	978.02	2.50	@2.5 degrees/100 ft
6,332	20.00	95.11	6,115.59	(90.67)	1,014.12	2.50	
6,432	17.50	95.11	6,210.27	(93.54)	1,046.14	2.50	
6,532	15.00	95.11	6,306.27	(96.03)	1,074.01	2.50	
6,632	12.50	95.11	6,403.39	(98.14)	1,097.68	2.50	
6,732	10.00	95.11	6,501.47	(99.88)	1,117.12	2.50	
6,832	7.50	95.11	6,600.29	(101.24)	1,132.27	2.50	
6,932	5.00	95.11	6,699.69	(102.21)	1,143.11	2.50	
7,032	2.50	95.11	6,799.47	(102.79)	1,149.63	2.50	
7,132	0.00	95.11	6,899.44	(102.98)	1,151.80	2.50	End of Drop
7,232	0.00	95.11	6,999.44	(102.98)	1,151.80	0.00	
7,332	0.00	95.11	7,099.44	(102.98)	1,151.80	0.00	
7,432	0.00	95.11	7,199.44	(102.98)	1,151.80	0.00	
7,532	0.00	95.11	7,299.44	(102.98)	1,151.80	0.00	
7,632	0.00	95.11	7,399.44	(102.98)	1,151.80	0.00	
7,732	0.00	95.11	7,499.44	(102.98)	1,151.80	0.00	
7,832	0.00	95.11	7,599.44	(102.98)	1,151.80	0.00	
7,932	0.00	95.11	7,699.44	(102.98)	1,151.80	0.00	
8,032	0.00	95.11	7,799.44	(102.98)	1,151.80	0.00	
8,132	0.00	95.11	7,899.44	(102.98)	1,151.80	0.00	

HSR-West Farm 6-14A



Plan View

PLAN VIEW

HSR-WEST FARM 6-14A

Surface Location: 1877' FNL & 828' FWL SW/NW Sec 14, T3N, R67W

Projected Bottomhole Location: 1980' FNL & 1980' FWL SE/NW Sec. 14, T3N, R67W

RECEIVED

JAN 21 00

COGCC

