

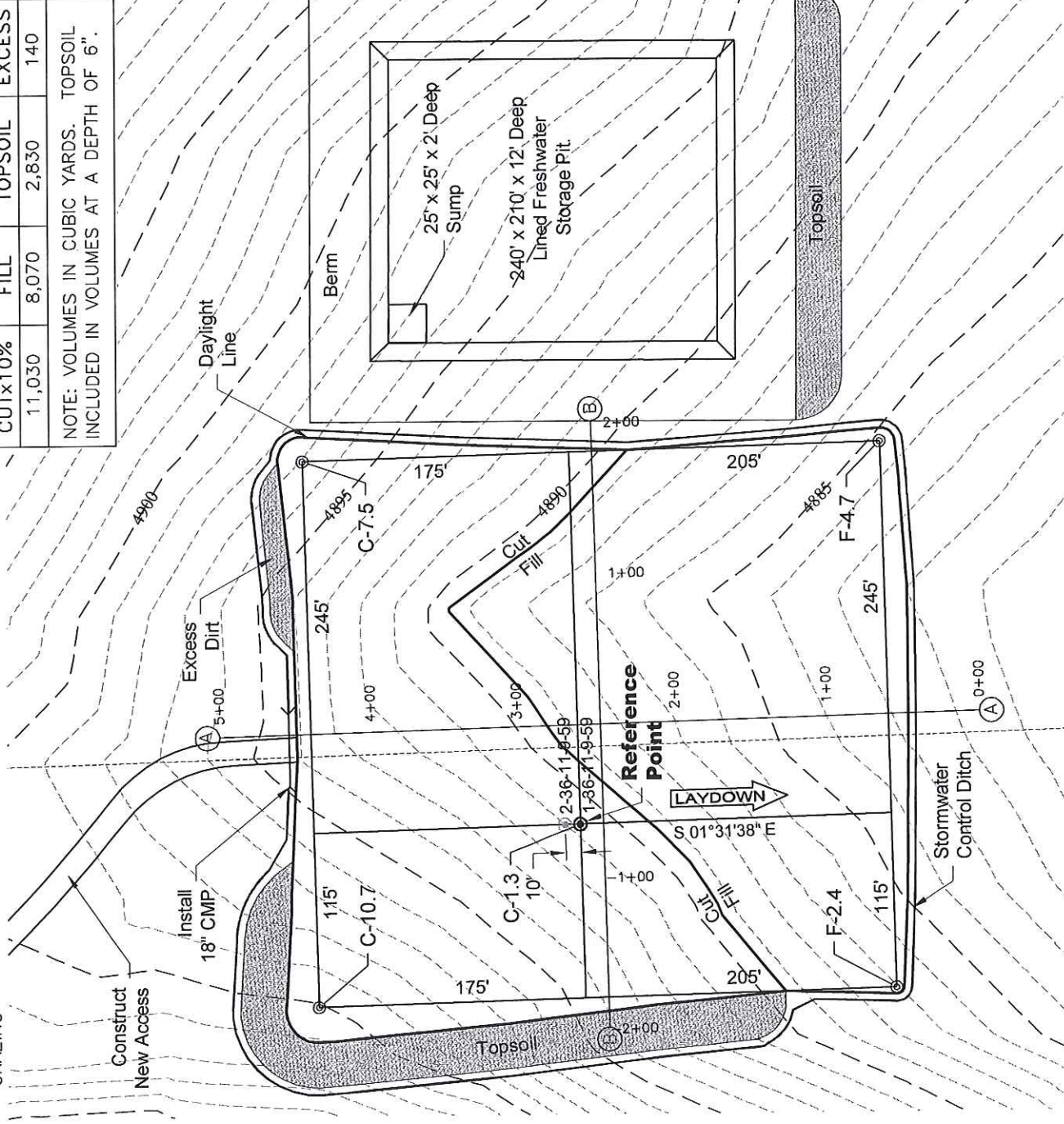
# CONSTRUCTION LAYOUT DRAWING

1 of 2

**VEGETATION:**  
DRY LAND PASTURE

**SURFACE USE:**  
GRAZING

PAD 360'X380' ELEV= 4889.4'			
DISTURBED AREA=4.4± ACRES			
ESTIMATED DIRT QUANTITIES			
CUTx10%	FILL	TOPSOIL	EXCESS
11,030	8,070	2,830	140
NOTE: VOLUMES IN CUBIC YARDS. TOPSOIL INCLUDED IN VOLUMES AT A DEPTH OF 6".			



NOTE:  
10% ALLOWANCE IS MADE FOR SOIL EXPANSION.

7/16/12



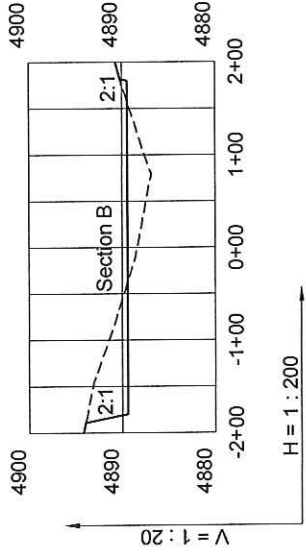
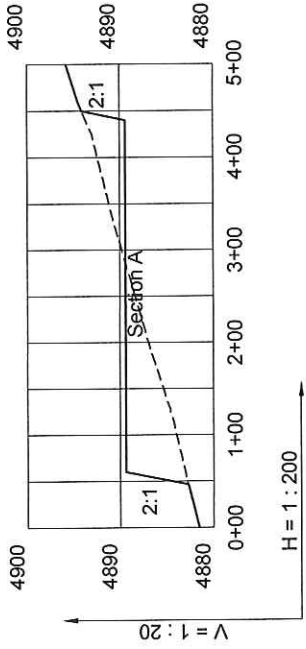
LAND SURVEYING AND MAPPING  
LAFAYETTE - WINTER PARK  
Ph 303 666 0379 Fx 303 665 6320

**CARRIZO OIL & GAS, INC**  
CASTOR 36-11-9-59 PAD

NW1/4 NW1/4 SEC. 36 T9N R59W  
6th PM WELD COUNTY COLORADO

# CONSTRUCTION LAYOUT DRAWING

2 of 2



----- Existing Ground  
 \_\_\_\_\_ Proposed Grade



LAND SURVEYING AND MAPPING  
 LAFAYETTE - WINTER PARK  
 Ph 303 666 0379 Fx 303 665 6320

**CARRIZO OIL & GAS, INC**  
 CASTOR 36-11-9-59 PAD

NW1/4 NW1/4 SEC. 36 T9N R59W  
 6th PM WELD COUNTY COLORADO

7/16/12