

# **SRC ENERGY**

**WELD COUNTY (NAD83, TRUE NORTH)**

**5N-66W-05 VOLT 19-5 PAD**

**VOLT 11C-3-L**

**Wellbore #1**

**Plan: Design #1**

## **Standard Planning Report**

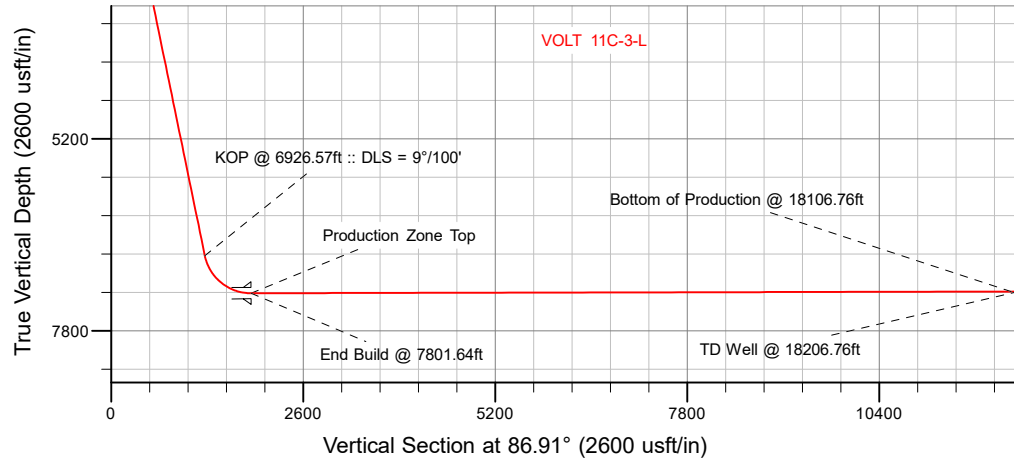
**18 November, 2018**

Project: WELD COUNTY (NAD83, TRUE NORTH)  
Site: 5N-66W-05 VOLT 19-5 PAD  
Well: VOLT 11C-3-L  
Wellbore: Wellbore #1  
Design: Design #1

# SRC ENERGY

## CASING DETAILS

TVD	MD	Name
1800.00	1825.79	9 5/8"
7292.00	7801.64	Production Zone Top



## SECTION DETAILS

Sec	MD	Inc	Azi	TVD	+N/-S	+E/-W	Dleg	TFace	VSect	Target
1	0.00	0.00	0.00	0.00	0.00	0.00	0.00	0.00	0.00	
2	300.00	0.00	0.00	300.00	0.00	0.00	0.00	0.00	0.00	
3	917.50	12.35	66.75	912.73	26.17	60.91	2.00	66.75	62.23	
4	6926.57	12.35	66.75	6782.75	533.51	1241.77	0.00	0.00	1268.75	
5	7801.64	90.13	89.55	7292.00	581.71	1866.96	9.00	23.27	1895.63	
6	18106.76	90.13	89.55	7269.00	662.39	12171.73	0.00	0.00	12189.74	VOLT 11C-3-L_BPZ
7	18206.76	90.13	89.55	7268.78	663.17	12271.73	0.00	0.00	12289.64	

## WELLBORE TARGET DETAILS (LAT/LONG)

Name	TVD	+N/-S	+E/-W	Latitude	Longitude
VOLT 11C-3-L_SHL	0.00	0.00	0.00	40.424565	-104.809520
VOLT 11C-3-L_BHL	7268.78	663.17	12271.73	40.426377	-104.765441
VOLT 11C-3-L_BPZ	7269.00	662.39	12171.73	40.426375	-104.765800

**SHL**  
1177' FSL  
987' FWL

**LP**  
1745' FSL  
2487' FEL  
40.426159° Lat  
-104.802819° Long

**BPZ**  
1844' FSL  
2413' FWL

**BHL**  
1845' FSL  
2512' FWL

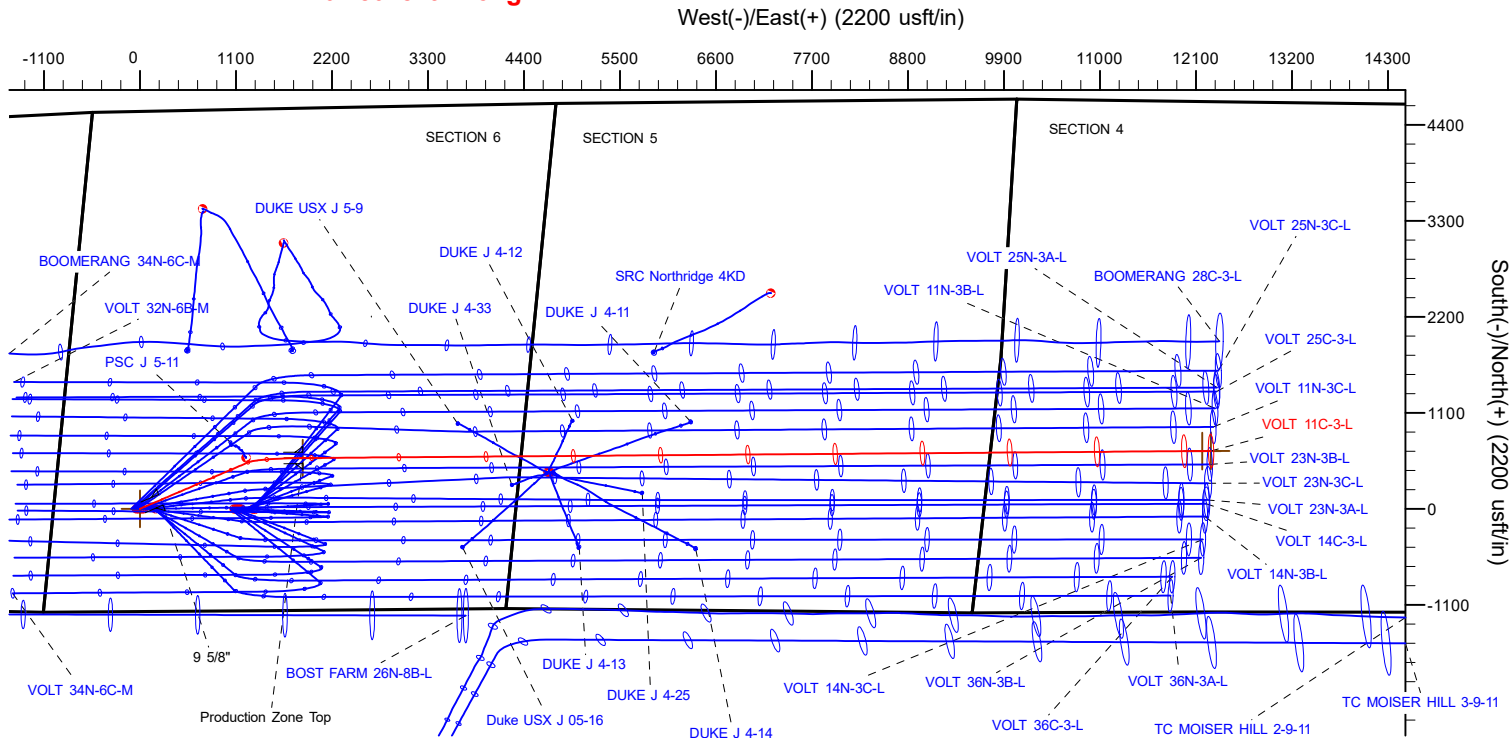
## WELL DETAILS: VOLT 11C-3-L

GL = 4815'

RKB = 4' @ 4819.00usft (IKON 12)

Plan: Design #1 (VOLT 11C-3-L/Wellbore #1)

Date: 11/19/2018



**T** Azimuths to True North  
**M** Magnetic North: 8.09°  
Magnetic Field  
Strength: 52243.3nT  
Dip Angle: 66.83°  
Date: 11/2/2018  
Model: IGRF2015

# Hewlett-Packard

## Planning Report

<b>Database:</b>	EDM 5000.14 Single User Db	<b>Local Co-ordinate Reference:</b>	Well VOLT 11C-3-L
<b>Company:</b>	SRC ENERGY	<b>TVD Reference:</b>	RKB = 4' @ 4819.00usft (IKON 12)
<b>Project:</b>	WELD COUNTY (NAD83, TRUE NORTH)	<b>MD Reference:</b>	RKB = 4' @ 4819.00usft (IKON 12)
<b>Site:</b>	5N-66W-05 VOLT 19-5 PAD	<b>North Reference:</b>	True
<b>Well:</b>	VOLT 11C-3-L	<b>Survey Calculation Method:</b>	Minimum Curvature
<b>Wellbore:</b>	Wellbore #1		
<b>Design:</b>	Design #1		

<b>Project</b>	WELD COUNTY (NAD83, TRUE NORTH)		
<b>Map System:</b>	US State Plane 1983	<b>System Datum:</b>	Mean Sea Level
<b>Geo Datum:</b>	North American Datum 1983		
<b>Map Zone:</b>	Colorado Northern Zone		

Site		5N-66W-05 VOLT 19-5 PAD			
Site Position:		Northing:	1,398,257.75 usft	Latitude:	40.424567
From:	Lat/Long	Easting:	3,192,134.26 usft	Longitude:	-104.809879
Position Uncertainty:	0.00 usft	Slot Radius:	13-3/16 "	Grid Convergence:	0.45 °

Well	VOLT 11C-3-L					
Well Position	+N/-S	-0.74 usft	Northing:	1,398,257.80 usft	Latitude:	40.424565
	+E/-W	99.95 usft	Easting:	3,192,234.21 usft	Longitude:	-104.809520
Position Uncertainty		3.28 usft	Wellhead Elevation:		Ground Level:	4,815.00 usft

<b>Wellbore</b>	Wellbore #1				
<b>Magnetics</b>	<b>Model Name</b>	<b>Sample Date</b>	<b>Declination (°)</b>	<b>Dip Angle (°)</b>	<b>Field Strength (nT)</b>
	IGRF2015	11/2/2018	8.09	66.83	52,243.28743218

<b>Design</b>	Design #1				
<b>Audit Notes:</b>					
<b>Version:</b>		<b>Phase:</b>	PLAN	<b>Tie On Depth:</b>	0.00
<b>Vertical Section:</b>	<b>Depth From (TVD) (usft)</b>	<b>+N/-S (usft)</b>	<b>+E/-W (usft)</b>	<b>Direction (°)</b>	
	0.00	0.00	0.00	86.91	

<b>Plan Survey Tool Program</b>	<b>Date</b>	11/18/2018			
<b>Depth From (usft)</b>	<b>Depth To (usft)</b>	<b>Survey (Wellbore)</b>	<b>Tool Name</b>	<b>Remarks</b>	
1	0.00	1,800.00	Design #1 (Wellbore #1)	SRC Energy_ISCWSA REV 2	
				Fixed:v2:crustal field declinatio	
2	1,800.00	18,206.76	Design #1 (Wellbore #1)	SRC Energy_ISCWSA REV 2	
				Fixed:v2:Rockies, crustal dec +	

Hewlett-Packard  
Planning Report

Database:	EDM 5000.14 Single User Db	Local Co-ordinate Reference:	Well VOLT 11C-3-L
Company:	SRC ENERGY	TVD Reference:	RKB = 4' @ 4819.00usft (IKON 12)
Project:	WELD COUNTY (NAD83, TRUE NORTH)	MD Reference:	RKB = 4' @ 4819.00usft (IKON 12)
Site:	5N-66W-05 VOLT 19-5 PAD	North Reference:	True
Well:	VOLT 11C-3-L	Survey Calculation Method:	Minimum Curvature
Wellbore:	Wellbore #1		
Design:	Design #1		

Plan Sections										
Measured Depth (usft)	Inclination (°)	Azimuth (°)	Vertical Depth (usft)	+N/-S (usft)	+E/-W (usft)	Dogleg Rate (°/100usft)	Build Rate (°/100usft)	Turn Rate (°/100usft)	TFO (°)	Target
0.00	0.00	0.00	0.00	0.00	0.00	0.00	0.00	0.00	0.00	
300.00	0.00	0.00	300.00	0.00	0.00	0.00	0.00	0.00	0.00	
917.50	12.35	66.75	912.73	26.17	60.91	2.00	2.00	0.00	66.75	
6,926.57	12.35	66.75	6,782.75	533.51	1,241.77	0.00	0.00	0.00	0.00	
7,801.64	90.13	89.55	7,292.00	581.71	1,866.96	9.00	8.89	2.61	23.27	
18,106.76	90.13	89.55	7,269.00	662.39	12,171.74	0.00	0.00	0.00	0.00	VOLT 11C-3-L_BPZ
18,206.76	90.13	89.55	7,268.78	663.17	12,271.73	0.00	0.00	0.00	0.00	

# Hewlett-Packard

## Planning Report

<b>Database:</b>	EDM 5000.14 Single User Db	<b>Local Co-ordinate Reference:</b>	Well VOLT 11C-3-L
<b>Company:</b>	SRC ENERGY	<b>TVD Reference:</b>	RKB = 4' @ 4819.00usft (IKON 12)
<b>Project:</b>	WELD COUNTY (NAD83, TRUE NORTH)	<b>MD Reference:</b>	RKB = 4' @ 4819.00usft (IKON 12)
<b>Site:</b>	5N-66W-05 VOLT 19-5 PAD	<b>North Reference:</b>	True
<b>Well:</b>	VOLT 11C-3-L	<b>Survey Calculation Method:</b>	Minimum Curvature
<b>Wellbore:</b>	Wellbore #1		
<b>Design:</b>	Design #1		

Planned Survey									
Measured Depth (usft)	Inclination (°)	Azimuth (°)	Vertical Depth (usft)	+N/-S (usft)	+E/-W (usft)	Vertical Section (usft)	Dogleg Rate (°/100usft)	Build Rate (°/100usft)	Turn Rate (°/100usft)
0.00	0.00	0.00	0.00	0.00	0.00	0.00	0.00	0.00	0.00
100.00	0.00	0.00	100.00	0.00	0.00	0.00	0.00	0.00	0.00
200.00	0.00	0.00	200.00	0.00	0.00	0.00	0.00	0.00	0.00
300.00	0.00	0.00	300.00	0.00	0.00	0.00	0.00	0.00	0.00
Begin Nudge @ 300.00ft									
400.00	2.00	66.75	399.98	0.69	1.60	1.64	2.00	2.00	0.00
500.00	4.00	66.75	499.84	2.75	6.41	6.55	2.00	2.00	0.00
600.00	6.00	66.75	599.45	6.19	14.42	14.73	2.00	2.00	0.00
700.00	8.00	66.75	698.70	11.01	25.62	26.17	2.00	2.00	0.00
800.00	10.00	66.75	797.47	17.18	39.99	40.86	2.00	2.00	0.00
900.00	12.00	66.75	895.62	24.71	57.52	58.77	2.00	2.00	0.00
917.50	12.35	66.75	912.73	26.17	60.91	62.23	2.00	2.00	0.00
Hold Tangent @ 917.50ft									
1,000.00	12.35	66.75	993.32	33.13	77.12	78.80	0.00	0.00	0.00
1,100.00	12.35	66.75	1,091.01	41.58	96.77	98.88	0.00	0.00	0.00
1,200.00	12.35	66.75	1,188.69	50.02	116.42	118.95	0.00	0.00	0.00
1,300.00	12.35	66.75	1,286.38	58.46	136.08	139.03	0.00	0.00	0.00
1,400.00	12.35	66.75	1,384.06	66.91	155.73	159.11	0.00	0.00	0.00
1,500.00	12.35	66.75	1,481.75	75.35	175.38	179.19	0.00	0.00	0.00
1,600.00	12.35	66.75	1,579.44	83.79	195.03	199.27	0.00	0.00	0.00
1,700.00	12.35	66.75	1,677.12	92.23	214.68	219.35	0.00	0.00	0.00
1,800.00	12.35	66.75	1,774.81	100.68	234.33	239.42	0.00	0.00	0.00
1,825.79	12.35	66.75	1,800.00	102.85	239.40	244.60	0.00	0.00	0.00
9 5/8"									
1,900.00	12.35	66.75	1,872.49	109.12	253.98	259.50	0.00	0.00	0.00
2,000.00	12.35	66.75	1,970.18	117.56	273.64	279.58	0.00	0.00	0.00
2,100.00	12.35	66.75	2,067.87	126.01	293.29	299.66	0.00	0.00	0.00
2,200.00	12.35	66.75	2,165.55	134.45	312.94	319.74	0.00	0.00	0.00
2,300.00	12.35	66.75	2,263.24	142.89	332.59	339.82	0.00	0.00	0.00
2,400.00	12.35	66.75	2,360.92	151.33	352.24	359.89	0.00	0.00	0.00
2,500.00	12.35	66.75	2,458.61	159.78	371.89	379.97	0.00	0.00	0.00
2,600.00	12.35	66.75	2,556.30	168.22	391.54	400.05	0.00	0.00	0.00
2,700.00	12.35	66.75	2,653.98	176.66	411.20	420.13	0.00	0.00	0.00
2,800.00	12.35	66.75	2,751.67	185.11	430.85	440.21	0.00	0.00	0.00
2,900.00	12.35	66.75	2,849.35	193.55	450.50	460.29	0.00	0.00	0.00
3,000.00	12.35	66.75	2,947.04	201.99	470.15	480.36	0.00	0.00	0.00
3,100.00	12.35	66.75	3,044.72	210.44	489.80	500.44	0.00	0.00	0.00
3,200.00	12.35	66.75	3,142.41	218.88	509.45	520.52	0.00	0.00	0.00
3,300.00	12.35	66.75	3,240.10	227.32	529.10	540.60	0.00	0.00	0.00
3,400.00	12.35	66.75	3,337.78	235.76	548.76	560.68	0.00	0.00	0.00
3,500.00	12.35	66.75	3,435.47	244.21	568.41	580.76	0.00	0.00	0.00
3,600.00	12.35	66.75	3,533.15	252.65	588.06	600.83	0.00	0.00	0.00
3,700.00	12.35	66.75	3,630.84	261.09	607.71	620.91	0.00	0.00	0.00
3,800.00	12.35	66.75	3,728.53	269.54	627.36	640.99	0.00	0.00	0.00
3,900.00	12.35	66.75	3,826.21	277.98	647.01	661.07	0.00	0.00	0.00
4,000.00	12.35	66.75	3,923.90	286.42	666.66	681.15	0.00	0.00	0.00
4,100.00	12.35	66.75	4,021.58	294.86	686.31	701.23	0.00	0.00	0.00
4,200.00	12.35	66.75	4,119.27	303.31	705.97	721.30	0.00	0.00	0.00
4,300.00	12.35	66.75	4,216.96	311.75	725.62	741.38	0.00	0.00	0.00
4,400.00	12.35	66.75	4,314.64	320.19	745.27	761.46	0.00	0.00	0.00
4,500.00	12.35	66.75	4,412.33	328.64	764.92	781.54	0.00	0.00	0.00
4,600.00	12.35	66.75	4,510.01	337.08	784.57	801.62	0.00	0.00	0.00
4,700.00	12.35	66.75	4,607.70	345.52	804.22	821.70	0.00	0.00	0.00

# Hewlett-Packard

## Planning Report

<b>Database:</b>	EDM 5000.14 Single User Db	<b>Local Co-ordinate Reference:</b>	Well VOLT 11C-3-L
<b>Company:</b>	SRC ENERGY	<b>TVD Reference:</b>	RKB = 4' @ 4819.00usft (IKON 12)
<b>Project:</b>	WELD COUNTY (NAD83, TRUE NORTH)	<b>MD Reference:</b>	RKB = 4' @ 4819.00usft (IKON 12)
<b>Site:</b>	5N-66W-05 VOLT 19-5 PAD	<b>North Reference:</b>	True
<b>Well:</b>	VOLT 11C-3-L	<b>Survey Calculation Method:</b>	Minimum Curvature
<b>Wellbore:</b>	Wellbore #1		
<b>Design:</b>	Design #1		

Planned Survey									
Measured Depth (usft)	Inclination (°)	Azimuth (°)	Vertical Depth (usft)	+N/-S (usft)	+E/-W (usft)	Vertical Section (usft)	Dogleg Rate (°/100usft)	Build Rate (°/100usft)	Turn Rate (°/100usft)
4,800.00	12.35	66.75	4,705.39	353.96	823.87	841.77	0.00	0.00	0.00
4,900.00	12.35	66.75	4,803.07	362.41	843.53	861.85	0.00	0.00	0.00
5,000.00	12.35	66.75	4,900.76	370.85	863.18	881.93	0.00	0.00	0.00
5,100.00	12.35	66.75	4,998.44	379.29	882.83	902.01	0.00	0.00	0.00
5,200.00	12.35	66.75	5,096.13	387.74	902.48	922.09	0.00	0.00	0.00
5,300.00	12.35	66.75	5,193.82	396.18	922.13	942.17	0.00	0.00	0.00
5,400.00	12.35	66.75	5,291.50	404.62	941.78	962.24	0.00	0.00	0.00
5,500.00	12.35	66.75	5,389.19	413.06	961.43	982.32	0.00	0.00	0.00
5,600.00	12.35	66.75	5,486.87	421.51	981.09	1,002.40	0.00	0.00	0.00
5,700.00	12.35	66.75	5,584.56	429.95	1,000.74	1,022.48	0.00	0.00	0.00
5,800.00	12.35	66.75	5,682.25	438.39	1,020.39	1,042.56	0.00	0.00	0.00
5,900.00	12.35	66.75	5,779.93	446.84	1,040.04	1,062.64	0.00	0.00	0.00
6,000.00	12.35	66.75	5,877.62	455.28	1,059.69	1,082.71	0.00	0.00	0.00
6,100.00	12.35	66.75	5,975.30	463.72	1,079.34	1,102.79	0.00	0.00	0.00
6,200.00	12.35	66.75	6,072.99	472.16	1,098.99	1,122.87	0.00	0.00	0.00
6,300.00	12.35	66.75	6,170.67	480.61	1,118.64	1,142.95	0.00	0.00	0.00
6,400.00	12.35	66.75	6,268.36	489.05	1,138.30	1,163.03	0.00	0.00	0.00
6,500.00	12.35	66.75	6,366.05	497.49	1,157.95	1,183.11	0.00	0.00	0.00
6,600.00	12.35	66.75	6,463.73	505.94	1,177.60	1,203.18	0.00	0.00	0.00
6,700.00	12.35	66.75	6,561.42	514.38	1,197.25	1,223.26	0.00	0.00	0.00
6,800.00	12.35	66.75	6,659.10	522.82	1,216.90	1,243.34	0.00	0.00	0.00
6,900.00	12.35	66.75	6,756.79	531.27	1,236.55	1,263.42	0.00	0.00	0.00
6,926.57	12.35	66.75	6,782.75	533.51	1,241.77	1,268.75	0.00	0.00	0.00
<b>KOP @ 6926.57ft :: DLS = 9°/100'</b>									
7,000.00	18.60	74.95	6,853.49	539.66	1,260.32	1,287.60	9.00	8.51	11.16
7,100.00	27.38	80.12	6,945.46	547.76	1,298.45	1,326.12	9.00	8.78	5.17
7,200.00	36.26	82.90	7,030.35	555.38	1,350.56	1,378.57	9.00	8.88	2.79
7,300.00	45.19	84.71	7,106.06	562.32	1,415.36	1,443.64	9.00	8.92	1.81
7,400.00	54.13	86.02	7,170.73	568.42	1,491.26	1,519.76	9.00	8.94	1.32
7,500.00	63.09	87.07	7,222.77	573.51	1,576.38	1,605.03	9.00	8.96	1.05
7,600.00	72.05	87.97	7,260.89	577.49	1,668.63	1,697.36	9.00	8.96	0.89
7,700.00	81.01	88.77	7,284.16	580.24	1,765.74	1,794.48	9.00	8.97	0.81
7,800.00	89.98	89.54	7,292.01	581.70	1,865.32	1,893.99	9.00	8.97	0.77
7,801.64	90.13	89.55	7,292.00	581.71	1,866.96	1,895.63	8.98	8.95	0.76
<b>End Build @ 7801.64ft - Production Zone Top</b>									
7,900.00	90.13	89.55	7,291.78	582.48	1,965.32	1,993.88	0.00	0.00	0.00
8,000.00	90.13	89.55	7,291.56	583.27	2,065.31	2,093.78	0.00	0.00	0.00
8,100.00	90.13	89.55	7,291.34	584.05	2,165.31	2,193.67	0.00	0.00	0.00
8,200.00	90.13	89.55	7,291.11	584.83	2,265.31	2,293.56	0.00	0.00	0.00
8,300.00	90.13	89.55	7,290.89	585.62	2,365.30	2,393.46	0.00	0.00	0.00
8,400.00	90.13	89.55	7,290.67	586.40	2,465.30	2,493.35	0.00	0.00	0.00
8,500.00	90.13	89.55	7,290.44	587.18	2,565.30	2,593.24	0.00	0.00	0.00
8,600.00	90.13	89.55	7,290.22	587.96	2,665.29	2,693.14	0.00	0.00	0.00
8,700.00	90.13	89.55	7,290.00	588.75	2,765.29	2,793.03	0.00	0.00	0.00
8,800.00	90.13	89.55	7,289.78	589.53	2,865.29	2,892.92	0.00	0.00	0.00
8,900.00	90.13	89.55	7,289.55	590.31	2,965.28	2,992.82	0.00	0.00	0.00
9,000.00	90.13	89.55	7,289.33	591.10	3,065.28	3,092.71	0.00	0.00	0.00
9,100.00	90.13	89.55	7,289.11	591.88	3,165.28	3,192.60	0.00	0.00	0.00
9,200.00	90.13	89.55	7,288.88	592.66	3,265.27	3,292.50	0.00	0.00	0.00
9,300.00	90.13	89.55	7,288.66	593.44	3,365.27	3,392.39	0.00	0.00	0.00
9,400.00	90.13	89.55	7,288.44	594.23	3,465.27	3,492.28	0.00	0.00	0.00
9,500.00	90.13	89.55	7,288.21	595.01	3,565.26	3,592.18	0.00	0.00	0.00
9,600.00	90.13	89.55	7,287.99	595.79	3,665.26	3,692.07	0.00	0.00	0.00
9,700.00	90.13	89.55	7,287.77	596.58	3,765.26	3,791.96	0.00	0.00	0.00

# Hewlett-Packard

## Planning Report

<b>Database:</b>	EDM 5000.14 Single User Db	<b>Local Co-ordinate Reference:</b>	Well VOLT 11C-3-L
<b>Company:</b>	SRC ENERGY	<b>TVD Reference:</b>	RKB = 4' @ 4819.00usft (IKON 12)
<b>Project:</b>	WELD COUNTY (NAD83, TRUE NORTH)	<b>MD Reference:</b>	RKB = 4' @ 4819.00usft (IKON 12)
<b>Site:</b>	5N-66W-05 VOLT 19-5 PAD	<b>North Reference:</b>	True
<b>Well:</b>	VOLT 11C-3-L	<b>Survey Calculation Method:</b>	Minimum Curvature
<b>Wellbore:</b>	Wellbore #1		
<b>Design:</b>	Design #1		

Planned Survey										
Measured Depth (usft)	Inclination (°)	Azimuth (°)	Vertical Depth (usft)	+N/-S (usft)	+E/-W (usft)	Vertical Section (usft)	Dogleg Rate (°/100usft)	Build Rate (°/100usft)	Turn Rate (°/100usft)	
9,800.00	90.13	89.55	7,287.54	597.36	3,865.25	3,891.86	0.00	0.00	0.00	
9,900.00	90.13	89.55	7,287.32	598.14	3,965.25	3,991.75	0.00	0.00	0.00	
10,000.00	90.13	89.55	7,287.10	598.92	4,065.25	4,091.64	0.00	0.00	0.00	
10,100.00	90.13	89.55	7,286.87	599.71	4,165.24	4,191.53	0.00	0.00	0.00	
10,200.00	90.13	89.55	7,286.65	600.49	4,265.24	4,291.43	0.00	0.00	0.00	
10,300.00	90.13	89.55	7,286.43	601.27	4,365.24	4,391.32	0.00	0.00	0.00	
10,400.00	90.13	89.55	7,286.20	602.06	4,465.23	4,491.21	0.00	0.00	0.00	
10,500.00	90.13	89.55	7,285.98	602.84	4,565.23	4,591.11	0.00	0.00	0.00	
10,600.00	90.13	89.55	7,285.76	603.62	4,665.23	4,691.00	0.00	0.00	0.00	
10,700.00	90.13	89.55	7,285.53	604.40	4,765.22	4,790.89	0.00	0.00	0.00	
10,800.00	90.13	89.55	7,285.31	605.19	4,865.22	4,890.79	0.00	0.00	0.00	
10,900.00	90.13	89.55	7,285.09	605.97	4,965.22	4,990.68	0.00	0.00	0.00	
11,000.00	90.13	89.55	7,284.86	606.75	5,065.21	5,090.57	0.00	0.00	0.00	
11,100.00	90.13	89.55	7,284.64	607.54	5,165.21	5,190.47	0.00	0.00	0.00	
11,200.00	90.13	89.55	7,284.42	608.32	5,265.21	5,290.36	0.00	0.00	0.00	
11,300.00	90.13	89.55	7,284.19	609.10	5,365.20	5,390.25	0.00	0.00	0.00	
11,400.00	90.13	89.55	7,283.97	609.88	5,465.20	5,490.15	0.00	0.00	0.00	
11,500.00	90.13	89.55	7,283.75	610.67	5,565.20	5,590.04	0.00	0.00	0.00	
11,600.00	90.13	89.55	7,283.52	611.45	5,665.19	5,689.93	0.00	0.00	0.00	
11,700.00	90.13	89.55	7,283.30	612.23	5,765.19	5,789.83	0.00	0.00	0.00	
11,800.00	90.13	89.55	7,283.08	613.02	5,865.19	5,889.72	0.00	0.00	0.00	
11,900.00	90.13	89.55	7,282.86	613.80	5,965.18	5,989.61	0.00	0.00	0.00	
12,000.00	90.13	89.55	7,282.63	614.58	6,065.18	6,089.51	0.00	0.00	0.00	
12,100.00	90.13	89.55	7,282.41	615.36	6,165.18	6,189.40	0.00	0.00	0.00	
12,200.00	90.13	89.55	7,282.19	616.15	6,265.17	6,289.29	0.00	0.00	0.00	
12,300.00	90.13	89.55	7,281.96	616.93	6,365.17	6,389.19	0.00	0.00	0.00	
12,400.00	90.13	89.55	7,281.74	617.71	6,465.17	6,489.08	0.00	0.00	0.00	
12,500.00	90.13	89.55	7,281.52	618.50	6,565.16	6,588.97	0.00	0.00	0.00	
12,600.00	90.13	89.55	7,281.29	619.28	6,665.16	6,688.87	0.00	0.00	0.00	
12,700.00	90.13	89.55	7,281.07	620.06	6,765.16	6,788.76	0.00	0.00	0.00	
12,800.00	90.13	89.55	7,280.85	620.85	6,865.15	6,888.65	0.00	0.00	0.00	
12,900.00	90.13	89.55	7,280.62	621.63	6,965.15	6,988.55	0.00	0.00	0.00	
13,000.00	90.13	89.55	7,280.40	622.41	7,065.15	7,088.44	0.00	0.00	0.00	
13,100.00	90.13	89.55	7,280.18	623.19	7,165.14	7,188.33	0.00	0.00	0.00	
13,200.00	90.13	89.55	7,279.95	623.98	7,265.14	7,288.23	0.00	0.00	0.00	
13,300.00	90.13	89.55	7,279.73	624.76	7,365.14	7,388.12	0.00	0.00	0.00	
13,400.00	90.13	89.55	7,279.51	625.54	7,465.13	7,488.01	0.00	0.00	0.00	
13,500.00	90.13	89.55	7,279.28	626.33	7,565.13	7,587.90	0.00	0.00	0.00	
13,600.00	90.13	89.55	7,279.06	627.11	7,665.13	7,687.80	0.00	0.00	0.00	
13,700.00	90.13	89.55	7,278.84	627.89	7,765.12	7,787.69	0.00	0.00	0.00	
13,800.00	90.13	89.55	7,278.61	628.67	7,865.12	7,887.58	0.00	0.00	0.00	
13,900.00	90.13	89.55	7,278.39	629.46	7,965.12	7,987.48	0.00	0.00	0.00	
14,000.00	90.13	89.55	7,278.17	630.24	8,065.11	8,087.37	0.00	0.00	0.00	
14,100.00	90.13	89.55	7,277.94	631.02	8,165.11	8,187.26	0.00	0.00	0.00	
14,200.00	90.13	89.55	7,277.72	631.81	8,265.11	8,287.16	0.00	0.00	0.00	
14,300.00	90.13	89.55	7,277.50	632.59	8,365.10	8,387.05	0.00	0.00	0.00	
14,400.00	90.13	89.55	7,277.27	633.37	8,465.10	8,486.94	0.00	0.00	0.00	
14,500.00	90.13	89.55	7,277.05	634.15	8,565.10	8,586.84	0.00	0.00	0.00	
14,600.00	90.13	89.55	7,276.83	634.94	8,665.09	8,686.73	0.00	0.00	0.00	
14,700.00	90.13	89.55	7,276.60	635.72	8,765.09	8,786.62	0.00	0.00	0.00	
14,800.00	90.13	89.55	7,276.38	636.50	8,865.09	8,886.52	0.00	0.00	0.00	
14,900.00	90.13	89.55	7,276.16	637.29	8,965.08	8,986.41	0.00	0.00	0.00	
15,000.00	90.13	89.55	7,275.94	638.07	9,065.08	9,086.30	0.00	0.00	0.00	
15,100.00	90.13	89.55	7,275.71	638.85	9,165.08	9,186.20	0.00	0.00	0.00	

# Hewlett-Packard

## Planning Report

<b>Database:</b>	EDM 5000.14 Single User Db	<b>Local Co-ordinate Reference:</b>	Well VOLT 11C-3-L
<b>Company:</b>	SRC ENERGY	<b>TVD Reference:</b>	RKB = 4' @ 4819.00usft (IKON 12)
<b>Project:</b>	WELD COUNTY (NAD83, TRUE NORTH)	<b>MD Reference:</b>	RKB = 4' @ 4819.00usft (IKON 12)
<b>Site:</b>	5N-66W-05 VOLT 19-5 PAD	<b>North Reference:</b>	True
<b>Well:</b>	VOLT 11C-3-L	<b>Survey Calculation Method:</b>	Minimum Curvature
<b>Wellbore:</b>	Wellbore #1		
<b>Design:</b>	Design #1		

Planned Survey										
Measured Depth (usft)	Inclination (°)	Azimuth (°)	Vertical Depth (usft)	+N/-S (usft)	+E/-W (usft)	Vertical Section (usft)	Dogleg Rate (°/100usft)	Build Rate (°/100usft)	Turn Rate (°/100usft)	
15,200.00	90.13	89.55	7,275.49	639.63	9,265.07	9,286.09	0.00	0.00	0.00	
15,300.00	90.13	89.55	7,275.27	640.42	9,365.07	9,385.98	0.00	0.00	0.00	
15,400.00	90.13	89.55	7,275.04	641.20	9,465.07	9,485.88	0.00	0.00	0.00	
15,500.00	90.13	89.55	7,274.82	641.98	9,565.06	9,585.77	0.00	0.00	0.00	
15,600.00	90.13	89.55	7,274.60	642.77	9,665.06	9,685.66	0.00	0.00	0.00	
15,700.00	90.13	89.55	7,274.37	643.55	9,765.06	9,785.56	0.00	0.00	0.00	
15,800.00	90.13	89.55	7,274.15	644.33	9,865.05	9,885.45	0.00	0.00	0.00	
15,900.00	90.13	89.55	7,273.93	645.11	9,965.05	9,985.34	0.00	0.00	0.00	
16,000.00	90.13	89.55	7,273.70	645.90	10,065.05	10,085.24	0.00	0.00	0.00	
16,100.00	90.13	89.55	7,273.48	646.68	10,165.04	10,185.13	0.00	0.00	0.00	
16,200.00	90.13	89.55	7,273.26	647.46	10,265.04	10,285.02	0.00	0.00	0.00	
16,300.00	90.13	89.55	7,273.03	648.25	10,365.04	10,384.92	0.00	0.00	0.00	
16,400.00	90.13	89.55	7,272.81	649.03	10,465.03	10,484.81	0.00	0.00	0.00	
16,500.00	90.13	89.55	7,272.59	649.81	10,565.03	10,584.70	0.00	0.00	0.00	
16,600.00	90.13	89.55	7,272.36	650.59	10,665.03	10,684.60	0.00	0.00	0.00	
16,700.00	90.13	89.55	7,272.14	651.38	10,765.02	10,784.49	0.00	0.00	0.00	
16,800.00	90.13	89.55	7,271.92	652.16	10,865.02	10,884.38	0.00	0.00	0.00	
16,900.00	90.13	89.55	7,271.69	652.94	10,965.02	10,984.28	0.00	0.00	0.00	
17,000.00	90.13	89.55	7,271.47	653.73	11,065.01	11,084.17	0.00	0.00	0.00	
17,100.00	90.13	89.55	7,271.25	654.51	11,165.01	11,184.06	0.00	0.00	0.00	
17,200.00	90.13	89.55	7,271.02	655.29	11,265.01	11,283.95	0.00	0.00	0.00	
17,300.00	90.13	89.55	7,270.80	656.07	11,365.00	11,383.85	0.00	0.00	0.00	
17,400.00	90.13	89.55	7,270.58	656.86	11,465.00	11,483.74	0.00	0.00	0.00	
17,500.00	90.13	89.55	7,270.35	657.64	11,565.00	11,583.63	0.00	0.00	0.00	
17,600.00	90.13	89.55	7,270.13	658.42	11,664.99	11,683.53	0.00	0.00	0.00	
17,700.00	90.13	89.55	7,269.91	659.21	11,764.99	11,783.42	0.00	0.00	0.00	
17,800.00	90.13	89.55	7,269.68	659.99	11,864.99	11,883.31	0.00	0.00	0.00	
17,900.00	90.13	89.55	7,269.46	660.77	11,964.98	11,983.21	0.00	0.00	0.00	
18,000.00	90.13	89.55	7,269.24	661.55	12,064.98	12,083.10	0.00	0.00	0.00	
18,100.00	90.13	89.55	7,269.02	662.34	12,164.98	12,182.99	0.00	0.00	0.00	
18,106.76	90.13	89.55	7,269.00	662.39	12,171.74	12,189.74	0.00	0.00	0.00	
Bottom of Production @ 18106.76ft										
18,200.00	90.13	89.55	7,268.79	663.12	12,264.97	12,282.89	0.00	0.00	0.00	
18,206.76	90.13	89.55	7,268.78	663.17	12,271.73	12,289.64	0.00	0.00	0.00	
TD Well @ 18206.76ft										

Casing Points					
Measured Depth (usft)	Vertical Depth (usft)	Name	Casing Diameter (")	Hole Diameter (")	
1,825.79	1,800.00	9 5/8"	9-5/8	13-1/2	
7,801.64	7,292.00	Production Zone Top	5-1/2	8-1/2	



# Hewlett-Packard

## Planning Report

<b>Database:</b>	EDM 5000.14 Single User Db	<b>Local Co-ordinate Reference:</b>	Well VOLT 11C-3-L
<b>Company:</b>	SRC ENERGY	<b>TVD Reference:</b>	RKB = 4' @ 4819.00usft (IKON 12)
<b>Project:</b>	WELD COUNTY (NAD83, TRUE NORTH)	<b>MD Reference:</b>	RKB = 4' @ 4819.00usft (IKON 12)
<b>Site:</b>	5N-66W-05 VOLT 19-5 PAD	<b>North Reference:</b>	True
<b>Well:</b>	VOLT 11C-3-L	<b>Survey Calculation Method:</b>	Minimum Curvature
<b>Wellbore:</b>	Wellbore #1		
<b>Design:</b>	Design #1		

Plan Annotations				
Measured Depth (usft)	Vertical Depth (usft)	Local Coordinates		Comment
		+N/-S (usft)	+E/-W (usft)	
300.00	300.00	0.00	0.00	Begin Nudge @ 300.00ft
917.50	912.73	26.17	60.91	Hold Tangent @ 917.50ft
6,926.57	6,782.75	533.51	1,241.77	KOP @ 6926.57ft :: DLS = 9°/100'
7,801.64	7,292.00	581.71	1,866.96	End Build @ 7801.64ft
18,106.76	7,269.00	662.39	12,171.74	Bottom of Production @ 18106.76ft
18,206.76	7,268.78	663.17	12,271.73	TD Well @ 18206.76ft