



March 26, 2019

Mr. Mike Gardner
TEP Environmental Specialist
TEP Rocky Mountain, LLC
1058 County Road 215
Parachute, Colorado 81635

**RE: Status Report: Drill Pad KP 13-16 COGCC Rule 317B Post November/December 2018
DCPS Operations Water Quality Sampling, January 2019**

Dear Mr. Gardner,

Western Water and Land, Inc. (WWL) conducted field reconnaissance in support of surface water sampling for the TEP Rocky Mountain LLC (TEP) Drilling, Completion, Production, and Storage (DCPS) Operations associated with Drill Pad KP 13-16. This work was done in accordance with Colorado Oil and Gas Conservation Commission (COGCC) Rule 317B. DCPS Operations Drill Pad DCPS Operations Drill Pad KP 13-16 is located in the NW¼, SW¼, Section 16, Township 6 South, Range 91 West, 6th P.M. Drill Pad KP 13-16 falls within the Rule 317B half-mile buffer zone for the Silt Surface Water Supply Area (SSWSA). This status report addresses field activities, water chemistry results, and the quality control measures associated with the January 2019 sampling event for the November/December 2018 DCPS Operations at Drill Pad KP 13-16.

Workover operations were completed for the following wells:

Pad Name	Well Name	API	Start Date	End Date
KP 13-16	KP 23-16	05-045-17260	11/26/2018	11/27/2018

Previously established sampling locations for the SSWSA were provided to WWL by TEP. The sampling locations were established by HRL Compliance Solutions, Inc. (HCSI). Sampling locations downgradient of the referenced TEP DCPS Operations locations are shown in Figure 1. Sampling location KP 3 (COGCC Facility ID 752549) was chosen as the nearest downgradient sampling location to the referenced TEP DCPS Operations location.

SAMPLING LOCATIONS AND FIELD ACTIVITIES

Sampling location KP 3 was visited by WWL personnel on January 31, 2019. This location is in an ephemeral drainage immediately downgradient of a culvert under the access road. There was no flowing or standing water observed in the drainage. The next downgradient sampling location, K2, was not visited because TEP does not have property owner consent to access this location. Photographs from these field activities are included in Attachment A. As a result of these events, no samples were collected during the November/December 2018 DCPS Operations sampling event.

If you have any questions or concerns, please contact me at (970) 242-0170.

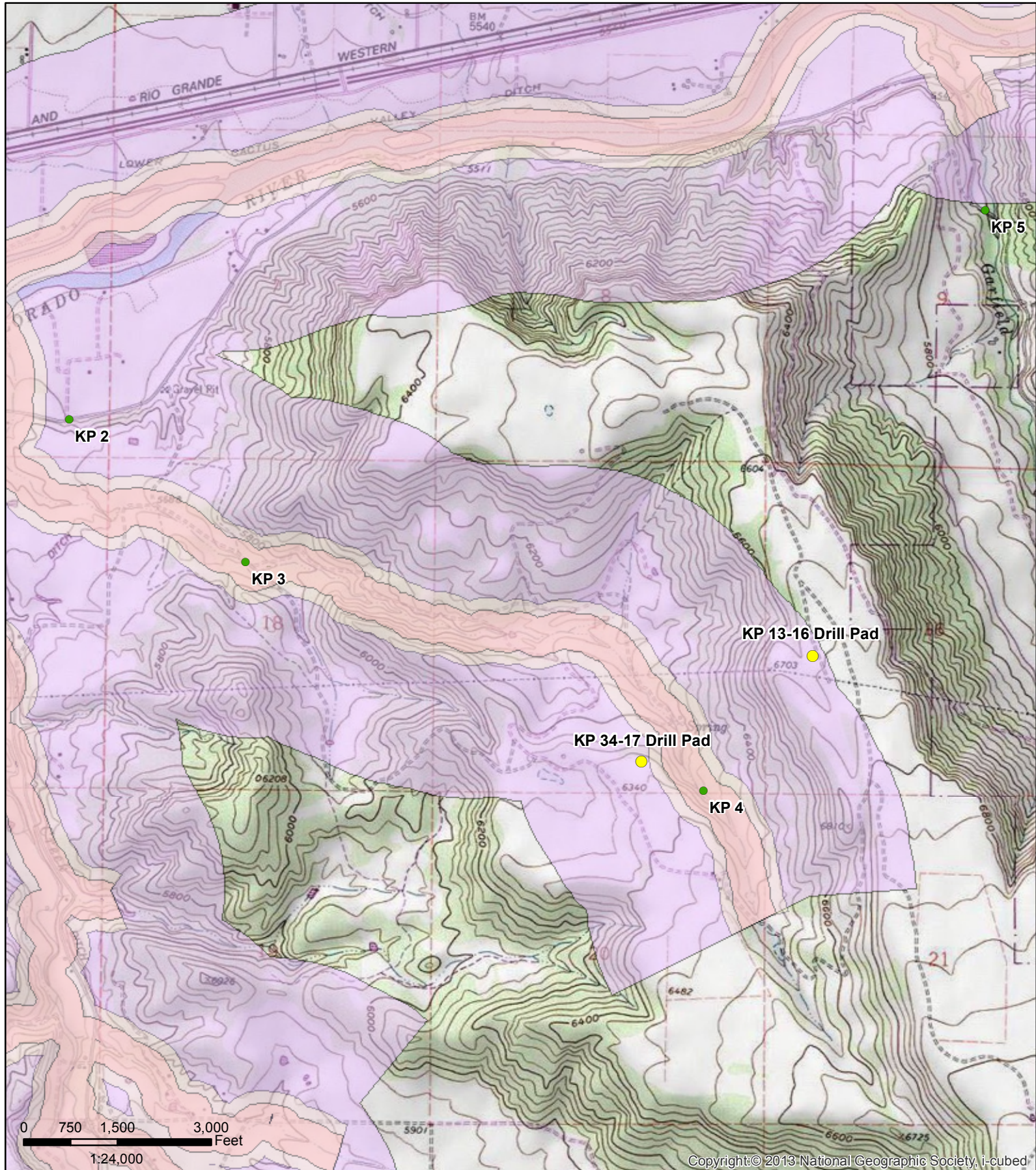
Sincerely,

A handwritten signature in black ink, appearing to read "Bruce D. Smith". The signature is fluid and cursive, with the first name "Bruce" being more legible than the last name "Smith".

Bruce D. Smith
Principal Hydrogeologist
WESTERN WATER & LAND, INC.

Attachments

Figure 1- Sampling Location Map
Attachment A - Photographs



Legend	
	300 Foot Buffer
	500 Foot Buffer
	Half-Mile Buffer
	Intake Diversion
	KP 34-17 & KP 13-16 Drill Pads
	Established Sample Sites
	Sampled Site

**Figure 1. KP 34-17 & KP 13-16 Drill Pads
Rule 317B Sampling Location Map
S 16 & 17, T6S, R91W, 6 PM**

Garfield County, Colorado
TEP Rocky Mountain, LLC



ATTACHMENT A

Photographs



Photo 1. Sampling location KP 3 (January 31, 2019)



Photo 2. Sampling location KP 3 (January 31, 2019)