



# **Ursa Operating Company, LLC**

**Rio Blanco County, Colorado**

**BR C-240**

**BR C-240 FED 21C-25-2-98**

**Wellbore #1**

**Design: Actual**

## **End of Well Report**

**26 January, 2019**

## Payzone Directional Service

### End of Well Report

<b>Company:</b>	Ursa Operating Company, LLC	<b>Local Co-ordinate Reference:</b>	Well BR C-240 FED 21C-25-2-98
<b>Project:</b>	Rio Blanco County, Colorado	<b>TVD Reference:</b>	BR C-240 FED 21C-25-2-98 @ 6325.5usft (EST KB)
<b>Site:</b>	BR C-240	<b>MD Reference:</b>	BR C-240 FED 21C-25-2-98 @ 6325.5usft (EST KB)
<b>Well:</b>	BR C-240 FED 21C-25-2-98	<b>North Reference:</b>	True
<b>Wellbore:</b>	Wellbore #1	<b>Survey Calculation Method:</b>	Minimum Curvature
<b>Design:</b>	Actual	<b>Database:</b>	EDM 5000.1 Single User Db

<b>Project</b>	Rio Blanco County, Colorado		
<b>Map System:</b>	US State Plane 1983	<b>System Datum:</b>	Mean Sea Level
<b>Geo Datum:</b>	North American Datum 1983		
<b>Map Zone:</b>	Colorado Northern Zone		Using geodetic scale factor

<b>Site</b>	BR C-240		
<b>Site Position:</b>		<b>Northing:</b>	1,203,233.71 usft
<b>From:</b>	Map	<b>Easting:</b>	2,203,189.00 usft
<b>Position Uncertainty:</b>	0.0 usft	<b>Slot Radius:</b>	13-3/16 "
		<b>Latitude:</b>	39.856238800
		<b>Longitude:</b>	-108.338695300
		<b>Grid Convergence:</b>	-1.83 °

Well		BR C-240 FED 21C-25-2-98, SHL: Lat 39.856134759 Long -108.338533254				
Well Position	+N/-S	0.0 usft	Northing:	1,203,194.37 usft	Latitude:	39.856134759
	+E/-W	0.0 usft	Easting:	2,203,233.26 usft	Longitude:	-108.338533254
Position Uncertainty		0.0 usft	Wellhead Elevation:	6,325.5 usft	Ground Level:	6,304.5 usft

<b>Wellbore</b>	Wellbore #1				
<b>Magnetics</b>	<b>Model Name</b>	<b>Sample Date</b>	<b>Declination (°)</b>	<b>Dip Angle (°)</b>	<b>Field Strength (nT)</b>
	IGRF2015	1/26/2019	9.73	65.79	51,496

<b>Design</b>	Actual			
<b>Audit Notes:</b>				
<b>Version:</b>	1.0	<b>Phase:</b>	ACTUAL	<b>Tie On Depth:</b> 0.0
<b>Vertical Section:</b>	<b>Depth From (TVD) (usft)</b>	<b>+N/-S (usft)</b>	<b>+E/-W (usft)</b>	<b>Direction (°)</b>
	0.0	0.0	0.0	234.46

<b>Survey Program</b>	<b>Date</b>	1/26/2019		
<b>From (usft)</b>	<b>To (usft)</b>	<b>Survey (Wellbore)</b>	<b>Tool Name</b>	<b>Description</b>
100.0	11,048.0	Actual (Wellbore #1)	MWD	MWD - Standard

# Payzone Directional Service

## End of Well Report

<b>Company:</b>	Ursa Operating Company, LLC	<b>Local Co-ordinate Reference:</b>	Well BR C-240 FED 21C-25-2-98
<b>Project:</b>	Rio Blanco County, Colorado	<b>TVD Reference:</b>	BR C-240 FED 21C-25-2-98 @ 6325.5usft (EST KB)
<b>Site:</b>	BR C-240	<b>MD Reference:</b>	BR C-240 FED 21C-25-2-98 @ 6325.5usft (EST KB)
<b>Well:</b>	BR C-240 FED 21C-25-2-98	<b>North Reference:</b>	True
<b>Wellbore:</b>	Wellbore #1	<b>Survey Calculation Method:</b>	Minimum Curvature
<b>Design:</b>	Actual	<b>Database:</b>	EDM 5000.1 Single User Db

Survey										
MD (usft)	Inc (°)	Azi (azimuth) (°)	TVD (usft)	V. Sec (usft)	N/S (usft)	E/W (usft)	DLeg (°/100usft)	Build (°/100usft)	Turn (°/100usft)	
0.0	0.00	0.00	0.0	0.0	0.0	0.0	0.00	0.00	0.00	
100.0	0.53	163.78	100.0	0.2	-0.4	0.1	0.53	0.53	0.00	
130.0	0.61	174.06	130.0	0.3	-0.7	0.2	0.43	0.27	34.27	
160.0	0.66	176.65	160.0	0.4	-1.1	0.2	0.19	0.17	8.63	
190.0	0.40	154.73	190.0	0.6	-1.3	0.3	1.08	-0.87	-73.07	
220.0	0.62	205.77	220.0	0.7	-1.6	0.2	1.61	0.73	170.13	
250.0	0.63	235.50	250.0	1.0	-1.8	0.0	1.07	0.03	99.10	
280.0	0.92	228.69	280.0	1.4	-2.1	-0.3	1.01	0.97	-22.70	
297.0	0.88	239.80	297.0	1.7	-2.2	-0.5	1.05	-0.24	65.35	
327.0	1.01	240.16	327.0	2.2	-2.5	-0.9	0.43	0.43	1.20	
358.0	1.36	246.31	358.0	2.8	-2.8	-1.5	1.20	1.13	19.84	
389.0	1.76	245.43	389.0	3.6	-3.1	-2.3	1.29	1.29	-2.84	
419.0	2.33	242.85	418.9	4.7	-3.6	-3.2	1.92	1.90	-8.60	
450.0	3.12	236.29	449.9	6.2	-4.3	-4.5	2.74	2.55	-21.16	
481.0	4.00	241.63	480.8	8.1	-5.3	-6.1	3.03	2.84	17.23	
511.0	4.79	242.84	510.8	10.4	-6.4	-8.2	2.65	2.63	4.03	
542.0	5.86	239.90	541.6	13.2	-7.8	-10.7	3.56	3.45	-9.48	
572.0	6.77	241.08	571.4	16.5	-9.4	-13.6	3.06	3.03	3.93	
602.0	7.65	238.27	601.2	20.3	-11.3	-16.8	3.16	2.93	-9.37	
633.0	8.70	237.36	631.9	24.7	-13.6	-20.6	3.41	3.39	-2.94	
663.0	9.49	238.00	661.5	29.4	-16.2	-24.6	2.65	2.63	2.13	
694.0	10.41	235.92	692.0	34.7	-19.1	-29.0	3.19	2.97	-6.71	
725.0	11.21	234.09	722.5	40.6	-22.4	-33.8	2.81	2.58	-5.90	
754.0	12.35	234.09	750.9	46.5	-25.9	-38.6	3.93	3.93	0.00	
785.0	13.32	235.01	781.1	53.4	-29.9	-44.2	3.20	3.13	2.97	
816.0	14.28	236.16	811.2	60.7	-34.1	-50.3	3.22	3.10	3.71	
846.0	15.07	237.17	840.2	68.3	-38.3	-56.7	2.77	2.63	3.37	

# Payzone Directional Service

## End of Well Report

<b>Company:</b>	Ursa Operating Company, LLC	<b>Local Co-ordinate Reference:</b>	Well BR C-240 FED 21C-25-2-98
<b>Project:</b>	Rio Blanco County, Colorado	<b>TVD Reference:</b>	BR C-240 FED 21C-25-2-98 @ 6325.5usft (EST KB)
<b>Site:</b>	BR C-240	<b>MD Reference:</b>	BR C-240 FED 21C-25-2-98 @ 6325.5usft (EST KB)
<b>Well:</b>	BR C-240 FED 21C-25-2-98	<b>North Reference:</b>	True
<b>Wellbore:</b>	Wellbore #1	<b>Survey Calculation Method:</b>	Minimum Curvature
<b>Design:</b>	Actual	<b>Database:</b>	EDM 5000.1 Single User Db

Survey									
MD (usft)	Inc (°)	Azi (azimuth) (°)	TVD (usft)	V. Sec (usft)	N/S (usft)	E/W (usft)	DLeg (°/100usft)	Build (°/100usft)	Turn (°/100usft)
876.0	15.69	235.50	869.2	76.3	-42.7	-63.3	2.54	2.07	-5.57
907.0	16.61	235.67	898.9	84.9	-47.5	-70.4	2.97	2.97	0.55
939.0	17.36	235.63	929.5	94.3	-52.8	-78.1	2.34	2.34	-0.12
970.0	18.11	234.97	959.1	103.7	-58.2	-85.9	2.50	2.42	-2.13
1,002.0	18.68	233.83	989.4	113.8	-64.1	-94.1	2.11	1.78	-3.56
1,034.0	19.33	234.03	1,019.7	124.2	-70.2	-102.5	2.04	2.03	0.62
1,065.0	20.17	233.52	1,048.9	134.7	-76.4	-111.0	2.77	2.71	-1.65
1,097.0	20.96	232.82	1,078.8	145.9	-83.1	-120.0	2.59	2.47	-2.19
1,128.0	21.58	232.25	1,107.7	157.2	-90.0	-128.9	2.11	2.00	-1.84
1,160.0	22.19	231.67	1,137.4	169.1	-97.3	-138.3	2.02	1.91	-1.81
1,192.0	23.20	231.59	1,166.9	181.4	-105.0	-148.0	3.16	3.16	-0.25
1,223.0	24.04	231.32	1,195.3	193.8	-112.7	-157.7	2.73	2.71	-0.87
1,255.0	24.35	231.72	1,224.5	206.9	-120.9	-167.9	1.10	0.97	1.25
1,286.0	24.57	231.54	1,252.7	219.7	-128.9	-178.0	0.75	0.71	-0.58
1,318.0	24.87	233.26	1,281.8	233.1	-137.0	-188.6	2.44	0.94	5.37
1,350.0	25.20	233.20	1,310.8	246.7	-145.1	-199.5	1.03	1.03	-0.19
1,445.0	27.28	237.22	1,396.0	288.6	-169.0	-234.0	2.88	2.19	4.23
1,539.0	28.84	237.05	1,479.0	332.8	-193.0	-271.1	1.66	1.66	-0.18
1,634.0	29.59	235.54	1,561.9	379.1	-218.8	-309.7	1.11	0.79	-1.59
1,729.0	29.36	232.51	1,644.6	425.9	-246.2	-347.5	1.59	-0.24	-3.19
1,824.0	27.03	230.22	1,728.3	470.7	-274.2	-382.6	2.70	-2.45	-2.41
1,919.0	26.28	231.54	1,813.2	513.2	-301.1	-415.6	1.01	-0.79	1.39
2,014.0	26.02	232.99	1,898.5	555.0	-326.7	-448.7	0.73	-0.27	1.53
2,109.0	27.16	232.86	1,983.4	597.5	-352.4	-482.6	1.20	1.20	-0.14
2,203.0	26.31	233.05	2,067.4	639.8	-377.8	-516.4	0.91	-0.90	0.20
2,298.0	27.60	233.43	2,152.1	682.9	-403.6	-550.9	1.37	1.36	0.40
2,393.0	26.91	234.14	2,236.5	726.4	-429.3	-586.0	0.80	-0.73	0.75

## Payzone Directional Service

### End of Well Report

<b>Company:</b>	Ursa Operating Company, LLC	<b>Local Co-ordinate Reference:</b>	Well BR C-240 FED 21C-25-2-98
<b>Project:</b>	Rio Blanco County, Colorado	<b>TVD Reference:</b>	BR C-240 FED 21C-25-2-98 @ 6325.5usft (EST KB)
<b>Site:</b>	BR C-240	<b>MD Reference:</b>	BR C-240 FED 21C-25-2-98 @ 6325.5usft (EST KB)
<b>Well:</b>	BR C-240 FED 21C-25-2-98	<b>North Reference:</b>	True
<b>Wellbore:</b>	Wellbore #1	<b>Survey Calculation Method:</b>	Minimum Curvature
<b>Design:</b>	Actual	<b>Database:</b>	EDM 5000.1 Single User Db

Survey										
MD (usft)	Inc (°)	Azi (azimuth) (°)	TVD (usft)	V. Sec (usft)	N/S (usft)	E/W (usft)	DLeg (°/100usft)	Build (°/100usft)	Turn (°/100usft)	
2,488.0	26.10	234.97	2,321.5	768.8	-453.9	-620.5	0.94	-0.85	0.87	
2,583.0	27.47	236.82	2,406.3	811.6	-477.9	-656.0	1.69	1.44	1.95	
2,678.0	28.30	236.42	2,490.3	856.0	-502.3	-693.1	0.90	0.87	-0.42	
2,773.0	27.73	235.19	2,574.2	900.6	-527.4	-730.0	0.85	-0.60	-1.29	
2,867.0	26.32	234.62	2,657.9	943.3	-552.0	-764.9	1.53	-1.50	-0.61	
2,962.0	24.50	234.30	2,743.7	984.0	-575.6	-798.1	1.92	-1.92	-0.34	
3,057.0	24.87	234.49	2,830.0	1,023.7	-598.7	-830.4	0.40	0.39	0.20	
3,152.0	25.93	235.19	2,915.9	1,064.5	-622.2	-863.7	1.16	1.12	0.74	
3,247.0	27.11	237.12	3,000.9	1,106.9	-645.8	-898.9	1.54	1.24	2.03	
3,341.0	28.52	237.83	3,084.0	1,150.6	-669.4	-935.9	1.54	1.50	0.76	
3,436.0	28.87	237.74	3,167.3	1,196.2	-693.7	-974.5	0.37	0.37	-0.09	
3,531.0	30.33	237.80	3,249.9	1,243.0	-718.7	-1,014.2	1.54	1.54	0.06	
3,626.0	30.37	236.90	3,331.9	1,291.0	-744.6	-1,054.6	0.48	0.04	-0.95	
3,721.0	28.52	233.26	3,414.6	1,337.6	-771.3	-1,092.9	2.71	-1.95	-3.83	
3,780.0	29.09	232.33	3,466.3	1,366.1	-788.5	-1,115.5	1.23	0.97	-1.58	
Last PZD Surface Survey										
3,833.0	29.54	234.75	3,512.6	1,392.0	-803.9	-1,136.4	2.39	0.85	4.57	
3,896.0	26.68	233.26	3,568.1	1,421.7	-821.3	-1,160.4	4.67	-4.54	-2.37	
3,990.0	26.07	230.00	3,652.3	1,463.4	-847.2	-1,193.2	1.67	-0.65	-3.47	
4,085.0	25.63	227.19	3,737.8	1,504.6	-874.6	-1,224.2	1.37	-0.46	-2.96	
4,179.0	26.33	224.38	3,822.3	1,545.3	-903.3	-1,253.7	1.51	0.74	-2.99	
4,274.0	27.65	227.46	3,907.0	1,587.9	-933.3	-1,284.7	2.02	1.39	3.24	
4,368.0	27.65	231.59	3,990.3	1,631.3	-961.6	-1,317.9	2.04	0.00	4.39	
4,463.0	27.16	234.49	4,074.6	1,675.0	-987.9	-1,352.8	1.50	-0.52	3.05	
4,557.0	27.53	233.17	4,158.1	1,718.2	-1,013.4	-1,387.7	0.76	0.39	-1.40	
4,652.0	27.56	232.20	4,242.3	1,762.1	-1,040.0	-1,422.6	0.47	0.03	-1.02	
4,746.0	27.47	231.23	4,325.7	1,805.5	-1,066.9	-1,456.7	0.49	-0.10	-1.03	

<b>Company:</b>	Ursa Operating Company, LLC	<b>Local Co-ordinate Reference:</b>	Well BR C-240 FED 21C-25-2-98
<b>Project:</b>	Rio Blanco County, Colorado	<b>TVD Reference:</b>	BR C-240 FED 21C-25-2-98 @ 6325.5usft (EST KB)
<b>Site:</b>	BR C-240	<b>MD Reference:</b>	BR C-240 FED 21C-25-2-98 @ 6325.5usft (EST KB)
<b>Well:</b>	BR C-240 FED 21C-25-2-98	<b>North Reference:</b>	True
<b>Wellbore:</b>	Wellbore #1	<b>Survey Calculation Method:</b>	Minimum Curvature
<b>Design:</b>	Actual	<b>Database:</b>	EDM 5000.1 Single User Db

Survey										
MD (usft)	Inc (°)	Azi (azimuth) (°)	TVD (usft)	V. Sec (usft)	N/S (usft)	E/W (usft)	DLeg (°/100usft)	Build (°/100usft)	Turn (°/100usft)	
4,841.0	27.16	235.23	4,410.1	1,849.0	-1,093.0	-1,491.6	1.96	-0.33	4.21	
4,935.0	27.34	239.58	4,493.7	1,892.0	-1,116.2	-1,527.8	2.13	0.19	4.63	
5,030.0	27.60	239.94	4,578.0	1,935.6	-1,138.2	-1,565.7	0.32	0.27	0.38	
5,124.0	27.34	236.68	4,661.4	1,978.9	-1,161.0	-1,602.6	1.62	-0.28	-3.47	
5,218.0	27.52	234.66	4,744.8	2,022.2	-1,185.4	-1,638.3	1.01	0.19	-2.15	
5,313.0	27.47	233.70	4,829.1	2,066.0	-1,211.1	-1,673.9	0.47	-0.05	-1.01	
5,407.0	27.43	231.76	4,912.5	2,109.3	-1,237.3	-1,708.4	0.95	-0.04	-2.06	
5,502.0	27.74	234.13	4,996.7	2,153.3	-1,263.8	-1,743.5	1.20	0.33	2.49	
5,597.0	27.25	238.88	5,081.0	2,197.1	-1,288.0	-1,780.0	2.36	-0.52	5.00	
5,691.0	25.49	238.97	5,165.2	2,238.7	-1,309.6	-1,815.8	1.87	-1.87	0.10	
5,786.0	24.40	237.30	5,251.4	2,278.7	-1,330.7	-1,849.8	1.37	-1.15	-1.76	
5,880.0	23.30	236.51	5,337.3	2,316.7	-1,351.5	-1,881.6	1.22	-1.17	-0.84	
5,975.0	22.37	236.60	5,424.9	2,353.5	-1,371.8	-1,912.4	0.98	-0.98	0.09	
6,069.0	20.35	235.01	5,512.4	2,387.7	-1,391.0	-1,940.7	2.24	-2.15	-1.69	
6,164.0	19.08	234.49	5,601.8	2,419.8	-1,409.5	-1,966.9	1.35	-1.34	-0.55	
6,259.0	17.49	233.17	5,692.0	2,449.6	-1,427.1	-1,991.0	1.73	-1.67	-1.39	
6,311.9	16.88	232.74	5,742.6	2,465.2	-1,436.5	-2,003.4	1.19	-1.16	-0.82	
21C-25-2-98 TGT										
6,353.0	16.40	232.38	5,782.0	2,477.0	-1,443.6	-2,012.8	1.19	-1.16	-0.87	
6,448.0	15.34	231.67	5,873.3	2,502.9	-1,459.6	-2,033.3	1.13	-1.12	-0.75	
6,543.0	14.55	230.53	5,965.1	2,527.4	-1,475.0	-2,052.3	0.89	-0.83	-1.20	
6,637.0	10.59	241.43	6,056.9	2,547.7	-1,486.6	-2,069.0	4.89	-4.21	11.60	
6,732.0	6.95	254.79	6,150.8	2,561.8	-1,492.3	-2,082.3	4.37	-3.83	14.06	
6,789.6	6.59	253.33	6,208.0	2,568.2	-1,494.2	-2,088.8	0.69	-0.62	-2.53	
21C-25-2-98 VP										
6,826.0	6.37	252.33	6,244.1	2,572.1	-1,495.4	-2,092.7	0.69	-0.61	-2.76	
6,921.0	5.80	251.71	6,338.6	2,581.7	-1,498.5	-2,102.3	0.60	-0.60	-0.65	

## Payzone Directional Service

### End of Well Report

<b>Company:</b>	Ursa Operating Company, LLC	<b>Local Co-ordinate Reference:</b>	Well BR C-240 FED 21C-25-2-98
<b>Project:</b>	Rio Blanco County, Colorado	<b>TVD Reference:</b>	BR C-240 FED 21C-25-2-98 @ 6325.5usft (EST KB)
<b>Site:</b>	BR C-240	<b>MD Reference:</b>	BR C-240 FED 21C-25-2-98 @ 6325.5usft (EST KB)
<b>Well:</b>	BR C-240 FED 21C-25-2-98	<b>North Reference:</b>	True
<b>Wellbore:</b>	Wellbore #1	<b>Survey Calculation Method:</b>	Minimum Curvature
<b>Design:</b>	Actual	<b>Database:</b>	EDM 5000.1 Single User Db

Survey										
MD (usft)	Inc (°)	Azi (azimuth) (°)	TVD (usft)	V. Sec (usft)	N/S (usft)	E/W (usft)	DLeg (°/100usft)	Build (°/100usft)	Turn (°/100usft)	
7,015.0	1.71	204.87	6,432.4	2,587.5	-1,501.3	-2,107.4	5.10	-4.35	-49.83	
7,110.0	2.86	115.22	6,527.3	2,587.5	-1,503.6	-2,105.8	3.50	1.21	-94.37	
7,204.0	3.30	115.13	6,621.2	2,585.1	-1,505.7	-2,101.3	0.47	0.47	-0.10	
7,299.0	2.37	111.62	6,716.1	2,582.7	-1,507.6	-2,097.0	1.00	-0.98	-3.69	
7,393.0	1.49	106.43	6,810.0	2,580.9	-1,508.7	-2,094.0	0.95	-0.94	-5.52	
7,488.0	0.79	115.57	6,905.0	2,579.8	-1,509.3	-2,092.2	0.76	-0.74	9.62	
7,582.0	0.79	172.52	6,999.0	2,579.8	-1,510.2	-2,091.6	0.80	0.00	60.59	
7,677.0	0.92	195.81	7,094.0	2,580.7	-1,511.6	-2,091.7	0.39	0.14	24.52	
7,771.0	1.23	309.54	7,188.0	2,581.5	-1,511.7	-2,092.7	1.92	0.33	120.99	
7,866.0	2.29	333.98	7,282.9	2,581.5	-1,509.3	-2,094.3	1.34	1.12	25.73	
7,961.0	1.98	0.52	7,377.9	2,580.2	-1,506.0	-2,095.1	1.08	-0.33	27.94	
8,055.0	3.38	39.19	7,471.8	2,576.6	-1,502.2	-2,093.3	2.35	1.49	41.14	
8,150.0	5.10	49.13	7,566.5	2,569.7	-1,497.3	-2,088.4	1.96	1.81	10.46	
8,245.0	5.41	52.46	7,661.1	2,561.0	-1,491.8	-2,081.6	0.46	0.33	3.51	
8,339.0	2.11	63.19	7,754.9	2,554.8	-1,488.3	-2,076.6	3.57	-3.51	11.41	
8,434.0	0.48	55.98	7,849.9	2,552.7	-1,487.3	-2,074.7	1.72	-1.72	-7.59	
8,528.0	0.84	347.16	7,943.9	2,552.0	-1,486.4	-2,074.5	0.85	0.38	-73.21	
8,623.0	1.10	323.61	8,038.8	2,551.8	-1,485.0	-2,075.2	0.50	0.27	-24.79	
8,718.0	0.92	269.03	8,133.8	2,552.4	-1,484.3	-2,076.5	0.99	-0.19	-57.45	
8,813.0	1.36	256.72	8,228.8	2,554.1	-1,484.5	-2,078.4	0.53	0.46	-12.96	
8,907.0	1.10	269.55	8,322.8	2,555.9	-1,484.8	-2,080.3	0.40	-0.28	13.65	
9,002.0	1.27	256.90	8,417.8	2,557.6	-1,485.1	-2,082.3	0.33	0.18	-13.32	
9,097.0	1.41	254.26	8,512.7	2,559.7	-1,485.6	-2,084.4	0.16	0.15	-2.78	
9,191.0	1.41	246.44	8,606.7	2,561.9	-1,486.4	-2,086.6	0.20	0.00	-8.32	
9,286.0	1.49	250.66	8,701.7	2,564.2	-1,487.3	-2,088.8	0.14	0.08	4.44	
9,381.0	1.23	288.36	8,796.7	2,566.0	-1,487.4	-2,091.0	0.96	-0.27	39.68	
9,475.0	1.89	322.64	8,890.6	2,566.6	-1,485.8	-2,092.9	1.19	0.70	36.47	

<b>Company:</b>	Ursa Operating Company, LLC	<b>Local Co-ordinate Reference:</b>	Well BR C-240 FED 21C-25-2-98
<b>Project:</b>	Rio Blanco County, Colorado	<b>TVD Reference:</b>	BR C-240 FED 21C-25-2-98 @ 6325.5usft (EST KB)
<b>Site:</b>	BR C-240	<b>MD Reference:</b>	BR C-240 FED 21C-25-2-98 @ 6325.5usft (EST KB)
<b>Well:</b>	BR C-240 FED 21C-25-2-98	<b>North Reference:</b>	True
<b>Wellbore:</b>	Wellbore #1	<b>Survey Calculation Method:</b>	Minimum Curvature
<b>Design:</b>	Actual	<b>Database:</b>	EDM 5000.1 Single User Db

Survey										
MD (usft)	Inc (°)	Azi (azimuth) (°)	TVD (usft)	V. Sec (usft)	N/S (usft)	E/W (usft)	DLeg (°/100usft)	Build (°/100usft)	Turn (°/100usft)	
9,570.0	1.76	312.27	8,985.6	2,567.0	-1,483.6	-2,094.9	0.37	-0.14	-10.92	
9,663.0	1.93	275.36	9,078.5	2,568.5	-1,482.5	-2,097.5	1.27	0.18	-39.69	
9,758.0	2.55	270.35	9,173.5	2,571.4	-1,482.3	-2,101.2	0.68	0.65	-5.27	
9,849.0	3.03	254.70	9,264.4	2,575.3	-1,482.9	-2,105.6	0.98	0.53	-17.20	
9,944.0	2.51	208.82	9,359.3	2,579.5	-1,485.4	-2,109.0	2.33	-0.55	-48.29	
10,038.0	3.52	157.76	9,453.1	2,582.1	-1,489.9	-2,108.9	2.93	1.07	-54.32	
10,133.0	2.86	157.32	9,548.0	2,583.3	-1,494.8	-2,106.9	0.70	-0.69	-0.46	
10,227.0	2.24	166.72	9,641.9	2,584.5	-1,498.7	-2,105.6	0.79	-0.66	10.00	
10,322.0	1.93	146.07	9,736.8	2,585.2	-1,501.9	-2,104.2	0.85	-0.33	-21.74	
10,417.0	2.24	108.36	9,831.8	2,584.2	-1,503.8	-2,101.6	1.45	0.33	-39.69	
10,512.0	1.58	93.90	9,926.7	2,582.1	-1,504.4	-2,098.5	0.85	-0.69	-15.22	
10,607.0	0.31	83.23	10,021.7	2,580.8	-1,504.5	-2,096.9	1.34	-1.34	-11.23	
10,702.0	0.44	310.69	10,116.7	2,580.7	-1,504.2	-2,097.0	0.72	0.14	-139.52	
10,796.0	1.10	261.64	10,210.7	2,581.6	-1,504.1	-2,098.1	0.93	0.70	-52.18	
10,891.0	2.07	254.17	10,305.7	2,584.0	-1,504.7	-2,100.7	1.04	1.02	-7.86	
10,986.0	2.68	261.91	10,400.6	2,587.6	-1,505.5	-2,104.5	0.72	0.64	8.15	
Last PZD Survey										
11,048.0	2.68	261.91	10,462.5	2,590.2	-1,505.9	-2,107.4	0.00	0.00	0.00	
Straightline Projection to TD										

Design Annotations					
Measured Depth (usft)	Vertical Depth (usft)	Local Coordinates		Comment	
		+N/-S (usft)	+E/-W (usft)		
3,780.0	3,466.3	-788.5	-1,115.5	Last PZD Surface Survey	
10,986.0	10,400.6	-1,505.5	-2,104.5	Last PZD Survey	
11,048.0	10,462.5	-1,505.9	-2,107.4	Straightline Projection to TD	





## Payzone Directional Service

### End of Well Report

**Company:** Ursa Operating Company, LLC  
**Project:** Rio Blanco County, Colorado  
**Site:** BR C-240  
**Well:** BR C-240 FED 21C-25-2-98  
**Wellbore:** Wellbore #1  
**Design:** Actual

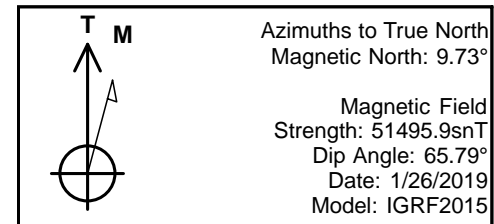
**Local Co-ordinate Reference:**  
**TVD Reference:**  
**MD Reference:**  
**North Reference:**  
**Survey Calculation Method:**  
**Database:**

Well BR C-240 FED 21C-25-2-98  
BR C-240 FED 21C-25-2-98 @ 6325.5usft (EST KB)  
BR C-240 FED 21C-25-2-98 @ 6325.5usft (EST KB)  
True  
Minimum Curvature  
EDM 5000.1 Single User Db

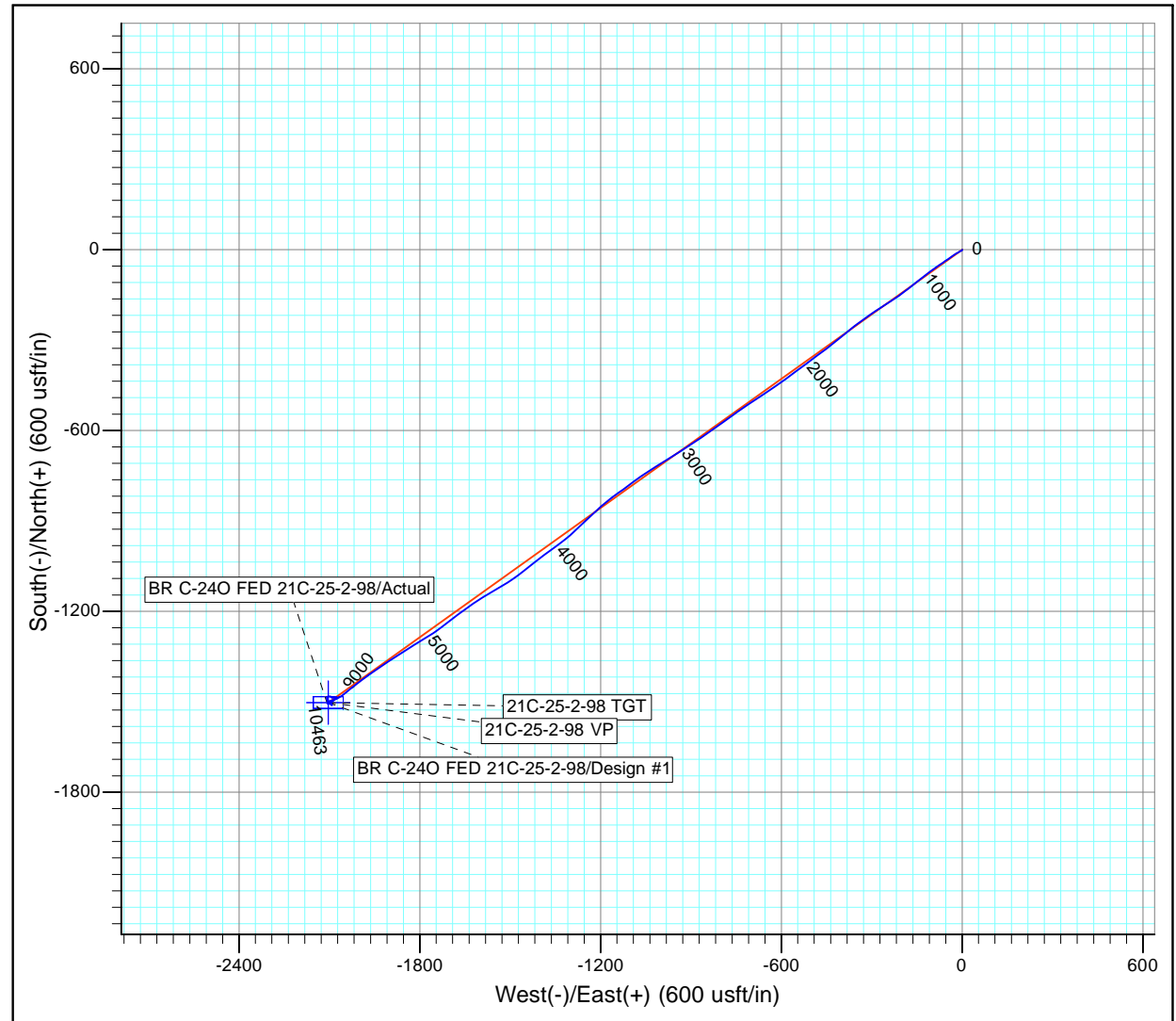
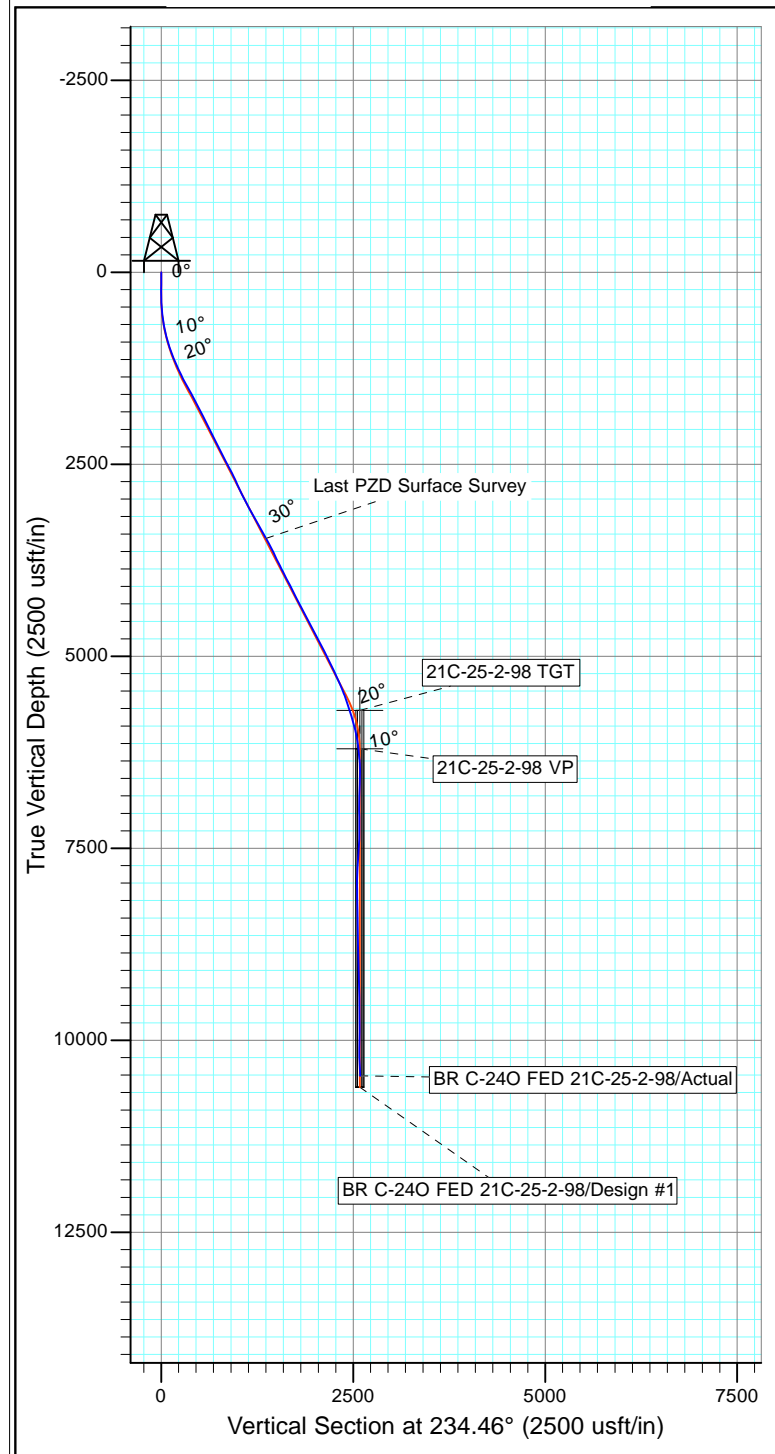
Checked By: \_\_\_\_\_ Approved By: \_\_\_\_\_ Date: \_\_\_\_\_



Project: Rio Blanco County, Colorado  
Site: BR C-240  
Well: BR C-240 FED 21C-25-2-98  
Wellbore: Wellbore #1  
Design: Actual



Azimuths to True North  
Magnetic North: 9.73°  
  
Magnetic Field  
Strength: 51495.9snT  
Dip Angle: 65.79°  
Date: 1/26/2019  
Model: IGRF2015



Design: Actual (BR C-240 FED 21C-25-2-98/Wellbore #1)

Created By: Derek Stephens Date: 8:03, January 26 2019

THIS SURVEY IS CORRECT TO THE BEST OF  
MY KNOWLEDGE AND IS SUPPORTED  
BY ACTUAL FIELD DATA