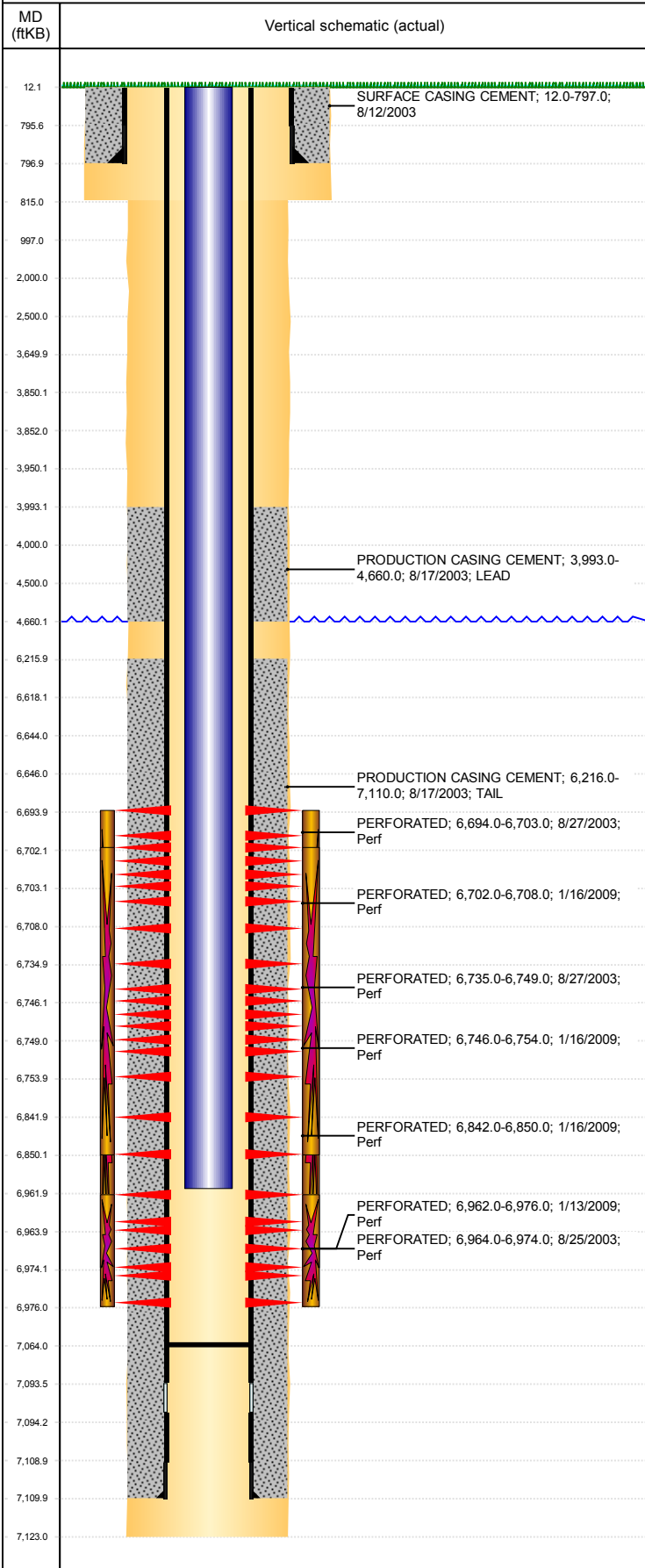


Well Name: LDS 20-8

VERTICAL, ORIGINAL HOLE, 4/9/2019 11:57:54 AM



Well Header	
API 05-123-21605	Business Unit DJ BASIN
District 15	Well Config VERTICAL
KB - GL / MSL (ft...) 12.00	Spud Date 8/12/2003
P & A Date	Well Production Status PR
SoRT No	
Comment LIMITED ENTRY	
Surface Location (Congressional)	
Qtr 3 SE	Qtr 4 SE
Section 8	Townshp 3
Range 64	Rng E/W W
Actual Latitude (°) 40.23613100	Actual Longitude (°) -104.57014200
Wellbore Sections	
Section Des	Size (in)
SURFACE	12 1/4
PRODUCTION	7 7/8
Act Top, MD (ftKB)	Act Btm, MD (ftKB)
12	815
815	7,123
Casing Strings	
Csg Des	Run Date
Surface	8/12/2003
Production	8/17/2003
OD (in)	Wt/Len (lb/ft)
8 5/8	24.00
4 1/2	11.60
Grade	Top, MD (ftKB)
J-55	12.0
I-80	12.0
MD (ftKB)	
797.0	7,110.0
Cement	
Des	Start Date
SURFACE CASING CEMENT	8/12/2003
PRODUCTION CASING CEMENT	8/17/2003
PRODUCTION CASING CEMENT	8/17/2003
Top (ftKB)	Btm (ftKB)
12.0	797.0
3,993.0	4,660.0
6,216.0	7,110.0
Zone Statuses	
Zone Name	Status Date
NIOBRARA	11/4/2016
NIOBRARA	3/22/2017
CODELL	1/21/2009
CODELL	12/2/2013
Status	Fluid Type
PR	
SI	
PR	Water
PR	
Job	Prod Method
RE-FRAC, 12/10/2008 00:00	Flowing
	Flowing
Perforation Data	
Linked Zone	Bnch/Stg
NIOBRARA, ORIGINAL HOLE	A
NIOBRARA, ORIGINAL HOLE	A
NIOBRARA, ORIGINAL HOLE	B
NIOBRARA, ORIGINAL HOLE	B
NIOBRARA, ORIGINAL HOLE	C
CODELL, ORIGINAL HOLE	
CODELL, ORIGINAL HOLE	
Entered Shot Total	Top (ftKB)
2	6,694.00
12	6,702.00
3	6,735.00
24	6,746.00
24	6,842.00
56	6,962.00
10	6,964.00
Btm (ftKB)	Date
6,703.00	8/27/2003
6,708.00	1/16/2009
6,749.00	8/27/2003
6,754.00	1/16/2009
6,850.00	1/16/2009
6,976.00	1/13/2009
6,974.00	8/25/2003
Stimulation Intervals	
Zone	Start Date
NIOBRARA-CODELL, ORIGINAL HOLE	9/17/2003
NIOBRARA, ORIGINAL HOLE	1/16/2009
CODELL, ORIGINAL HOLE	1/16/2009
Top (ftKB)	Btm (ftKB)
6,694.0	6,974.0
6,702.0	6,850.0
6,962.0	6,976.0
Other In Hole	
Run Date	Des
OD (in)	Top (ftKB)
Btm (ftKB)	
Logs	
Date	Type
8/16/2003	COMPENSATED NEUTRON
8/16/2003	INDUCTION
8/22/2003	CEMENT BOND
9/10/2003	CEMENT BOND
Top, MD (ftKB)	Btm, MD (ftKB)
804.0	7,105.0
804.0	7,115.0
6,000.0	7,084.0
3,100.0	4,700.0
Plug Back Total Depths	
Date	Type
8/22/2003	FILL
1/30/2009	FILL
Com	Depth (ftKB)
DEPTH LOGGER ON CBL	7,103.0
	7,064.0