



Service Order #: 73284

Date: 26-Feb-19

Well Name	Location	County	St	API#		
MAYER 16-16		WELD	CO	05-123-22942		
Formation	Cement Via	Type Of Service	Well Type	Age	AFE#	PO#
	TUBING	PLUG		REWORK		

Customer: ANADARKO

Remarks: TEST H2O PH 7.9, PPM 883, TEMP 54.1
SAFETY MEETING
25 SKS, 6.8 BBLS
TOC 7150' - 6750'

Customer Rep: J. CASTILLO

PH:

WELLBORE DATA				
Type	Size	Weight	Depth	Volume
Surface Casing:				
Production Casing:	4.500	11.6	7,150.0	
Intermediate:				
Drill Pipe:				
Tubing:	2.375	4.7	7,150.0	

Type	Size	Depth (Top)	Depth (Bot)	Volume
Liner:				
Open Hole:				

OTHER DATA		
BHT	Max PSI	Total Depth

Packer or RetainerType / Depth:

--	--

Perf Depths:	#	Total
	0	0
	0	
	0	

TIME	PUMP RATES		DENSITY (lb/gl)	PRESS (psi)	STG TOT (bbls)	TOTAL (bbls)	REMARKS
	WATER (gpm)	PUMP (bpm)					
11:56	0	3.6	6.88	71	1.0	1.0	PRIME UP
11:58	71	0.0	6.88	904	0.1	0.1	LOW PSI KICK OUT TEST
11:58	71	0.0	6.88	1,658	0.1	0.1	HIGH PSI KICK OUT TEST
11:59	0	0.0	6.88	58	0.0	0.0	H2O SPACER
12:05	8	0.6	16.58	64	3.8	3.8	GOT CIRCULATION / START CMT
12:09	0	2.0	15.16	142	6.8	10.6	END CMT / START DISPLACEMENT
12:22	0	0.0	6.88	23	24.5	35.2	OFF LINE

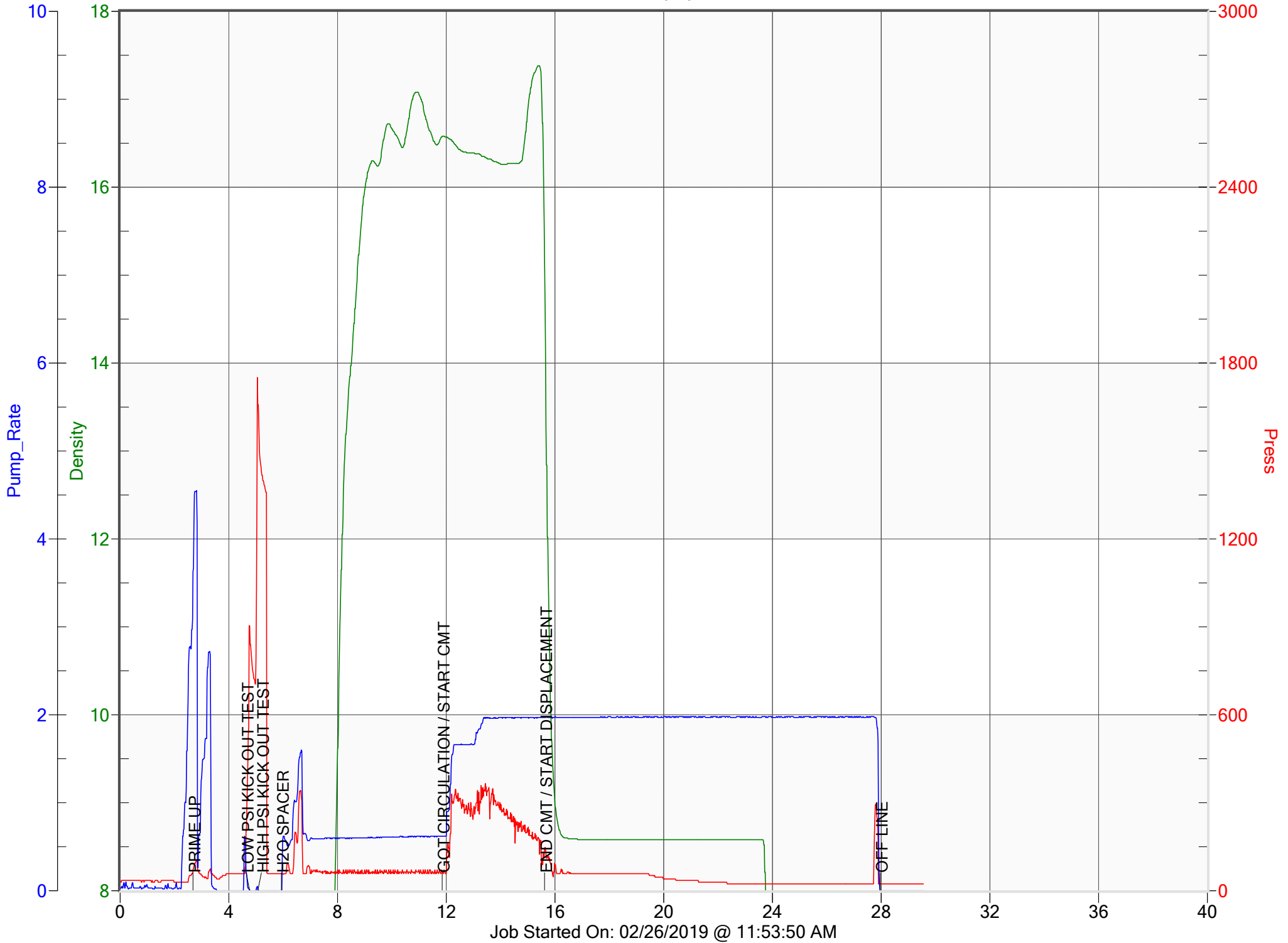
Summary

Max Fl. Rate	Avg Fl. Rate	Max Psi	Avg Psi
3.6	1.5	1,751	84

Customer Acknowledgement:	Service Rating:	Cementer:	PRODUCTS USED
	<input type="checkbox"/> Satisfactory <input type="checkbox"/> Unsatisfactory	BOHLEN	CLASS G CMT W/ENHANCERS 1.53 YEILD, 15.8 LBS/GAL

ANADARKO

MAYER 16-16



Job Started On: 02/26/2019 @ 11:53:50 AM



Service Order #: 73285

Date: 27-Feb-19

Well Name	Location	County	St	API#		
MAYER STATE 16-16		WELD	CO	05-123-22942		
Formation	Cement Via	Type Of Service	Well Type	Age	AFE#	PO#
	TUBING	PLUG		REWORK		

Customer: ANADARKO

Remarks: TEST H2O
SAFETY MEETING
300 SKS, 84.4 BBLS
TOC 1516'-650'

Customer Rep: J. CASTILLO PH:

WELLBORE DATA				
Type	Size	Weight	Depth	Volume
Surface Casing:	8.625	24.0	858.0	
Production Casing:	4.500	11.6	1,416.0	
Intermediate:				
Drill Pipe:				
Tubing:	2.375	4.7	1,516.0	

Type	Size	Depth (Top)	Depth (Bot)	Volume
Liner:				
Open Hole:	7.875	858.0	1,416.0	

OTHER DATA		
BHT	Max PSI	Total Depth

Packer or RetainerType / Depth:

--	--

Perf Depths:	#	Total
	0	0
	0	
	0	

TIME	PUMP RATES		DENSITY	PRESS	STG TOT	TOTAL	REMARKS
	WATER (gpm)	PUMP (bpm)	(lb/gal)	(psi)	(bbls)	(bbls)	
13:27	0	0.1	6.88	1,804	34.1	44.7	PSI KICK OUT TEST
13:28	0	0.1	6.88	40	0.0	0.0	MUD FLUSH
13:34	47	2.0	14.29	255	10.0	10.0	END MUD FLUSH / START H2O SPACER
13:37	0	2.2	14.26	297	5.1	15.2	END SPACER / START CMT
14:11	66	2.5	14.23	252	84.3	99.6	END CMT / START DISPLACEMENT
14:14	0	0.0	19.57	46	1.5	107.6	OFF LINE

Summary

Max Fl. Rate	Avg Fl. Rate	Max Psi	Avg Psi
2.5	2.3	1,804	166

Customer Acknowledgement:	Service Rating:	Cementer:	PRODUCTS USED
	<input type="checkbox"/> Satisfactory <input type="checkbox"/> Unsatisfactory	BOHLEN	CLASS G CMT W/ENHANCERS 1.58 YEILD, 14 LBS/GAL



Service Order #: 73286

Date: 28-Feb-19

Well Name	Location	County	St	API#		
MAYER STATE 16-16		WELD	CO			
Formation	Cement Via	Type Of Service	Well Type	Age	AFE#	PO#
	TUBING	PLUG		REWORK		

Customer: ANADARKO

Remarks: TEST H2O
SAFETY MEETING
165 SKS, 33.8 BBLs
TOC 503' - 0'

Customer Rep: J. CASTILLO

PH:

WELLBORE DATA				
Type	Size	Weight	Depth	Volume
Surface Casing:	8.785	24.0	503.0	
Production Casing:				
Intermediate:				
Drill Pipe:				
Tubing:	2.375	4.7	503.0	

Type	Size	Depth (Top)	Depth (Bot)	Volume
Liner:				
Open Hole:				

OTHER DATA		
BHT	Max PSI	Total Depth

Packer or RetainerType / Depth:

--	--

Perf Depths:	#	Total
	0	0
	0	
	0	

TIME	PUMP RATES		DENSITY	PRESS	STG TOT	TOTAL	REMARKS
	WATER (gpm)	PUMP (bpm)	(lb/gal)	(psi)	(bbls)	(bbls)	
8:35	0	0.0	6.88	537	44.8	153.8	PSI KICK OUT TEST
8:35	0	0.0	6.88	69	0.0	0.0	H2O SPACER
8:39	45	0.8	15.99	58	3.2	3.2	GOT CIRCULATION / START CMT
8:56	0	0.0	15.68	52	33.8	37.2	OFF LINE

Summary

Max Fl. Rate	Avg Fl. Rate	Max Psi	Avg Psi
0.8	7.6	624	94

Customer Acknowledgement:	Service Rating:	Cementer:	PRODUCTS USED
	<input type="checkbox"/> Satisfactory <input type="checkbox"/> Unsatisfactory	BOHLEN	CLASS G CMT 1.15 YEILD, 15.8 LBS / GAL