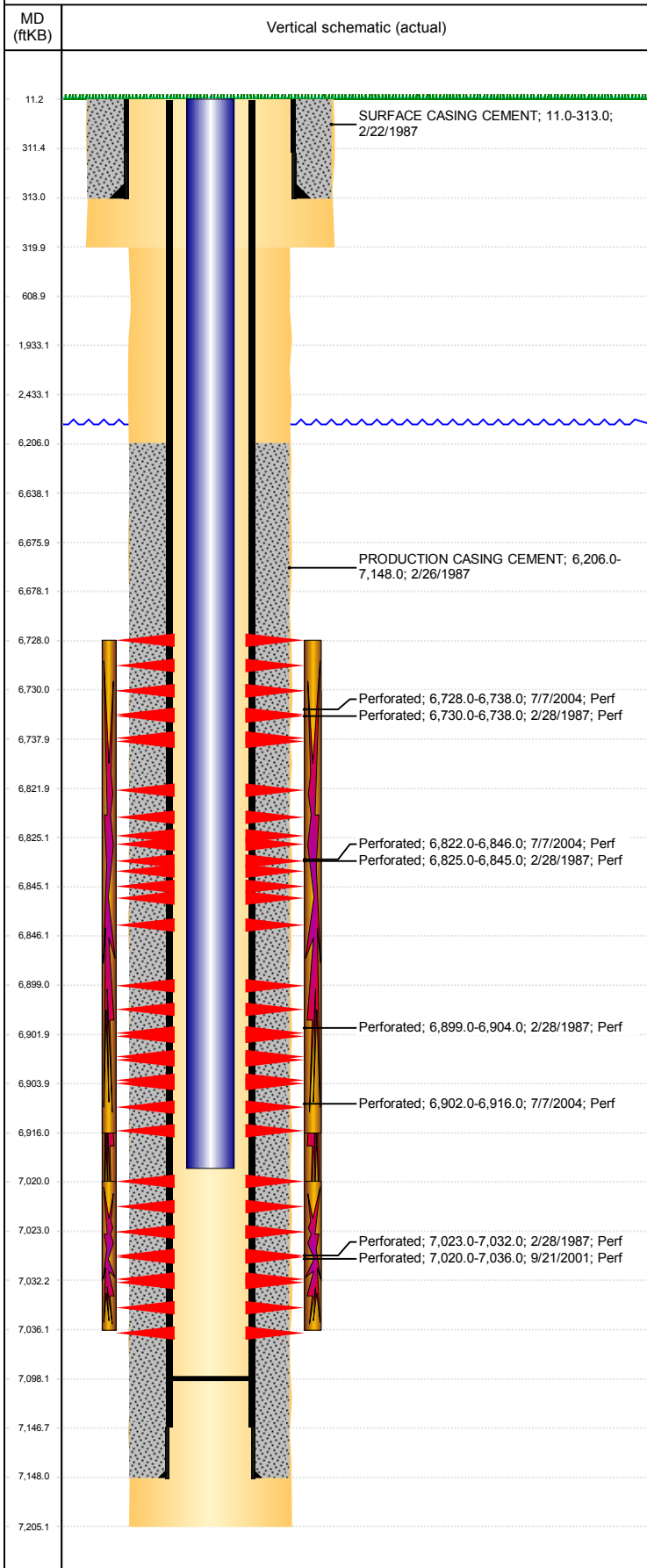


**Well Name: OCOMA B31-16**

VERTICAL, ORIGINAL HOLE, 4/9/2019 8:34:29 AM



Well Header										
API 05-123-13352		Business Unit DJ BASIN			District 15		Well Config VERTICAL			
KB - GL / MSL (ft... 11.00		Spud Date 2/21/1987		P & A Date		Well Production Status SI			SoRT No	
Comment PROD CSG SET DEPTH DISCREPANCY: ST 7205', DRL RPTS 7148'.										
Surface Location (Congressional)										
Qtr 3 SE	Qtr 4 SE	Section 31	Twnshp 5	Twnsh... N	Range 64	Rng E... W	Actual Latitude (°) 40.35029163	Actual Longitude (°) -104.58481216		
Wellbore Sections										
Section Des			Size (in)			Act Top, MD (ftKB)		Act Btm, MD (ftKB)		
SURFACE			12 1/4			11		320		
PRODUCTION			7 7/8			320		7,205		
Casing Strings										
Csg Des			Run Date		OD (in)	Wt/Len (lb/ft)	Grade	Top, MD (ftKB)	MD (ftKB)	
Surface			2/22/1987		8 5/8	24.00	?	11.0	313.0	
Production			2/26/1987		4 1/2	15.10	?	11.0	7,148.0	
Cement										
Des					Start Date		Top (ftKB)		Btm (ftKB)	
SURFACE CASING CEMENT					2/22/1987		11.0		313.0	
PRODUCTION CASING CEMENT					2/26/1987		6,206.0		7,148.0	
Zone Statuses										
Zone Name		Status Date		Status	Fluid Type	Job			Prod Method	
CODELL		10/24/2004		PR	Gas	RE-FRAC, 6/30/2004 00:00			Flowing	
CODELL		2/4/2010		PR	Water	RE-FRAC, 6/30/2004 00:00				
NIOBRARA		10/24/2004		PR	Gas	RE-FRAC, 6/30/2004 00:00			Flowing	
NIOBRARA		2/4/2010		PR	Water					
NIOBRARA-CO...		2/4/2010		PR	Water				Flowing	
NIOBRARA-CO...		9/22/2016		SI					Flowing	
Perforation Data										
Linked Zone		Bnch/Stg		Entered Shot Total		Top (ftKB)		Btm (ftKB)		Date
NIOBRARA, ORIGINAL HOLE		A		40		6,728.00		6,738.00		7/7/2004
NIOBRARA, ORIGINAL HOLE		A		2		6,730.00		6,738.00		2/28/1987
NIOBRARA, ORIGINAL HOLE		B		96		6,822.00		6,846.00		7/7/2004
NIOBRARA, ORIGINAL HOLE		B		6		6,825.00		6,845.00		2/28/1987
NIOBRARA, ORIGINAL HOLE		C		2		6,899.00		6,904.00		2/28/1987
NIOBRARA, ORIGINAL HOLE		C		24		6,902.00		6,916.00		7/7/2004
CODELL, ORIGINAL HOLE				64		7,020.00		7,036.00		9/21/2001
CODELL, ORIGINAL HOLE				5		7,023.00		7,032.00		2/28/1987
Stimulation Intervals										
Zone				Start Date			Top (ftKB)		Btm (ftKB)	
NIOBRARA, ORIGINAL HOLE				7/9/2004			6,728.0		6,916.0	
NIOBRARA-CODELL, ORIGINAL HOLE				3/4/1987			6,730.0		7,032.0	
CODELL, ORIGINAL HOLE				10/1/2001			7,020.0		7,036.0	
Other In Hole										
Run Date		Des				OD (in)		Top (ftKB)		Btm (ftKB)
Logs										
Date		Type					Top, MD (ftKB)		Btm, MD (ftKB)	
2/25/1987		COMPENSATED DENSITY					3,630.0		7,156.0	
2/25/1987		DUAL INDUCTION					313.0		7,155.0	
2/28/1987		CEMENT BOND					6,000.0		7,067.0	
3/30/2011		GYRO					10.0		4,900.0	
5/11/2011		GYRO					10.0		6,900.0	
Plug Back Total Depths										
Date		Type			Com					Depth (ftKB)
8/20/2010		FILL			FILL					7,098.0