

# PDC Energy Inc. DJ Basin

Well Name: **Harold 6Y-304**

Surface Location: Harold 4N64W6X Pad Sec.6-T4N-R64W

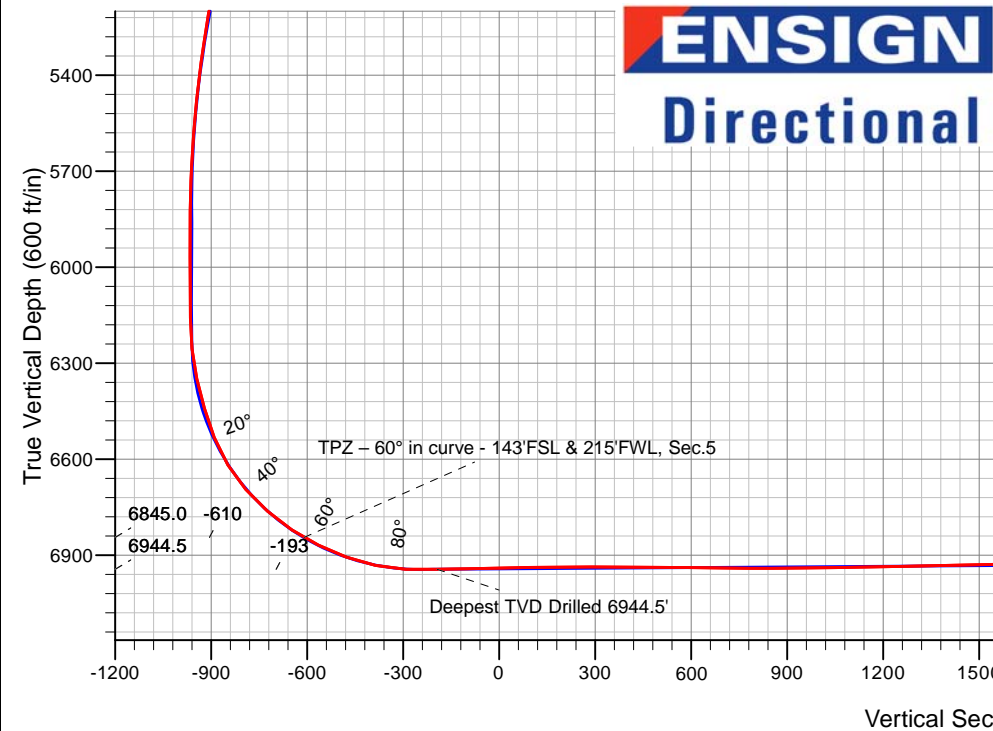
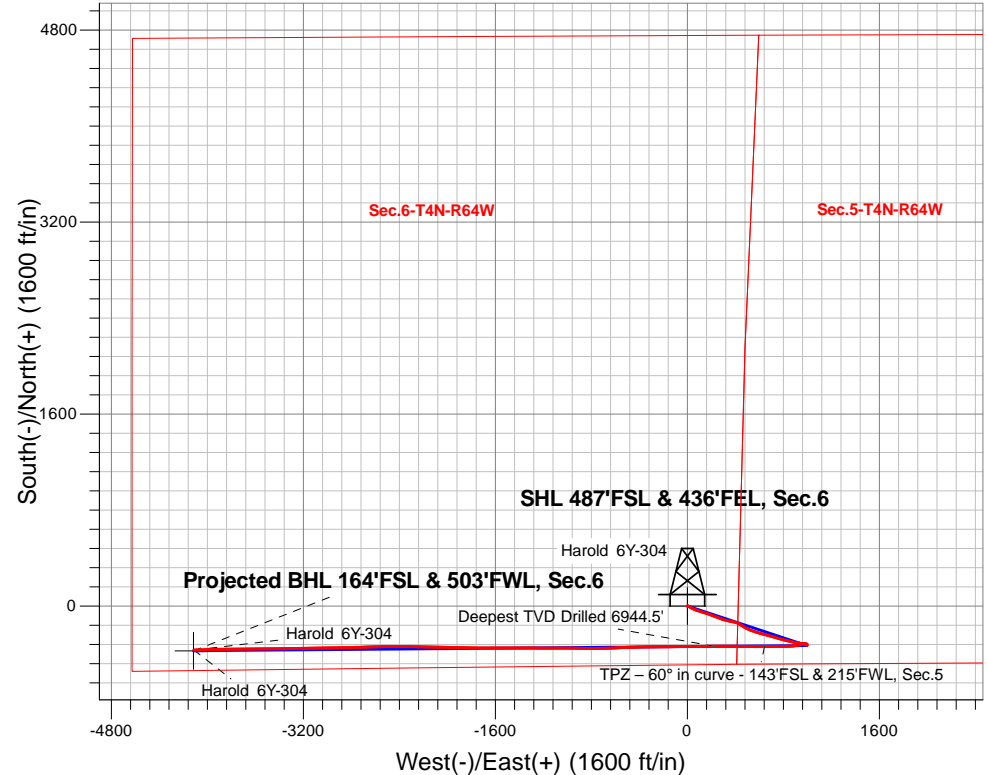
North American Datum 1983 , US State Plane 1983, Colorado Northern Zone

Ground Elevation: 4787.0

+N/-S	+E/-W	Northing	Easting	Latitude	Longitude	Slot
0.0	0.0	1366345.22	254938.65	40.335410	-104.585490	
RKB - 23' WELL @ 4810.0ft (RKB - 23')						

## FINAL SURVEY

**Projected Bottom Hole Location**  
**11,852'MD 6905'TVD 368'S & 4111'W of SHL**  
**91.80 degree Incl @ 267.78 degree AZM**



Harold 4N64W6X Pad Sec.6-T4N-R64W  
Harold 6Y-304  
Harold 6Y-304 Wellbore #1  
16:02, February 07 2019

### ANNOTATIONS

TVD	MD	Annotation
6845.0	7078.2	TPZ - 60° in curve - 143'FSL & 215'FWL, Sec.5
6944.5	7515.0	Deepest TVD Drilled 6944.5'

### LEGEND

- Harold 6Y-304, Harold 6Y-304 Wellbore #1, Plan #2 (2-02-19) V0
- Harold 6Y-304 Wellbore #1
- Survey #1

**Projected BHL 164'FSL & 503'FWL, Sec.6**

Harold 6Y-304

Harold 6Y-304



## **PDC Energy Inc. DJ Basin**

**SEC.6-T4N-R64W**

**Harold 4N64W6X Pad Sec.6-T4N-R64W**

**Harold 6Y-304**

**Harold 6Y-304 Wellbore #1**

**Survey: Survey #1**

## **Standard Survey Report**

**07 February, 2019**

<b>Company:</b>	PDC Energy Inc. DJ Basin	<b>Local Co-ordinate Reference:</b>	Well Harold 6Y-304
<b>Project:</b>	SEC.6-T4N-R64W	<b>TVD Reference:</b>	WELL @ 4810.0ft (RKB - 23')
<b>Site:</b>	Harold 4N64W6X Pad Sec.6-T4N-R64W	<b>MD Reference:</b>	WELL @ 4810.0ft (RKB - 23')
<b>Well:</b>	Harold 6Y-304	<b>North Reference:</b>	True
<b>Wellbore:</b>	Harold 6Y-304 Wellbore #1	<b>Survey Calculation Method:</b>	Minimum Curvature
<b>Design:</b>	Harold 6Y-304 Wellbore #1	<b>Database:</b>	US_EDM

<b>Project</b>	SEC.6-T4N-R64W, Weld County, CO		
<b>Map System:</b>	US State Plane 1983	<b>System Datum:</b>	Mean Sea Level
<b>Geo Datum:</b>	North American Datum 1983		Using Well Reference Point
<b>Map Zone:</b>	Colorado Northern Zone		Using geodetic scale factor

Site	Harold 4N64W6X Pad Sec.6-T4N-R64W				
Site Position:		Northing:	1,366,494.58 usft	Latitude:	40.335820
From:	Lat/Long	Easting:	3,254,937.11 usft	Longitude:	-104.585490
Position Uncertainty:	0.0 ft	Slot Radius:	13-3/16 "	Grid Convergence:	0.59 °

Well	Harold 6Y-304					
Well Position	+N/-S	0.0 ft	Northing:	1,366,345.22 usft	Latitude:	40.335410
	+E/-W	0.0 ft	Easting:	3,254,938.65 usft	Longitude:	-104.585490
Position Uncertainty		0.0 ft	Wellhead Elevation:	0.0 ft	Ground Level:	4,787.0 ft

<b>Wellbore</b>	Harold 6Y-304 Wellbore #1				
<b>Magnetics</b>	<b>Model Name</b>	<b>Sample Date</b>	<b>Declination (°)</b>	<b>Dip Angle (°)</b>	<b>Field Strength (nT)</b>
	HDGM	11/13/2018	8.20	66.83	52,200

<b>Design</b>	Harold 6Y-304 Wellbore #1				
<b>Audit Notes:</b>					
<b>Version:</b>	1.0	<b>Phase:</b>	ACTUAL	<b>Tie On Depth:</b>	0.0
<b>Vertical Section:</b>	<b>Depth From (TVD) (ft)</b>	<b>+N/-S (ft)</b>	<b>+E/-W (ft)</b>	<b>Direction (°)</b>	
	0.0	0.0	0.0	264.89	

<b>Survey Program</b>	<b>Date</b>	2/7/2019			
<b>From (ft)</b>	<b>To (ft)</b>	<b>Survey (Wellbore)</b>	<b>Tool Name</b>	<b>Description</b>	
252.0	11,852.0	Survey #1 (Harold 6Y-304 Wellbore #1)	MWD	MWD - Standard	

<b>Survey</b>										
<b>Measured Depth (ft)</b>	<b>Inclination (°)</b>	<b>Azimuth (°)</b>	<b>Vertical Depth (ft)</b>	<b>+N/-S (ft)</b>	<b>+E/-W (ft)</b>	<b>Vertical Section (ft)</b>	<b>Dogleg Rate (°/100usft)</b>	<b>Build Rate (°/100usft)</b>	<b>Turn Rate (°/100usft)</b>	
0.0	0.00	0.00	0.0	0.0	0.0	0.0	0.00	0.00	0.00	
252.0	0.49	56.30	252.0	0.6	0.9	-0.9	0.19	0.19	0.00	
348.0	1.57	110.97	348.0	0.4	2.5	-2.5	1.40	1.13	56.95	
444.0	3.48	108.16	443.9	-1.0	6.5	-6.3	1.99	1.99	-2.93	
539.0	4.84	114.84	538.6	-3.6	12.8	-12.5	1.52	1.43	7.03	
635.0	6.51	123.28	634.2	-8.3	21.1	-20.2	1.94	1.74	8.79	
731.0	9.00	121.34	729.3	-15.2	32.0	-30.5	2.61	2.59	-2.02	
826.0	10.82	115.30	822.9	-22.9	46.4	-44.2	2.20	1.92	-6.36	
921.0	13.23	110.95	915.8	-30.6	64.7	-61.7	2.71	2.54	-4.58	
1,017.0	12.96	109.69	1,009.3	-38.1	85.1	-81.3	0.41	-0.28	-1.31	

<b>Company:</b>	PDC Energy Inc. DJ Basin	<b>Local Co-ordinate Reference:</b>	Well Harold 6Y-304
<b>Project:</b>	SEC.6-T4N-R64W	<b>TVD Reference:</b>	WELL @ 4810.0ft (RKB - 23')
<b>Site:</b>	Harold 4N64W6X Pad Sec.6-T4N-R64W	<b>MD Reference:</b>	WELL @ 4810.0ft (RKB - 23')
<b>Well:</b>	Harold 6Y-304	<b>North Reference:</b>	True
<b>Wellbore:</b>	Harold 6Y-304 Wellbore #1	<b>Survey Calculation Method:</b>	Minimum Curvature
<b>Design:</b>	Harold 6Y-304 Wellbore #1	<b>Database:</b>	US_EDM

Survey									
Measured Depth (ft)	Inclination (°)	Azimuth (°)	Vertical Depth (ft)	+N/-S (ft)	+E/-W (ft)	Vertical Section (ft)	Dogleg Rate (°/100usft)	Build Rate (°/100usft)	Turn Rate (°/100usft)
1,112.0	13.61	109.37	1,101.7	-45.4	105.6	-101.2	0.69	0.68	-0.34
1,208.0	13.47	104.30	1,195.1	-51.9	127.1	-122.0	1.24	-0.15	-5.28
1,303.0	12.56	107.48	1,287.6	-57.8	147.7	-142.0	1.22	-0.96	3.35
1,399.0	13.13	109.70	1,381.2	-64.6	167.9	-161.5	0.79	0.59	2.31
1,495.0	12.54	109.20	1,474.8	-71.7	188.0	-180.9	0.63	-0.61	-0.52
1,590.0	11.88	110.51	1,567.7	-78.5	206.9	-199.1	0.75	-0.69	1.38
1,686.0	11.05	109.15	1,661.8	-85.0	224.9	-216.4	0.91	-0.86	-1.42
1,781.0	11.02	112.08	1,755.0	-91.4	241.9	-232.8	0.59	-0.03	3.08
1,876.0	11.02	111.91	1,848.2	-98.2	258.7	-248.9	0.03	0.00	-0.18
1,972.0	12.15	109.87	1,942.3	-105.0	276.7	-266.3	1.25	1.18	-2.13
2,068.0	12.78	109.21	2,036.0	-112.0	296.3	-285.1	0.67	0.66	-0.69
2,163.0	12.99	103.96	2,128.6	-118.0	316.5	-304.8	1.25	0.22	-5.53
2,258.0	13.46	101.65	2,221.1	-122.8	337.7	-325.5	0.74	0.49	-2.43
2,354.0	13.13	105.54	2,314.5	-128.0	359.2	-346.4	0.99	-0.34	4.05
2,450.0	10.33	98.49	2,408.5	-132.2	378.2	-364.9	3.27	-2.92	-7.34
2,516.0	9.46	95.81	2,473.6	-133.6	389.5	-376.0	1.49	-1.32	-4.06
2,637.0	10.93	109.60	2,592.7	-138.4	410.2	-396.2	2.35	1.21	11.40
2,733.0	11.91	123.59	2,686.8	-147.0	427.0	-412.2	3.05	1.02	14.57
2,828.0	12.47	121.18	2,779.6	-157.7	443.9	-428.1	0.80	0.59	-2.54
2,923.0	13.63	124.24	2,872.2	-169.3	462.0	-445.0	1.42	1.22	3.22
3,019.0	13.53	118.61	2,965.5	-181.1	481.2	-463.1	1.38	-0.10	-5.86
3,115.0	12.88	112.82	3,059.0	-190.6	500.9	-481.9	1.53	-0.68	-6.03
3,210.0	12.01	113.09	3,151.7	-198.6	519.7	-500.0	0.92	-0.92	0.28
3,306.0	10.45	112.09	3,245.9	-205.8	537.0	-516.5	1.64	-1.63	-1.04
3,401.0	11.25	109.49	3,339.2	-212.1	553.7	-532.6	0.99	0.84	-2.74
3,496.0	11.64	107.88	3,432.3	-218.1	571.6	-549.9	0.53	0.41	-1.69
3,592.0	10.73	106.61	3,526.5	-223.7	589.4	-567.1	0.98	-0.95	-1.32
3,688.0	11.42	104.77	3,620.7	-228.6	607.1	-584.3	0.81	0.72	-1.92
3,783.0	10.69	104.12	3,713.9	-233.2	624.8	-601.5	0.78	-0.77	-0.68
3,878.0	11.55	104.55	3,807.1	-237.7	642.5	-618.8	0.91	0.91	0.45
3,974.0	12.54	105.26	3,901.0	-242.9	661.9	-637.6	1.04	1.03	0.74
4,070.0	11.80	102.30	3,994.9	-247.7	681.5	-656.7	1.01	-0.77	-3.08
4,165.0	11.93	108.89	4,087.8	-253.0	700.3	-675.0	1.43	0.14	6.94
4,260.0	10.92	108.02	4,181.0	-258.9	718.1	-692.2	1.08	-1.06	-0.92
4,356.0	12.10	105.77	4,275.0	-264.5	736.5	-710.0	1.31	1.23	-2.34
4,452.0	11.57	103.94	4,369.0	-269.5	755.5	-728.5	0.68	-0.55	-1.91
4,547.0	12.79	104.72	4,461.9	-274.5	774.9	-747.4	1.30	1.28	0.82
4,642.0	14.57	106.28	4,554.2	-280.5	796.5	-768.4	1.91	1.87	1.64
4,738.0	12.94	104.86	4,647.4	-286.7	818.5	-789.7	1.73	-1.70	-1.48
4,833.0	14.00	103.63	4,739.8	-292.1	840.0	-810.6	1.16	1.12	-1.29
4,929.0	13.72	102.32	4,833.0	-297.3	862.4	-832.5	0.44	-0.29	-1.36
5,025.0	12.30	98.88	4,926.5	-301.3	883.6	-853.3	1.68	-1.48	-3.58
5,120.0	12.05	98.94	5,019.4	-304.4	903.4	-872.7	0.26	-0.26	0.06
5,216.0	11.29	97.50	5,113.4	-307.2	922.6	-891.6	0.85	-0.79	-1.50

<b>Company:</b>	PDC Energy Inc. DJ Basin	<b>Local Co-ordinate Reference:</b>	Well Harold 6Y-304
<b>Project:</b>	SEC.6-T4N-R64W	<b>TVD Reference:</b>	WELL @ 4810.0ft (RKB - 23')
<b>Site:</b>	Harold 4N64W6X Pad Sec.6-T4N-R64W	<b>MD Reference:</b>	WELL @ 4810.0ft (RKB - 23')
<b>Well:</b>	Harold 6Y-304	<b>North Reference:</b>	True
<b>Wellbore:</b>	Harold 6Y-304 Wellbore #1	<b>Survey Calculation Method:</b>	Minimum Curvature
<b>Design:</b>	Harold 6Y-304 Wellbore #1	<b>Database:</b>	US_EDM

Survey									
Measured Depth (ft)	Inclination (°)	Azimuth (°)	Vertical Depth (ft)	+N/-S (ft)	+E/-W (ft)	Vertical Section (ft)	Dogleg Rate (°/100usft)	Build Rate (°/100usft)	Turn Rate (°/100usft)
5,312.0	9.51	104.48	5,207.8	-310.4	939.6	-908.2	2.27	-1.85	7.27
5,407.0	8.74	96.35	5,301.6	-313.1	954.4	-922.7	1.58	-0.81	-8.56
5,502.0	7.35	104.01	5,395.7	-315.4	967.5	-935.5	1.84	-1.46	8.06
5,598.0	6.21	101.09	5,491.0	-317.9	978.5	-946.3	1.24	-1.19	-3.04
5,693.0	4.79	105.16	5,585.6	-319.9	987.4	-955.0	1.55	-1.49	4.28
5,789.0	3.85	129.80	5,681.3	-323.0	993.7	-961.0	2.14	-0.98	25.67
5,885.0	1.37	101.32	5,777.2	-325.3	997.3	-964.4	2.84	-2.58	-29.67
5,980.0	0.53	14.69	5,872.2	-325.1	998.6	-965.6	1.52	-0.88	-91.19
6,076.0	1.19	356.02	5,968.2	-323.7	998.6	-965.8	0.74	0.69	-19.45
6,172.0	1.92	334.14	6,064.2	-321.2	997.8	-965.2	0.97	0.76	-22.79
6,267.0	2.14	347.09	6,159.1	-318.1	996.7	-964.4	0.53	0.23	13.63
6,363.0	5.61	278.00	6,254.9	-315.7	991.7	-959.6	5.46	3.61	-71.97
6,458.0	12.44	262.97	6,348.7	-316.3	976.9	-944.9	7.55	7.19	-15.82
6,554.0	16.57	259.93	6,441.6	-319.9	953.2	-920.9	4.37	4.30	-3.17
6,650.0	21.22	258.12	6,532.4	-325.9	922.7	-890.0	4.88	4.84	-1.89
6,746.0	31.48	261.17	6,618.3	-333.4	880.8	-847.6	10.78	10.69	3.18
6,841.0	41.33	270.63	6,694.7	-336.8	824.7	-791.4	11.91	10.37	9.96
6,937.0	48.60	268.91	6,762.6	-337.2	756.9	-723.9	7.68	7.57	-1.79
7,033.0	56.26	268.85	6,821.1	-338.7	680.9	-648.0	7.98	7.98	-0.06
7,078.2	59.99	269.79	6,845.0	-339.1	642.5	-609.8	8.45	8.26	2.08
TPZ - 60° in curve - 143'FSL & 215'FWL, Sec.5									
7,129.0	64.20	270.77	6,868.7	-338.9	597.7	-565.1	8.45	8.28	1.92
7,225.0	70.13	270.77	6,906.0	-337.7	509.2	-477.1	6.18	6.18	0.00
7,321.0	77.44	270.42	6,932.8	-336.7	417.1	-385.5	7.62	7.61	-0.36
7,416.0	88.49	270.72	6,944.4	-335.8	323.0	-291.8	11.64	11.63	0.32
7,512.0	91.28	269.64	6,944.6	-335.5	227.0	-196.2	3.12	2.91	-1.13
7,515.0	91.28	269.62	6,944.5	-335.5	224.0	-193.2	0.67	0.05	-0.66
Deepest TVD Drilled 6944.5'									
7,607.0	91.33	269.01	6,942.4	-336.6	132.0	-101.5	0.67	0.05	-0.66
7,702.0	90.64	270.03	6,940.8	-337.4	37.1	-6.8	1.30	-0.73	1.07
7,798.0	91.34	269.10	6,939.1	-338.1	-58.9	88.8	1.21	0.73	-0.97
7,894.0	90.35	269.42	6,937.7	-339.4	-154.9	184.5	1.08	-1.03	0.33
7,990.0	90.69	269.06	6,936.8	-340.7	-250.9	280.3	0.52	0.35	-0.38
8,085.0	89.40	269.68	6,936.8	-341.7	-345.9	375.0	1.51	-1.36	0.65
8,180.0	89.34	268.25	6,937.8	-343.4	-440.9	469.7	1.51	-0.06	-1.51
8,276.0	89.38	267.73	6,938.9	-346.8	-536.8	565.6	0.54	0.04	-0.54
8,372.0	89.42	267.04	6,939.9	-351.2	-632.7	661.5	0.72	0.04	-0.72
8,468.0	88.96	268.83	6,941.2	-354.6	-728.6	757.3	1.92	-0.48	1.86
8,563.0	90.62	271.68	6,941.6	-354.2	-823.6	851.9	3.47	1.75	3.00
8,659.0	90.62	270.91	6,940.6	-352.0	-919.6	947.3	0.80	0.00	-0.80
8,754.0	91.07	270.29	6,939.2	-351.0	-1,014.6	1,041.8	0.81	0.47	-0.65
8,850.0	91.20	269.86	6,937.2	-350.9	-1,110.5	1,137.4	0.47	0.14	-0.45
8,946.0	90.66	270.75	6,935.7	-350.4	-1,206.5	1,232.9	1.08	-0.56	0.93

<b>Company:</b>	PDC Energy Inc. DJ Basin	<b>Local Co-ordinate Reference:</b>	Well Harold 6Y-304
<b>Project:</b>	SEC.6-T4N-R64W	<b>TVD Reference:</b>	WELL @ 4810.0ft (RKB - 23')
<b>Site:</b>	Harold 4N64W6X Pad Sec.6-T4N-R64W	<b>MD Reference:</b>	WELL @ 4810.0ft (RKB - 23')
<b>Well:</b>	Harold 6Y-304	<b>North Reference:</b>	True
<b>Wellbore:</b>	Harold 6Y-304 Wellbore #1	<b>Survey Calculation Method:</b>	Minimum Curvature
<b>Design:</b>	Harold 6Y-304 Wellbore #1	<b>Database:</b>	US_EDM

Survey									
Measured Depth (ft)	Inclination (°)	Azimuth (°)	Vertical Depth (ft)	+N/-S (ft)	+E/-W (ft)	Vertical Section (ft)	Dogleg Rate (°/100usft)	Build Rate (°/100usft)	Turn Rate (°/100usft)
9,041.0	90.99	270.19	6,934.3	-349.6	-1,301.5	1,327.5	0.68	0.35	-0.59
9,137.0	91.39	269.89	6,932.3	-349.6	-1,397.5	1,423.1	0.52	0.42	-0.31
9,232.0	91.71	269.47	6,929.8	-350.1	-1,492.5	1,517.7	0.56	0.34	-0.44
9,327.0	90.97	270.71	6,927.5	-349.9	-1,587.4	1,612.3	1.52	-0.78	1.31
9,423.0	91.18	270.36	6,925.7	-349.0	-1,683.4	1,707.8	0.43	0.22	-0.36
9,518.0	90.29	270.96	6,924.5	-347.9	-1,778.4	1,802.3	1.13	-0.94	0.63
9,614.0	90.34	270.46	6,924.0	-346.8	-1,874.4	1,897.8	0.52	0.05	-0.52
9,709.0	90.83	270.19	6,923.0	-346.2	-1,969.4	1,992.4	0.59	0.52	-0.28
9,805.0	89.17	271.37	6,923.0	-344.9	-2,065.4	2,087.9	2.12	-1.73	1.23
9,899.0	89.48	271.48	6,924.1	-342.6	-2,159.3	2,181.3	0.35	0.33	0.12
9,995.0	89.31	271.14	6,925.1	-340.4	-2,255.3	2,276.6	0.40	-0.18	-0.35
10,090.0	88.85	270.41	6,926.7	-339.1	-2,350.3	2,371.1	0.91	-0.48	-0.77
10,184.0	88.36	270.46	6,929.0	-338.4	-2,444.2	2,464.7	0.52	-0.52	0.05
10,280.0	87.89	269.74	6,932.1	-338.2	-2,540.2	2,560.2	0.90	-0.49	-0.75
10,375.0	89.92	267.95	6,933.9	-340.1	-2,635.1	2,655.0	2.85	2.14	-1.88
10,471.0	90.41	267.33	6,933.6	-344.1	-2,731.1	2,750.9	0.82	0.51	-0.65
10,566.0	91.72	269.10	6,931.9	-347.0	-2,826.0	2,845.7	2.32	1.38	1.86
10,662.0	92.65	268.69	6,928.2	-348.9	-2,921.9	2,941.4	1.06	0.97	-0.43
10,757.0	92.09	269.55	6,924.3	-350.3	-3,016.8	3,036.0	1.08	-0.59	0.91
10,853.0	92.13	269.10	6,920.7	-351.5	-3,112.7	3,131.7	0.47	0.04	-0.47
10,949.0	90.18	269.96	6,918.8	-352.3	-3,208.7	3,227.3	2.22	-2.03	0.90
11,044.0	90.34	269.21	6,918.4	-353.0	-3,303.7	3,322.0	0.81	0.17	-0.79
11,140.0	90.82	268.79	6,917.4	-354.6	-3,399.7	3,417.8	0.66	0.50	-0.44
11,235.0	91.32	268.33	6,915.6	-357.0	-3,494.6	3,512.5	0.72	0.53	-0.48
11,331.0	89.91	269.97	6,914.6	-358.4	-3,590.6	3,608.3	2.25	-1.47	1.71
11,427.0	90.64	269.55	6,914.1	-358.8	-3,686.6	3,703.9	0.88	0.76	-0.44
11,523.0	90.40	269.58	6,913.3	-359.6	-3,782.6	3,799.6	0.25	-0.25	0.03
11,619.0	91.41	269.11	6,911.8	-360.7	-3,878.6	3,895.3	1.16	1.05	-0.49
11,715.0	91.77	268.29	6,909.1	-362.8	-3,974.5	3,991.0	0.93	0.38	-0.85
11,792.0	91.80	267.78	6,906.7	-365.5	-4,051.4	4,067.9	0.66	0.04	-0.66
11,852.0	91.80	267.78	6,904.8	-367.8	-4,111.4	4,127.8	0.00	0.00	0.00

Design Targets									
Target Name	Dip Angle (°)	Dip Dir. (°)	TVD (ft)	+N/-S (ft)	+E/-W (ft)	Northing (usft)	Easting (usft)	Latitude	Longitude
SHL 487'FSL & 436'FEL - hit/miss target - Shape - Point	0.00	0.00	1.0	0.0	0.0	1,366,345.23	3,254,938.65	40.335410	-104.585490
BHL 158'FSL & 500'FWL - survey misses target center by 12.1ft at 11852.0ft MD (6904.8 TVD, -367.8 N, -4111.4 E) - Point	0.00	0.00	6,915.0	-373.5	-4,114.6	1,365,929.29	3,250,828.30	40.334384	-104.600249

<b>Company:</b>	PDC Energy Inc. DJ Basin	<b>Local Co-ordinate Reference:</b>	Well Harold 6Y-304
<b>Project:</b>	SEC.6-T4N-R64W	<b>TVD Reference:</b>	WELL @ 4810.0ft (RKB - 23')
<b>Site:</b>	Harold 4N64W6X Pad Sec.6-T4N-R64W	<b>MD Reference:</b>	WELL @ 4810.0ft (RKB - 23')
<b>Well:</b>	Harold 6Y-304	<b>North Reference:</b>	True
<b>Wellbore:</b>	Harold 6Y-304 Wellbore #1	<b>Survey Calculation Method:</b>	Minimum Curvature
<b>Design:</b>	Harold 6Y-304 Wellbore #1	<b>Database:</b>	US_EDM

Survey Annotations				
Measured Depth (ft)	Vertical Depth (ft)	Local Coordinates		Comment
		+N/-S (ft)	+E/-W (ft)	
7,078.2	6,845.0	-339.1	642.5	TPZ – 60° in curve - 143'FSL & 215'FWL, Sec.5
7,515.0	6,944.5	-335.5	224.0	Deepest TVD Drilled 6944.5'

Checked By: _____	Approved By: _____	Date: _____
-------------------	--------------------	-------------