

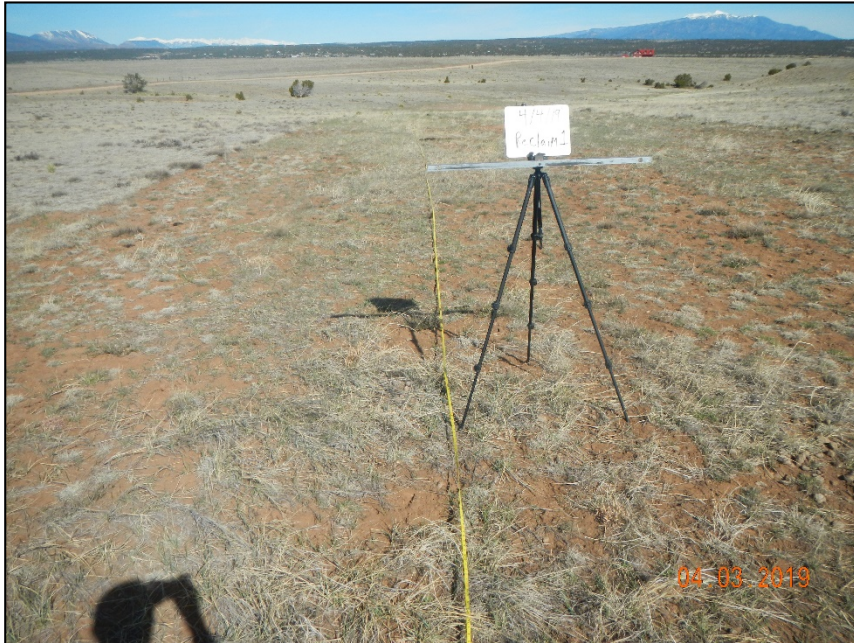
# Inspection Photos

API: 05-055-06158

Operator: PETROGLYPH OPERATING CO

Inspection Date: 4/4/2019

## Inspection Photos



**Photo 1.** Transect Reclaim 1 on access road facing NW.



**Photo 2.** Transect Reclaim 1 on access road facing SE.



## Inspection Photos



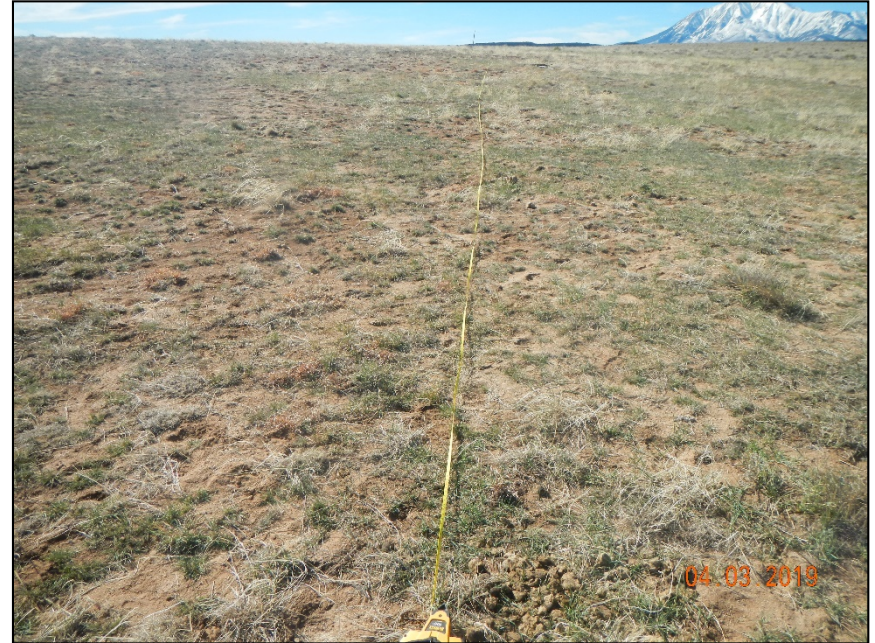
**Photo 3.** Facing east toward the location.



## Inspection Photos



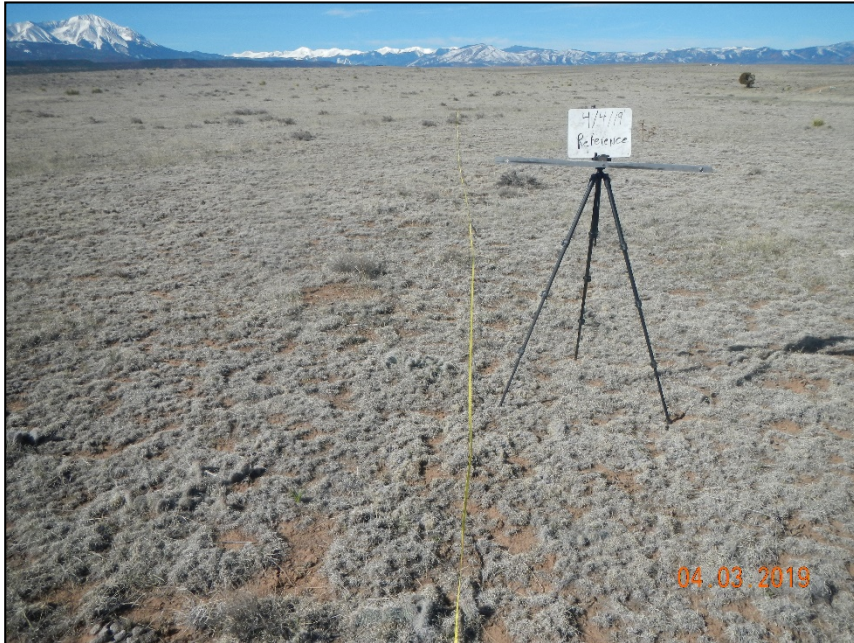
**Photo 4.** Transect Reclaim 2 on location facing N.



**Photo 5.** Transect Reclaim 2 on location facing S.



## Inspection Photos



**Photo 6.** Transect Reference facing W.



**Photo 7.** Transect Reference facing E.

## Inspection Photos

[illegible]

### Photo 8. Transect Data