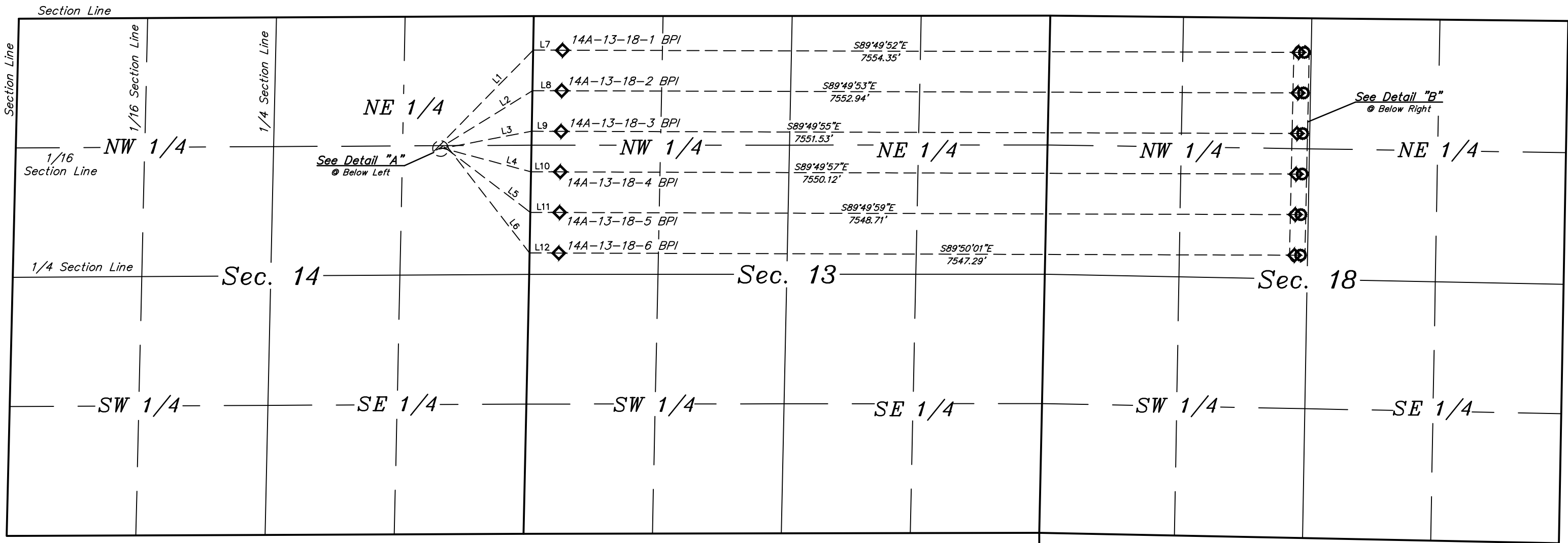


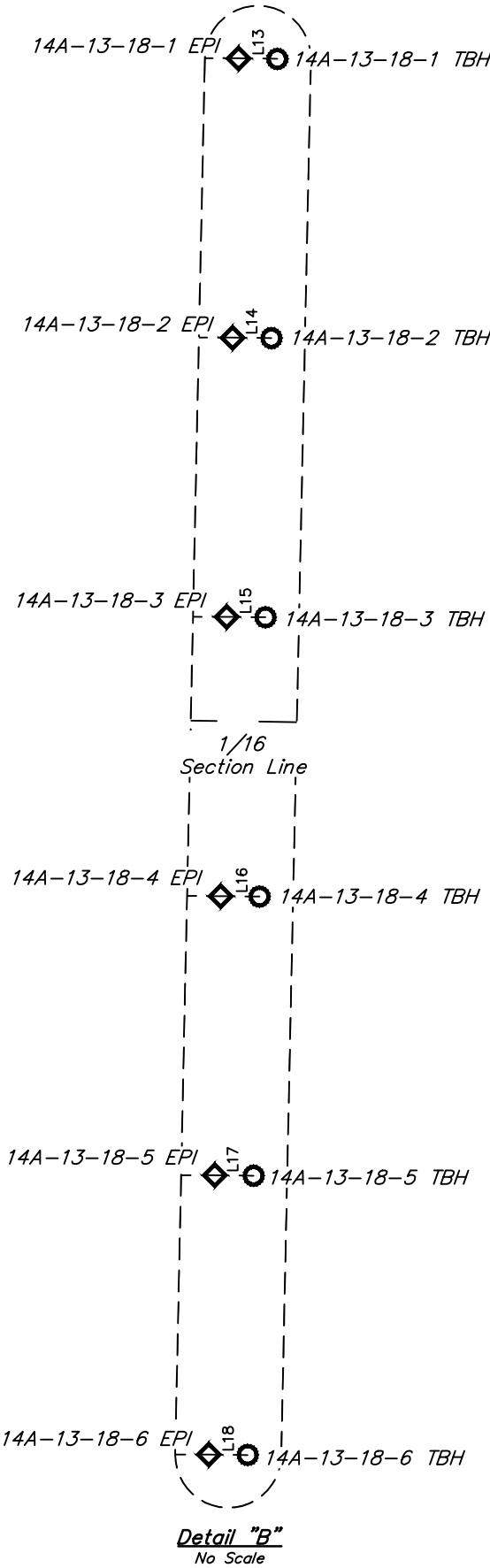
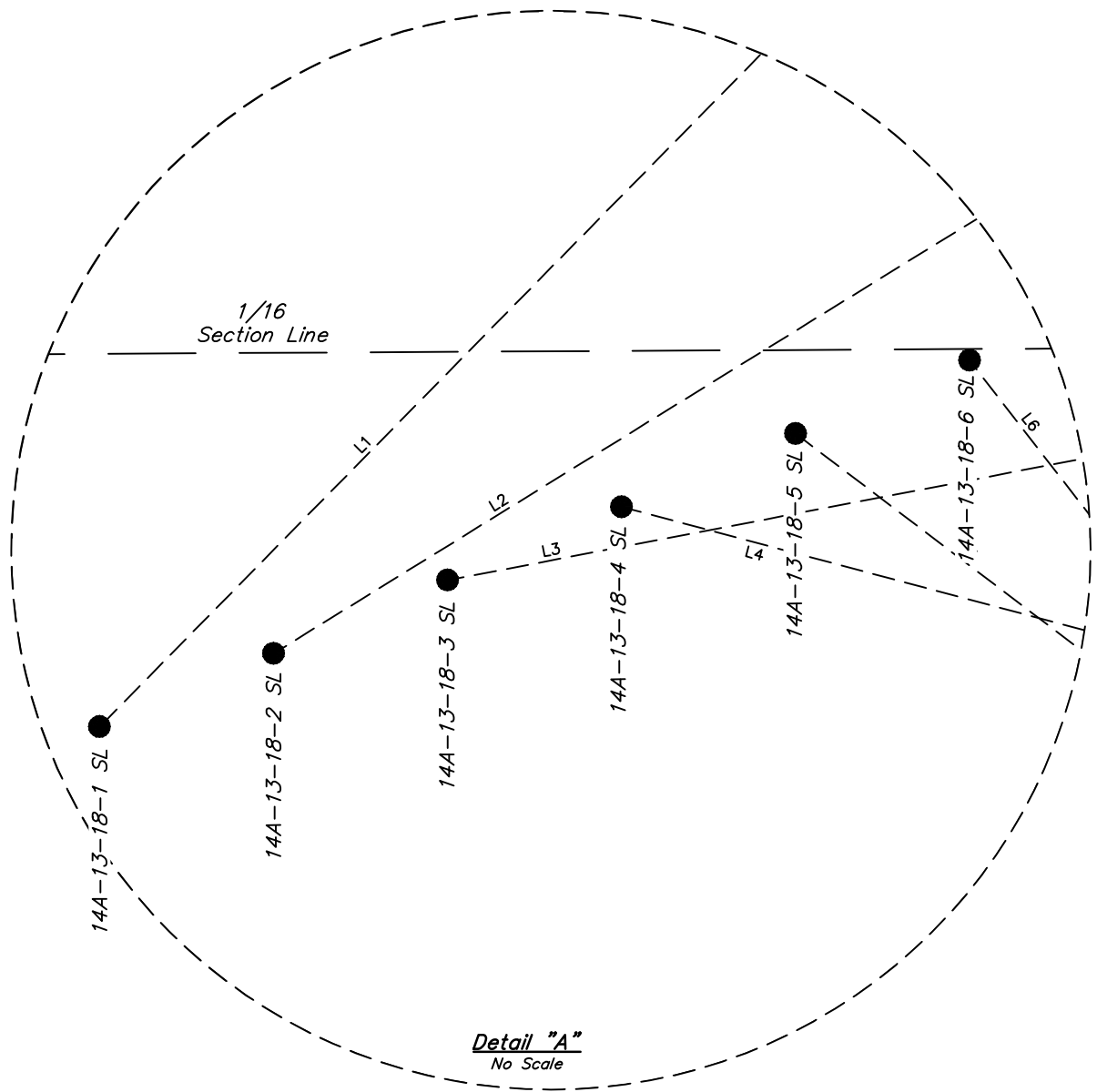


LINE TABLE			LINE TABLE		
LINE	DIRECTION	LENGTH	LINE	DIRECTION	LENGTH
L1	N44°30'04"E	1452.24'	L10	S89°49'57"E	300.03'
L2	N58°16'05"E	1157.75'	L11	S89°49'59"E	300.03'
L3	N79°10'08"E	968.73'	L12	S89°50'01"E	300.03'
L4	S75°04'12"E	950.33'	L13	S89°24'25"E	58.00'
L5	S52°48'08"E	1111.08'	L14	S89°24'25"E	58.00'
L6	S37°47'19"E	1390.15'	L15	S89°24'25"E	58.00'
L7	S89°49'52"E	300.03'	L16	S89°24'25"E	58.00'
L8	S89°49'53"E	300.03'	L17	S89°24'25"E	58.00'
L9	S89°49'55"E	300.03'	L18	S89°24'25"E	58.00'



R
60
W

R
59
W



LEGEND:

- = SURFACE LOCATION.
- ◆ = PRODUCTION INTERVAL.
- = TARGET BOTTOM HOLE.
- SL = SURFACE LOCATION.
- BPI = BEG. PROD. INTERVAL.
- EPI = ENDING PROD. INTERVAL.
- TBH = TARGET BOTTOM HOLE.

REV: 2 03-07-19 C:VIE (SURFACE LOCATION & LATERAL CHANGE)

BISON OIL & GAS II

BOOMSLANG FED 8-60 14A PAD
SE 1/4 NE 1/4, SECTION 14, T8N, R60W, 6th P.M.
WELD COUNTY, COLORADO

SURVEYED BY	JARED CHRISTOPHER	08-11-17	SCALE
DRAWN BY	J.J.	08-17-17	1" = 1000'
MULTI-Well PLAN		FIGURE #5	



UELS, LLC
Corporate Office * 85 South 200 East
Vernal, UT 84078 * (435) 789-1017