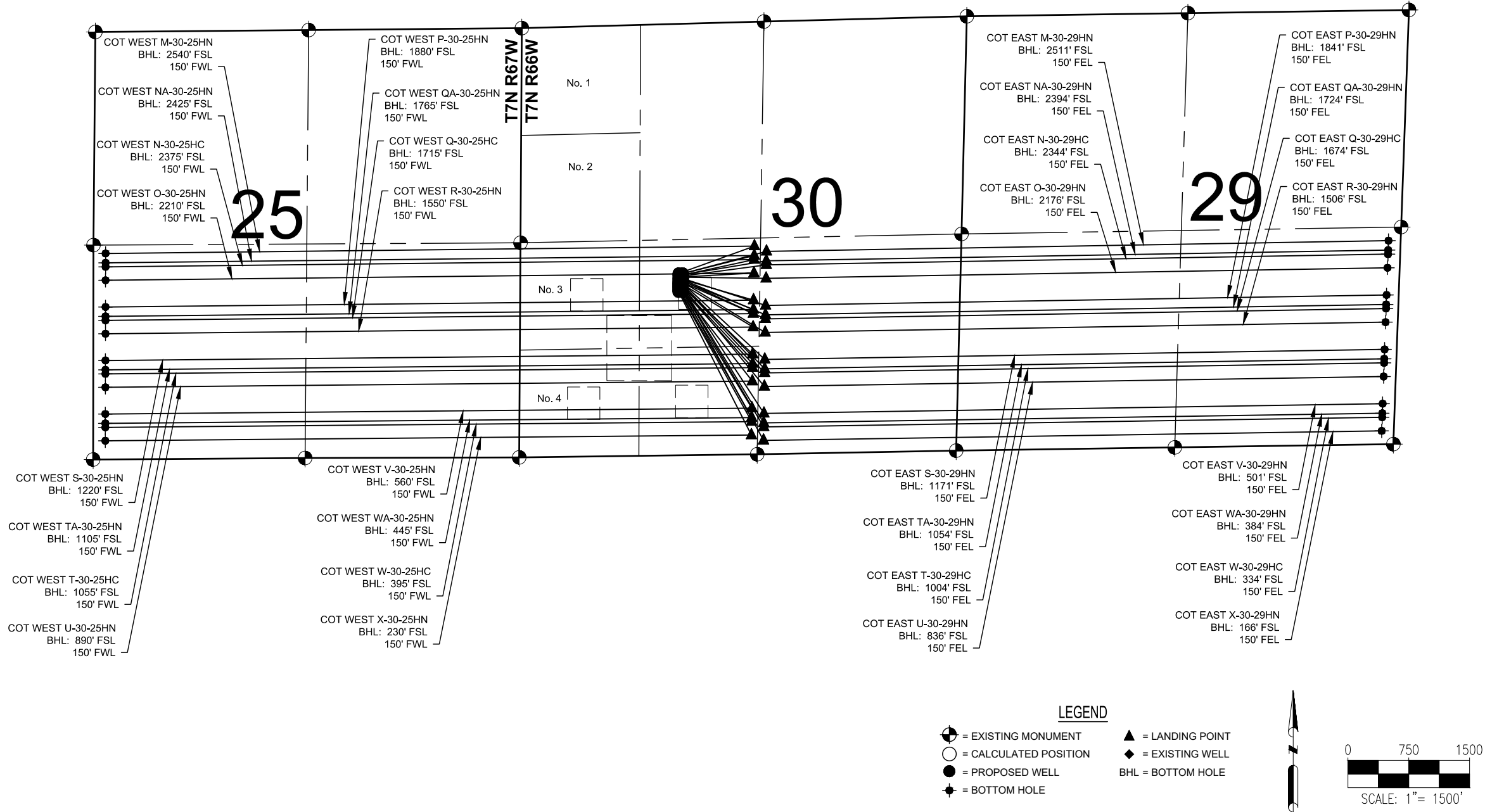


COT 30-J PAD  
MULTI-WELL PLAN

NOTES:

1. THIS FIELD SURVEY CONFORMS TO THE MINIMUM STANDARDS SET BY THE COGCC, RULE NO. 215
2. ALL DISTANCES AND BEARINGS SHOWN HEREON ARE GROUND VALUES AS GPS MEASURED IN THE FIELD, WITH TIES TO WELLS MEASURED PERPENDICULAR TO LINES SHOWN HEREON. THIS LOW DISTORTION PROJECTION (LDP) IS BASED ON THE NORTH AMERICAN DATUM OF 1983, U.S. SURVEY FOOT WITH A LATITUDE ORIGIN OF 40.567905°N, A CENTRAL MERIDIAN LONGITUDE OF 104.773474°W, AND A SCALE FACTOR ON THE CENTRAL MERIDIAN OF 1.000235 (EXACT). THE LDP BASIS OF BEARINGS IS GEODETIC NORTH.
3. FIELD VERIFICATION OF MONUMENTS COMPLETED WITHIN 1 YEAR OF SIGNATURE DATE, UNLESS OTHERWISE NOTED.



NOTES:

- COT WEST M-30-25HN TO BE AT 2242' FSL & 1953' FWL. BOTTOM HOLE AT 2540' FSL & 150' FWL, SEC. 25.
- COT WEST NA-30-25HN TO BE AT 2227' FSL & 1953' FWL. BOTTOM HOLE AT 2425' FSL & 150' FWL, SEC. 25.
- COT WEST N-30-25HC TO BE AT 2212' FSL & 1953' FWL. BOTTOM HOLE AT 2375' FSL & 150' FWL, SEC. 25.
- COT WEST O-30-25HN TO BE AT 2197' FSL & 1953' FWL. BOTTOM HOLE AT 2210' FSL & 150' FWL, SEC. 25.
- COT WEST P-30-25HN TO BE AT 2182' FSL & 1953' FWL. BOTTOM HOLE AT 1880' FSL & 150' FWL, SEC. 25.
- COT WEST QA-30-25HN TO BE AT 2167' FSL & 1953' FWL. BOTTOM HOLE AT 1765' FSL & 150' FWL, SEC. 25.
- COT WEST Q-30-25HC TO BE AT 2152' FSL & 1953' FWL. BOTTOM HOLE AT 1715' FSL & 150' FWL, SEC. 25.
- COT WEST R-30-25HN TO BE AT 2137' FSL & 1953' FWL. BOTTOM HOLE AT 1550' FSL & 150' FWL, SEC. 25.
- COT WEST S-30-25HN TO BE AT 2122' FSL & 1953' FWL. BOTTOM HOLE AT 1220' FSL & 150' FWL, SEC. 25.
- COT WEST TA-30-25HN TO BE AT 2107' FSL & 1953' FWL. BOTTOM HOLE AT 1105' FSL & 150' FWL, SEC. 25.
- COT WEST T-30-25HC TO BE AT 2092' FSL & 1953' FWL. BOTTOM HOLE AT 1055' FSL & 150' FWL, SEC. 25.
- COT WEST U-30-25HN TO BE AT 2077' FSL & 1953' FWL. BOTTOM HOLE AT 890' FSL & 150' FWL, SEC. 25.
- COT WEST V-30-25HN TO BE AT 2062' FSL & 1953' FWL. BOTTOM HOLE AT 560' FSL & 150' FWL, SEC. 25.
- COT WEST WA-30-25HN TO BE AT 2047' FSL & 1953' FWL. BOTTOM HOLE AT 445' FSL & 150' FWL, SEC. 25.
- COT WEST W-30-25HC TO BE AT 2032' FSL & 1953' FWL. BOTTOM HOLE AT 395' FSL & 150' FWL, SEC. 25.
- COT WEST X-30-25HN TO BE AT 2017' FSL & 1953' FWL. BOTTOM HOLE AT 230' FSL & 150' FWL, SEC. 25.
- COT EAST M-30-29HN TO BE AT 2241' FSL & 2003' FWL. BOTTOM HOLE AT 2511' FSL & 150' FEL, SEC. 29.
- COT EAST NA-30-29HN TO BE AT 2226' FSL & 2003' FWL. BOTTOM HOLE AT 2394' FSL & 150' FEL, SEC. 29.
- COT EAST N-30-29HC TO BE AT 2211' FSL & 2003' FWL. BOTTOM HOLE AT 2344' FSL & 150' FEL, SEC. 29.
- COT EAST O-30-29HN TO BE AT 2196' FSL & 2003' FWL. BOTTOM HOLE AT 2176' FSL & 150' FEL, SEC. 29.
- COT EAST P-30-29HN TO BE AT 2181' FSL & 2003' FWL. BOTTOM HOLE AT 1841' FSL & 150' FEL, SEC. 29.
- COT EAST QA-30-29HN TO BE AT 2166' FSL & 2003' FWL. BOTTOM HOLE AT 1724' FSL & 150' FEL, SEC. 29.
- COT EAST Q-30-29HC TO BE AT 2151' FSL & 2003' FWL. BOTTOM HOLE AT 1674' FSL & 150' FEL, SEC. 29.
- COT EAST R-30-29HN TO BE AT 2136' FSL & 2003' FWL. BOTTOM HOLE AT 1506' FSL & 150' FEL, SEC. 29.
- COT EAST S-30-29HN TO BE AT 2121' FSL & 2003' FWL. BOTTOM HOLE AT 1171' FSL & 150' FEL, SEC. 29.
- COT EAST TA-30-29HN TO BE AT 2106' FSL & 2003' FWL. BOTTOM HOLE AT 1054' FSL & 150' FEL, SEC. 29.
- COT EAST T-30-29HC TO BE AT 2091' FSL & 2003' FWL. BOTTOM HOLE AT 1004' FSL & 150' FEL, SEC. 29.
- COT EAST U-30-29HN TO BE AT 2076' FSL & 2003' FWL. BOTTOM HOLE AT 836' FSL & 150' FEL, SEC. 29.
- COT EAST V-30-29HN TO BE AT 2061' FSL & 2003' FWL. BOTTOM HOLE AT 501' FSL & 150' FEL, SEC. 29.
- COT EAST WA-30-29HN TO BE AT 2046' FSL & 2003' FWL. BOTTOM HOLE AT 384' FSL & 150' FEL, SEC. 29.
- COT EAST W-30-29HC TO BE AT 2031' FSL & 2003' FWL. BOTTOM HOLE AT 334' FSL & 150' FEL, SEC. 29.
- COT EAST X-30-29HN TO BE AT 2016' FSL & 2003' FWL. BOTTOM HOLE AT 166' FSL & 150' FEL, SEC. 29.



FIELD DATE:  
09-12-18

DRAWING DATE:  
11-01-18

BY:  
DNS

CHECKED:  
JAG

WELL NAME:  
COT 30-J PAD

SURFACE LOCATION:  
NE 1/4 SW 1/4 SEC. 30, T7N, R66W, 6TH P.M.  
WELD COUNTY, COLORADO

PREPARED FOR:

