

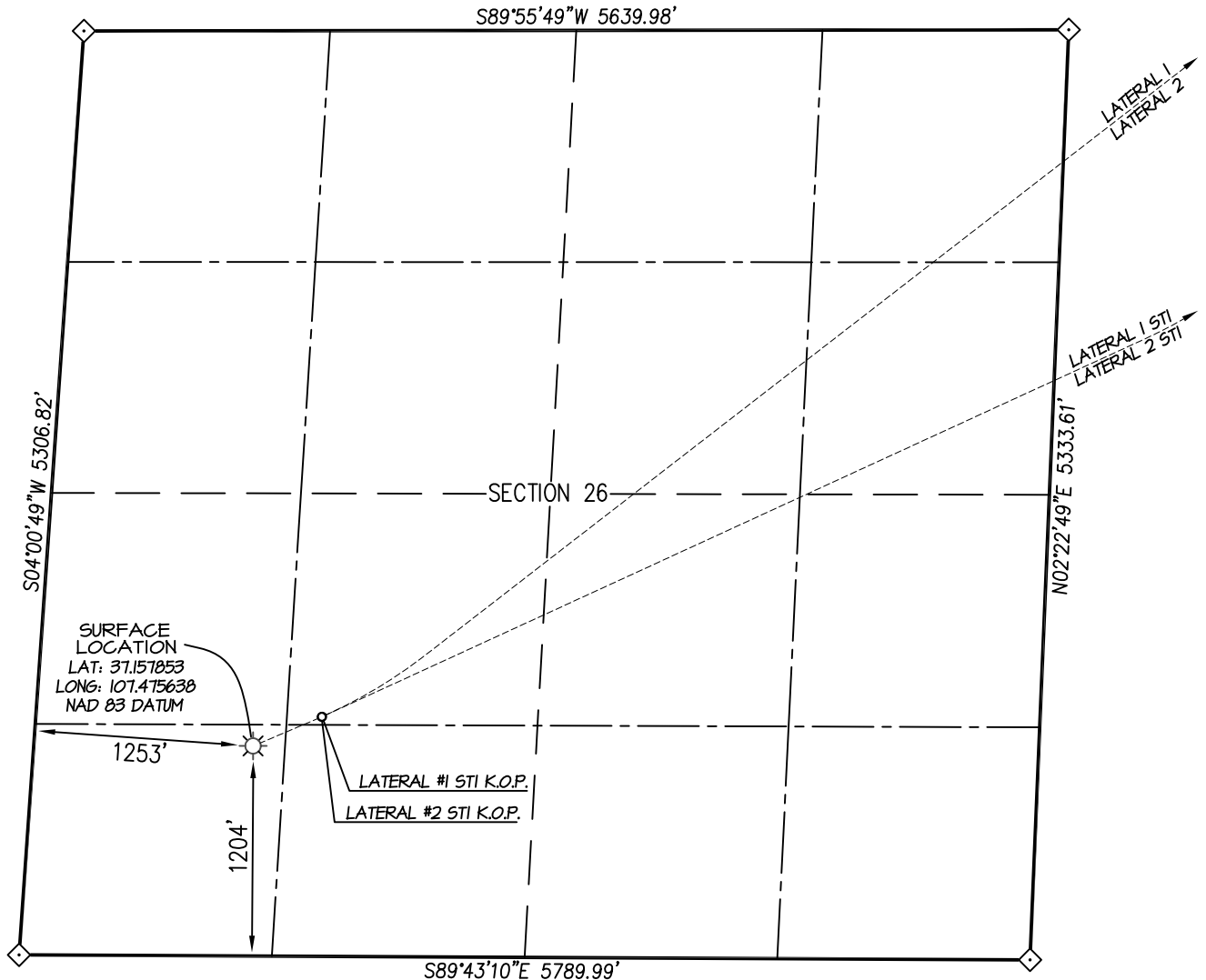
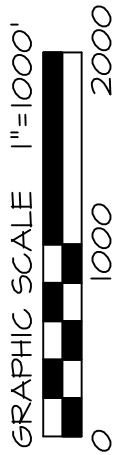
CATAMOUNT ENERGY PARTNERS: FEDERAL #26-1

SURFACE LOCATION: 1204' FSL & 1253' FWL

SECTION 26, T-34-N, R-6-W, S.U.L., N.M.P.M., ARCHULETA COUNTY, COLORADO. GROUND LEVEL ELEVATION: 7519.4'

LATERAL #1 & LATERAL #2 BOTTOM HOLE LOCATION: 1980' FNL, 210' FEL
SECTION 24, T-34-N, R-6-W, S.U.L., N.M.P.M., ARCHULETA COUNTY, COLORADO.

LATERAL #1 ST1 & LATERAL #2 ST1 BOTTOM HOLE LOCATION: 774' FSL, 63' FWL
SECTION 19, T-34-N, R-5-W, S.U.L., N.M.P.M., ARCHULETA COUNTY, COLORADO.



◇ denotes single proportion position calculated from found monuments & B.L.M. L.S.I.S. data.

NOTE:

SEE SHEET 5 OF 5 FOR COORDINATE TABLE, SURVEY NOTES, AND SURVEYOR'S CERTIFICATE.

SHEET 1 OF 5

DRAWN BY: K.R.	SURVEYED: 11/17/18	PREPARED FOR:
CHECKED BY: K.R.	DRAWN: 2/13/19	CATAMOUNT ENERGY PARTNERS
FILE NO.: CEP46WP	JOB NO. CEP46	
NORTHSTAR		
SURVEYING & MAPPING, INC.		
768 County Rd. 308		
DURANGO, CO. 81303		
(970) 385-0851		

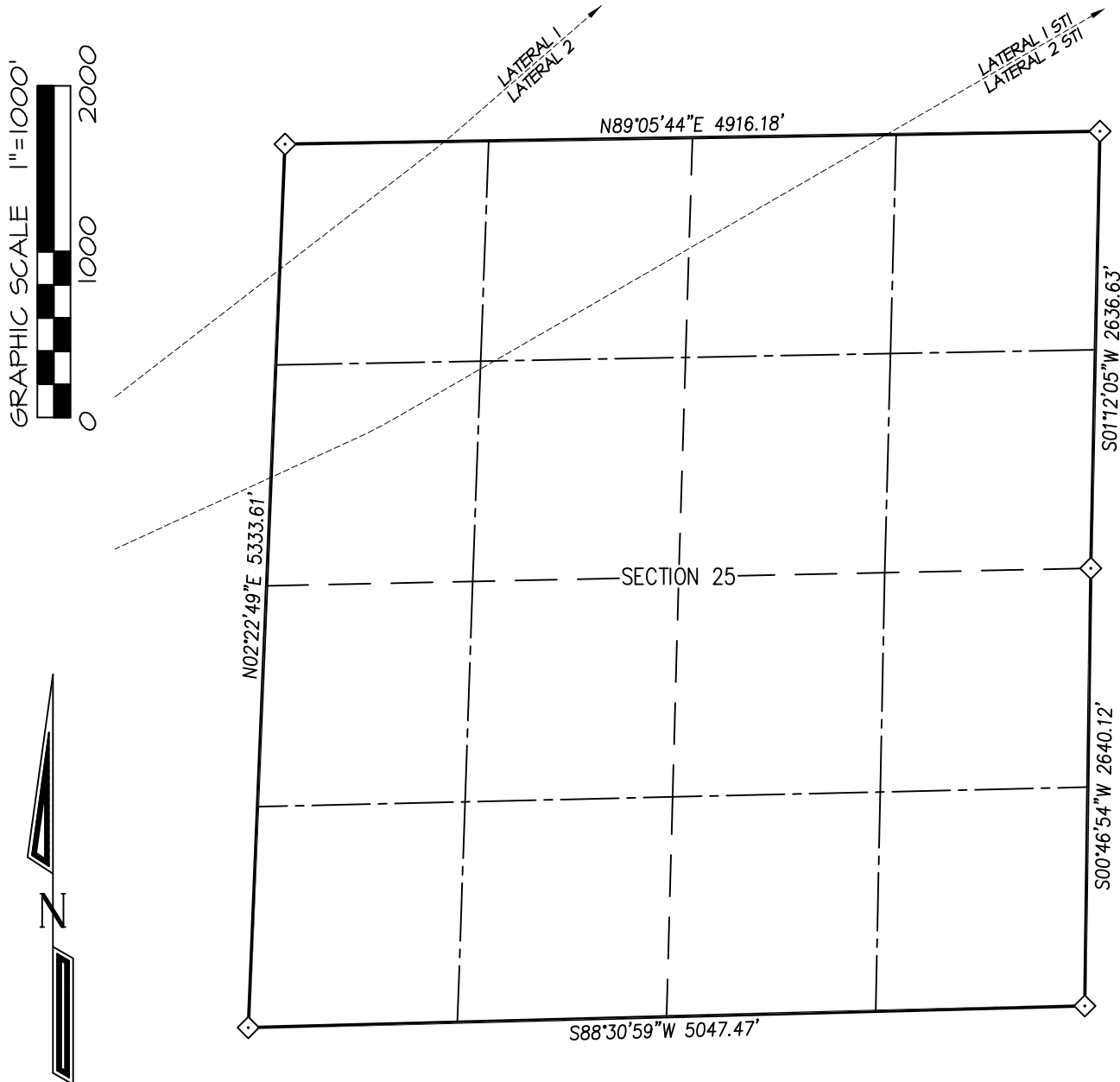
CATAMOUNT ENERGY PARTNERS: FEDERAL #26-1

SURFACE LOCATION: 1204' FSL & 1253' FWL

SECTION 26, T-34-N, R-6-W, S.U.L., N.M.P.M., ARCHULETA COUNTY, COLORADO. GROUND LEVEL ELEVATION: 7519.4'

LATERAL #1 & LATERAL #2 BOTTOM HOLE LOCATION: 1980' FNL, 210' FEL
SECTION 24, T-34-N, R-6-W, S.U.L., N.M.P.M., ARCHULETA COUNTY, COLORADO.

LATERAL #1 ST1 & LATERAL #2 ST1 BOTTOM HOLE LOCATION: 774' FSL, 63' FWL
SECTION 19, T-34-N, R-5-W, S.U.L., N.M.P.M., ARCHULETA COUNTY, COLORADO.



◊ denotes single proportion position calculated from found monuments & B.L.M. L.S.I.S. data.

NOTE:

SEE SHEET 5 OF 5 FOR COORDINATE TABLE, SURVEY NOTES, AND SURVEYOR'S CERTIFICATE.

SHEET 2 OF 5

DRAWN BY: K.R.	SURVEYED: 11/17/18	PREPARED FOR:	
	CHECKED BY: K.R.	CATAMOUNT ENERGY PARTNERS	
	FILE NO.: CEP46WP	NORTHSTAR SURVEYING & MAPPING, INC. 768 County Rd. 308 DURANGO, CO. 81303 (970) 385-0851	
	JOB NO. CEP46		

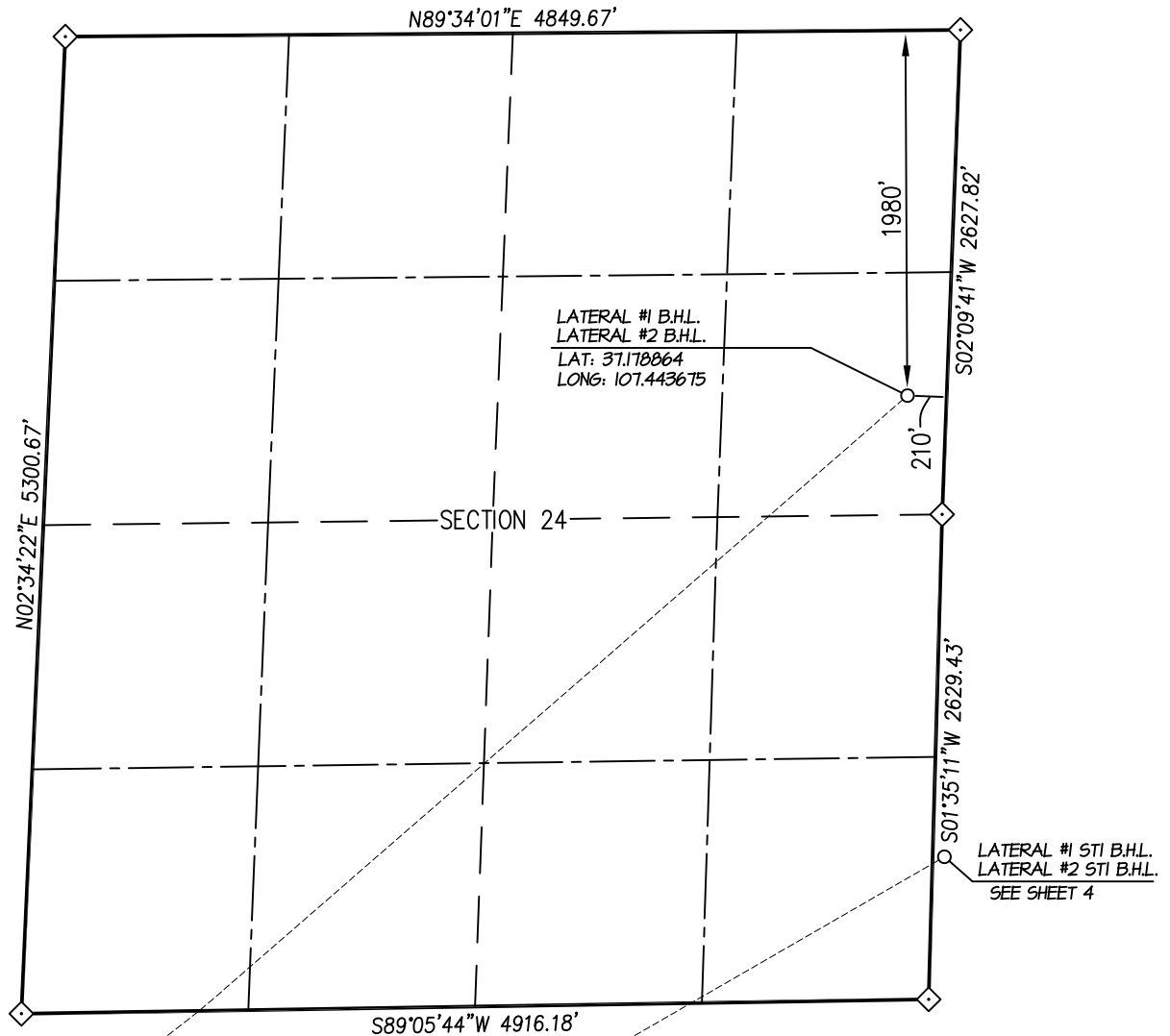
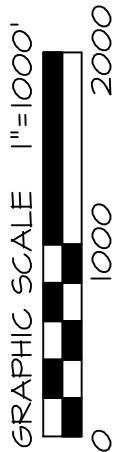
CATAMOUNT ENERGY PARTNERS: FEDERAL #26-1

SURFACE LOCATION: 1204' FSL & 1253' FWL

SECTION 26, T-34-N, R-6-W, S.U.L., N.M.P.M., ARCHULETA COUNTY, COLORADO. GROUND LEVEL ELEVATION: 7519.4'

LATERAL #1 & LATERAL #2 BOTTOM HOLE LOCATION: 1980' FNL, 210' FEL
SECTION 24, T-34-N, R-6-W, S.U.L., N.M.P.M., ARCHULETA COUNTY, COLORADO.

LATERAL #1 ST1 & LATERAL #2 ST1 BOTTOM HOLE LOCATION: 774' FSL, 63' FWL
SECTION 19, T-34-N, R-5-W, S.U.L., N.M.P.M., ARCHULETA COUNTY, COLORADO.



◇ denotes single proportion position calculated from found monuments & B.L.M. L.S.I.S. data.

NOTE:

SEE SHEET 5 OF 5 FOR COORDINATE TABLE, SURVEY NOTES, AND SURVEYOR'S CERTIFICATE.

SHEET 3 OF 5

DRAWN BY: K.R.	SURVEYED: 11/17/18	PREPARED FOR:
CHECKED BY: K.R.	DRAWN: 2/13/19	CATAMOUNT ENERGY PARTNERS
FILE NO.: CEP46WP	JOB NO. CEP46	
NORTHSTAR		
SURVEYING & MAPPING, INC.		
768 County Rd. 308		
DURANGO, CO. 81303		
(970) 385-0851		

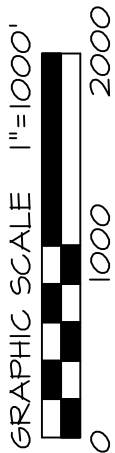
CATAMOUNT ENERGY PARTNERS: FEDERAL #26-1

SURFACE LOCATION: 1204' FSL & 1253' FWL

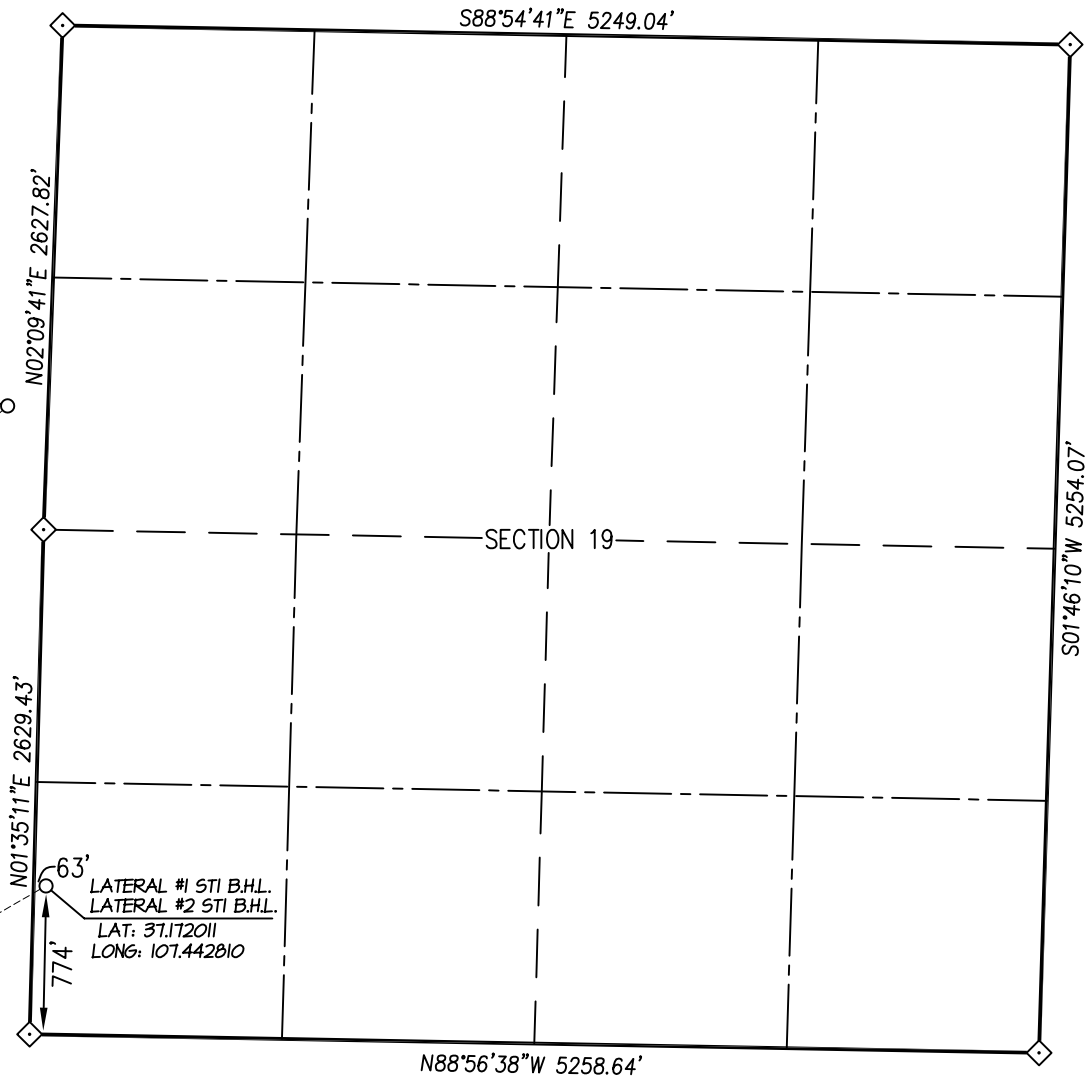
SECTION 26, T-34-N, R-6-W, S.U.L., N.M.P.M., ARCHULETA COUNTY, COLORADO. GROUND LEVEL ELEVATION: 7519.4'

LATERAL #1 & LATERAL #2 BOTTOM HOLE LOCATION: 1980' FNL, 210' FEL
SECTION 24, T-34-N, R-6-W, S.U.L., N.M.P.M., ARCHULETA COUNTY, COLORADO.

LATERAL #1 ST1 & LATERAL #2 ST1 BOTTOM HOLE LOCATION: 774' FSL, 63' FWL
SECTION 19, T-34-N, R-5-W, S.U.L., N.M.P.M., ARCHULETA COUNTY, COLORADO.



LATERAL #1 B.H.L.
LATERAL #2 B.H.L.
SEE SHEET 3



◇ denotes single proportion position calculated from found monuments & B.L.M. L.S.I.S. data.

NOTE:

SEE SHEET 5 OF 5 FOR COORDINATE TABLE,
SURVEY NOTES, AND SURVEYOR'S CERTIFICATE.

SHEET 4 OF 5

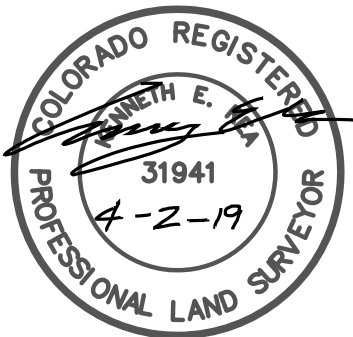
DRAWN BY: K.R.	SURVEYED: 11/17/18	PREPARED FOR:	
		CATAMOUNT ENERGY PARTNERS	
CHECKED BY: K.R.	DRAWN: 2/13/19	NORTHSTAR SURVEYING & MAPPING, INC.	
FILE NO.: CEP46WP	JOB NO. CEP46	768 County Rd. 308 DURANGO, CO. 81303 (970) 385-0851	

CATAMOUNT ENERGY PARTNERS: FEDERAL #26-1**SURFACE LOCATION: 1204' FSL & 1253' FWL****SECTION 26, T-34-N, R-6-W, S.U.L., N.M.P.M., ARCHULETA COUNTY, COLORADO. GROUND LEVEL ELEVATION: 7519.4'****LATERAL #1 & LATERAL #2 BOTTOM HOLE LOCATION: 1980' FNL, 210' FEL
SECTION 24, T-34-N, R-6-W, S.U.L., N.M.P.M., ARCHULETA COUNTY, COLORADO.****LATERAL #1 ST1 & LATERAL #2 ST1 BOTTOM HOLE LOCATION: 774' FSL, 63' FWL
SECTION 19, T-34-N, R-5-W, S.U.L., N.M.P.M., ARCHULETA COUNTY, COLORADO.**

WBC 5	CSZ NAD '83	NAD '83	TIES	SEC/TWP/RNG
SURFACE HOLE LOCATION	N (Y) = 1,184,940.15' E (X) = 2,424,279.14'	LAT: 37.157853°N LONG: 107.475638°W	FSL = 1204' FWL = 1253'	SECTION 26 T-34-N, R-6-W
TOP OF PRODUCTION	N (Y) = 1,184,940.15' E (X) = 2,424,279.14'	LAT: 37.157853°N LONG: 107.475638°W	FSL = 1204' FWL = 1253'	SECTION 26 T-34-N, R-6-W
PILOT HOLE - BOTTOM HOLE LOCATION	N (Y) = 1,184,940.15' E (X) = 2,424,279.14'	LAT: 37.157853°N LONG: 107.475638°W	FSL = 1204' FWL = 1253'	SECTION 26 T-34-N, R-6-W
LATERAL #1 K.O.P.	N (Y) = 1,184,940.15' E (X) = 2,424,279.14'	LAT: 37.157853°N LONG: 107.475638°W	FSL = 1204' FWL = 1253'	SECTION 26 T-34-N, R-6-W
BOTTOM HOLE LOCATION LATERAL #1	N (Y) = 1,192,393.51' E (X) = 2,433,751.28'	LAT: 37.178864°N LONG: 107.443675°W	FNL = 1980' FEL = 210'	SECTION 24 T-34-N, R-6-W
LATERAL #1 ST1 K.O.P.	N (Y) = 1,185,107.72' E (X) = 2,424,674.80'	LAT: 37.158336°N LONG: 107.474292°W	FSL = 1374' FWL = 1636'	SECTION 26 T-34-N, R-6-W
BOTTOM HOLE LOCATION LATERAL #1 ST1	N (Y) = 1,189,893.51' E (X) = 2,433,951.28'	LAT: 37.172011°N LONG: 107.442810°W	FSL = 774' FWL = 63'	SECTION 19 T-34-N, R-5-W
LATERAL #2 K.O.P.	N (Y) = 1,184,940.15' E (X) = 2,424,279.14'	LAT: 37.157853°N LONG: 107.475638°W	FSL = 1204' FWL = 1253'	SECTION 26 T-34-N, R-6-W
BOTTOM HOLE LOCATION LATERAL #2	N (Y) = 1,192,393.51' E (X) = 2,433,751.28'	LAT: 37.178864°N LONG: 107.443675°W	FSL = 1980' FEL = 210'	SECTION 24 T-34-N, R-6-W
LATERAL #2 ST1 K.O.P.	N (Y) = 1,185,106.26' E (X) = 2,424,671.70'	LAT: 37.158332°N LONG: 107.474303°W	FSL = 1372' FWL = 1633'	SECTION 26 T-34-N, R-6-W
BOTTOM HOLE LOCATION LATERAL #2 ST1	N (Y) = 1,189,893.51' E (X) = 2,433,951.28'	LAT: 37.172011°N LONG: 107.442810°W	FSL = 774' FWL = 63'	SECTION 19 T-34-N, R-5-W

NOTES:

1. WELL LOCATION FOOTAGE CALLS MEASURED PERPENDICULAR TO SECTION LINES.
2. WELL GPS OBSERVATION PERFORMED BY NELSON ROSS ON 11/17/18 - PDOP VALUE = 2.10
3. BEARINGS & DISTANCE SHOWN ARE FIELD MEASURED UNLESS OTHERWISE NOTED.
4. ALL MEASURED DISTANCES SHOWN ARE GRID DISTANCE WITH NO SCALE FACTOR APPLIED.
5. BEARINGS ARE BASED ON THE NORTH AMERICAN DATUM OF 1983, COLORADO SOUTH STATE PLANE COORDINATE SYSTEM, ZONE 0503.
6. ELEVATION IS BASED ON THE NORTH AMERICAN VERTICAL DATUM OF 1988 (GEOID12A).



I, KENNETH E. REA, A REGISTERED PROFESSIONAL LAND SURVEYOR IN THE STATE OF COLORADO, DO HEREBY CERTIFY THAT THE WELL LOCATION SHOWN ON THIS PLAT IS ACCURATELY PLOTTED FROM FIELD NOTES OF ACTUAL SURVEYS MADE UNDER MY DIRECT SUPERVISION, AND THAT THIS PLAT IS NOT A LAND SURVEY PLAT OR IMPROVEMENT SURVEY PLAT, AND THAT IT IS NOT TO BE RELIED UPON FOR THE ESTABLISHMENT OF FENCE, BUILDING, OR OTHER FUTURE IMPROVEMENT LINES.

SHEET 5 OF 5

SURVEYED: 11/17/18		DRAWN: 2/13/19		CHECKED BY: K.R.		FILE NO.: CEP46 WP		JOB NO.: CEP46	
PREPARED FOR:									
CATAMOUNT ENERGY PARTNERS									
NORTHSTAR SURVEYING & MAPPING, INC. 768 County Rd. 308 DURANGO, CO. 81303 (970) 385-0851									