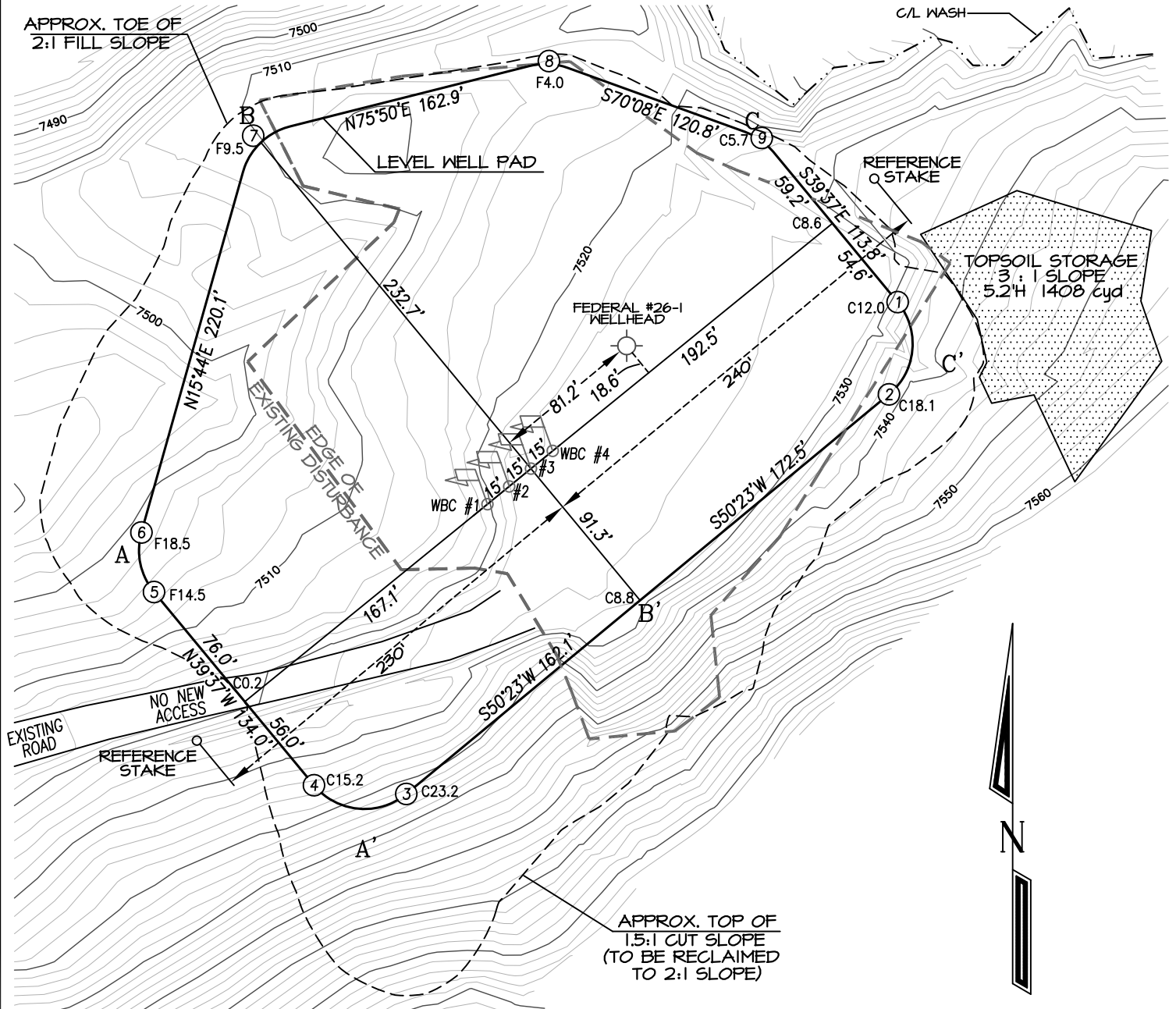


**CATAMOUNT ENERGY PARTNERS: FEDERAL #26-1**  
**1204' FSL, 1253' FWL, SECTION 26, T-34-N, R-6-W, S.U.L., N.M.P.M.,**  
**ARCHULETA COUNTY, CO. GROUND LEVEL ELEVATION: 7519.4'**  
**LAT: 37.157853, LONG: 107.475638 NAD 83 DATUM**

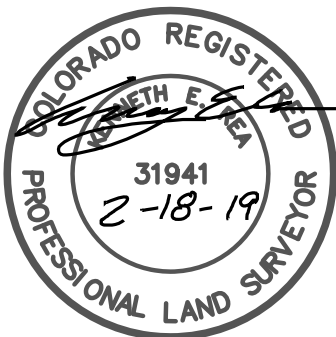
**PAD DRAWING**



ROUND CORNERS AT 35'  
RADIUS OR AS NEEDED

CONTOUR INTERVAL = 2'

GRAPHIC SCALE 1"=80'



STAMP & SIGNATURE APPLY TO  
FIGURES 2 & 3 HEREAFTER

**FIGURE 1**

**3" TOPSOIL STRIPPING**

**APPROXIMATE EARTHWORKS**

CUT: 23,151 CUBIC YARDS  
 FILL: 21,749 CUBIC YARDS  
 TOPSOIL: 1,408 CUBIC YARDS  
 NET EXPORT: 0 CUBIC YARDS

EXISTING PAD DISTURBANCE: 1.79 AC.

PROPOSED EXPANSION: 1.70 ACRES

LEVEL PAD SIZE: 2.39 ACRES

TOTAL DISTURBED AREA: 3.49 ACRES

PERMITTED AREA: 3.49 ACRES

DRAWING SCALE: 1" = 80'

DATE DRAWN: 11/18/18

NORTHSTAR SURVEYING & MAPPING, INC.

FILE NO. CEP46CFA

DRAWN BY: K.R.

CHECKED BY: K.R.