

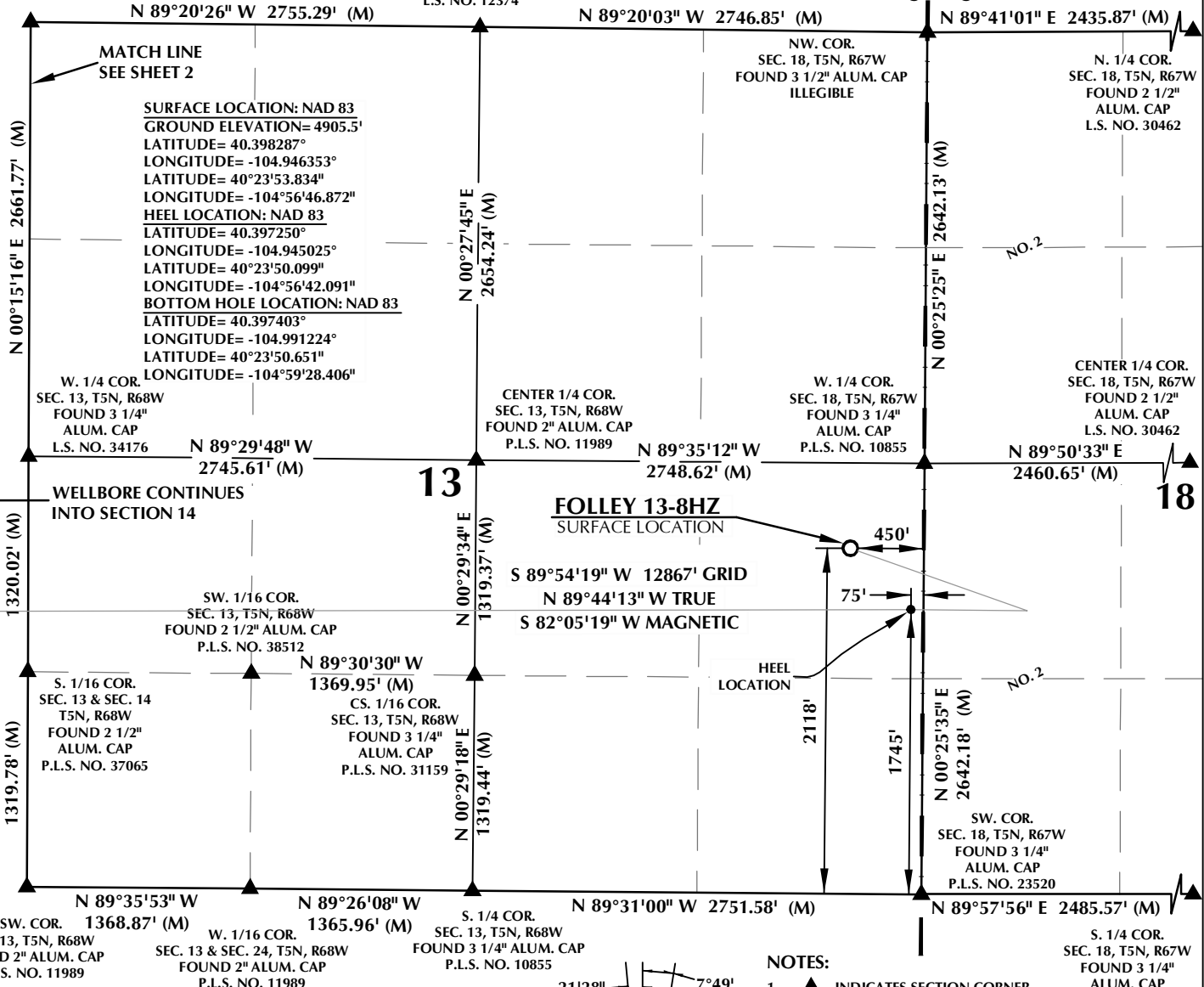
T5N, R68W

T5N, R67W

NW. COR.  
SEC. 13, T5N, R68W  
FOUND 3 1/2" ALUM. CAP  
P.L.S. NO. 36061

N. 1/4 COR.  
SEC. 13, T5N, R68W  
FOUND 2 1/2" ALUM. CAP  
L.S. NO. 12374

LARIMER  
COUNTY  
WELD  
COUNTY



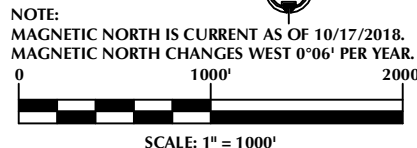
### CERTIFICATE OF SURVEYOR:

THIS IS TO CERTIFY THAT THE ABOVE PLAT WAS PREPARED FROM FIELD NOTES OF ACTUAL SURVEYS MADE BY ME OR UNDER MY SUPERVISION AND THAT THE SAME ARE TRUE AND CORRECT TO THE BEST OF MY KNOWLEDGE AND BELIEF. THIS CERTIFICATE DOES NOT REPRESENT A LAND SURVEY THAT OR IMPROVEMENT SURVEY PLAT AS DEFINED BY C.S. 38-50102 AND CANNOT BE RELIED UPON TO DETERMINE OWNERSHIP.

*Randall K. French*  
38512  
PROFESSIONAL LAND SURVEYOR

RANDALL K. FRENCH  
PROFESSIONAL LAND SURVEYOR  
COLORADO REGISTRATION NUMBER 38512

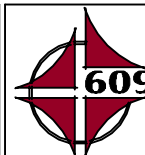
NOTE:  
ACCORDING TO COLORADO STATE LAW YOU MUST COMMENCE A LEGAL ACTION BASED UPON ANY DEFECT IN THIS SURVEY WITHIN THREE YEARS AFTER YOU FIRST DISCOVER SUCH DEFECT. IN NO EVENT MAY ANY ACTION BASED UPON ANY DEFECT IN THIS SURVEY BE COMMENCED MORE THAN TEN YEARS FROM THE DATE ON THE CERTIFICATION SHOWN HEREON.



### WELL PAD - FOLLEY 9-13HZ

FOLLEY 13-8HZ  
WELL LOCATION CERTIFICATE  
2118' FSL & 450' FEL NESE (SURFACE)  
1745' FSL & 75' FEL NESE (HEEL)  
LOCATED IN SECTION 13  
1760' FSL & 2159' FEL NWSE (BOTTOM)  
LOCATED IN SECTION 15  
T5N, R68W, 6TH P.M.  
LARIMER COUNTY, COLORADO

**Kerr-McGee Oil &  
Gas Onshore L.P.**  
1099 18th Street  
Denver, Colorado 80202



### CONSULTING, LLC

SHERIDAN OFFICE  
1095 Saberton Avenue  
Sheridan, Wyoming 82801  
Phone 307-674-0609

LOVELAND OFFICE  
6706 North Franklin Avenue  
Loveland, Colorado 80538  
Phone 970-776-4331

DRAFTED BY:	LMO	CHECKED BY:	RKF	SHEET NO:
DATE DRAFTED:	10/18/18	DATE SURVEYED:	10/17/18	1
REVISED:	1/16/19	FILE NAME:	16-47	1 OF 3

# T5N, R68W

N. 1/4 COR.  
SEC. 14, T5N, R68W  
FOUND 3 1/2" ALUM. CAP  
P.L.S. NO. 36061

NW. COR.  
SEC. 14, T5N, R68W  
FOUND 2 1/2" ALUM. CAP  
ILLEGIBLE

NE. COR.  
SEC. 14, T5N, R68W  
FOUND 3 1/2" ALUM. CAP  
P.L.S. NO. 36061

SURFACE LOCATION: NAD 83  
GROUND ELEVATION= 4905.5'  
LATITUDE= 40.398287°  
LONGITUDE= -104.946353°  
LATITUDE= 40°23'53.834"  
LONGITUDE= -104°56'46.872"  
HEEL LOCATION: NAD 83  
LATITUDE= 40.397250°  
LONGITUDE= -104.945025°  
LATITUDE= 40°23'50.099"  
LONGITUDE= -104°56'42.091"  
BOTTOM HOLE LOCATION: NAD 83  
LATITUDE= 40.397403°  
LONGITUDE= -104.991224°  
LATITUDE= 40°23'50.651"  
LONGITUDE= -104°59'28.406"

CENTER 1/4 COR.  
SEC. 14, T5N, R68W  
FOUND 2 1/2" ALUM. CAP  
P.L.S. NO. 38065

MATCH LINE  
SEE SHEET 1

W. 1/4 COR.  
SEC. 14, T5N, R68W  
FOUND 2 1/2" ALUM. CAP  
P.L.S. NO. 38065

E. 1/4 COR.  
SEC. 14, T5N, R68W  
FOUND 3 1/4" ALUM. CAP  
L.S. NO. 34176

S 89°54'19" W 12867' GRID  
N 89°44'13" W TRUE  
S 82°05'19" W MAGNETIC

S. 1/16 COR.  
SEC. 13 & SEC. 14  
T5N, R68W  
FOUND 2 1/2" ALUM. CAP  
L.S. NO. 37065

CS. 1/16 COR.  
SEC. 14, T5N, R68W  
FOUND 2" ALUM. CAP  
L.S. NO. 20676

E. 1/16 COR.  
SEC. 14 & SEC. 23  
T5N, R68W  
FOUND 3 1/4" ALUM. CAP  
L.S. NO. 16847

SE. COR.  
SEC. 14, T5N, R68W  
FOUND 2" ALUM. CAP  
P.L.S. NO. 11989

SW. COR.  
SEC. 14, T5N, R68W  
FOUND 2 1/2" ALUM. CAP  
L.S. NO. 12374

S. 1/4 COR.  
SEC. 14, T5N, R68W  
FOUND 2 1/2" ALUM. CAP  
P.L.S. NO. 38512

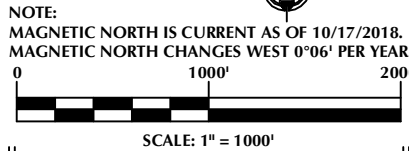
## CERTIFICATE OF SURVEYOR:

THIS IS TO CERTIFY THAT THE ABOVE PLAT WAS PREPARED FROM FIELD NOTES OF ACTUAL SURVEYS MADE BY ME OR UNDER MY SUPERVISION AND THAT THE SAME ARE TRUE AND CORRECT TO THE BEST OF MY KNOWLEDGE AND BELIEF. THIS CERTIFICATE DOES NOT REPRESENT A LAND SURVEY PLAT OR IMPROVEMENT SURVEY PLAT AS DEFINED BY C.R.S. 38-50-102 AND CANNOT BE RELIED UPON TO DETERMINE OWNERSHIP.

*Randall K. French*  
38512  
PROFESSIONAL LAND SURVEYOR

RANDALL K. FRENCH  
PROFESSIONAL LAND SURVEYOR  
COLORADO REGISTRATION NUMBER 38512  
1/16/19

NOTICE:  
ACCORDING TO COLORADO STATE LAW YOU MUST COMMENCE A LEGAL ACTION BASED UPON ANY DEFECT IN THIS SURVEY WITHIN THREE YEARS AFTER YOU FIRST DISCOVER SUCH DEFECT. IN NO EVENT MAY ANY ACTION BASED UPON ANY DEFECT IN THIS SURVEY BE COMMENCED MORE THAN TEN YEARS FROM THE DATE ON THE CERTIFICATION SHOWN HEREON.



## NOTES:

- ▲ INDICATES SECTION CORNER.
- INDICATES CALCULATED CORNER.
- ELEVATION BASED ON NAVD88 (GEOID12B).
- BASIS OF BEARING DERIVED FROM COLORADO COORDINATE SYSTEM OF 1983 NORTH ZONE.
- ALL MEASURED DISTANCES ARE GRID.
- COMBINED SCALE FACTOR: .99972725 CALCULATED FROM THE N. 1/4 CORNER OF SECTION 13, T5N, R68W.
- OPERATOR: ROB WILSON / PDOP = 1.4.
- SEE ADDENDUM TO WELL LOCATION CERTIFICATE FOR EXISTING IMPROVEMENTS WITHIN 500' OF THE WELL PAD.
- WELL FOOTAGES ARE MEASURED AT RIGHT ANGLES TO THE SECTION LINES.
- THE BOTTOM OF HOLE BEARS S89°54'19"W, 12867' FROM THE HEEL LOCATION.

## WELL PAD - FOLLEY 9-13HZ

FOLLEY 13-8HZ  
WELL LOCATION CERTIFICATE  
2118' FSL & 450' FEL NESE (SURFACE)  
1745' FSL & 75' FEL NESE (HEEL)  
LOCATED IN SECTION 13  
1760' FSL & 2159' FEL NWSE (BOTTOM)  
LOCATED IN SECTION 15  
T5N, R68W, 6TH P.M.  
LARIMER COUNTY, COLORADO

Kerr-McGee Oil &  
Gas Onshore L.P.  
1099 18th Street  
Denver, Colorado 80202



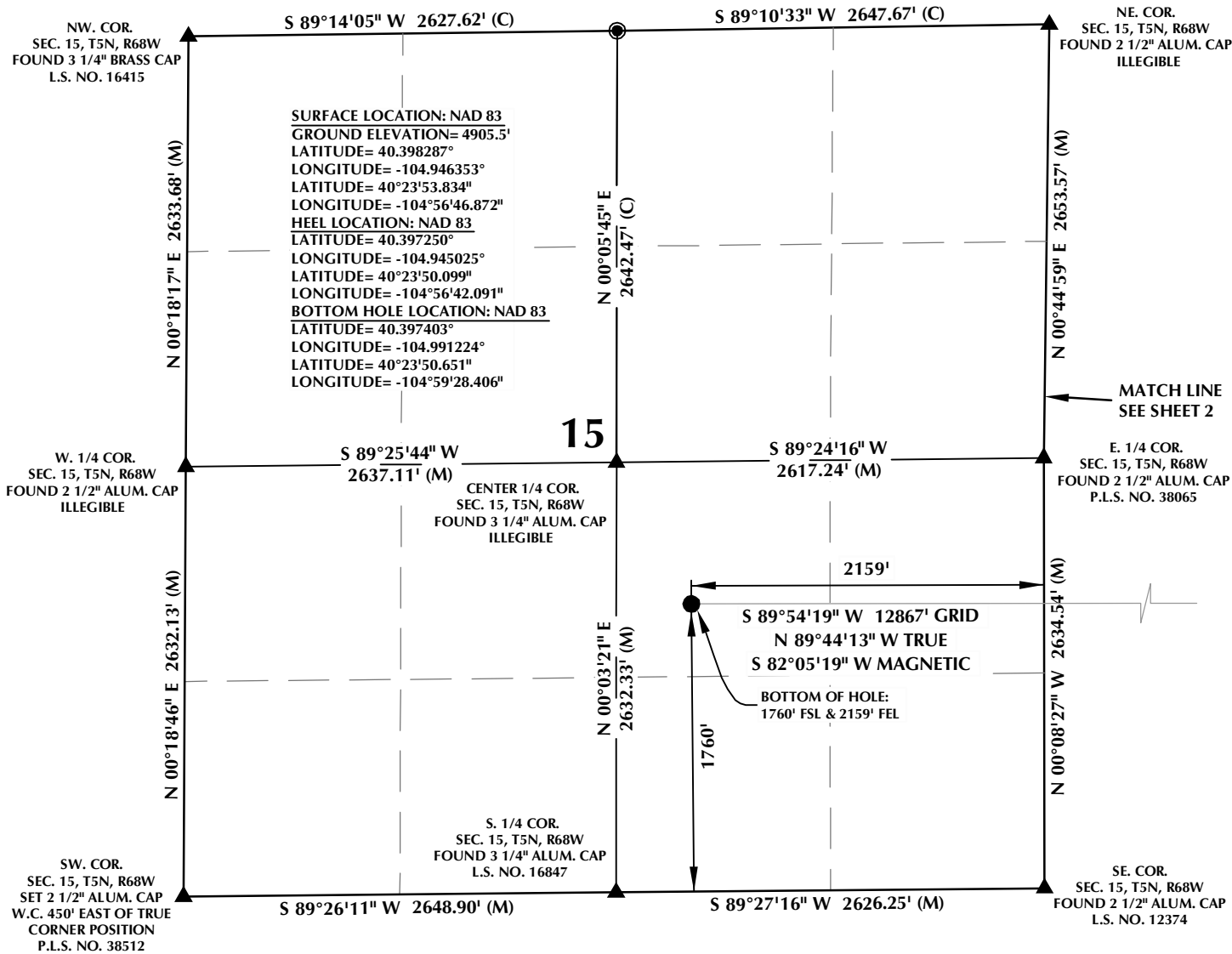
## CONSULTING, LLC

SHERIDAN OFFICE  
1095 Saberton Avenue  
Sheridan, Wyoming 82801  
Phone 307-674-0609

LOVELAND OFFICE  
6706 North Franklin Avenue  
Loveland, Colorado 80538  
Phone 970-776-4331

DRAFTED BY:	LMO	CHECKED BY:	RKF	SHEET NO:
DATE DRAFTED:	10/18/18	DATE SURVEYED:	10/17/18	2
REVISED:	1/16/19	FILE NAME:	16-47	2 OF 3

# T5N, R68W



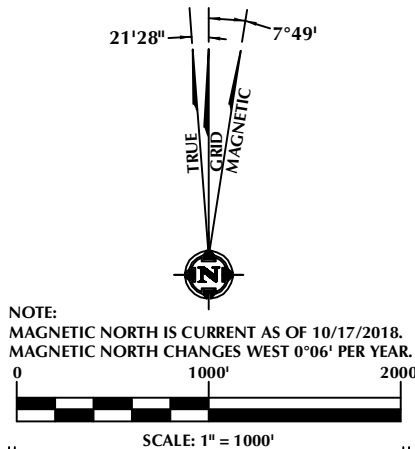
## CERTIFICATE OF SURVEYOR:

THIS IS TO CERTIFY THAT THE ABOVE PLAT WAS PREPARED FROM FIELD NOTES OF ACTUAL SURVEYS MADE BY ME OR UNDER MY SUPERVISION AND THAT THE SAME ARE TRUE AND CORRECT TO THE BEST OF MY KNOWLEDGE AND BELIEF. THIS CERTIFICATE DOES NOT REPRESENT A LAND SURVEY PLAT OR IMPROVEMENT SURVEY PLAT AS DEFINED BY C.S. 38-50102 AND CANNOT BE RELIED UPON TO DETERMINE OWNERSHIP.

*Randall K. French*  
 RANDALL K. FRENCH  
 PROFESSIONAL LAND SURVEYOR  
 COLORADO REGISTRATION NUMBER 38512

1/16/19  
 RANDALL K. FRENCH  
 PROFESSIONAL LAND SURVEYOR  
 COLORADO REGISTRATION NUMBER 38512

**NOTICE:**  
 ACCORDING TO COLORADO STATE LAW YOU MUST COMMENCE LEGAL ACTION BASED UPON ANY DEFECT IN THIS SURVEY WITHIN THREE YEARS AFTER YOU FIRST DISCOVER SUCH DEFECT. IN NO EVENT MAY ANY ACTION BASED UPON ANY DEFECT IN THIS SURVEY BE COMMENCED MORE THAN TEN YEARS FROM THE DATE ON THE CERTIFICATION SHOWN HEREON.



## NOTES:

- ▲ INDICATES SECTION CORNER.
- INDICATES CALCULATED CORNER.
- ELEVATION BASED ON NAVD88 (GEOID12B).
- BASIS OF BEARING DERIVED FROM COLORADO COORDINATE SYSTEM OF 1983 NORTH ZONE.
- ALL MEASURED DISTANCES ARE GRID.  
 COMBINED SCALE FACTOR: .99972725 CALCULATED FROM THE N. 1/4 CORNER OF SECTION 13, T5N, R68W.
- OPERATOR: ROB WILSON / PDOP = 1.4.
- SEE ADDENDUM TO WELL LOCATION CERTIFICATE FOR EXISTING IMPROVEMENTS WITHIN 500' OF THE WELL PAD.
- WELL FOOTAGES ARE MEASURED AT RIGHT ANGLES TO THE SECTION LINES.
- THE BOTTOM OF HOLE BEARS S89°54'19"W, 12867' FROM THE HEEL LOCATION.

## WELL PAD - FOLLEY 9-13HZ

**FOLLEY 13-8HZ**  
**WELL LOCATION CERTIFICATE**  
 2118' FSL & 450' FEL NESE (SURFACE)  
 1745' FSL & 75' FEL NESE (HEEL)  
 LOCATED IN SECTION 13  
 1760' FSL & 2159' FEL NWSE (BOTTOM)  
 LOCATED IN SECTION 15  
 T5N, R68W, 6TH P.M.  
 LARIMER COUNTY, COLORADO

**Kerr-McGee Oil &  
 Gas Onshore L.P.**  
 1099 18th Street  
 Denver, Colorado 80202



## CONSULTING, LLC

**SHERIDAN OFFICE**  
 1095 Saberton Avenue  
 Sheridan, Wyoming 82801  
 Phone 307-674-0609

**LOVELAND OFFICE**  
 6706 North Franklin Avenue  
 Loveland, Colorado 80538  
 Phone 970-776-4331

DRAFTED BY:	LMO	CHECKED BY:	RKF	SHEET NO:
DATE DRAFTED:	10/18/18	DATE SURVEYED:	10/17/18	3
REVISED:	1/16/19	FILE NAME:	16-47	3 OF 3