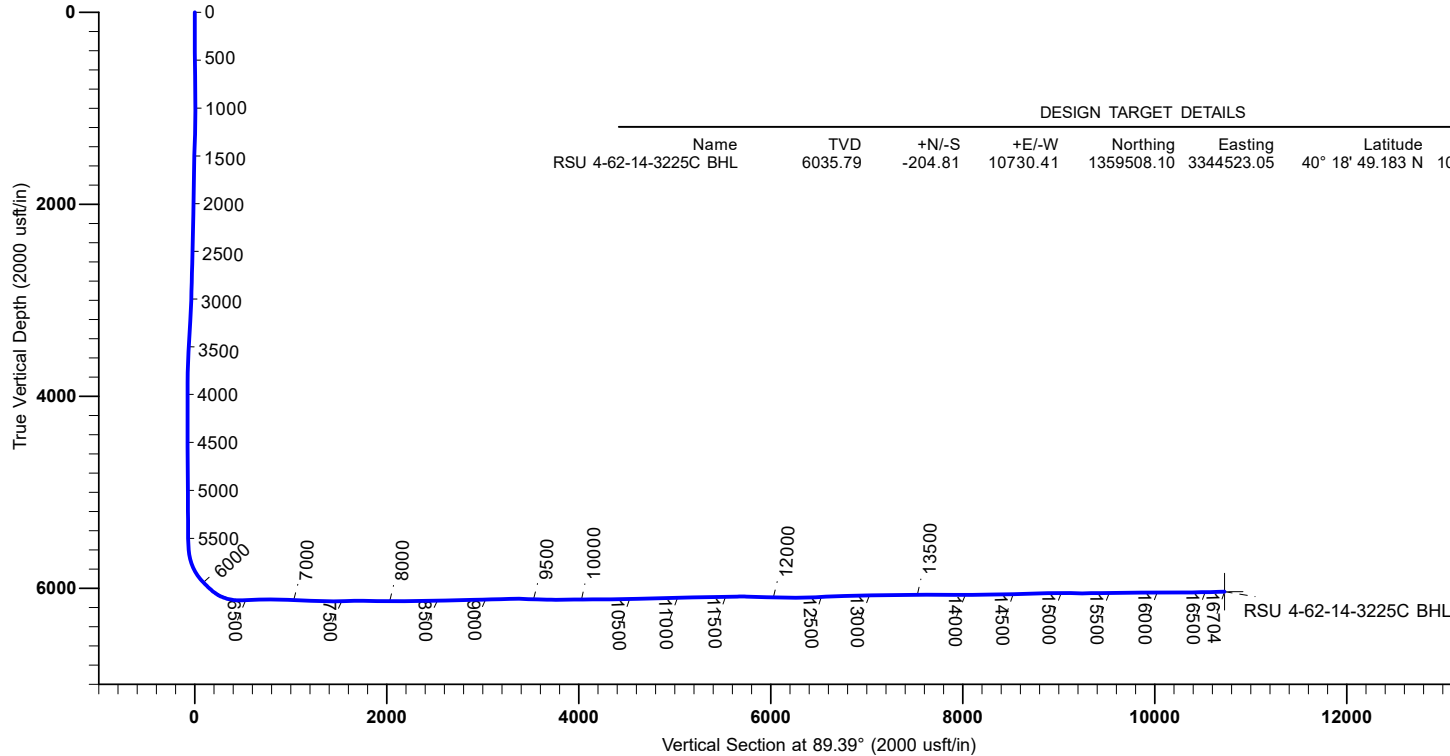
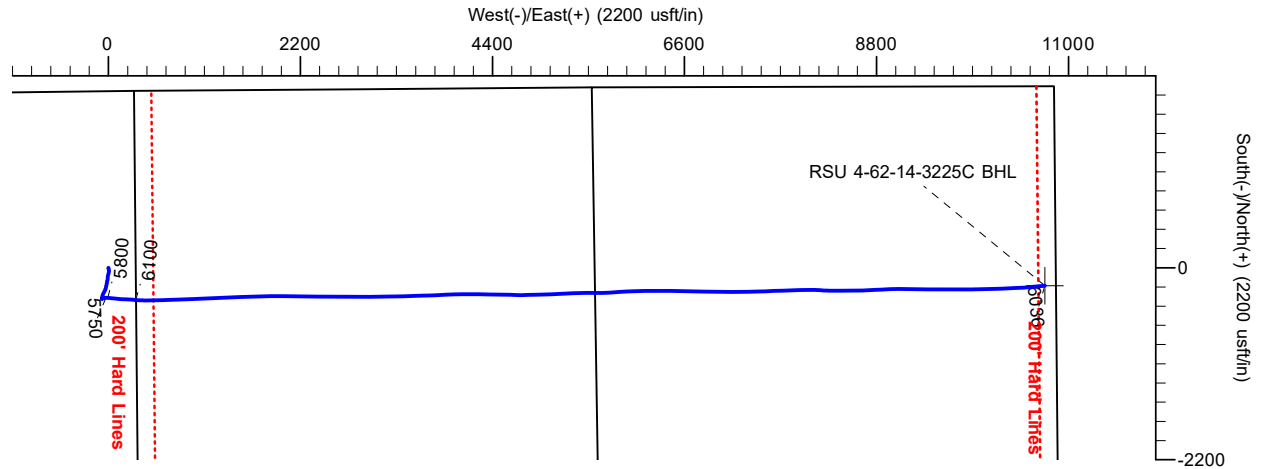


HIGHPOINT RESOURCES

Project: Weld County, CO (NAD83) CONZ US
 Site: RSU Anschutz Fed 4-62-14_13
 Well: RSU Anschutz Fed 4-62-14-3225C
 Wellbore: 4-62-14-3225C
 Design: 4-62-14-3225C (AsDrilled)



4512+16.5 @ 4528.50usft (Planning)
 North American Datum 1983



DESIGN TARGET DETAILS									
Name	TVD	+N/-S	+E/-W	Northing	Easting	Latitude	Longitude		
RSU 4-62-14-3225C BHL	6035.79	-204.81	10730.41	1359508.10	3344523.05	40° 18' 49.183 N	104° 15' 52.246 W		



Azimuths to True North
 Magnetic North: 7.80°

Magnetic Field
 Strength: 52234.8nT
 Dip Angle: 66.82°
 Date: 11/21/2018
 Model: IGRF2015

To convert a Magnetic Direction to a True Direction, Add 7.80° East
 Magnetic North is 7.03° East of Grid North (Magnetic Convergence)
 Magnetic North is 7.80° East of True North (Magnetic Declination)

Survey Report

Company:	HIGHPOINT RESOURCES	Local Co-ordinate Reference:	Well RSU Anschutz Fed 4-62-14-3225C
Project:	Weld County, CO (NAD83) CONZ US	TVD Reference:	4512+16.5 @ 4528.50usft (Planning)
Site:	RSU Anschutz Fed 4-62-14_13	MD Reference:	4512+16.5 @ 4528.50usft (Planning)
Well:	RSU Anschutz Fed 4-62-14-3225C	North Reference:	True
Wellbore:	4-62-14-3225C	Survey Calculation Method:	Minimum Curvature
Design:	4-62-14-3225C (AsDrilled)	Database:	PANTHER_EDM

Project	Weld County, CO (NAD83) CONZ US		
Map System:	US State Plane 1983	System Datum:	Mean Sea Level
Geo Datum:	North American Datum 1983		
Map Zone:	Colorado Northern Zone		

Site		RSU Anschutz Fed 4-62-14_13			
Site Position:		Northing:	1,359,569.08 usft	Latitude:	40° 18' 51.240 N
From:	Lat/Long	Easting:	3,333,791.62 usft	Longitude:	104° 18' 10.760 W
Position Uncertainty:	0.00 usft	Slot Radius:	13.20 in	Grid Convergence:	0.77 °

Well	RSU Anschutz Fed 4-62-14-3225C					
Well Position	+N/-S	0.00 usft	Northing:	1,359,568.05 usft	Latitude:	40° 18' 51.230 N
	+E/-W	0.00 usft	Easting:	3,333,790.86 usft	Longitude:	104° 18' 10.770 W
Position Uncertainty		0.00 usft	Wellhead Elevation:	usft	Ground Level:	4,512.00 usft

Wellbore	4-62-14-3225C				
Magnetics	Model Name	Sample Date	Declination (°)	Dip Angle (°)	Field Strength (nT)
	IGRF2015	11/21/18	7.80	66.82	52,234.84804235

Design	4-62-14-3225C (AsDrilled)				
Audit Notes:					
Version:	1.0	Phase:	ACTUAL	Tie On Depth:	0.00
Vertical Section:	Depth From (TVD) (usft)	+N/-S (usft)	+E/-W (usft)	Direction (°)	
	0.00	0.00	0.00	89.39	

Survey Program	Date	12/10/18			
From (usft)	To (usft)	Survey (Wellbore)	Tool Name	Description	
143.00	815.00	Survey #1 (4-62-14-3225C)	MWD+IFR1+MS	OWSG MWD + IFR1 + Multi-Station Correction	
890.00	16,636.50	Survey #2 (4-62-14-3225C)	MWD+IFR1+MS	OWSG MWD + IFR1 + Multi-Station Correction	
16,703.50	16,703.50	Survey #3 (4-62-14-3225C)	Projection	Projection	

Survey										
Measured Depth (usft)	Inclination (°)	Azimuth (°)	Vertical Depth (usft)	+N/-S (usft)	+E/-W (usft)	Vertical Section (usft)	Dogleg Rate (°/100ft)	Build Rate (°/100ft)	Turn Rate (°/100ft)	
0.00	0.00	0.00	0.00	0.00	0.00	0.00	0.00	0.00	0.00	
RSU 4-62-14-3225C SHL - RSU 4-62-11-4841CN SHL										
143.00	0.20	124.80	143.00	-0.14	0.20	0.20	0.14	0.14	0.00	
235.00	1.30	161.30	234.99	-1.22	0.67	0.66	1.25	1.20	39.67	
327.00	1.60	175.50	326.96	-3.49	1.11	1.07	0.51	0.33	15.43	
420.00	2.30	169.60	419.91	-6.62	1.55	1.47	0.78	0.75	-6.34	
511.00	2.20	175.10	510.84	-10.16	2.02	1.92	0.26	-0.11	6.04	
603.00	2.90	170.50	602.75	-14.21	2.56	2.41	0.79	0.76	-5.00	
696.00	3.10	168.00	695.62	-18.99	3.47	3.27	0.26	0.22	-2.69	

Survey Report

Company:	HIGHPOINT RESOURCES	Local Co-ordinate Reference:	Well RSU Anschutz Fed 4-62-14-3225C
Project:	Weld County, CO (NAD83) CONZ US	TVD Reference:	4512+16.5 @ 4528.50usft (Planning)
Site:	RSU Anschutz Fed 4-62-14_13	MD Reference:	4512+16.5 @ 4528.50usft (Planning)
Well:	RSU Anschutz Fed 4-62-14-3225C	North Reference:	True
Wellbore:	4-62-14-3225C	Survey Calculation Method:	Minimum Curvature
Design:	4-62-14-3225C (AsDrilled)	Database:	PANTHER_EDM

Survey										
Measured Depth (usft)	Inclination (°)	Azimuth (°)	Vertical Depth (usft)	+N/-S (usft)	+E/-W (usft)	Vertical Section (usft)	Dogleg Rate (°/100ft)	Build Rate (°/100ft)	Turn Rate (°/100ft)	
788.00	3.20	168.30	787.48	-23.94	4.51	4.25	0.11	0.11	0.33	
815.00	3.30	167.20	814.44	-25.44	4.83	4.56	0.44	0.37	-4.07	
890.00	3.40	168.70	889.31	-29.72	5.75	5.43	0.18	0.13	2.00	
1,027.00	3.60	166.40	1,026.05	-37.89	7.55	7.15	0.18	0.15	-1.68	
1,120.00	5.80	196.90	1,118.75	-45.22	6.88	6.39	3.50	2.37	32.80	
1,212.00	6.20	196.50	1,210.24	-54.43	4.11	3.53	0.44	0.43	-0.43	
1,304.00	6.20	194.50	1,301.70	-64.01	1.46	0.78	0.23	0.00	-2.17	
1,396.00	5.90	194.00	1,393.19	-73.40	-0.93	-1.71	0.33	-0.33	-0.54	
1,489.00	5.40	196.30	1,485.74	-82.24	-3.31	-4.19	0.59	-0.54	2.47	
1,584.00	6.20	193.80	1,580.25	-91.51	-5.79	-6.77	0.88	0.84	-2.63	
1,679.00	6.20	186.00	1,674.70	-101.60	-7.55	-8.63	0.89	0.00	-8.21	
1,774.00	5.70	177.80	1,769.19	-111.42	-7.91	-9.09	1.04	-0.53	-8.63	
1,870.00	6.80	189.80	1,864.62	-121.78	-8.69	-9.99	1.77	1.15	12.50	
1,966.00	6.60	188.90	1,959.97	-132.83	-10.51	-11.93	0.24	-0.21	-0.94	
2,062.00	6.90	186.20	2,055.30	-144.01	-11.99	-13.52	0.45	0.31	-2.81	
2,157.00	7.00	196.10	2,149.61	-155.25	-14.21	-15.86	1.26	0.11	10.42	
2,252.00	6.90	192.70	2,243.91	-166.38	-17.07	-18.84	0.45	-0.11	-3.58	
2,348.00	6.90	190.10	2,339.21	-177.68	-19.35	-21.24	0.33	0.00	-2.71	
2,443.00	6.50	186.30	2,433.56	-188.64	-20.94	-22.95	0.63	-0.42	-4.00	
2,539.00	6.80	192.40	2,528.92	-199.60	-22.76	-24.88	0.80	0.31	6.35	
2,634.00	6.30	192.50	2,623.30	-210.18	-25.09	-27.33	0.53	-0.53	0.11	
2,730.00	6.20	186.80	2,718.73	-220.47	-26.85	-29.19	0.65	-0.10	-5.94	
2,825.00	5.70	196.90	2,813.22	-230.08	-28.83	-31.27	1.22	-0.53	10.63	
2,920.00	5.40	200.60	2,907.77	-238.77	-31.77	-34.31	0.49	-0.32	3.89	
3,016.00	4.70	200.30	3,003.40	-246.69	-34.72	-37.35	0.73	-0.73	-0.31	
3,112.00	6.60	202.30	3,098.93	-255.49	-38.18	-40.90	1.99	1.98	2.08	
3,207.00	7.10	203.80	3,193.25	-265.91	-42.62	-45.45	0.56	0.53	1.58	
3,303.00	7.10	208.30	3,288.52	-276.56	-47.83	-50.77	0.58	0.00	4.69	
3,398.00	7.30	207.60	3,382.77	-287.08	-53.41	-56.46	0.23	0.21	-0.74	
3,494.00	7.00	211.40	3,478.02	-297.48	-59.28	-62.45	0.58	-0.31	3.96	
3,590.00	5.70	199.00	3,573.44	-306.98	-63.88	-67.15	1.96	-1.35	-12.92	
3,685.00	5.50	196.00	3,667.98	-315.82	-66.67	-70.03	0.37	-0.21	-3.16	
3,781.00	5.40	195.40	3,763.55	-324.59	-69.14	-72.59	0.12	-0.10	-0.62	
3,876.00	4.90	194.30	3,858.16	-332.83	-71.33	-74.87	0.54	-0.53	-1.16	
3,971.00	4.00	176.90	3,952.88	-340.08	-72.15	-75.77	1.70	-0.95	-18.32	
4,066.00	3.90	174.40	4,047.66	-346.60	-71.66	-75.35	0.21	-0.11	-2.63	
4,162.00	2.50	184.70	4,143.50	-351.94	-71.51	-75.26	1.57	-1.46	10.73	
4,258.00	0.50	198.10	4,239.47	-354.42	-71.82	-75.58	2.10	-2.08	13.96	
4,354.00	0.40	167.00	4,335.46	-355.14	-71.87	-75.65	0.27	-0.10	-32.40	
4,449.00	0.60	3.20	4,430.46	-354.97	-71.77	-75.54	1.04	0.21	-172.42	
4,545.00	0.70	40.70	4,526.46	-354.02	-71.36	-75.12	0.45	0.10	39.06	
4,640.00	0.80	64.30	4,621.45	-353.30	-70.38	-74.14	0.34	0.11	24.84	
4,735.00	0.70	42.20	4,716.44	-352.58	-69.39	-73.14	0.32	-0.11	-23.26	

Survey Report

Company:	HIGHPOINT RESOURCES	Local Co-ordinate Reference:	Well RSU Anschutz Fed 4-62-14-3225C
Project:	Weld County, CO (NAD83) CONZ US	TVD Reference:	4512+16.5 @ 4528.50usft (Planning)
Site:	RSU Anschutz Fed 4-62-14_13	MD Reference:	4512+16.5 @ 4528.50usft (Planning)
Well:	RSU Anschutz Fed 4-62-14-3225C	North Reference:	True
Wellbore:	4-62-14-3225C	Survey Calculation Method:	Minimum Curvature
Design:	4-62-14-3225C (AsDrilled)	Database:	PANTHER_EDM

Survey									
Measured Depth (usft)	Inclination (°)	Azimuth (°)	Vertical Depth (usft)	+N/-S (usft)	+E/-W (usft)	Vertical Section (usft)	Dogleg Rate (°/100ft)	Build Rate (°/100ft)	Turn Rate (°/100ft)
4,830.00	0.40	22.40	4,811.44	-351.84	-68.88	-72.62	0.37	-0.32	-20.84
4,926.00	0.60	34.30	4,907.43	-351.12	-68.47	-72.20	0.23	0.21	12.40
5,021.00	0.50	58.60	5,002.43	-350.49	-67.83	-71.56	0.26	-0.11	25.58
5,117.00	0.50	45.60	5,098.43	-349.98	-67.18	-70.90	0.12	0.00	-13.54
5,213.00	0.60	21.10	5,194.42	-349.22	-66.70	-70.41	0.26	0.10	-25.52
5,308.00	0.70	43.00	5,289.41	-348.33	-66.12	-69.83	0.28	0.11	23.05
5,404.00	0.60	21.60	5,385.41	-347.43	-65.54	-69.23	0.27	-0.10	-22.29
5,499.00	0.40	36.80	5,480.41	-346.71	-65.15	-68.84	0.25	-0.21	16.00
5,594.00	4.20	93.90	5,575.31	-346.68	-61.48	-65.17	4.21	4.00	60.11
5,690.00	10.80	83.90	5,670.44	-345.96	-49.02	-52.70	6.98	6.87	-10.42
5,785.00	19.70	88.10	5,762.01	-344.48	-24.11	-27.78	9.43	9.37	4.42
5,881.00	34.70	96.40	5,847.18	-347.00	19.48	15.78	16.08	15.62	8.65
5,977.00	42.50	96.00	5,922.15	-353.45	78.97	75.21	8.13	8.12	-0.42
6,005.11	43.53	95.23	5,942.70	-355.32	98.06	94.27	4.12	3.66	-2.75
RSU 4-62-14-3225C KOP									
6,072.00	46.00	93.50	5,990.19	-358.89	145.02	141.19	4.12	3.69	-2.58
6,168.00	54.20	92.70	6,051.72	-362.84	218.50	214.62	8.57	8.54	-0.83
6,263.00	70.00	94.50	6,096.03	-368.19	302.01	298.08	16.71	16.63	1.89
6,359.00	81.00	92.40	6,120.04	-373.73	394.64	390.64	11.65	11.46	-2.19
6,454.00	92.00	89.50	6,125.83	-375.29	489.30	485.27	11.97	11.58	-3.05
6,465.00	92.40	89.50	6,125.41	-375.19	500.29	496.27	3.64	3.64	0.00
6,480.80	92.39	89.20	6,124.75	-375.01	516.07	512.05	1.91	-0.09	-1.91
RSU 4-62-14-3225C LP p3									
6,481.74	92.39	89.18	6,124.71	-375.00	517.02	512.99	1.91	-0.09	-1.91
RSU 4-62-14-3225C LP p2									
6,483.13	92.38	89.15	6,124.65	-374.98	518.40	514.38	1.91	-0.09	-1.91
RSU 4-62-14-3225C LP									
6,580.00	92.30	87.30	6,120.69	-371.99	615.14	611.14	1.91	-0.09	-1.91
6,675.00	91.10	87.00	6,117.87	-367.26	709.98	706.03	1.30	-1.26	-0.32
6,771.00	90.00	88.20	6,116.95	-363.24	805.89	801.97	1.70	-1.15	1.25
6,865.00	88.40	87.90	6,118.26	-360.05	899.82	895.94	1.73	-1.70	-0.32
6,961.00	88.10	87.90	6,121.19	-356.53	995.71	991.86	0.31	-0.31	0.00
7,057.00	87.90	88.00	6,124.54	-353.10	1,091.59	1,087.77	0.23	-0.21	0.10
7,152.00	87.50	87.90	6,128.36	-349.70	1,186.45	1,182.66	0.43	-0.42	-0.11
7,248.00	88.00	87.90	6,132.13	-346.19	1,282.31	1,278.56	0.52	0.52	0.00
7,344.00	88.70	87.20	6,134.89	-342.08	1,378.19	1,374.47	1.03	0.73	-0.73
7,439.00	90.60	87.60	6,135.47	-337.78	1,473.08	1,469.40	2.04	2.00	0.42
7,535.00	91.50	87.60	6,133.71	-333.76	1,568.98	1,565.34	0.94	0.94	0.00
7,630.00	91.20	86.70	6,131.47	-329.03	1,663.83	1,660.24	1.00	-0.32	-0.95
7,725.00	90.00	88.70	6,130.48	-325.22	1,758.75	1,755.18	2.46	-1.26	2.11
7,821.00	89.10	89.90	6,131.23	-324.05	1,854.73	1,851.18	1.56	-0.94	1.25
7,916.00	89.00	90.70	6,132.81	-324.55	1,949.72	1,946.15	0.85	-0.11	0.84
8,011.00	89.40	91.70	6,134.13	-326.54	2,044.69	2,041.09	1.13	0.42	1.05
8,107.00	89.80	91.60	6,134.80	-329.30	2,140.64	2,137.02	0.43	0.42	-0.10

Survey Report

Company:	HIGHPOINT RESOURCES	Local Co-ordinate Reference:	Well RSU Anschutz Fed 4-62-14-3225C
Project:	Weld County, CO (NAD83) CONZ US	TVD Reference:	4512+16.5 @ 4528.50usft (Planning)
Site:	RSU Anschutz Fed 4-62-14_13	MD Reference:	4512+16.5 @ 4528.50usft (Planning)
Well:	RSU Anschutz Fed 4-62-14-3225C	North Reference:	True
Wellbore:	4-62-14-3225C	Survey Calculation Method:	Minimum Curvature
Design:	4-62-14-3225C (AsDrilled)	Database:	PANTHER_EDM

Survey										
Measured Depth (usft)	Inclination (°)	Azimuth (°)	Vertical Depth (usft)	+N/-S (usft)	+E/-W (usft)	Vertical Section (usft)	Dogleg Rate (°/100ft)	Build Rate (°/100ft)	Turn Rate (°/100ft)	
8,202.00	90.50	90.50	6,134.55	-331.04	2,235.63	2,231.98	1.37	0.74	-1.16	
8,298.00	92.00	89.80	6,132.46	-331.29	2,331.60	2,327.94	1.72	1.56	-0.73	
8,393.00	91.50	89.80	6,129.56	-330.96	2,426.55	2,422.89	0.53	-0.53	0.00	
8,489.00	90.80	89.60	6,127.63	-330.46	2,522.53	2,518.87	0.76	-0.73	-0.21	
8,585.00	89.80	90.00	6,127.13	-330.12	2,618.53	2,614.87	1.12	-1.04	0.42	
8,681.00	90.90	90.40	6,126.54	-330.46	2,714.53	2,710.85	1.22	1.15	0.42	
8,776.00	91.90	90.30	6,124.22	-331.04	2,809.49	2,805.81	1.06	1.05	-0.11	
8,872.00	91.30	90.60	6,121.54	-331.79	2,905.45	2,901.76	0.70	-0.62	0.31	
8,967.00	91.80	90.80	6,118.97	-332.95	3,000.41	2,996.70	0.57	0.53	0.21	
9,063.00	91.80	90.20	6,115.96	-333.79	3,096.36	3,092.63	0.62	0.00	-0.62	
9,159.00	91.80	89.90	6,112.94	-333.87	3,192.31	3,188.58	0.31	0.00	-0.31	
9,254.00	91.50	87.80	6,110.21	-331.97	3,287.25	3,283.53	2.23	-0.32	-2.21	
9,350.00	88.90	87.30	6,109.87	-327.86	3,383.15	3,379.47	2.76	-2.71	-0.52	
9,445.00	88.20	88.00	6,112.27	-323.97	3,478.04	3,474.39	1.04	-0.74	0.74	
9,541.00	87.60	87.90	6,115.79	-320.54	3,573.91	3,570.30	0.63	-0.62	-0.10	
9,637.00	88.70	88.20	6,118.89	-317.27	3,669.81	3,666.22	1.19	1.15	0.31	
9,732.00	89.70	87.30	6,120.22	-313.54	3,764.72	3,761.17	1.42	1.05	-0.95	
9,827.00	92.50	86.90	6,118.39	-308.74	3,859.57	3,856.07	2.98	2.95	-0.42	
9,923.00	89.90	88.00	6,116.38	-304.47	3,955.45	3,951.98	2.94	-2.71	1.15	
10,018.00	89.80	89.40	6,116.63	-302.32	4,050.42	4,046.97	1.48	-0.11	1.47	
10,114.00	91.20	90.80	6,115.79	-302.48	4,146.41	4,142.96	2.06	1.46	1.46	
10,209.00	89.30	90.50	6,115.38	-303.56	4,241.40	4,237.93	2.02	-2.00	-0.32	
10,304.00	90.20	90.90	6,115.79	-304.72	4,336.39	4,332.90	1.04	0.95	0.42	
10,400.00	91.00	91.40	6,114.79	-306.65	4,432.37	4,428.85	0.98	0.83	0.52	
10,496.00	92.10	91.10	6,112.19	-308.74	4,528.31	4,524.76	1.19	1.15	-0.31	
10,591.00	91.30	91.50	6,109.37	-310.90	4,623.24	4,619.67	0.94	-0.84	0.42	
10,687.00	92.20	90.40	6,106.44	-312.49	4,719.18	4,715.58	1.48	0.94	-1.15	
10,783.00	91.20	88.70	6,103.59	-311.73	4,815.13	4,811.54	2.05	-1.04	-1.77	
10,879.00	90.90	87.50	6,101.84	-308.55	4,911.06	4,907.49	1.29	-0.31	-1.25	
10,974.00	90.90	88.10	6,100.34	-304.90	5,005.98	5,002.45	0.63	0.00	0.63	
11,069.00	92.00	88.40	6,097.94	-302.00	5,100.90	5,097.39	1.20	1.16	0.32	
11,164.00	91.50	87.30	6,095.04	-298.44	5,195.79	5,192.31	1.27	-0.53	-1.16	
11,256.00	90.50	87.20	6,093.43	-294.03	5,287.67	5,284.24	1.09	-1.09	-0.11	
11,348.00	90.20	88.10	6,092.87	-290.26	5,379.59	5,376.19	1.03	-0.33	0.98	
11,441.00	91.80	90.60	6,091.25	-289.20	5,472.55	5,469.17	3.19	1.72	2.69	
11,533.00	91.70	89.90	6,088.44	-289.60	5,564.51	5,561.11	0.77	-0.11	-0.76	
11,625.00	91.30	89.40	6,086.03	-289.04	5,656.48	5,653.08	0.70	-0.43	-0.54	
11,717.00	88.20	85.80	6,086.43	-285.19	5,748.37	5,745.01	5.16	-3.37	-3.91	
11,809.00	88.90	86.70	6,088.76	-279.17	5,840.14	5,836.84	1.24	0.76	0.98	
11,901.00	88.50	87.40	6,090.85	-274.44	5,931.99	5,928.74	0.88	-0.43	0.76	
11,993.00	87.30	87.20	6,094.22	-270.11	6,023.83	6,020.61	1.32	-1.30	-0.22	
12,085.00	87.40	88.70	6,098.47	-266.82	6,115.67	6,112.48	1.63	0.11	1.63	
12,176.00	91.10	90.20	6,099.66	-265.95	6,206.64	6,203.46	4.39	4.07	1.65	
12,268.00	92.00	89.10	6,097.17	-265.39	6,298.60	6,295.42	1.54	0.98	-1.20	

Survey Report

Company:	HIGHPOINT RESOURCES	Local Co-ordinate Reference:	Well RSU Anschutz Fed 4-62-14-3225C
Project:	Weld County, CO (NAD83) CONZ US	TVD Reference:	4512+16.5 @ 4528.50usft (Planning)
Site:	RSU Anschutz Fed 4-62-14_13	MD Reference:	4512+16.5 @ 4528.50usft (Planning)
Well:	RSU Anschutz Fed 4-62-14-3225C	North Reference:	True
Wellbore:	4-62-14-3225C	Survey Calculation Method:	Minimum Curvature
Design:	4-62-14-3225C (AsDrilled)	Database:	PANTHER_EDM

Survey									
Measured Depth (usft)	Inclination (°)	Azimuth (°)	Vertical Depth (usft)	+N/-S (usft)	+E/-W (usft)	Vertical Section (usft)	Dogleg Rate (°/100ft)	Build Rate (°/100ft)	Turn Rate (°/100ft)
12,360.00	91.00	90.20	6,094.77	-264.83	6,390.57	6,387.38	1.62	-1.09	1.20
12,453.00	92.40	91.10	6,092.01	-265.88	6,483.51	6,480.32	1.79	1.51	0.97
12,545.00	92.80	90.30	6,087.83	-267.00	6,575.41	6,572.20	0.97	0.43	-0.87
12,641.00	92.40	91.40	6,083.48	-268.43	6,671.30	6,668.07	1.22	-0.42	1.15
12,736.00	91.70	91.80	6,080.08	-271.08	6,766.20	6,762.93	0.85	-0.74	0.42
12,831.00	91.70	91.40	6,077.26	-273.73	6,861.12	6,857.82	0.42	0.00	-0.42
12,927.00	90.10	90.50	6,075.75	-275.32	6,957.09	6,953.77	1.91	-1.67	-0.94
13,022.00	90.80	90.90	6,075.01	-276.48	7,052.08	7,048.74	0.85	0.74	0.42
13,118.00	92.10	90.90	6,072.58	-277.99	7,148.04	7,144.67	1.35	1.35	0.00
13,214.00	90.90	89.70	6,070.06	-278.49	7,244.00	7,240.63	1.77	-1.25	-1.25
13,309.00	91.10	87.80	6,068.41	-276.42	7,338.96	7,335.60	2.01	0.21	-2.00
13,404.00	90.00	87.70	6,067.49	-272.69	7,433.88	7,430.56	1.16	-1.16	-0.11
13,500.00	89.50	88.10	6,067.91	-269.17	7,529.81	7,526.52	0.67	-0.52	0.42
13,595.00	90.30	88.10	6,068.08	-266.02	7,624.76	7,621.50	0.84	0.84	0.00
13,691.00	89.70	88.00	6,068.08	-262.75	7,720.71	7,717.47	0.63	-0.62	-0.10
13,787.00	90.00	87.70	6,068.33	-259.15	7,816.64	7,813.44	0.44	0.31	-0.31
13,882.00	89.70	88.70	6,068.58	-256.17	7,911.59	7,908.41	1.10	-0.32	1.05
13,977.00	89.90	88.40	6,068.91	-253.76	8,006.56	8,003.40	0.38	0.21	-0.32
14,073.00	90.60	92.80	6,068.49	-254.77	8,102.53	8,099.36	4.64	0.73	4.58
14,168.00	91.00	93.20	6,067.17	-259.74	8,197.39	8,194.16	0.60	0.42	0.42
14,264.00	90.70	90.90	6,065.74	-263.17	8,293.31	8,290.04	2.42	-0.31	-2.40
14,359.00	90.70	89.80	6,064.58	-263.75	8,388.30	8,385.02	1.16	0.00	-1.16
14,455.00	91.50	89.10	6,062.74	-262.83	8,484.28	8,481.00	1.11	0.83	-0.73
14,550.00	92.30	88.20	6,059.59	-260.60	8,579.20	8,575.93	1.27	0.84	-0.95
14,646.00	91.50	88.50	6,056.41	-257.83	8,675.10	8,671.87	0.89	-0.83	0.31
14,741.00	92.00	87.20	6,053.50	-254.27	8,769.99	8,766.78	1.47	0.53	-1.37
14,836.00	90.20	86.70	6,051.68	-249.22	8,864.83	8,861.68	1.97	-1.89	-0.53
14,932.00	89.90	89.10	6,051.60	-245.70	8,960.76	8,957.64	2.52	-0.31	2.50
15,027.00	90.50	88.90	6,051.26	-244.04	9,055.74	9,052.63	0.67	0.63	-0.21
15,123.00	89.20	89.30	6,051.52	-242.53	9,151.73	9,148.63	1.42	-1.35	0.42
15,218.00	89.80	91.70	6,052.35	-243.36	9,246.72	9,243.60	2.60	0.63	2.53
15,314.00	91.10	92.50	6,051.59	-246.88	9,342.65	9,339.49	1.59	1.35	0.83
15,409.00	89.80	89.90	6,050.85	-248.87	9,437.61	9,434.43	3.06	-1.37	-2.74
15,505.00	90.20	89.40	6,050.85	-248.28	9,533.61	9,530.43	0.67	0.42	-0.52
15,601.00	91.10	89.30	6,049.76	-247.20	9,629.60	9,626.42	0.94	0.94	-0.10
15,696.00	92.10	90.40	6,047.10	-246.95	9,724.56	9,721.38	1.56	1.05	1.16
15,792.00	91.00	90.50	6,044.51	-247.70	9,820.52	9,817.32	1.15	-1.15	0.10
15,887.00	89.80	89.10	6,043.84	-247.37	9,915.51	9,912.31	1.94	-1.26	-1.47
15,982.00	90.90	89.40	6,043.26	-246.12	10,010.50	10,007.31	1.20	1.16	0.32
16,077.00	88.60	87.70	6,043.68	-243.72	10,105.46	10,102.29	3.01	-2.42	-1.79
16,173.00	90.50	89.00	6,044.43	-240.96	10,201.41	10,198.26	2.40	1.98	1.35
16,269.00	90.40	87.30	6,043.68	-237.86	10,297.35	10,294.23	1.77	-0.10	-1.77
16,364.00	90.90	86.90	6,042.60	-233.05	10,392.22	10,389.15	0.67	0.53	-0.42

Survey Report

Company:	HIGHPOINT RESOURCES	Local Co-ordinate Reference:	Well RSU Anschutz Fed 4-62-14-3225C
Project:	Weld County, CO (NAD83) CONZ US	TVD Reference:	4512+16.5 @ 4528.50usft (Planning)
Site:	RSU Anschutz Fed 4-62-14_13	MD Reference:	4512+16.5 @ 4528.50usft (Planning)
Well:	RSU Anschutz Fed 4-62-14-3225C	North Reference:	True
Wellbore:	4-62-14-3225C	Survey Calculation Method:	Minimum Curvature
Design:	4-62-14-3225C (AsDrilled)	Database:	PANTHER_EDM

Survey										
Measured Depth (usft)	Inclination (°)	Azimuth (°)	Vertical Depth (usft)	+N/-S (usft)	+E/-W (usft)	Vertical Section (usft)	Dogleg Rate (°/100ft)	Build Rate (°/100ft)	Turn Rate (°/100ft)	
16,460.00	90.40	86.00	6,041.51	-227.11	10,488.03	10,485.02	1.07	-0.52	-0.94	
16,555.00	91.30	85.10	6,040.10	-219.74	10,582.73	10,579.79	1.34	0.95	-0.95	
16,636.50	91.80	83.90	6,037.90	-211.93	10,663.83	10,660.96	1.59	0.61	-1.47	
16,701.38	91.80	83.90	6,035.86	-205.04	10,728.31	10,725.52	0.00	0.00	0.00	
RSU 4-62-14-3225C PBHL p3										
16,701.76	91.80	83.90	6,035.85	-205.00	10,728.68	10,725.89	0.00	0.00	0.00	
RSU 4-62-14-3225C PBHL p2										
16,702.89	91.80	83.90	6,035.81	-204.88	10,729.81	10,727.02	0.00	0.00	0.00	
RSU 4-62-14-3225C PBHL										
16,703.50	91.80	83.90	6,035.79	-204.81	10,730.41	10,727.62	0.00	0.00	0.00	

Checked By: _____	Approved By: _____	Date: _____
-------------------	--------------------	-------------