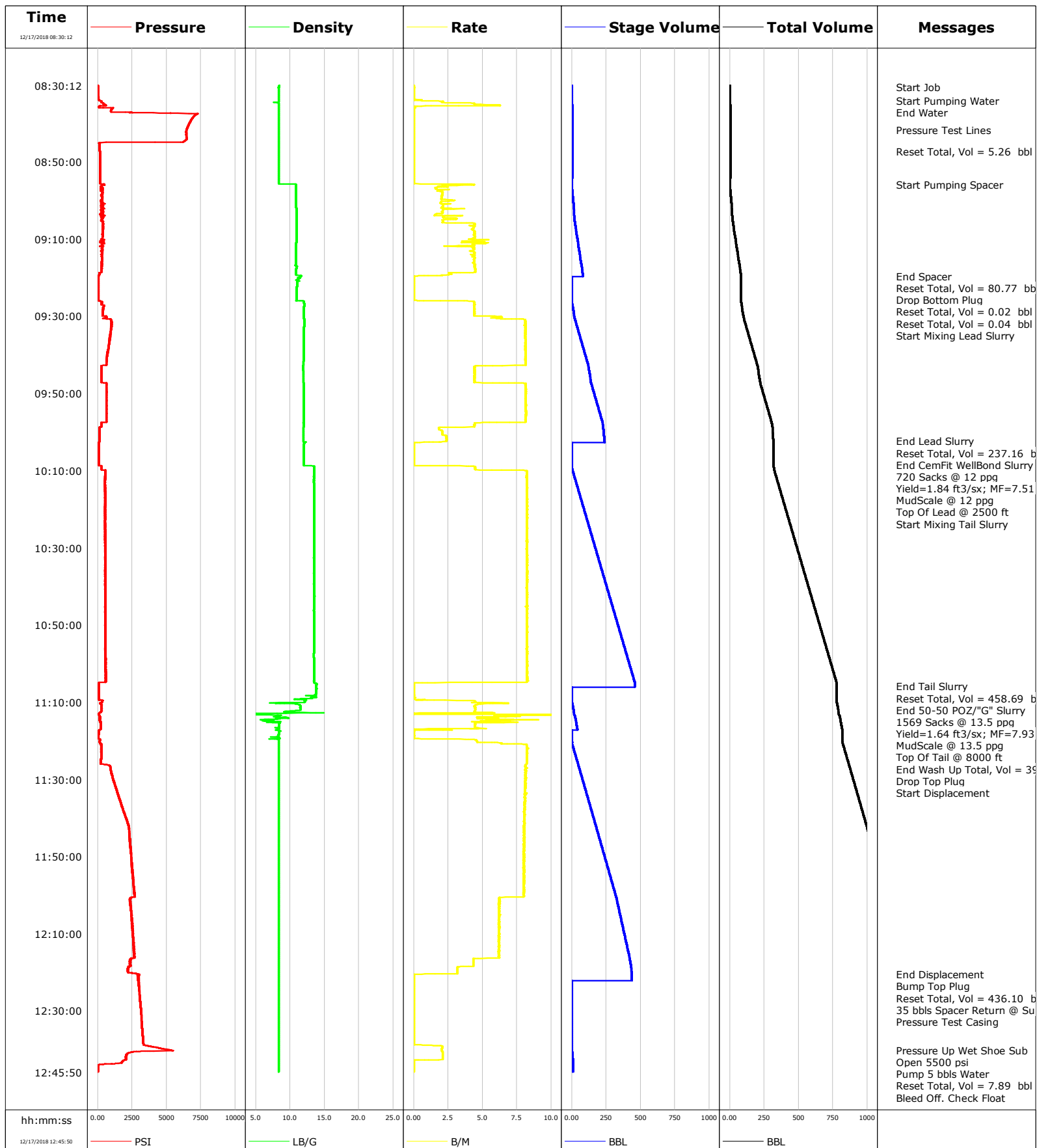


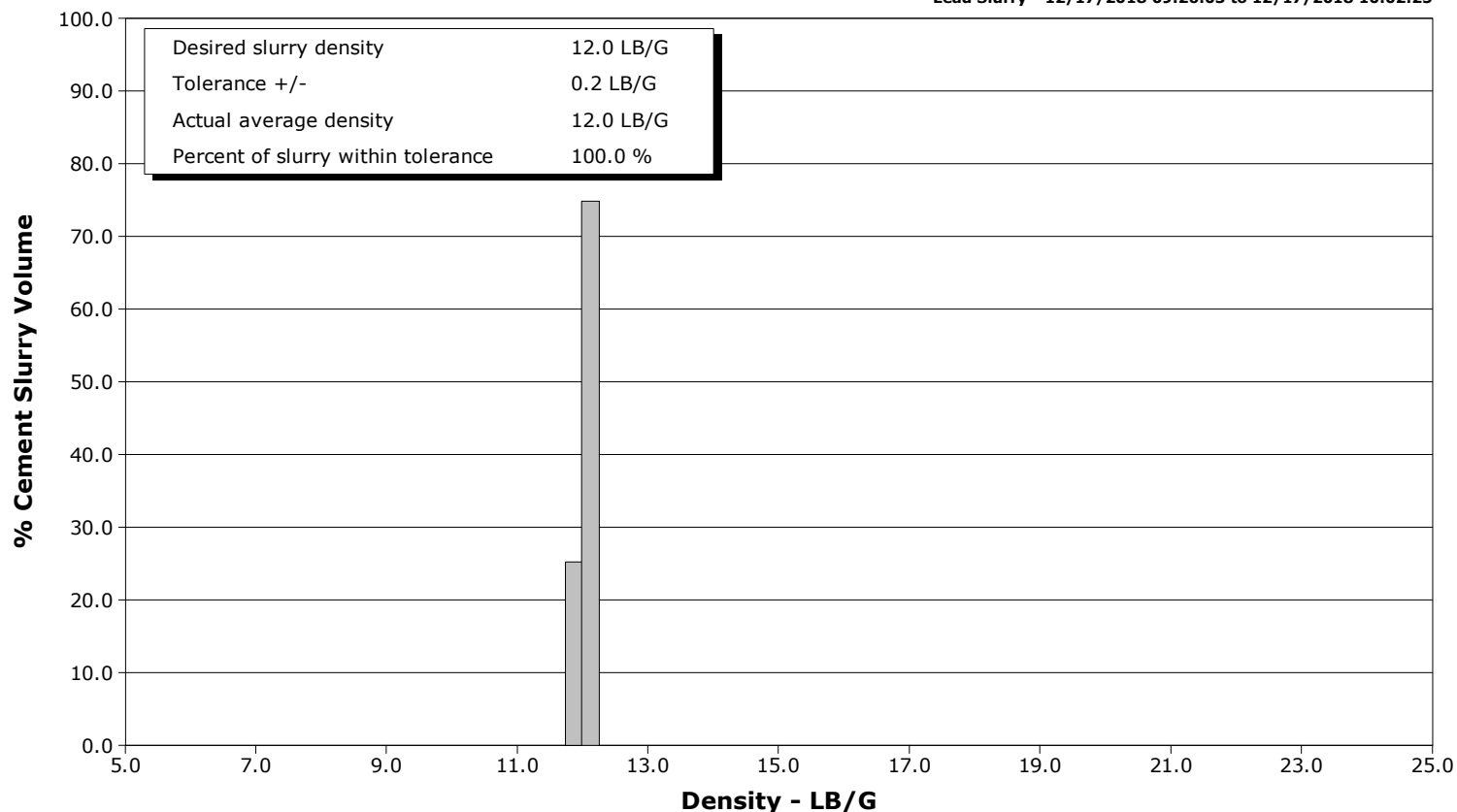
Well	Castle Pines 19-10HZ	Client	ANADARKO PETROLEUM COMPANY
Field	Wattenberg	SIR No.	E5N2-00254
Engineer	Wence Luste	Job Type	5 1/2" Production
Country	United States	Job Date	12-17-2018



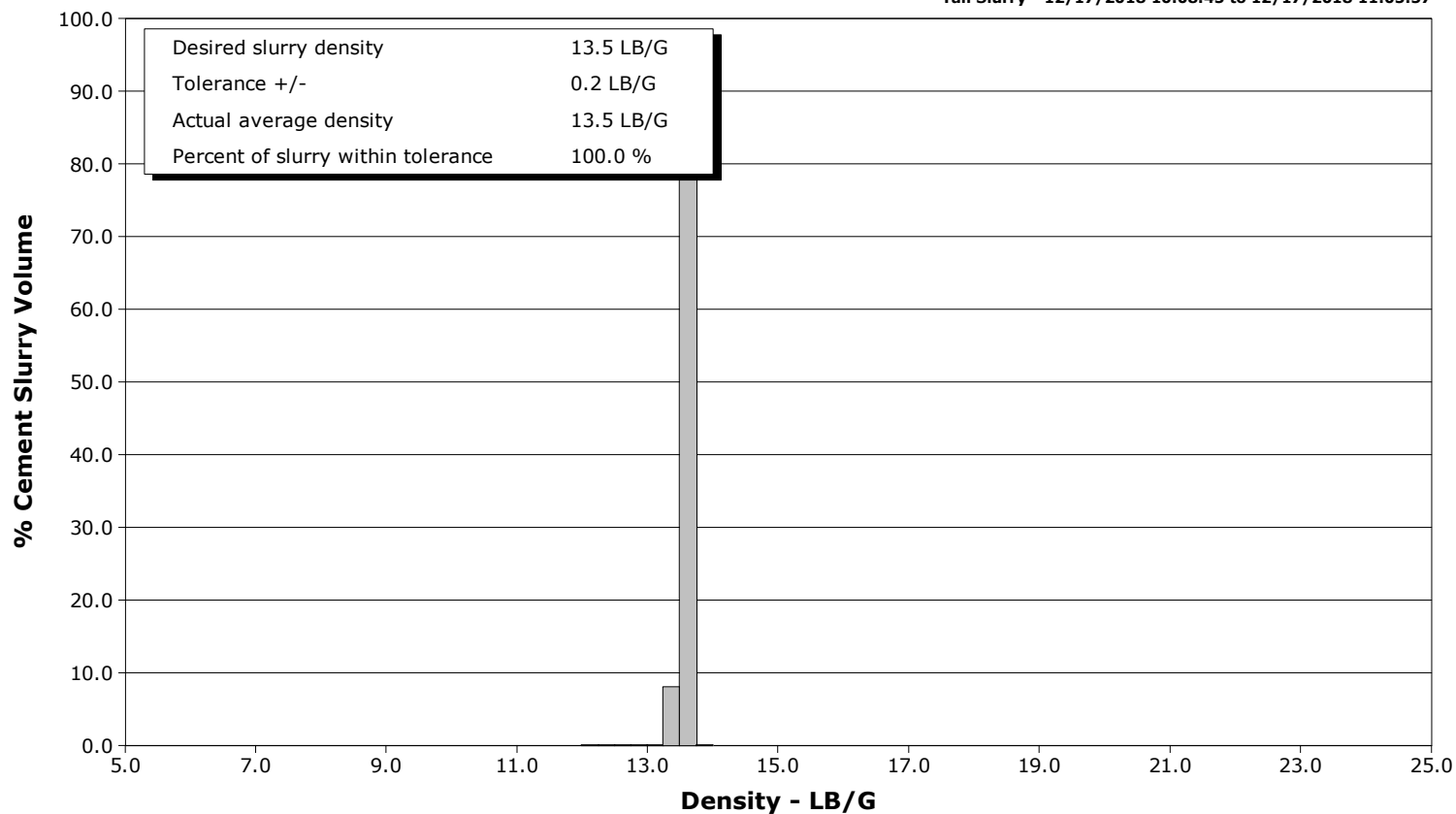
Well Castle Pines 19-10HZ
Field Wattenberg
Engineer Wence Luste
Country United States

Client ANADARKO PETROLEUM COMPANY
SIR No. E5N2-00254
Job Type 5 1/2" Production
Job Date 12-17-2018

Lead Slurry - 12/17/2018 09:26:03 to 12/17/2018 10:02:25



Tail Slurry - 12/17/2018 10:08:45 to 12/17/2018 11:05:57



Page 1 of 9

Well			Field		Job Start		Customer	Job Number
Castle Pines 19-10HZ 0631787904			Wattenberg		Dec/17/2018		ANADARKO PETROLEUM COMPANY	E5N2-00254
Date	Time 24-hr clock	Treating Pressure PSI	Flow Rate B/M	Density LB/G	Volume BBL	Message		
12/17/2018	08:43:32	6460	0.0	8.35	5.3			
12/17/2018	08:44:12	6471	0.0	8.35	5.3			
12/17/2018	08:44:52	6236	0.0	8.35	5.3			
12/17/2018	08:45:32	130	0.0	8.35	5.3			
12/17/2018	08:46:12	136	0.0	8.35	5.3			
12/17/2018	08:46:52	141	0.0	8.35	5.3			
12/17/2018	08:47:10	144	0.0	8.35	5.3	Reset Total, Vol = 5.26 bbl		
12/17/2018	08:47:32	146	0.0	8.35	5.3			
12/17/2018	08:48:12	148	0.0	8.35	5.3			
12/17/2018	08:48:52	152	0.0	8.35	5.3			
12/17/2018	08:49:32	154	0.0	8.35	5.3			
12/17/2018	08:50:12	155	0.0	8.35	5.3			
12/17/2018	08:50:52	157	0.0	8.35	5.3			
12/17/2018	08:52:12	157	0.0	8.35	5.3			
12/17/2018	08:52:52	157	0.0	8.35	5.3			
12/17/2018	08:53:32	157	0.0	8.35	5.3			
12/17/2018	08:54:12	157	0.0	8.35	5.3			
12/17/2018	08:54:52	157	0.0	8.35	0.0			
12/17/2018	08:55:32	157	0.0	8.35	0.0			
12/17/2018	08:55:49	434	4.1	10.82	0.2	Start Pumping Spacer		
12/17/2018	08:56:12	306	2.1	10.88	1.7			
12/17/2018	08:56:52	246	1.6	10.88	3.0			
12/17/2018	08:57:32	307	1.7	10.87	4.2			
12/17/2018	08:58:12	352	2.1	10.87	5.6			
12/17/2018	08:58:52	254	2.1	10.87	6.9			
12/17/2018	08:59:32	338	2.0	10.87	8.3			
12/17/2018	09:00:12	183	2.6	10.88	10.0			
12/17/2018	09:00:52	436	2.0	10.89	11.3			
12/17/2018	09:01:32	295	2.1	10.89	12.8			
12/17/2018	09:02:12	433	3.7	10.91	14.3			
12/17/2018	09:02:52	287	2.1	10.92	15.8			
12/17/2018	09:03:32	189	1.6	10.92	17.1			
12/17/2018	09:04:12	242	2.1	10.93	18.5			
12/17/2018	09:04:52	319	3.1	10.93	20.2			
12/17/2018	09:05:32	399	2.1	10.94	21.7			
12/17/2018	09:06:12	406	4.4	10.94	23.9			
12/17/2018	09:06:52	382	4.4	10.94	26.8			
12/17/2018	09:07:32	394	4.2	10.93	29.7			
12/17/2018	09:08:12	377	4.4	10.95	32.7			
12/17/2018	09:08:52	375	4.4	10.96	35.6			
12/17/2018	09:09:32	362	4.4	10.95	38.6			
12/17/2018	09:10:12	484	5.5	10.95	41.5			
12/17/2018	09:10:52	201	3.8	10.91	44.4			
12/17/2018	09:11:32	326	4.4	10.88	47.4			
12/17/2018	09:12:12	331	4.4	10.88	50.0			
12/17/2018	09:12:52	397	4.3	10.88	52.9			
12/17/2018	09:13:32	344	4.4	10.87	55.8			
12/17/2018	09:14:12	309	4.4	10.86	58.7			
12/17/2018	09:14:52	303	4.4	10.86	61.6			
12/17/2018	09:15:32	299	4.4	10.85	64.5			
12/17/2018	09:16:12	298	4.4	10.86	67.5			
12/17/2018	09:16:52	295	4.4	10.73	70.4			
12/17/2018	09:17:32	287	4.5	10.90	73.4			
12/17/2018	09:18:12	286	4.5	10.89	76.4			

Well			Field	Job Start		Customer	Job Number
Castle Pines 19-10HZ 0631787904			Wattenberg	Dec/17/2018		ANADARKO PETROLEUM COMPANY	E5N2-00254
Date	Time 24-hr clock	Treating Pressure PSI	Flow Rate B/M	Density LB/G	Volume BBL	Message	
12/17/2018	09:19:32	64	0.8	11.57	80.7		
12/17/2018	09:19:38	61	0.0	11.61	80.8	End Spacer	
12/17/2018	09:19:42	60	0.0	11.61	80.8	Reset Total, Vol = 80.77 bbl	
12/17/2018	09:19:50	58	0.0	11.49	80.8	Drop Bottom Plug	
12/17/2018	09:20:12	57	0.0	11.25	80.8		
12/17/2018	09:20:52	54	0.0	11.42	80.8		
12/17/2018	09:21:32	55	0.0	11.10	80.8		
12/17/2018	09:22:12	54	0.0	11.04	80.8		
12/17/2018	09:22:52	55	0.0	10.94	80.8		
12/17/2018	09:23:32	55	0.0	10.92	80.8		
12/17/2018	09:24:11	55	0.0	10.93	80.8	Reset Total, Vol = 0.02 bbl	
12/17/2018	09:24:52	56	0.0	10.93	80.8		
12/17/2018	09:25:32	55	0.0	10.93	80.8		
12/17/2018	09:25:56	56	0.2	10.98	80.8	Reset Total, Vol = 0.04 bbl	
12/17/2018	09:26:03	149	3.7	11.87	81.0	Start Mixing Lead Slurry	
12/17/2018	09:26:12	275	4.4	12.04	81.6		
12/17/2018	09:26:52	289	4.4	12.06	84.5		
12/17/2018	09:27:32	419	4.4	12.05	87.5		
12/17/2018	09:28:12	406	4.4	12.02	90.4		
12/17/2018	09:28:52	359	4.4	12.00	93.3		
12/17/2018	09:29:32	365	4.4	12.00	96.3		
12/17/2018	09:30:12	670	6.4	12.02	99.6		
12/17/2018	09:30:52	973	8.1	12.06	104.0		
12/17/2018	09:31:32	1020	8.1	12.06	109.4		
12/17/2018	09:32:12	998	8.1	12.06	114.8		
12/17/2018	09:32:52	997	8.1	12.05	120.2		
12/17/2018	09:33:32	973	8.1	12.04	125.6		
12/17/2018	09:34:12	946	8.1	12.02	131.1		
12/17/2018	09:34:52	922	8.1	12.01	136.5		
12/17/2018	09:35:32	908	8.1	12.01	141.9		
12/17/2018	09:36:12	869	8.1	11.99	147.3		
12/17/2018	09:36:52	849	8.1	12.01	152.8		
12/17/2018	09:37:32	804	8.1	12.01	158.2		
12/17/2018	09:38:12	792	8.1	12.00	163.6		
12/17/2018	09:38:52	760	8.1	12.01	169.0		
12/17/2018	09:39:32	713	8.1	12.02	174.5		
12/17/2018	09:40:12	674	8.2	12.02	179.9		
12/17/2018	09:40:52	676	8.1	12.01	185.3		
12/17/2018	09:41:32	653	8.1	11.98	190.7		
12/17/2018	09:42:12	635	8.2	11.97	196.2		
12/17/2018	09:42:52	269	4.6	11.89	201.4		
12/17/2018	09:43:32	272	4.4	11.89	204.3		
12/17/2018	09:44:12	256	4.4	11.93	207.3		
12/17/2018	09:44:52	270	4.4	11.93	210.3		
12/17/2018	09:45:32	269	4.4	11.95	213.2		
12/17/2018	09:46:12	275	4.4	11.95	216.2		
12/17/2018	09:46:52	269	4.4	11.96	219.1		
12/17/2018	09:47:32	644	8.1	12.03	222.9		
12/17/2018	09:48:12	623	8.1	12.04	228.3		
12/17/2018	09:48:52	619	8.2	12.03	233.8		
12/17/2018	09:49:32	646	8.2	12.02	239.2		
12/17/2018	09:50:12	649	8.2	12.02	244.7		
12/17/2018	09:50:52	636	8.2	12.02	250.1		
12/17/2018	09:51:32	627	8.2	12.02	255.5		

Well Castle Pines 19-10HZ 0631787904			Field Wattenberg	Job Start Dec/17/2018	Customer ANADARKO PETROLEUM COMPANY	Job Number E5N2-00254
Date	Time 24-hr clock	Treating Pressure PSI	Flow Rate B/M	Density LB/G	Volume BBL	Message
12/17/2018	09:52:52	634	8.2	12.01	266.4	
12/17/2018	09:53:32	635	8.2	12.00	271.8	
12/17/2018	09:54:12	640	8.2	12.01	277.3	
12/17/2018	09:54:52	649	8.2	12.01	282.7	
12/17/2018	09:55:32	641	8.2	12.00	288.2	
12/17/2018	09:56:12	633	8.1	12.01	293.6	
12/17/2018	09:56:52	638	8.1	12.03	299.0	
12/17/2018	09:57:32	282	6.1	11.98	304.4	
12/17/2018	09:58:12	289	4.4	11.98	307.5	
12/17/2018	09:58:52	124	1.9	11.97	310.2	
12/17/2018	09:59:32	128	2.0	11.95	311.4	
12/17/2018	10:00:12	127	2.1	11.95	312.8	
12/17/2018	10:00:52	138	2.3	11.93	314.2	
12/17/2018	10:01:32	138	2.4	11.94	315.8	
12/17/2018	10:02:12	137	2.4	11.94	317.4	
12/17/2018	10:02:25	136	2.4	11.95	317.9	End Lead Slurry
12/17/2018	10:02:27	135	2.3	11.95	318.0	Reset Total, Vol = 237.16 bbl
12/17/2018	10:02:28	136	2.3	11.95	318.0	End CemFit WellBond Slurry
12/17/2018	10:02:29	134	2.3	11.95	318.0	720 Sacks @ 12 ppg
12/17/2018	10:02:32	124	2.2	11.95	318.1	Yield=1.84 ft3/sx; MF=7.51 gps
12/17/2018	10:02:52	92	0.0	12.08	318.4	
12/17/2018	10:03:32	92	0.0	12.02	318.4	
12/17/2018	10:04:12	92	0.0	12.01	318.4	
12/17/2018	10:04:52	93	0.0	12.02	318.4	
12/17/2018	10:05:32	92	0.0	12.02	318.4	
12/17/2018	10:06:12	92	0.0	12.02	318.4	
12/17/2018	10:06:52	92	0.0	12.02	318.4	
12/17/2018	10:07:32	93	0.0	12.03	318.4	
12/17/2018	10:08:12	92	0.0	12.03	318.4	
12/17/2018	10:08:45	131	1.2	12.17	318.5	Start Mixing Tail Slurry
12/17/2018	10:09:32	263	4.5	13.53	321.7	
12/17/2018	10:10:12	572	8.2	13.52	325.9	
12/17/2018	10:10:52	563	8.2	13.50	331.4	
12/17/2018	10:11:32	541	8.2	13.49	336.9	
12/17/2018	10:12:12	544	8.2	13.49	342.3	
12/17/2018	10:12:52	529	8.3	13.48	347.8	
12/17/2018	10:13:32	527	8.3	13.51	353.3	
12/17/2018	10:14:12	544	8.2	13.52	358.8	
12/17/2018	10:14:52	556	8.2	13.51	364.3	
12/17/2018	10:15:32	563	8.3	13.52	369.8	
12/17/2018	10:16:12	541	8.2	13.54	375.3	
12/17/2018	10:16:52	546	8.2	13.54	380.8	
12/17/2018	10:17:32	546	8.3	13.54	386.3	
12/17/2018	10:18:12	546	8.3	13.54	391.8	
12/17/2018	10:18:52	546	8.3	13.53	397.3	
12/17/2018	10:19:32	538	8.2	13.53	402.8	
12/17/2018	10:20:12	548	8.2	13.52	408.3	
12/17/2018	10:21:32	537	8.3	13.53	419.3	
12/17/2018	10:22:12	542	8.2	13.54	424.8	
12/17/2018	10:22:52	547	8.2	13.53	430.3	
12/17/2018	10:23:32	541	8.2	13.51	435.8	
12/17/2018	10:24:12	534	8.2	13.52	441.3	
12/17/2018	10:24:52	545	8.3	13.52	446.8	
12/17/2018	10:25:32	548	8.2	13.52	452.3	

Well			Field		Job Start	Customer	Job Number
Castle Pines 19-10HZ 0631787904			Wattenberg		Dec/17/2018	ANADARKO PETROLEUM COMPANY	ESN2-00254
Date	Time 24-hr clock	Treating Pressure PSI	Flow Rate B/M	Density LB/G	Volume BBL	Message	
12/17/2018	10:26:52	540	8.2	13.52	463.3		
12/17/2018	10:27:32	532	8.2	13.51	468.8		
12/17/2018	10:28:12	552	8.2	13.52	474.3		
12/17/2018	10:28:52	541	8.2	13.53	479.8		
12/17/2018	10:29:32	547	8.2	13.53	485.3		
12/17/2018	10:30:12	552	8.2	13.54	490.8		
12/17/2018	10:30:52	543	8.2	13.53	496.3		
12/17/2018	10:31:32	551	8.2	13.54	501.8		
12/17/2018	10:32:12	554	8.2	13.52	507.3		
12/17/2018	10:32:52	567	8.2	13.55	512.8		
12/17/2018	10:33:32	549	8.2	13.51	518.3		
12/17/2018	10:34:12	549	8.2	13.54	523.7		
12/17/2018	10:34:52	560	8.3	13.54	529.2		
12/17/2018	10:35:32	552	8.3	13.51	534.8		
12/17/2018	10:36:12	542	8.2	13.50	540.3		
12/17/2018	10:36:52	541	8.3	13.51	545.8		
12/17/2018	10:37:32	572	8.3	13.52	551.3		
12/17/2018	10:38:12	549	8.3	13.51	556.8		
12/17/2018	10:38:52	537	8.2	13.50	562.3		
12/17/2018	10:39:32	542	8.2	13.50	567.8		
12/17/2018	10:40:12	558	8.3	13.53	573.1		
12/17/2018	10:40:52	542	8.2	13.52	578.8		
12/17/2018	10:41:32	550	8.2	13.53	584.2		
12/17/2018	10:42:12	561	8.3	13.55	589.7		
12/17/2018	10:42:52	557	8.3	13.53	595.2		
12/17/2018	10:43:32	552	8.2	13.54	600.7		
12/17/2018	10:44:12	552	8.2	13.52	606.2		
12/17/2018	10:44:52	559	8.3	13.51	611.7		
12/17/2018	10:45:32	548	8.2	13.49	617.2		
12/17/2018	10:46:12	543	8.2	13.48	622.7		
12/17/2018	10:46:52	555	8.3	13.50	628.2		
12/17/2018	10:47:32	555	8.2	13.51	633.7		
12/17/2018	10:48:12	554	8.3	13.51	639.2		
12/17/2018	10:48:52	552	8.2	13.51	644.7		
12/17/2018	10:49:32	562	8.3	13.51	650.2		
12/17/2018	10:50:12	560	8.3	13.52	655.7		
12/17/2018	10:50:52	542	8.2	13.51	661.2		
12/17/2018	10:51:32	561	8.2	13.51	666.7		
12/17/2018	10:52:12	573	8.3	13.52	672.2		
12/17/2018	10:52:52	558	8.2	13.52	677.7		
12/17/2018	10:53:32	558	8.2	13.52	683.2		
12/17/2018	10:54:12	570	8.2	13.54	688.7		
12/17/2018	10:54:52	563	8.2	13.51	694.2		
12/17/2018	10:55:32	550	8.2	13.53	699.7		
12/17/2018	10:56:12	558	8.2	13.51	705.2		
12/17/2018	10:56:52	561	8.2	13.51	710.7		
12/17/2018	10:57:32	572	8.2	13.47	716.2		
12/17/2018	10:58:12	564	8.2	13.47	721.7		
12/17/2018	10:58:52	574	8.2	13.51	727.2		
12/17/2018	10:59:32	584	8.2	13.52	732.7		
12/17/2018	11:00:12	558	8.3	13.53	738.2		
12/17/2018	11:00:52	561	8.2	13.52	743.7		
12/17/2018	11:01:32	583	8.2	13.53	749.2		
12/17/2018	11:02:12	587	8.3	13.54	754.7		

Well			Field	Job Start		Customer	Job Number
Castle Pines 19-10HZ 0631787904			Wattenberg	Dec/17/2018		ANADARKO PETROLEUM COMPANY	E5N2-00254
Date	Time 24-hr clock	Treating Pressure PSI	Flow Rate B/M	Density LB/G	Volume BBL	Message	
12/17/2018	11:03:32	581	8.2	13.50	765.7		
12/17/2018	11:04:12	587	8.2	13.51	771.2		
12/17/2018	11:04:52	303	7.0	13.52	776.7		
12/17/2018	11:05:57	91	0.0	13.83	777.1	End Tail Slurry	
12/17/2018	11:05:59	91	0.0	13.83	777.1	Reset Total, Vol = 458.69 bbl	
12/17/2018	11:06:01	91	0.0	13.84	777.1	End 50-50 POZ/"G" Slurry	
12/17/2018	11:06:02	91	0.0	13.83	777.1	1569 Sacks @ 13.5 ppg	
12/17/2018	11:06:03	91	0.0	13.82	777.1	Yield=1.64 ft3/sx; MF=7.93 gps	
12/17/2018	11:06:04	91	0.0	13.82	777.1	MudScale @ 13.5 ppg	
12/17/2018	11:06:05	91	0.0	13.82	777.1	Top Of Tail @ 8000 ft	
12/17/2018	11:06:12	91	0.0	13.82	777.1		
12/17/2018	11:06:52	91	0.0	13.82	777.1		
12/17/2018	11:07:32	90	0.0	13.83	777.1		
12/17/2018	11:08:12	90	0.0	13.65	777.1		
12/17/2018	11:08:52	90	0.1	13.05	777.1		
12/17/2018	11:09:32	402	3.1	12.20	777.3		
12/17/2018	11:10:12	182	6.7	7.08	780.3		
12/17/2018	11:10:52	279	4.5	11.46	783.8		
12/17/2018	11:11:32	285	4.4	11.51	786.7		
12/17/2018	11:12:12	287	4.4	10.84	789.7		
12/17/2018	11:12:52	144	0.0	8.10	792.7		
12/17/2018	11:13:32	132	6.3	8.36	798.9		
12/17/2018	11:14:12	199	5.8	8.23	802.9		
12/17/2018	11:14:52	178	6.6	6.06	807.0		
12/17/2018	11:15:32	228	4.5	8.45	810.6		
12/17/2018	11:16:12	223	4.4	8.43	813.5		
12/17/2018	11:16:52	213	4.2	8.40	816.5		
12/17/2018	11:17:20	74	0.0	8.35	817.0	End Wash Up Total, Vol = 39.87 bbl	
12/17/2018	11:17:30	73	0.0	8.60	817.0	Drop Top Plug	
12/17/2018	11:17:32	73	0.1	8.44	817.0		
12/17/2018	11:18:12	72	0.0	8.42	817.0		
12/17/2018	11:18:52	70	0.0	8.32	817.0		
12/17/2018	11:19:27	70	0.3	8.49	817.0	Start Displacement	
12/17/2018	11:19:32	79	1.2	7.39	817.0		
12/17/2018	11:20:12	137	4.6	8.34	819.8		
12/17/2018	11:20:52	264	7.9	8.35	823.6		
12/17/2018	11:21:32	257	8.2	8.35	829.1		
12/17/2018	11:22:12	254	8.2	8.35	834.6		
12/17/2018	11:22:52	255	8.2	8.35	840.1		
12/17/2018	11:23:32	262	8.2	8.35	845.6		
12/17/2018	11:24:12	261	8.2	8.36	851.1		
12/17/2018	11:24:52	218	8.2	8.36	856.4		
12/17/2018	11:25:32	216	8.2	8.35	862.1		
12/17/2018	11:26:12	614	8.2	8.35	867.6		
12/17/2018	11:26:52	915	8.2	8.36	873.0		
12/17/2018	11:27:32	935	8.2	8.36	878.4		
12/17/2018	11:28:12	989	8.1	8.35	883.8		
12/17/2018	11:28:52	1047	8.1	8.35	889.3		
12/17/2018	11:29:32	1094	8.1	8.36	894.7		
12/17/2018	11:30:12	1132	8.1	8.36	900.1		
12/17/2018	11:30:52	1194	8.1	8.36	905.6		
12/17/2018	11:31:32	1283	8.1	8.35	911.0		
12/17/2018	11:32:12	1310	8.1	8.36	916.4		
12/17/2018	11:32:52	1371	8.1	8.35	921.8		

Well			Field		Job Start	Customer	Job Number
Castle Pines 19-10HZ 0631787904			Wattenberg		Dec/17/2018	ANADARKO PETROLEUM COMPANY	ESN2-00254
Date	Time 24-hr clock	Treating Pressure PSI	Flow Rate B/M	Density LB/G	Volume BBL	Message	
12/17/2018	11:34:12	1526	8.1	8.36	932.6		
12/17/2018	11:34:52	1577	8.1	8.35	938.0		
12/17/2018	11:35:32	1633	8.1	8.35	943.4		
12/17/2018	11:36:12	1685	8.1	8.35	948.8		
12/17/2018	11:36:52	1754	8.1	8.35	954.2		
12/17/2018	11:37:32	1825	8.1	8.35	959.6		
12/17/2018	11:38:12	1863	8.1	8.35	965.0		
12/17/2018	11:38:52	1925	8.0	8.35	970.3		
12/17/2018	11:39:32	2031	8.0	8.35	975.7		
12/17/2018	11:40:12	2097	8.1	8.35	981.1		
12/17/2018	11:40:52	2138	8.0	8.35	986.4		
12/17/2018	11:41:32	2200	8.0	8.35	991.8		
12/17/2018	11:42:12	2253	8.0	8.35	997.2		
12/17/2018	11:42:52	2296	8.0	8.35	1002.5		
12/17/2018	11:43:32	2289	8.0	8.35	1007.9		
12/17/2018	11:44:12	2309	8.1	8.35	1013.2		
12/17/2018	11:44:52	2331	8.1	8.35	1018.6		
12/17/2018	11:45:32	2345	8.0	8.35	1023.9		
12/17/2018	11:46:12	2348	8.0	8.35	1029.3		
12/17/2018	11:46:52	2358	8.0	8.35	1034.7		
12/17/2018	11:47:32	2375	8.1	8.35	1040.0		
12/17/2018	11:48:12	2417	8.0	8.35	1045.4		
12/17/2018	11:48:52	2433	8.0	8.35	1050.7		
12/17/2018	11:49:32	2411	8.0	8.35	1056.1		
12/17/2018	11:50:12	2454	8.0	8.35	1061.3		
12/17/2018	11:50:52	2479	8.0	8.35	1066.8		
12/17/2018	11:51:32	2468	8.0	8.35	1072.1		
12/17/2018	11:52:12	2474	8.0	8.35	1077.4		
12/17/2018	11:52:52	2503	8.0	8.35	1082.8		
12/17/2018	11:53:32	2522	8.0	8.35	1088.1		
12/17/2018	11:54:12	2539	8.0	8.35	1093.5		
12/17/2018	11:54:52	2558	8.0	8.35	1098.8		
12/17/2018	11:55:32	2572	8.0	8.35	1104.2		
12/17/2018	11:56:12	2589	8.0	8.35	1109.5		
12/17/2018	11:56:52	2610	8.0	8.35	1114.9		
12/17/2018	11:57:32	2638	8.0	8.35	1120.2		
12/17/2018	11:58:12	2654	8.0	8.35	1125.6		
12/17/2018	11:58:52	2646	8.0	8.35	1130.9		
12/17/2018	11:59:32	2665	8.0	8.35	1136.3		
12/17/2018	12:00:12	2693	8.0	8.35	1141.6		
12/17/2018	12:00:52	2364	6.2	8.35	1146.3		
12/17/2018	12:01:32	2387	6.2	8.35	1150.5		
12/17/2018	12:02:12	2400	6.3	8.35	1154.6		
12/17/2018	12:02:52	2388	6.2	8.35	1158.8		
12/17/2018	12:03:32	2447	6.2	8.35	1162.9		
12/17/2018	12:04:12	2428	6.2	8.35	1167.1		
12/17/2018	12:04:52	2445	6.2	8.35	1171.2		
12/17/2018	12:05:32	2491	6.2	8.35	1175.4		
12/17/2018	12:06:12	2520	6.2	8.35	1179.5		
12/17/2018	12:06:52	2537	6.2	8.35	1183.7		
12/17/2018	12:07:32	2488	6.2	8.35	1187.8		
12/17/2018	12:08:12	2513	6.2	8.35	1191.9		
12/17/2018	12:08:52	2533	6.2	8.35	1196.1		
12/17/2018	12:09:32	2553	6.2	8.35	1200.2		

Well Castle Pines 19-10HZ 0631787904			Field Wattenberg	Job Start Dec/17/2018	Customer ANADARKO PETROLEUM COMPANY	Job Number E5N2-00254
Date	Time 24-hr clock	Treating Pressure PSI	Flow Rate B/M	Density LB/G	Volume BBL	Message
12/17/2018	12:10:52	2558	6.2	8.35	1208.5	
12/17/2018	12:11:32	2565	6.2	8.35	1212.6	
12/17/2018	12:12:12	2586	6.2	8.35	1216.8	
12/17/2018	12:12:52	2613	6.2	8.35	1220.9	
12/17/2018	12:13:32	2646	6.2	8.35	1225.1	
12/17/2018	12:14:12	2628	6.2	8.35	1229.2	
12/17/2018	12:14:52	2657	6.2	8.35	1233.3	
12/17/2018	12:16:12	2659	6.2	8.35	1241.6	
12/17/2018	12:16:52	2390	4.3	8.35	1244.8	
12/17/2018	12:17:32	2399	4.3	8.35	1247.7	
12/17/2018	12:18:12	2389	4.3	8.35	1250.6	
12/17/2018	12:18:52	2261	3.2	8.35	1253.1	
12/17/2018	12:19:32	2193	3.2	8.35	1255.2	
12/17/2018	12:20:12	2509	3.2	8.35	1257.3	
12/17/2018	12:20:27	2909	0.6	8.35	1258.1	End Displacement
12/17/2018	12:20:28	2919	0.3	8.35	1258.1	Bump Top Plug
12/17/2018	12:20:29	2944	0.2	8.35	1258.1	Reset Total, Vol = 436.10 bbl
12/17/2018	12:20:30	3054	0.1	8.35	1258.1	35 bbls Spacer Return @ Surface
12/17/2018	12:20:52	2948	0.0	8.35	1258.1	
12/17/2018	12:21:17	3015	0.0	8.35	1258.1	Pressure Test Casing
12/17/2018	12:21:32	3013	0.0	8.35	1258.1	
12/17/2018	12:22:12	2993	0.0	8.35	1258.1	
12/17/2018	12:22:52	2987	0.0	8.35	1258.1	
12/17/2018	12:23:32	2991	0.0	8.35	1258.1	
12/17/2018	12:24:12	3007	0.0	8.35	1258.1	
12/17/2018	12:24:52	3022	0.0	8.35	1258.1	
12/17/2018	12:25:32	3040	0.0	8.35	1258.1	
12/17/2018	12:26:12	3064	0.0	8.35	1258.1	
12/17/2018	12:26:52	3079	0.0	8.35	1258.1	
12/17/2018	12:27:32	3095	0.0	8.35	1258.1	
12/17/2018	12:28:12	3109	0.0	8.35	1258.1	
12/17/2018	12:28:52	3123	0.0	8.35	1258.1	
12/17/2018	12:29:32	3137	0.0	8.35	1258.1	
12/17/2018	12:30:12	3150	0.0	8.35	1258.1	
12/17/2018	12:30:52	3164	0.0	8.35	1258.1	
12/17/2018	12:31:32	3178	0.0	8.35	1258.1	
12/17/2018	12:32:12	3191	0.0	8.35	1258.1	
12/17/2018	12:32:52	3205	0.0	8.35	1258.1	
12/17/2018	12:33:32	3218	0.0	8.35	1258.1	
12/17/2018	12:34:12	3231	0.0	8.35	1258.1	
12/17/2018	12:34:52	3244	0.0	8.35	1258.1	
12/17/2018	12:35:32	3256	0.0	8.36	1258.1	
12/17/2018	12:36:12	3269	0.0	8.35	1258.1	
12/17/2018	12:36:52	3281	0.0	8.35	1258.1	
12/17/2018	12:37:32	3294	0.0	8.35	1258.1	
12/17/2018	12:38:12	3307	0.0	8.35	1258.1	
12/17/2018	12:38:52	3386	0.9	8.35	1258.1	
12/17/2018	12:39:32	4364	2.1	8.35	1259.4	
12/17/2018	12:40:10	5339	2.0	8.35	1260.7	Pressure Up Wet Shoe Sub
12/17/2018	12:40:12	5383	2.0	8.35	1260.8	
12/17/2018	12:40:31	2982	2.1	8.35	1261.4	Open 5500 psi
12/17/2018	12:40:52	2227	2.1	8.35	1262.1	
12/17/2018	12:40:58	2191	2.1	8.35	1262.4	Pump 5 bbls Water
12/17/2018	12:41:32	2111	2.1	8.35	1263.6	

Well			Field		Job Start	Customer		Job Number
Castle Pines 19-10HZ 0631787904			Wattenberg		Dec/17/2018	ANADARKO PETROLEUM COMPANY		E5N2-00254
Date	Time 24-hr clock	Treating Pressure PSI	Flow Rate B/M	Density LB/G	Volume BBL	Message		
12/17/2018	12:42:44	1952	0.1	8.35	1266.0	Reset Total, Vol = 7.89 bbl		
12/17/2018	12:42:52	1870	0.0	8.35	1266.0			
12/17/2018	12:43:32	1690	0.0	8.35	1266.0			
12/17/2018	12:43:44	972	0.0	8.35	1266.0	Bleed Off. Check Float		
12/17/2018	12:43:45	625	0.0	8.35	1266.0	Float Held. 2.5 bbl Back		
12/17/2018	12:44:12	21	0.0	8.35	1266.0			
12/17/2018	12:44:52	23	0.0	8.35	1266.0			
12/17/2018	12:45:32	25	0.0	8.35	1266.0			

Post Job Summary

Average Pump Rates, bbl/min					Volume of Fluid Injected, bbl							
Slurry 6.5	N2	Mud	Maximum Rate 25.0	Total Slurry 695.9	Mud 0.0	Spacer 80.8	N2					
Treating Pressure Summary, psi					Breakdown Fluid							
Maximum 7305	Final 1853	Average 1208	Bump Plug to 3000	Breakdown	Type	Volume bbl	Density lb/gal					
Avg. N2 Percent %	Designed Slurry Volume 690.3 bbl	Displacement 436.1 bbl	Mix Water Temp 65 degF	Cement Circulated to Surface? <input checked="" type="checkbox"/>		Volume bbl						
				Washed Thru Perfs <input type="checkbox"/>		To ft						
Customer or Authorized Representative Josh Barkell / Jackie MacKinley			Schlumberger Supervisor Wence Luste			Circulation Lost <input type="checkbox"/>	Job Completed <input checked="" type="checkbox"/>					
						-	-					