



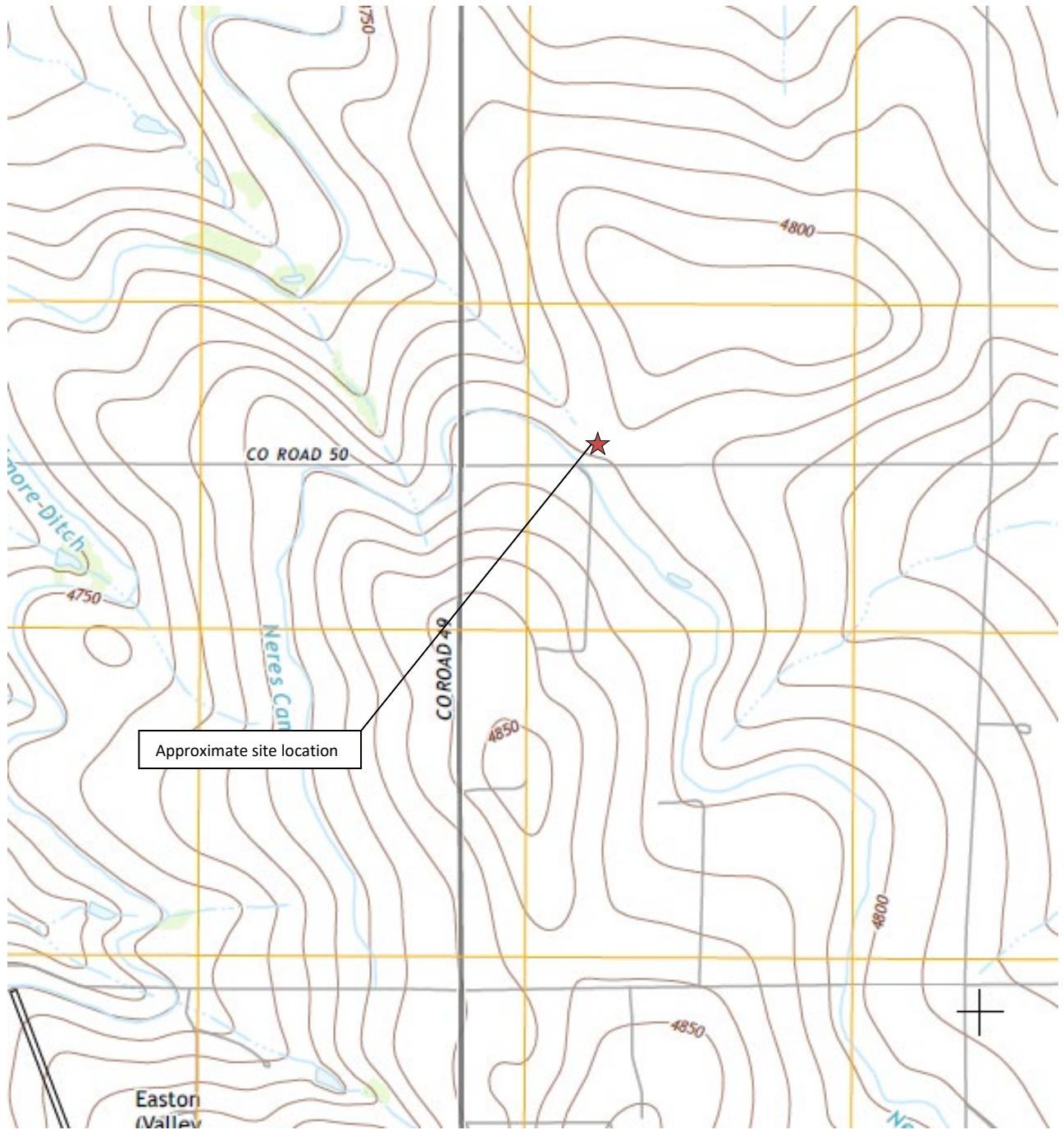
## **FIGURES:**

Figure 1: Topographic Site Location Map

Figure 2: Aerial Site Location Map

Figure 3a: Pothole Sample Location Map

Figure 3b: Pothole Analytical Map



Approximate site location



**Topographic Site Location Map**  
 Gemini B #31-11, 12, 13, 14, 25  
 Flow Line Release  
 40.348611 / -104.597026  
 SE¼ SW¼ SEC.31 T5N R64W 6PM  
 Weld County, Colorado  
 Remediation # 12355



**EAGLE**  
 ENVIRONMENTAL  
 CONSULTING, INC.

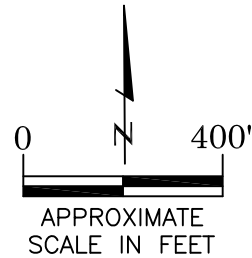
Source: USGS 7.5 Minute Topographic Map, Valley View School, CO Quadrangle 2013

**Figure 1**



**LEGEND**

- GEMINI B #31-11, 12, 13, 14, 25 TANK BATTERY
- GEMINI B #31-11 WELL HEAD
- GEMINI B #31-12 WELL HEAD
- GEMINI B #31-13 WELL HEAD
- GEMINI B #31-14 WELL HEAD
- GEMINI B #31-25 WELL HEAD



AERIAL SITE LOCATION MAP  
 GEMINI B #31-11, 12, 13, 14, 25  
 FLOW LINE RELEASE  
 40.348611 / -104.597026  
 SE1/4 SW1/4 SEC.31 T5N R64W 6PM  
 WELD COUNTY, COLORADO  
 REMEDIATION # 12355

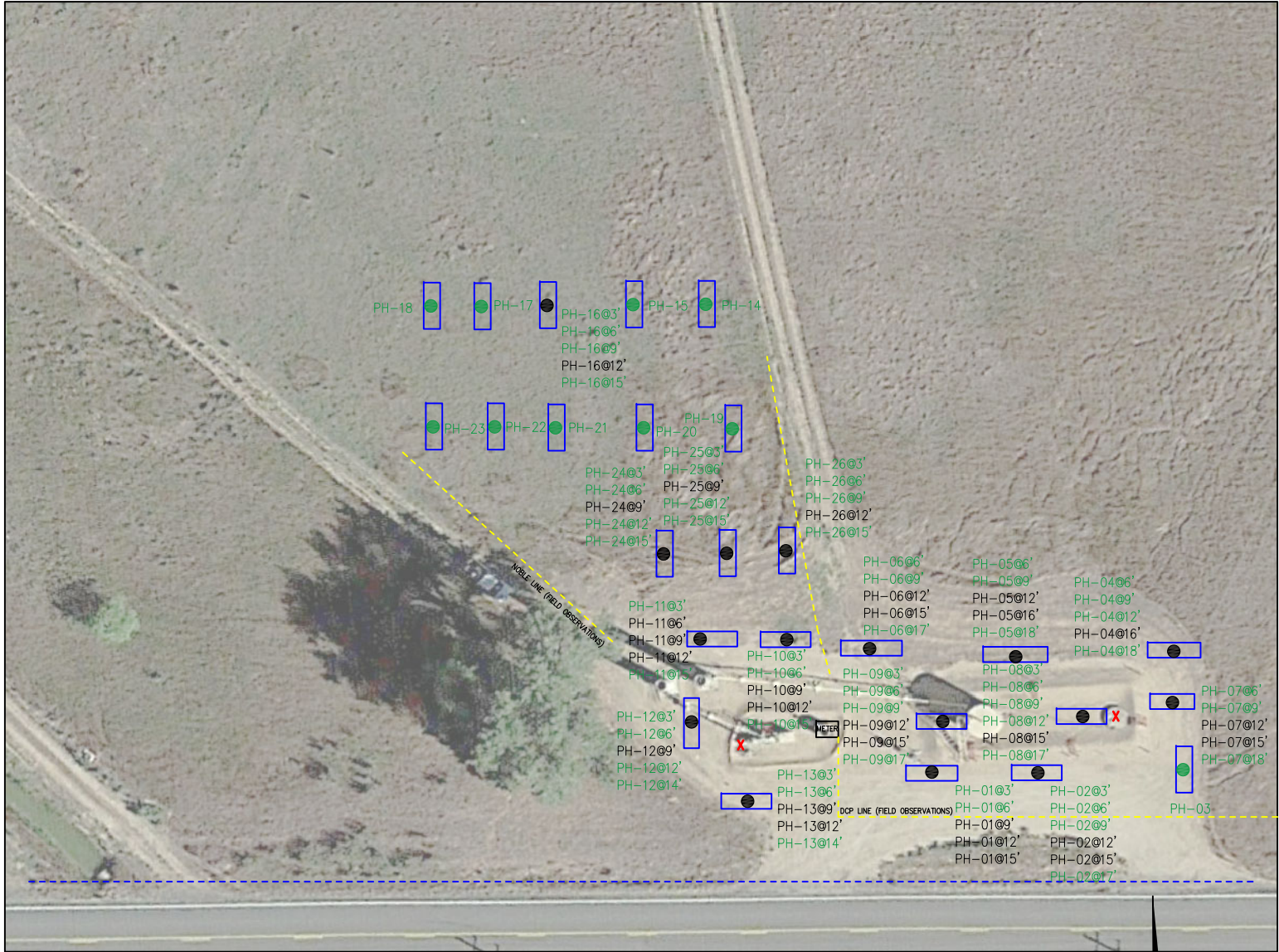
DATE:  
02/13/19

FIG. NO.  
2

DRAWN BY:  
ar

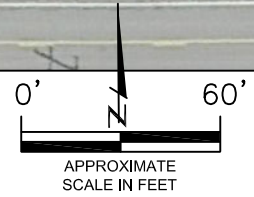


**EAGLE**  
 ENVIRONMENTAL  
 CONSULTING, INC.  
 4101 INCA STREET, DENVER, CO 80211  
 Ph: 303-433-0479 • F: 303-325-5449



- LEGEND**
- X APPROXIMATE RELEASE LOCATIONS
  - APPROXIMATE 12" WATER UTILITY LOCATION
  - APPROXIMATE UNDERGROUND UTILITY LOCATIONS
  - APPROXIMATE 50-FOOT TREE SETBACK
  - APPROXIMATE POTHOLE TEST PIT LOCATIONS
  - APPROXIMATE POTHOLE SOIL SAMPLES SUBMITTED FOR LABORATORY ANALYSIS
  - APPROXIMATE POTHOLE SOIL SAMPLES COLLECTED FOR FIELD SCREENING WITH PHOTOIONIZATION DETECTOR (PID)

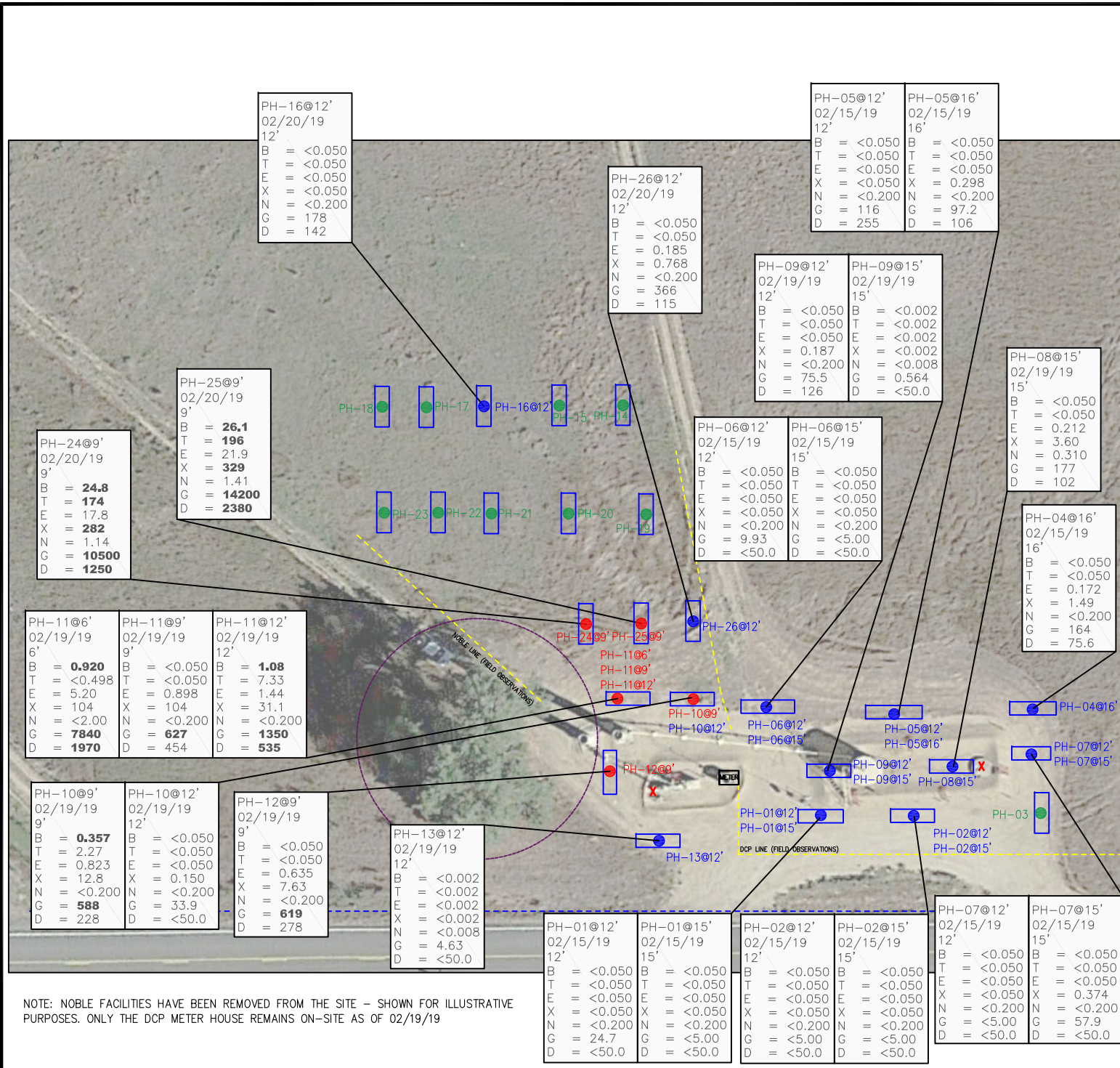
NOTE: NOBLE FACILITIES HAVE BEEN REMOVED FROM THE SITE – SHOWN FOR ILLUSTRATIVE PURPOSES. ONLY THE DCP METER HOUSE REMAINS ON-SITE AS OF 02/19/19



POTHOLE SAMPLE LOCATION MAP  
 GEMINI B #31-11, 12, 13, 14, 25  
 FLOW LINE RELEASE  
 40.348611 / -104.597026  
 SE1/4 SW1/4 SEC.31 T5N R64W 6PM  
 WELD COUNTY, COLORADO  
 REMEDIATION # 12355

DATE:  
02/25/19  
 DRAWN BY:  
AMN  
 FIG. NO. 3a

**EAGLE**  
 ENVIRONMENTAL  
 CONSULTING, INC.  
 4101 INCA STREET, DENVER, CO 80211  
 Ph: 303-433-0479 • F: 303-325-5449



**LEGEND**

- X APPROXIMATE RELEASE LOCATIONS
- APPROXIMATE 12" WATER UTILITY LOCATION
- APPROXIMATE UNDERGROUND UTILITY LOCATIONS
- APPROXIMATE 50-FOOT TREE SETBACK
- APPROXIMATE POTHOLE TEST PIT LOCATIONS
- POTHOLE SOIL SAMPLES ABOVE COGCC TABLE 910-1 REGULATORY LIMITS
- POTHOLE SOIL SAMPLES BELOW COGCC TABLE 910-1 REGULATORY LIMITS
- APPROXIMATE POTHOLE SOIL SAMPLES COLLECTED FOR FIELD SCREENING WITH PHOTOIONIZATION DETECTOR (PID)

**PARAMETERS**

SOIL SAMPLE LOCATION  
DATE  
DEPTH (FEET)  
B = BENZENE (mg/kg)  
T = TOLUENE (mg/kg)  
E = ETHYLBENZENE (mg/kg)  
X = TOTAL XYLENES (mg/kg)  
N = NAPHTHALENE (mg/kg)  
G = TPH-GRO (mg/kg)  
D = TPH-DRO (mg/kg)

mg/kg = MILLIGRAMS PER KILOGRAM  
TPH-GRO = TOTAL PETROLEUM HYDROCARBONS - GASOLINE RANGE ORGANICS  
TPH-DRO = TOTAL PETROLEUM HYDROCARBONS - DIESEL RANGE ORGANICS

NOTE: VALUES PRESENTED WITH A LESS THAN SYMBOL (<) DID NOT CONTAIN CONCENTRATIONS AT OR ABOVE LABORATORY DETECTION LIMITS

VALUES PRESENTED IN **BOLD** TYPEFACE EXCEED COGCC TABLE 910-1 REGULATORY LIMITS FOR THAT COMPOUND.

COGCC - COLORADO OIL AND GAS CONSERVATION COMMISSION

APPROXIMATE SCALE IN FEET

**POTHOLE ANALYTICAL MAP**  
GEMINI B #31-11, 12, 13, 14, 25  
FLOW LINE RELEASE  
40.348611 / -104.597026  
SE1/4 SW1/4 SEC.31 T5N R64W 6PM  
WELD COUNTY, COLORADO  
REMEDIATION # 12355

DATE: 03/04/19  
DRAWN BY: AMN  
FIG. NO. 3b

**EAGLE ENVIRONMENTAL CONSULTING, INC.**  
4101 INCA STREET, DENVER, CO 80211  
PH: 303-433-0479 • F: 303-325-5449

NOTE: NOBLE FACILITIES HAVE BEEN REMOVED FROM THE SITE - SHOWN FOR ILLUSTRATIVE PURPOSES. ONLY THE DCP METER HOUSE REMAINS ON-SITE AS OF 02/19/19



**TABLES:**

Table 1: Soil Analytical Results Summary

**TABLE 1**  
**SOIL ANALYTICAL RESULTS SUMMARY**  
**GEMINI B #31-11, 12, 13, 14, 25**  
**FLOW LINE RELEASE**  
**40.348611 / -104.597026**  
**SE¼ SW¼ SEC.31 T5N R64W 6PM**  
**WELD COUNTY, COLORADO**  
**REMEDATION # 12355**

Sample Location (Latitude/Longitude)	Date	Approximate Depth (feet)	Benzene (mg/kg)	Toluene (mg/kg)	Ethylbenzene (mg/kg)	Total Xylenes (mg/kg)	Naphthalene (mg/kg)	TPH-GRO (mg/kg)	TPH-DRO (mg/kg)	Specific Conductance (mmhos/cm)	pH (pH units)	SAR
<b>COGCC Table 910-1 Regulatory Limits (mg/kg)</b>			<b>0.17</b>	<b>85</b>	<b>100</b>	<b>175</b>	<b>23</b>	<b>500</b>		<b>&lt;4</b>	<b>6 to 9</b>	<b>&lt;12</b>
MW-01 @ 7.5-10' (40.348598/-104.596953)	10/17/18	7.5-10	<0.050	<0.050	0.116	1.64	<0.200	165	<50.0	NA	NA	NA
MW-01 @ 12.5-15' (40.348598/-104.596953)	10/17/18	12.5-15	0.012	0.011	<0.002	<0.002	<0.008	<0.200	<50.0	NA	NA	NA
MW-02 @ 7.5-10' (40.348562/-104.597124)	10/17/18	7.5-10	0.008	0.008	0.002	<0.002	<0.008	<0.200	<50.0	NA	NA	NA
MW-02 @ 17.5-20' (40.348562/-104.597124)	10/17/18	17.5-20	0.025	0.023	<0.002	0.007	<0.008	<0.200	<50.0	NA	NA	NA
MW-03 @ 7.5-10' (40.348624/-104.597153)	10/17/18	7.5-20	<b>87.2</b>	<b>533</b>	48.6	<b>749</b>	<0.200	<b>13500</b>	<b>1390</b>	NA	NA	NA
MW-03 @ 15-17.5' (40.348624/-104.597153)	10/17/18	15-17.5	<0.002	<0.002	<0.002	<0.002	<0.008	<0.200	<50.0	NA	NA	NA
MW-04 @ 5-7.5' (40.348710/-104.597192)	10/17/18	5-7.5	0.114	0.377	0.356	5.82	<0.200	186	<50.0	NA	NA	NA
MW-04 @ 10-12.5' (40.348710/-104.597192)	10/17/18	10-12.5	<0.002	<0.002	<0.002	<0.002	<0.008	<0.200	<50.0	NA	NA	NA
MW-05 @ 10-12.5' (40.348709/-104.597051)	10/17/18	10-12.5	<0.002	<0.002	0.008	0.041	<0.008	14.4	<50.0	NA	NA	NA
MW-05 @ 12.5-15' (40.348709/-104.597051)	10/17/18	12.5-15	<0.002	<0.002	<0.002	<0.002	<0.008	<0.200	<50.0	NA	NA	NA
MW-06 @ 10-12.5' (40.348710/-104.596927)	10/17/18	10-12.5	<0.050	<0.050	<0.050	0.272	<0.200	<b>839</b>	151	NA	NA	NA
MW-06 @ 12.5-15' (40.348710/-104.596927)	10/17/18	12.5-15	<0.002	<0.002	<0.002	<0.002	<0.008	0.588	<50.0	NA	NA	NA
SS-01 @ 4-5' (40.348617/-104.597021)	10/17/18	4-5	<0.002	<0.002	<0.002	<0.002	<0.008	<0.200	<50.0	NA	NA	NA
SB-01 @ 7.5-10' (40.348624/-104.597237)	10/25/18	7.5-10	<b>39.6</b>	<b>244</b>	21.8	<b>342</b>	<2.00	<b>8110</b>	<b>1590</b>	NA	NA	NA
MW-07 @ 10-12' (40.348557/-104.597285)	12/17/18	10-12	0.014	0.004	<0.002	<0.002	<0.008	<0.200	<50.0	NA	NA	NA
MW-08 @ 5-7.5' (40.348649/-104.597266)	12/17/18	5-7.5	<b>1.92</b>	7.35	3.84	57.0	0.398	<b>1220</b>	420	NA	NA	NA
AS-01 @ 10-12.5' (40.348589/-104.597179)	12/17/18	10-12.5	<0.050	0.075	0.134	0.920	<0.200	79.7	<50.0	NA	NA	NA

**TABLE 1**  
**SOIL ANALYTICAL RESULTS SUMMARY**  
**GEMINI B #31-11, 12, 13, 14, 25**  
**FLOW LINE RELEASE**  
**40.348611 / -104.597026**  
**SE¼ SW¼ SEC.31 T5N R64W 6PM**  
**WELD COUNTY, COLORADO**  
**REMEDIATION # 12355**

Sample Location (Latitude/Longitude)	Date	Approximate Depth (feet)	Benzene (mg/kg)	Toluene (mg/kg)	Ethylbenzene (mg/kg)	Total Xylenes (mg/kg)	Naphthalene (mg/kg)	TPH-GRO (mg/kg)	TPH-DRO (mg/kg)	Specific Conductance (mmhos/cm)	pH (pH units)	SAR
<b>COGCC Table 910-1 Regulatory Limits (mg/kg)</b>			<b>0.17</b>	<b>85</b>	<b>100</b>	<b>175</b>	<b>23</b>	<b>500</b>		<b>&lt;4</b>	<b>6 to 9</b>	<b>&lt;12</b>
SVE-01 @ 5-7.5' (40.348607/-104.597219)	12/17/18	5-7.5	0.264	1.18	1.04	12.7	<0.200	269	236	NA	NA	NA
SB-02 @ 7.5-10' (40.348643/-104.597406)	12/17/18	7.5-10	0.002	0.002	<0.002	0.005	<0.008	0.480	<50.0	NA	NA	NA
*N.Wall @ 3'	01/21/19	3	<0.0020	<0.0050	<0.0050	<0.010	<0.010	<50	<50	0.475	8.50	0.459
*E. Wall @ 3'	01/21/19	3	<0.0020	<0.0050	<0.0050	<0.010	<0.010	<50	<50	NA	NA	NA
*S. Wall @ 3'	01/21/19	3	<0.0020	<0.0050	<0.0050	<0.010	<0.010	<50	<50	NA	NA	NA
*W. Wall @ 3'	01/21/19	3	<0.0020	<0.0050	<0.0050	<0.010	<0.010	<50	<50	NA	NA	NA
*Floor @ 6'	01/21/19	6	1.7	6.8	7.4	130	4.7	<50	4200	NA	NA	NA
*Floor @ 14'	01/21/19	14	<0.0020	<0.0050	<0.0050	<0.010	<0.010	<50	<50	NA	NA	NA
PH-01 @ 12' (40.345582 / -104.596848)	02/15/19	12	<0.050	<0.050	<0.050	<0.050	<0.200	24.7	<50.0	NA	NA	NA
PH-01 @ 15' (40.345582 / -104.596848)	02/15/19	15	<0.050	<0.050	<0.050	<0.050	<0.200	<5.00	<50.0	NA	NA	NA
PH-02 @ 12' (40.348588 / -104.596697)	02/15/19	12	<0.050	<0.050	<0.050	<0.050	<0.200	<5.00	<50.0	NA	NA	NA
PH-02 @ 15' (40.348588 / -104.596697)	02/15/19	15	<0.050	<0.050	<0.050	<0.050	<0.200	<5.00	<50.0	NA	NA	NA
PH-04 @ 16' (40.348698 / -104.596548)	02/15/19	16	<0.050	<0.050	0.172	1.49	<0.200	164	75.6	NA	NA	NA
PH-05 @ 12' (40.348691 / -104.596748)	02/15/19	12	<0.050	<0.050	<0.050	<0.050	<0.200	116	255	NA	NA	NA
PH-05 @ 16' (40.348691 / -104.596748)	02/15/19	16	<0.050	<0.050	<0.050	0.298	<0.200	97.2	106	NA	NA	NA
PH-06 @ 12' (40.348700 / -104.596932)	02/15/19	12	<0.050	<0.050	<0.050	<0.050	<0.200	9.93	<50.0	NA	NA	NA
PH-06 @ 15' (40.348700 / -104.596932)	02/15/19	15	<0.050	<0.050	<0.050	<0.050	<0.200	<5.00	<50.0	NA	NA	NA

**TABLE 1**  
**SOIL ANALYTICAL RESULTS SUMMARY**  
**GEMINI B #31-11, 12, 13, 14, 25**  
**FLOW LINE RELEASE**  
**40.348611 / -104.597026**  
**SE¼ SW¼ SEC.31 T5N R64W 6PM**  
**WELD COUNTY, COLORADO**  
**REMEDIATION # 12355**

Sample Location (Latitude/Longitude)	Date	Approximate Depth (feet)	Benzene (mg/kg)	Toluene (mg/kg)	Ethylbenzene (mg/kg)	Total Xylenes (mg/kg)	Naphthalene (mg/kg)	TPH-GRO (mg/kg)	TPH-DRO (mg/kg)	Specific Conductance (mmhos/cm)	pH (pH units)	SAR
<b>COGCC Table 910-1 Regulatory Limits (mg/kg)</b>			<b>0.17</b>	<b>85</b>	<b>100</b>	<b>175</b>	<b>23</b>	<b>500</b>		<b>&lt;4</b>	<b>6 to 9</b>	<b>&lt;12</b>
PH-07 @ 12' (40.348645 / -104.596554)	02/15/19	12	<0.050	<0.050	<0.050	<0.050	<0.200	<5.00	<50.0	NA	NA	NA
PH-07 @ 15' (40.348645 / -104.596554)	02/15/19	15	<0.050	<0.050	<0.050	0.374	<0.200	57.9	<50.0	NA	NA	NA
PH-08 @ 15' (40.348636 / -104.596655)	02/19/19	15	<0.050	<0.050	0.212	3.60	0.310	177	102	NA	NA	NA
PH-09 @ 12' (40.348622 / -104.596832)	02/19/19	12	<0.050	<0.050	<0.050	0.187	<0.200	75.5	126	NA	NA	NA
PH-09 @ 15' (40.348622 / -104.596832)	02/19/19	15	<0.002	<0.002	<0.002	<0.002	<0.008	0.564	<50.0	NA	NA	NA
PH-10 @ 9' (40.348706 / -104.597034)	02/19/19	9	<b>0.357</b>	2.27	0.823	12.8	<0.200	<b>588</b>	228	NA	NA	NA
PH-10 @ 12' (40.348706 / -104.597034)	02/19/19	12	<0.050	<0.050	<0.050	0.150	<0.200	33.9	<50.0	NA	NA	NA
PH-11 @ 6' (40.348709 / -104.597147)	02/19/19	6	<b>0.920</b>	<0.498	5.20	104	<2.00	<b>7840</b>	<b>1970</b>	NA	NA	NA
PH-11 @ 9' (40.348709 / -104.597147)	02/19/19	9	<0.050	<0.050	0.898	10.4	<0.200	<b>627</b>	454	NA	NA	NA
PH-11 @ 12' (40.348709 / -104.597147)	02/19/19	12	<b>1.08</b>	7.33	1.44	31.1	<2.00	<b>1350</b>	<b>535</b>	NA	NA	NA
PH-12 @ 9' (40.348628 / -104.597160)	02/19/19	9	<0.050	<0.050	0.635	7.63	<2.00	<b>619</b>	278	NA	NA	NA
PH-13 @ 12' (40.348549 / -104.597093)	02/19/19	12	<0.002	<0.002	<0.002	<0.002	<0.008	4.63	<50.0	NA	NA	NA
PH-16 @ 12' (40.349041 / -104.597344)	02/20/19	12	<0.050	<0.050	<0.050	<0.050	<0.200	178	142	NA	NA	NA
PH-24 @ 9' (40.348796 / -104.597209)	02/20/19	9	<b>24.8</b>	<b>174</b>	17.8	<b>282</b>	1.14	<b>10500</b>	<b>1250</b>	NA	NA	NA

**TABLE 1**  
**SOIL ANALYTICAL RESULTS SUMMARY**  
**GEMINI B #31-11, 12, 13, 14, 25**  
**FLOW LINE RELEASE**  
**40.348611 / -104.597026**  
**SE¼ SW¼ SEC.31 T5N R64W 6PM**  
**WELD COUNTY, COLORADO**  
**REMEDIAION # 12355**

Sample Location (Latitude/Longitude)	Date	Approximate Depth (feet)	Benzene (mg/kg)	Toluene (mg/kg)	Ethylbenzene (mg/kg)	Total Xylenes (mg/kg)	Naphthalene (mg/kg)	TPH-GRO (mg/kg)	TPH-DRO (mg/kg)	Specific Conductance (mmhos/cm)	pH (pH units)	SAR
<b>COGCC Table 910-1 Regulatory Limits (mg/kg)</b>			<b>0.17</b>	<b>85</b>	<b>100</b>	<b>175</b>	<b>23</b>	<b>500</b>		<b>&lt;4</b>	<b>6 to 9</b>	<b>&lt;12</b>
PH-25 @ 9' (40.348791 / -104.597137)	02/20/19	9	<b>26.1</b>	<b>196</b>	21.9	<b>329</b>	1.41	<b>14200</b>	<b>2380</b>	NA	NA	NA
PH-26 @ 12' (40.348797 / -104.597033)	02/20/19	12	<0.050	<0.050	0.185	0.768	<0.200	366	115	NA	NA	NA

COGCC = Colorado Oil and Gas Conservation Commission

mg/kg = milligrams per kilogram

mmhos/cm = millimhos per centimeter

NA = Not Analyzed

TPH-GRO = Total Petroleum Hydrocarbons - Gasoline Range Organics

TPH-DRO = Total Petroleum Hydrocarbons - Diesel Range Organics

SAR = Sodium Adsorption Ratio

Note: Values presented with a less than symbol (<) did not contain concentrations at or above the laboratory reporting limit.

Note: Values presented in **BOLD** contained concentrations exceeding COGCC Table 910-1 Regulatory Limits

\*Data provided to EAGLE from Fremont Environmental



## **ATTACHMENT A**

### Laboratory Analytical Reports



February 18, 2019

Eagle Environmental Consulting, Inc.

Martin C Eckert III

4101 Inca Street

Denver

CO 80211

**Project Name - Noble - Gemini B  
#31-11,12,13,14,25**

**Project Number - [none]**

Attached are your analytical results for Noble - Gemini B #31-11,12,13,14,25 received by Origins Laboratory, Inc. February 15, 2019. This project is associated with Origins project number Y902211-01.

The analytical results in the following report were analyzed under the guidelines of EPA Methods. These methods are identified as follows; "SW" are defined in SW-846, "EPA" are defined in 40CFR part 136 and "SM" are defined in the most current revision of Standard Methods For the Examination of Water and Wastewater.

The analytical results apply specifically to the samples and analyses specified per the attached Chain of Custody. As such, this report shall not be reproduced except in full, without the written approval of Origin's laboratory.

Unless otherwise noted, the analytical results for all soil samples are reported on a wet weight basis. All analytical analyses were performed under NELAP guidelines unless noted by a data qualifier.

Any holding time exceedances, deviations from the method specifications or deviations from Origins Laboratory's Standard Operating Procedures are outlined in the case narrative.

Thank you for selecting Origins for your analytical needs. Please contact us with any questions concerning this report, or if we can help with anything at all.

Origins Laboratory, Inc.  
303.433.1322  
o-squad@oelabinc.com



1725 Elk Place, Denver, CO 80211 | Phone: 303.433.1322 | Fax: 303.265.9645

Eagle Environmental Consulting, Inc.  
4101 Inca Street  
Denver CO 80211

Martin C Eckert III  
Project Number: [none]  
Project: Noble - Gemini B #31-11,12,13,14,25

## CROSS REFERENCE REPORT

Sample ID	Laboratory ID	Matrix	Date Sampled	Date Received
PH-01@12'	Y902211-01	Soil	February 15, 2019 9:50	02/15/2019 15:55
PH-01@15'	Y902211-02	Soil	February 15, 2019 9:55	02/15/2019 15:55
PH-02@12'	Y902211-03	Soil	February 15, 2019 10:07	02/15/2019 15:55
PH-02@15'	Y902211-04	Soil	February 15, 2019 10:10	02/15/2019 15:55
PH-04@16'	Y902211-05	Soil	February 15, 2019 12:12	02/15/2019 15:55
PH-05@12'	Y902211-06	Soil	February 15, 2019 12:45	02/15/2019 15:55
PH-05@16'	Y902211-07	Soil	February 15, 2019 12:52	02/15/2019 15:55
PH-06@12'	Y902211-08	Soil	February 15, 2019 13:12	02/15/2019 15:55
PH-06@15'	Y902211-09	Soil	February 15, 2019 13:15	02/15/2019 15:55
PH-07@12'	Y902211-10	Soil	February 15, 2019 13:39	02/15/2019 15:55
PH-07@15'	Y902211-11	Soil	February 15, 2019 13:42	02/15/2019 15:55

Origins Laboratory, Inc.



*The results in this report apply to the samples analyzed in accordance with the chain of custody document. This analytical report must be reproduced in its entirety.*

Eagle Environmental Consulting, Inc.  
 4101 Inca Street  
 Denver CO 80211

Martin C Eckert III  
 Project Number: [none]  
 Project: Noble - Gemini B #31-11,12,13,14,25

www.originslaboratory.com

99022111

page 1 of 2

**ORIGINS**  
 LABORATORY, INC

Client: Eagle Env. Consulting, Inc.  
 Address: 4101 Inca Street  
 Telephone Number: Denver, CO, 80211  
 Email Address: MCE3@originslab.com

Project Manager: Martin Eckert III  
 Project Name: Gemini B #31-11,12,13,14,25  
 Project Number: \_\_\_\_\_  
 Samples Collected By: A. Mathis

Fax: 303.265.9645 | Phone: 303.433.1322 | Denver, CO 80211

Sample ID Description	Date Sampled	Time Sampled	# of Containers	Preservative				Matrix			Analysis		Sample Instructions			
				Unpreserved	HCl	HNO <sub>3</sub>	Other	Groundwater	Soil	Air Summ #	Other	BTCX		GC	Methylene	
PH-01 @ 12'	02/15/19	0950	2	X					X							
PH-01 @ 15'		0955	1													
PH-02 @ 12'		1007	1													
PH-02 @ 15'		1010	1													
PH-04 @ 14'		1212														
PH-05 @ 12'		1245														
PH-05 @ 14'		1252														
PH-04 @ 12'		1312														
PH-06 @ 15'		1315														
PH-07 @ 12'		1339														
Relinquished By: <u>[Signature]</u>	Date: 2/15/19	Time: 1555	Time: 1555	Received By: <u>[Signature]</u>	Date: 2/15/19	Time: 1555	Time: 1555	Received By: <u>[Signature]</u>	Date: 2/15/19	Time: 1555	Time: 1555	Turnaround Time: Same Day <input checked="" type="checkbox"/> 24 Hr <input type="checkbox"/> 48 Hr <input type="checkbox"/> 72 Hr <input type="checkbox"/> Standard <input type="checkbox"/>				
Relinquished By: _____	Date: _____	Time: _____	Time: _____	Received By: _____	Date: _____	Time: _____	Time: _____	Received By: _____	Date: _____	Time: _____	Time: _____					

Temp Received: 2.6 Date Results Needed: Noble

Bill Mathis

Origins Laboratory, Inc.

*Jefe Pellegrini*

The results in this report apply to the samples analyzed in accordance with the chain of custody document. This analytical report must be reproduced in its entirety.



Eagle Environmental Consulting, Inc.  
 4101 Inca Street  
 Denver CO 80211

Martin C Eckert III  
 Project Number: [none]  
 Project: Noble - Gemini B #31-11,12,13,14,25

Origins Laboratory

F-012207-01-R1  
 Effective Date: 01/09/12

**Sample Receipt Checklist**

Origins Work Order: 4902211

Client: Eagle Env

Client Project ID: Noble - Gemini B #31-11,12,13,14,25

Checklist Completed by: Dan Lee

Shipped Via: HD  
 (UPS, FedEx, Hand Delivered, Pick-up, etc.)

Date/time completed: 2-15-11

Airbill #: NA

Matrix(s) Received: (Check all that apply):  Soil/Solid  Water  Other: \_\_\_\_\_

Cooler Number/Temperature: 1 2.6 °C 1 °C 1 °C 1 °C (Describe)

Thermometer ID: 6003

Requirement Description	Yes	No	N/A	Comments (if any)
If samples require cooling, was the temperature between 0°C to ≤ 6°C <sup>(1)</sup> ?	<input checked="" type="checkbox"/>			
Is there ice present (document if blue ice is used)	<input checked="" type="checkbox"/>			
Are custody seals present on cooler? (if so, document in comments if they are signed and dated, broken or intact)		<input checked="" type="checkbox"/>		
Are custody seals present on each sample container? (if so, document in comments if they are signed and dated, broken or intact)		<input checked="" type="checkbox"/>		
Were all samples received intact <sup>(1)</sup> ?	<input checked="" type="checkbox"/>			
Was adequate sample volume provided <sup>(1)</sup> ?	<input checked="" type="checkbox"/>			
Are short holding time analytes or samples with HTs due within 48 hours present <sup>(1)</sup> ?		<input checked="" type="checkbox"/>		
Is a chain-of-custody (COC) present and filled out completely <sup>(1)</sup> ?	<input checked="" type="checkbox"/>			
Does the COC agree with the number and type of sample bottles received <sup>(1)</sup> ?	<input checked="" type="checkbox"/>			
Do the sample IDs on the bottle labels match the COC <sup>(1)</sup> ?	<input checked="" type="checkbox"/>			
Is the COC properly relinquished by the client with date and time recorded <sup>(1)</sup> ?	<input checked="" type="checkbox"/>			
For volatiles in water – is there headspace (> ¼ inch bubble) present? <b>If yes, contact client and note in narrative.</b>			<input checked="" type="checkbox"/>	
Are samples preserved that require preservation and was it checked <sup>(1)</sup> ? (note ID of confirmation instrument used in comments) / (preservation is not confirmed for subcontracted analyses in order to insure sample integrity)/(pH <2 for samples preserved with HNO3, HCL, H2SO4) / (pH >10 for samples preserved with NaAsO2+NaOH, ZnAc+NaOH)			<input checked="" type="checkbox"/>	
Additional Comments (if any):				

<sup>(1)</sup>If NO, then contact the client before proceeding with analysis and note date, time and person contacted as well as the corrective action to in the additional comments (above) and the case narrative.

Reviewed by: [Signature] (Project Manager)

Date/Time Reviewed: 2-15-11

Origins Laboratory, Inc.

Jefe Pellegrini

The results in this report apply to the samples analyzed in accordance with the chain of custody document. This analytical report must be reproduced in its entirety.

Eagle Environmental Consulting, Inc.  
 4101 Inca Street  
 Denver CO 80211

Martin C Eckert III  
 Project Number: [none]  
 Project: Noble - Gemini B #31-11,12,13,14,25

**PH-01@12'**

**2/15/2019 9:50:00AM**

Analyte	Result	Reporting Limit	Units	Dilution	Batch	Analyst	Prepared	Analyzed	Notes
---------	--------	-----------------	-------	----------	-------	---------	----------	----------	-------

**Origins Laboratory, Inc.**  
**Y902211-01 (Soil)**

**Diesel Range Organics (DRO/TEPH) by EPA 8015C**

Diesel (C10-C28)	ND	50.0	mg/kg	1	B9B1508	JTD	02/15/2019	02/15/2019	U
Surrogate: <i>o</i> -Terphenyl	77.0 %	59-131			"	"	"	"	

**GBTEX + Napthalene by 8260C**

Gasoline Range Hydrocarbons	24.7	5.00	mg/kg	25	B9B1507	JTD	02/15/2019	02/15/2019	
Benzene	ND	0.050	"	"	"	JTD	"	"	U
Toluene	ND	0.050	"	"	"	JTD	"	"	U
Ethylbenzene	ND	0.050	"	"	"	JTD	"	"	U
Xylenes, total	ND	0.050	"	"	"	JTD	"	"	U
Napthalene	ND	0.200	"	"	"	JTD	"	"	U

Surrogate: 1,2-Dichloroethane-d4	96.9 %	70-130			"	"	"	"	
Surrogate: Toluene-d8	105 %	70-130			"	"	"	"	
Surrogate: 4-Bromofluorobenzene	98.2 %	70-130			"	"	"	"	

Origins Laboratory, Inc.



The results in this report apply to the samples analyzed in accordance with the chain of custody document. This analytical report must be reproduced in its entirety.

Eagle Environmental Consulting, Inc.  
 4101 Inca Street  
 Denver CO 80211

Martin C Eckert III  
 Project Number: [none]  
 Project: Noble - Gemini B #31-11,12,13,14,25

PH-01@15'

2/15/2019 9:55:00AM

Analyte	Result	Reporting Limit	Units	Dilution	Batch	Analyst	Prepared	Analyzed	Notes
---------	--------	-----------------	-------	----------	-------	---------	----------	----------	-------

**Origins Laboratory, Inc.**  
 Y902211-02 (Soil)

**Diesel Range Organics (DRO/TEPH) by EPA 8015C**

Diesel (C10-C28)	ND	50.0	mg/kg	1	B9B1508	JTD	02/15/2019	02/15/2019	U
Surrogate: o-Terphenyl	77.0 %	59-131			"	"	"	"	

**GBTEX + Napthalene by 8260C**

Gasoline Range Hydrocarbons	ND	5.00	mg/kg	25	B9B1507	JTD	02/15/2019	02/15/2019	U
Benzene	ND	0.050	"	"	"	JTD	"	"	U
Toluene	ND	0.050	"	"	"	JTD	"	"	U
Ethylbenzene	ND	0.050	"	"	"	JTD	"	"	U
Xylenes, total	ND	0.050	"	"	"	JTD	"	"	U
Napthalene	ND	0.200	"	"	"	JTD	"	"	U
Surrogate: 1,2-Dichloroethane-d4	95.9 %	70-130			"	"	"	"	
Surrogate: Toluene-d8	102 %	70-130			"	"	"	"	
Surrogate: 4-Bromofluorobenzene	96.4 %	70-130			"	"	"	"	

Origins Laboratory, Inc.



The results in this report apply to the samples analyzed in accordance with the chain of custody document. This analytical report must be reproduced in its entirety.

Eagle Environmental Consulting, Inc.  
 4101 Inca Street  
 Denver CO 80211

Martin C Eckert III  
 Project Number: [none]  
 Project: Noble - Gemini B #31-11,12,13,14,25

**PH-02@12'**

**2/15/2019 10:07:00AM**

Analyte	Result	Reporting Limit	Units	Dilution	Batch	Analyst	Prepared	Analyzed	Notes
---------	--------	-----------------	-------	----------	-------	---------	----------	----------	-------

**Origins Laboratory, Inc.**  
**Y902211-03 (Soil)**

**Diesel Range Organics (DRO/TEPH) by EPA 8015C**

Diesel (C10-C28)	ND	50.0	mg/kg	1	B9B1508	JTD	02/15/2019	02/15/2019	U
<i>Surrogate: o-Terphenyl</i>	77.2 %	59-131			"	"	"	"	

**GBTEX + Napthalene by 8260C**

Gasoline Range Hydrocarbons	ND	5.00	mg/kg	25	B9B1507	JTD	02/15/2019	02/15/2019	U
Benzene	ND	0.050	"	"	"	JTD	"	"	U
Toluene	ND	0.050	"	"	"	JTD	"	"	U
Ethylbenzene	ND	0.050	"	"	"	JTD	"	"	U
Xylenes, total	ND	0.050	"	"	"	JTD	"	"	U
Napthalene	ND	0.200	"	"	"	JTD	"	"	U
<i>Surrogate: 1,2-Dichloroethane-d4</i>	97.4 %	70-130			"	"	"	"	
<i>Surrogate: Toluene-d8</i>	102 %	70-130			"	"	"	"	
<i>Surrogate: 4-Bromofluorobenzene</i>	96.9 %	70-130			"	"	"	"	

Origins Laboratory, Inc.



*The results in this report apply to the samples analyzed in accordance with the chain of custody document. This analytical report must be reproduced in its entirety.*

Eagle Environmental Consulting, Inc.  
 4101 Inca Street  
 Denver CO 80211

Martin C Eckert III  
 Project Number: [none]  
 Project: Noble - Gemini B #31-11,12,13,14,25

**PH-02@15'**  
**2/15/2019 10:10:00AM**

Analyte	Result	Reporting Limit	Units	Dilution	Batch	Analyst	Prepared	Analyzed	Notes
---------	--------	-----------------	-------	----------	-------	---------	----------	----------	-------

**Origins Laboratory, Inc.**  
**Y902211-04 (Soil)**

**Diesel Range Organics (DRO/TEPH) by EPA 8015C**

Diesel (C10-C28)	ND	50.0	mg/kg	1	B9B1508	JTD	02/15/2019	02/15/2019	U
<i>Surrogate: o-Terphenyl</i>	75.8 %	59-131			"	"	"	"	

**GBTEX + Napthalene by 8260C**

Gasoline Range Hydrocarbons	ND	5.00	mg/kg	25	B9B1507	JTD	02/15/2019	02/15/2019	U
Benzene	ND	0.050	"	"	"	JTD	"	"	U
Toluene	ND	0.050	"	"	"	JTD	"	"	U
Ethylbenzene	ND	0.050	"	"	"	JTD	"	"	U
Xylenes, total	ND	0.050	"	"	"	JTD	"	"	U
Napthalene	ND	0.200	"	"	"	JTD	"	"	U
<i>Surrogate: 1,2-Dichloroethane-d4</i>	95.6 %	70-130			"	"	"	"	
<i>Surrogate: Toluene-d8</i>	102 %	70-130			"	"	"	"	
<i>Surrogate: 4-Bromofluorobenzene</i>	98.3 %	70-130			"	"	"	"	

Origins Laboratory, Inc.



*The results in this report apply to the samples analyzed in accordance with the chain of custody document. This analytical report must be reproduced in its entirety.*

Eagle Environmental Consulting, Inc.  
 4101 Inca Street  
 Denver CO 80211

Martin C Eckert III  
 Project Number: [none]  
 Project: Noble - Gemini B #31-11,12,13,14,25

**PH-04@16'**

**2/15/2019 12:12:00PM**

Analyte	Result	Reporting Limit	Units	Dilution	Batch	Analyst	Prepared	Analyzed	Notes
---------	--------	-----------------	-------	----------	-------	---------	----------	----------	-------

**Origins Laboratory, Inc.**  
**Y902211-05 (Soil)**

**Diesel Range Organics (DRO/TEPH) by EPA 8015C**

Diesel (C10-C28)	75.6	50.0	mg/kg	1	B9B1508	JTD	02/15/2019	02/15/2019	
------------------	------	------	-------	---	---------	-----	------------	------------	--

Surrogate: o-Terphenyl	75.2 %	59-131			"	"	"	"	
------------------------	--------	--------	--	--	---	---	---	---	--

**GBTEX + Napthalene by 8260C**

Gasoline Range Hydrocarbons	164	5.00	mg/kg	25	B9B1507	JTD	02/15/2019	02/16/2019	
Benzene	ND	0.050	"	"	"	JTD	"	"	U
Toluene	ND	0.050	"	"	"	JTD	"	"	U
Ethylbenzene	0.172	0.050	"	"	"	JTD	"	"	
Xylenes, total	1.49	0.050	"	"	"	JTD	"	"	
Naphthalene	ND	0.200	"	"	"	JTD	"	"	U

Surrogate: 1,2-Dichloroethane-d4	99.0 %	70-130			"	"	"	"	
Surrogate: Toluene-d8	121 %	70-130			"	"	"	"	
Surrogate: 4-Bromofluorobenzene	101 %	70-130			"	"	"	"	

Origins Laboratory, Inc.



The results in this report apply to the samples analyzed in accordance with the chain of custody document. This analytical report must be reproduced in its entirety.

Eagle Environmental Consulting, Inc.  
 4101 Inca Street  
 Denver CO 80211

Martin C Eckert III  
 Project Number: [none]  
 Project: Noble - Gemini B #31-11,12,13,14,25

**PH-05@12'**

**2/15/2019 12:45:00PM**

Analyte	Result	Reporting Limit	Units	Dilution	Batch	Analyst	Prepared	Analyzed	Notes
---------	--------	-----------------	-------	----------	-------	---------	----------	----------	-------

**Origins Laboratory, Inc.**  
**Y902211-06 (Soil)**

**Diesel Range Organics (DRO/TEPH) by EPA 8015C**

Diesel (C10-C28)	255	50.0	mg/kg	1	B9B1508	JTD	02/15/2019	02/15/2019	
------------------	-----	------	-------	---	---------	-----	------------	------------	--

Surrogate: <i>o</i> -Terphenyl	84.8 %	59-131			"	"	"	"	
--------------------------------	--------	--------	--	--	---	---	---	---	--

**GBTEX + Napthalene by 8260C**

Gasoline Range Hydrocarbons	116	5.00	mg/kg	25	B9B1507	JTD	02/15/2019	02/16/2019	
Benzene	ND	0.050	"	"	"	JTD	"	"	U
Toluene	ND	0.050	"	"	"	JTD	"	"	U
Ethylbenzene	ND	0.050	"	"	"	JTD	"	"	U
Xylenes, total	ND	0.050	"	"	"	JTD	"	"	U
Naphthalene	ND	0.200	"	"	"	JTD	"	"	U

Surrogate: 1,2-Dichloroethane-d4	94.8 %	70-130			"	"	"	"	
Surrogate: Toluene-d8	106 %	70-130			"	"	"	"	
Surrogate: 4-Bromofluorobenzene	98.5 %	70-130			"	"	"	"	

Origins Laboratory, Inc.



The results in this report apply to the samples analyzed in accordance with the chain of custody document. This analytical report must be reproduced in its entirety.

Eagle Environmental Consulting, Inc.  
 4101 Inca Street  
 Denver CO 80211

Martin C Eckert III  
 Project Number: [none]  
 Project: Noble - Gemini B #31-11,12,13,14,25

**PH-05@16'**

**2/15/2019 12:52:00PM**

Analyte	Result	Reporting Limit	Units	Dilution	Batch	Analyst	Prepared	Analyzed	Notes
---------	--------	-----------------	-------	----------	-------	---------	----------	----------	-------

**Origins Laboratory, Inc.**  
**Y902211-07 (Soil)**

**Diesel Range Organics (DRO/TEPH) by EPA 8015C**

Diesel (C10-C28)	106	50.0	mg/kg	1	B9B1508	JTD	02/15/2019	02/15/2019	
------------------	-----	------	-------	---	---------	-----	------------	------------	--

Surrogate: o-Terphenyl	81.0 %	59-131			"	"	"	"	
------------------------	--------	--------	--	--	---	---	---	---	--

**GBTEX + Napthalene by 8260C**

Gasoline Range Hydrocarbons	97.2	5.00	mg/kg	25	B9B1507	JTD	02/15/2019	02/15/2019	
Benzene	ND	0.050	"	"	"	JTD	"	"	U
Toluene	ND	0.050	"	"	"	JTD	"	"	U
Ethylbenzene	ND	0.050	"	"	"	JTD	"	"	U
Xylenes, total	0.298	0.050	"	"	"	JTD	"	"	
Naphthalene	ND	0.200	"	"	"	JTD	"	"	U

Surrogate: 1,2-Dichloroethane-d4	96.9 %	70-130			"	"	"	"	
Surrogate: Toluene-d8	104 %	70-130			"	"	"	"	
Surrogate: 4-Bromofluorobenzene	99.0 %	70-130			"	"	"	"	

Origins Laboratory, Inc.



The results in this report apply to the samples analyzed in accordance with the chain of custody document. This analytical report must be reproduced in its entirety.

Eagle Environmental Consulting, Inc.  
 4101 Inca Street  
 Denver CO 80211

Martin C Eckert III  
 Project Number: [none]  
 Project: Noble - Gemini B #31-11,12,13,14,25

**PH-06@12'**

**2/15/2019 1:12:00PM**

Analyte	Result	Reporting Limit	Units	Dilution	Batch	Analyst	Prepared	Analyzed	Notes
---------	--------	-----------------	-------	----------	-------	---------	----------	----------	-------

**Origins Laboratory, Inc.**  
**Y902211-08 (Soil)**

**Diesel Range Organics (DRO/TEPH) by EPA 8015C**

Diesel (C10-C28)	ND	50.0	mg/kg	1	B9B1508	JTD	02/15/2019	02/15/2019	U
Surrogate: <i>o</i> -Terphenyl	78.9 %	59-131			"	"	"	"	

**GBTEX + Napthalene by 8260C**

Gasoline Range Hydrocarbons	<b>9.93</b>	5.00	mg/kg	25	B9B1507	JTD	02/15/2019	02/16/2019	
Benzene	ND	0.050	"	"	"	JTD	"	"	U
Toluene	ND	0.050	"	"	"	JTD	"	"	U
Ethylbenzene	ND	0.050	"	"	"	JTD	"	"	U
Xylenes, total	ND	0.050	"	"	"	JTD	"	"	U
Napthalene	ND	0.200	"	"	"	JTD	"	"	U

Surrogate: 1,2-Dichloroethane-d4	96.1 %	70-130			"	"	"	"	
Surrogate: Toluene-d8	99.0 %	70-130			"	"	"	"	
Surrogate: 4-Bromofluorobenzene	96.7 %	70-130			"	"	"	"	

Origins Laboratory, Inc.



The results in this report apply to the samples analyzed in accordance with the chain of custody document. This analytical report must be reproduced in its entirety.

Eagle Environmental Consulting, Inc.  
 4101 Inca Street  
 Denver CO 80211

Martin C Eckert III  
 Project Number: [none]  
 Project: Noble - Gemini B #31-11,12,13,14,25

**PH-06@15'**

**2/15/2019 1:15:00PM**

Analyte	Result	Reporting Limit	Units	Dilution	Batch	Analyst	Prepared	Analyzed	Notes
---------	--------	-----------------	-------	----------	-------	---------	----------	----------	-------

**Origins Laboratory, Inc.**  
**Y902211-09 (Soil)**

**Diesel Range Organics (DRO/TEPH) by EPA 8015C**

Diesel (C10-C28)	ND	50.0	mg/kg	1	B9B1508	JTD	02/15/2019	02/15/2019	U
Surrogate: <i>o</i> -Terphenyl	78.6 %	59-131			"	"	"	"	

**GBTEX + Napthalene by 8260C**

Gasoline Range Hydrocarbons	ND	5.00	mg/kg	25	B9B1507	JTD	02/15/2019	02/15/2019	U
Benzene	ND	0.050	"	"	"	JTD	"	"	U
Toluene	ND	0.050	"	"	"	JTD	"	"	U
Ethylbenzene	ND	0.050	"	"	"	JTD	"	"	U
Xylenes, total	ND	0.050	"	"	"	JTD	"	"	U
Napthalene	ND	0.200	"	"	"	JTD	"	"	U
Surrogate: 1,2-Dichloroethane-d4	96.4 %	70-130			"	"	"	"	
Surrogate: Toluene-d8	102 %	70-130			"	"	"	"	
Surrogate: 4-Bromofluorobenzene	96.3 %	70-130			"	"	"	"	

Origins Laboratory, Inc.



The results in this report apply to the samples analyzed in accordance with the chain of custody document. This analytical report must be reproduced in its entirety.

Eagle Environmental Consulting, Inc.  
 4101 Inca Street  
 Denver CO 80211

Martin C Eckert III  
 Project Number: [none]  
 Project: Noble - Gemini B #31-11,12,13,14,25

**PH-07@12'**

**2/15/2019 1:39:00PM**

Analyte	Result	Reporting Limit	Units	Dilution	Batch	Analyst	Prepared	Analyzed	Notes
---------	--------	-----------------	-------	----------	-------	---------	----------	----------	-------

**Origins Laboratory, Inc.**  
**Y902211-10 (Soil)**

**Diesel Range Organics (DRO/TEPH) by EPA 8015C**

Diesel (C10-C28)	ND	50.0	mg/kg	1	B9B1508	JTD	02/15/2019	02/15/2019	U
<i>Surrogate: o-Terphenyl</i>	82.7 %	59-131			"	"	"	"	

**GBTEX + Napthalene by 8260C**

Gasoline Range Hydrocarbons	ND	5.00	mg/kg	25	B9B1507	JTD	02/15/2019	02/15/2019	U
Benzene	ND	0.050	"	"	"	JTD	"	"	U
Toluene	ND	0.050	"	"	"	JTD	"	"	U
Ethylbenzene	ND	0.050	"	"	"	JTD	"	"	U
Xylenes, total	ND	0.050	"	"	"	JTD	"	"	U
Napthalene	ND	0.200	"	"	"	JTD	"	"	U
<i>Surrogate: 1,2-Dichloroethane-d4</i>	95.7 %	70-130			"	"	"	"	
<i>Surrogate: Toluene-d8</i>	100 %	70-130			"	"	"	"	
<i>Surrogate: 4-Bromofluorobenzene</i>	98.2 %	70-130			"	"	"	"	

Origins Laboratory, Inc.



The results in this report apply to the samples analyzed in accordance with the chain of custody document. This analytical report must be reproduced in its entirety.

Eagle Environmental Consulting, Inc.  
 4101 Inca Street  
 Denver CO 80211

Martin C Eckert III  
 Project Number: [none]  
 Project: Noble - Gemini B #31-11,12,13,14,25

PH-07@15'

2/15/2019 1:42:00PM

Analyte	Result	Reporting Limit	Units	Dilution	Batch	Analyst	Prepared	Analyzed	Notes
---------	--------	-----------------	-------	----------	-------	---------	----------	----------	-------

**Origins Laboratory, Inc.**  
 Y902211-11 (Soil)

**Diesel Range Organics (DRO/TEPH) by EPA 8015C**

Diesel (C10-C28)	ND	50.0	mg/kg	1	B9B1508	JTD	02/15/2019	02/15/2019	U
Surrogate: o-Terphenyl	77.1 %	59-131			"	"	"	"	

**GBTEX + Napthalene by 8260C**

Gasoline Range Hydrocarbons	57.9	5.00	mg/kg	25	B9B1507	JTD	02/15/2019	02/15/2019	
Benzene	ND	0.050	"	"	"	JTD	"	"	U
Toluene	ND	0.050	"	"	"	JTD	"	"	U
Ethylbenzene	ND	0.050	"	"	"	JTD	"	"	U
Xylenes, total	0.374	0.050	"	"	"	JTD	"	"	
Naphthalene	ND	0.200	"	"	"	JTD	"	"	U

Surrogate: 1,2-Dichloroethane-d4	97.0 %	70-130			"	"	"	"	
Surrogate: Toluene-d8	103 %	70-130			"	"	"	"	
Surrogate: 4-Bromofluorobenzene	98.8 %	70-130			"	"	"	"	

Origins Laboratory, Inc.



The results in this report apply to the samples analyzed in accordance with the chain of custody document. This analytical report must be reproduced in its entirety.

Eagle Environmental Consulting, Inc.  
 4101 Inca Street  
 Denver CO 80211

Martin C Eckert III  
 Project Number: [none]  
 Project: Noble - Gemini B #31-11,12,13,14,25

**Volatile Organic Compounds by GC/MS SW846 8260C - Quality Control**  
**Origins Laboratory, Inc.**

Analyte	Result	Reporting Limit	Units	Spike Level	Source Result	%REC	%REC Limits	RPD	RPD Limit	Notes
---------	--------	-----------------	-------	-------------	---------------	------	-------------	-----	-----------	-------

Batch B9B1507 - EPA 5030 (soil)

Blank (B9B1507-BLK1)

Prepared: 02/15/2019 Analyzed: 02/15/2019

Gasoline Range Hydrocarbons	ND	0.200	mg/kg							U
Benzene	ND	0.002	"							U
Toluene	ND	0.002	"							U
Ethylbenzene	ND	0.002	"							U
Xylenes, total	ND	0.002	"							U
Naphthalene	ND	0.008	"							U
Surrogate: 1,2-Dichloroethane-d4	0.12		"	0.125		99.4	70-130			
Surrogate: Toluene-d8	0.13		"	0.125		100	70-130			
Surrogate: 4-Bromofluorobenzene	0.12		"	0.125		99.1	70-130			

Origins Laboratory, Inc.



The results in this report apply to the samples analyzed in accordance with the chain of custody document. This analytical report must be reproduced in its entirety.

Eagle Environmental Consulting, Inc.  
 4101 Inca Street  
 Denver CO 80211

Martin C Eckert III  
 Project Number: [none]  
 Project: Noble - Gemini B #31-11,12,13,14,25

**Volatile Organic Compounds by GC/MS SW846 8260C - Quality Control**  
**Origins Laboratory, Inc.**

Analyte	Result	Reporting Limit	Units	Spike Level	Source Result	%REC	%REC Limits	RPD	RPD Limit	Notes
---------	--------	-----------------	-------	-------------	---------------	------	-------------	-----	-----------	-------

**Batch B9B1507 - EPA 5030 (soil)**

**LCS (B9B1507-BS1)**

Prepared: 02/15/2019 Analyzed: 02/15/2019

Benzene	0.096	0.002	mg/kg	0.100		95.9	70-130			
Toluene	0.095	0.002	"	0.100		95.1	70-130			
Ethylbenzene	0.095	0.002	"	0.100		95.3	70-130			
m,p-Xylene	0.185	0.004	"	0.200		92.7	70-130			
o-Xylene	0.084	0.002	"	0.100		84.0	70-130			
Naphthalene	0.109	0.008	"	0.100		109	70-130			
Surrogate: 1,2-Dichloroethane-d4	0.12		"	0.125		96.0	70-130			
Surrogate: Toluene-d8	0.13		"	0.125		102	70-130			
Surrogate: 4-Bromofluorobenzene	0.12		"	0.125		94.9	70-130			

Origins Laboratory, Inc.



*The results in this report apply to the samples analyzed in accordance with the chain of custody document. This analytical report must be reproduced in its entirety.*

Eagle Environmental Consulting, Inc.  
 4101 Inca Street  
 Denver CO 80211

Martin C Eckert III  
 Project Number: [none]  
 Project: Noble - Gemini B #31-11,12,13,14,25

**Volatile Organic Compounds by GC/MS SW846 8260C - Quality Control**  
**Origins Laboratory, Inc.**

Analyte	Result	Reporting Limit	Units	Spike Level	Source Result	%REC	%REC Limits	RPD	RPD Limit	Notes
---------	--------	-----------------	-------	-------------	---------------	------	-------------	-----	-----------	-------

Batch B9B1507 - EPA 5030 (soil)

Matrix Spike (B9B1507-MS1)	Source: Y902211-02			Prepared: 02/15/2019 Analyzed: 02/15/2019						
Benzene	2.97	0.050	mg/kg	2.50	ND	119	70-130			
Toluene	3.05	0.050	"	2.50	ND	122	70-130			
Ethylbenzene	3.15	0.050	"	2.50	ND	126	70-130			
m,p-Xylene	6.17	0.100	"	5.00	ND	123	70-130			
o-Xylene	3.00	0.050	"	2.50	ND	120	70-130			
Naphthalene	2.69	0.200	"	2.50	ND	108	70-130			
Surrogate: 1,2-Dichloroethane-d4	0.12		"	0.125		94.1	70-130			
Surrogate: Toluene-d8	0.13		"	0.125		104	70-130			
Surrogate: 4-Bromofluorobenzene	0.12		"	0.125		98.0	70-130			

Origins Laboratory, Inc.



*The results in this report apply to the samples analyzed in accordance with the chain of custody document. This analytical report must be reproduced in its entirety.*

Eagle Environmental Consulting, Inc.  
 4101 Inca Street  
 Denver CO 80211

Martin C Eckert III  
 Project Number: [none]  
 Project: Noble - Gemini B #31-11,12,13,14,25

**Volatile Organic Compounds by GC/MS SW846 8260C - Quality Control**  
**Origins Laboratory, Inc.**

Analyte	Result	Reporting Limit	Units	Spike Level	Source Result	%REC	%REC Limits	RPD	RPD Limit	Notes
---------	--------	-----------------	-------	-------------	---------------	------	-------------	-----	-----------	-------

Batch B9B1507 - EPA 5030 (soil)

Matrix Spike Dup (B9B1507-MSD1)	Source: Y902211-02			Prepared: 02/15/2019 Analyzed: 02/15/2019						
Benzene	2.75	0.050	mg/kg	2.50	ND	110	70-130	7.55	20	
Toluene	2.74	0.050	"	2.50	ND	110	70-130	10.6	20	
Ethylbenzene	2.79	0.050	"	2.50	ND	112	70-130	12.0	20	
m,p-Xylene	5.58	0.100	"	5.00	ND	112	70-130	10.1	20	
o-Xylene	2.76	0.050	"	2.50	ND	111	70-130	8.31	20	
Naphthalene	2.91	0.200	"	2.50	ND	116	70-130	7.84	20	
Surrogate: 1,2-Dichloroethane-d4	0.12		"	0.125		94.0	70-130			
Surrogate: Toluene-d8	0.13		"	0.125		102	70-130			
Surrogate: 4-Bromofluorobenzene	0.11		"	0.125		89.5	70-130			

Origins Laboratory, Inc.



*The results in this report apply to the samples analyzed in accordance with the chain of custody document. This analytical report must be reproduced in its entirety.*

Eagle Environmental Consulting, Inc.  
 4101 Inca Street  
 Denver CO 80211

Martin C Eckert III  
 Project Number: [none]  
 Project: Noble - Gemini B #31-11,12,13,14,25

**Volatile Organic Compounds by GC/MS SW846 8260C - Quality Control**  
**Origins Laboratory, Inc.**

Analyte	Result	Reporting Limit	Units	Spike Level	Source Result	%REC	%REC Limits	RPD	RPD Limit	Notes
---------	--------	-----------------	-------	-------------	---------------	------	-------------	-----	-----------	-------

**Extractable Petroleum Hydrocarbons by 8015C - Quality Control**  
**Origins Laboratory, Inc.**

Analyte	Result	Reporting Limit	Units	Spike Level	Source Result	%REC	%REC Limits	RPD	RPD Limit	Notes
---------	--------	-----------------	-------	-------------	---------------	------	-------------	-----	-----------	-------

**Batch B9B1508 - EPA 3580**

**Blank (B9B1508-BLK1)**

Prepared: 02/15/2019 Analyzed: 02/15/2019

Diesel (C10-C28)	ND	50.0	mg/kg							U
Surrogate: o-Terphenyl	38		"	50.0		75.6	59-131			

**LCS (B9B1508-BS1)**

Prepared: 02/15/2019 Analyzed: 02/15/2019

Diesel (C10-C28)	902	50.0	mg/kg	1000		90.2	64-121			
Surrogate: o-Terphenyl	44		"	50.0		87.8	59-131			

**Matrix Spike (B9B1508-MS1)**

**Source: Y902211-02**

Prepared: 02/15/2019 Analyzed: 02/15/2019

Diesel (C10-C28)	909	50.0	mg/kg	1000	ND	90.9	53-125			
Surrogate: o-Terphenyl	42		"	50.0		84.1	59-131			

**Matrix Spike Dup (B9B1508-MSD1)**

**Source: Y902211-02**

Prepared: 02/15/2019 Analyzed: 02/15/2019

Diesel (C10-C28)	952	50.0	mg/kg	1000	ND	95.2	53-125	4.65	20	
Surrogate: o-Terphenyl	43		"	50.0		86.8	59-131			

Origins Laboratory, Inc.



The results in this report apply to the samples analyzed in accordance with the chain of custody document. This analytical report must be reproduced in its entirety.

Eagle Environmental Consulting, Inc.  
4101 Inca Street  
Denver CO 80211

Martin C Eckert III  
Project Number: [none]  
Project: Noble - Gemini B #31-11,12,13,14,25

---

**Notes and Definitions**

U Sample is Non-Detect.

ND Analyte NOT DETECTED at or above the reporting limit

RPD Relative Percent Difference

All soil results are reported at a wet weight basis.

Origins Laboratory, Inc.



*The results in this report apply to the samples analyzed in accordance with the chain of custody document. This analytical report must be reproduced in its entirety.*

---

Jen Pellegrini For Noelle Doyle Mathis, President



February 20, 2019

Eagle Environmental Consulting, Inc.

Martin C Eckert III

4101 Inca Street

Denver

CO 80211

**Project Name - Noble - Gemini B  
#31-11,12,13,14,25**

**Project Number - [none]**

Attached are your analytical results for Noble - Gemini B #31-11,12,13,14,25 received by Origins Laboratory, Inc. February 19, 2019. This project is associated with Origins project number Y902246-01.

The analytical results in the following report were analyzed under the guidelines of EPA Methods. These methods are identified as follows; "SW" are defined in SW-846, "EPA" are defined in 40CFR part 136 and "SM" are defined in the most current revision of Standard Methods For the Examination of Water and Wastewater.

The analytical results apply specifically to the samples and analyses specified per the attached Chain of Custody. As such, this report shall not be reproduced except in full, without the written approval of Origin's laboratory.

Unless otherwise noted, the analytical results for all soil samples are reported on a wet weight basis. All analytical analyses were performed under NELAP guidelines unless noted by a data qualifier.

Any holding time exceedances, deviations from the method specifications or deviations from Origins Laboratory's Standard Operating Procedures are outlined in the case narrative.

Thank you for selecting Origins for your analytical needs. Please contact us with any questions concerning this report, or if we can help with anything at all.

Origins Laboratory, Inc.  
303.433.1322  
o-squad@oelabinc.com



1725 Elk Place, Denver, CO 80211 | Phone: 303.433.1322 | Fax: 303.265.9645

Eagle Environmental Consulting, Inc.  
4101 Inca Street  
Denver CO 80211

Martin C Eckert III  
Project Number: [none]  
Project: Noble - Gemini B #31-11,12,13,14,25

## CROSS REFERENCE REPORT

Sample ID	Laboratory ID	Matrix	Date Sampled	Date Received
PH-08@15'	Y902246-01	Soil	February 19, 2019 10:11	02/19/2019 14:35
PH-09@12'	Y902246-02	Soil	February 19, 2019 10:33	02/19/2019 14:35
PH-09@15'	Y902246-03	Soil	February 19, 2019 10:36	02/19/2019 14:35
PH-10@9'	Y902246-04	Soil	February 19, 2019 11:07	02/19/2019 14:35
PH-10@12'	Y902246-05	Soil	February 19, 2019 11:11	02/19/2019 14:35
PH-11@6'	Y902246-06	Soil	February 19, 2019 11:34	02/19/2019 14:35
PH-11@9'	Y902246-07	Soil	February 19, 2019 11:38	02/19/2019 14:35
PH-11@12'	Y902246-08	Soil	February 19, 2019 11:41	02/19/2019 14:35
PH-12@9'	Y902246-09	Soil	February 19, 2019 12:12	02/19/2019 14:35
PH-13@12'	Y902246-10	Soil	February 19, 2019 13:09	02/19/2019 14:35

Origins Laboratory, Inc.



*The results in this report apply to the samples analyzed in accordance with the chain of custody document. This analytical report must be reproduced in its entirety.*

Eagle Environmental Consulting, Inc.  
 4101 Inca Street  
 Denver CO 80211

Martin C Eckert III  
 Project Number: [none]  
 Project: Noble - Gemini B #31-11,12,13,14,25

www.originslaboratory.com

Y902246

page 1 of 1

**ORIGINS**  
 LABORATORY, INC

Client: Eagle Env Consulting, Inc.  
 Address: 4101 Inca Street  
Denver, CO 80211  
 Telephone Number: 303-433-0479  
 Email Address: MCE\_S@eagle-env.com

Project Manager: Martin Eckert III  
 Project Name: Gemini B #31-11,12,13,14,25  
 Project Number: \_\_\_\_\_  
 Samples Collected By: A. Neukirch

Fax: 303.265.9645 | Phone: 303.433.1322 | Denver, CO 80211

Sample ID Description	Date Sampled	Time Sampled	# of Containers	Preservative				Matrix			Analysis			Sample Instructions		
				Unpreserved	HCl	HNO <sub>3</sub>	Other	Groundwater	Soil	Air Summa #	Other	BTEX	GC		TOC	+ Nephelometric
PH-08 @ 15'	02/19/19	1011	2	X				X								
PH-09 @ 12'		1033	1													
PH-09 @ 15'		1036														
PH-10 @ 9'		1107														
PH-10 @ 12'		1111														
PH-11 @ 6'		1134														
PH-11 @ 9'		1138														
PH-11 @ 12'		1141														
PH-12 @ 9'		1212														
PH-13 @ 12'		1309														
Relinquished By: <u>[Signature]</u>	Date: <u>02/19/19</u>	Time: <u>1435</u>	Time: <u>1435</u>	Received By: <u>[Signature]</u>	Date: <u>2/19/19</u>	Time: <u>1435</u>	Time: <u>1435</u>	Received By: <u>[Signature]</u>	Date: <u>2/19/19</u>	Time: <u>1435</u>	Time: <u>1435</u>	Turnaround Time: <input checked="" type="checkbox"/> Same Day <input type="checkbox"/> 24 Hr <input type="checkbox"/> 48 Hr <input type="checkbox"/> 72 Hr <input type="checkbox"/> Standard				

Temp Received: 3.1  
 Date Results Needed: Noble

Origins Laboratory, Inc.

*Jefe Pellegrini*

The results in this report apply to the samples analyzed in accordance with the chain of custody document. This analytical report must be reproduced in its entirety.

Eagle Environmental Consulting, Inc.  
 4101 Inca Street  
 Denver CO 80211

Martin C Eckert III  
 Project Number: [none]  
 Project: Noble - Gemini B #31-11,12,13,14,25

Origins Laboratory

F-012207-01-R1  
 Effective Date: 01/09/12

**Sample Receipt Checklist**

Origins Work Order: 1902246

Client: Eagle

Client Project ID: Noble - Gemini B 31-11,12,13,14,25

Checklist Completed by: JG

Shipped Via: HD  
(UPS, FedEx, Hand Delivered, Pick-up, etc.)

Date/time completed: 2/19/2019

Airbill #: N/A

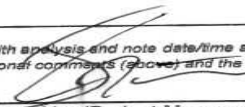
Matrix(s) Received: (Check all that apply):  Soil/Solid  Water  Other: \_\_\_\_\_  
(Describe)

Cooler Number/Temperature: 1 / 3.1 °C \_\_\_\_\_ / \_\_\_\_\_ °C \_\_\_\_\_ / \_\_\_\_\_ °C \_\_\_\_\_ / \_\_\_\_\_ °C

Thermometer ID: T003

Requirement Description	Yes	No	N/A	Comments (if any)
If samples require cooling, was the temperature between 0°C to ≤ 6°C <sup>(1)</sup> ?	<input checked="" type="checkbox"/>			
Is there ice present (document if blue ice is used)	<input checked="" type="checkbox"/>			
Are custody seals present on cooler? (if so, document in comments if they are signed and dated, broken or intact)		<input checked="" type="checkbox"/>		
Are custody seals present on each sample container? (if so, document in comments if they are signed and dated, broken or intact)		<input checked="" type="checkbox"/>		
Were all samples received intact <sup>(1)</sup> ?	<input checked="" type="checkbox"/>			
Was adequate sample volume provided <sup>(1)</sup> ?	<input checked="" type="checkbox"/>			
Are short holding time analytes or samples with HTs due within 48 hours present <sup>(1)</sup> ?		<input checked="" type="checkbox"/>		
Is a chain-of-custody (COC) present and filled out completely <sup>(1)</sup> ?	<input checked="" type="checkbox"/>			
Does the COC agree with the number and type of sample bottles received <sup>(1)</sup> ?	<input checked="" type="checkbox"/>			
Do the sample IDs on the bottle labels match the COC <sup>(1)</sup> ?	<input checked="" type="checkbox"/>			
Is the COC properly relinquished by the client with date and time recorded <sup>(1)</sup> ?	<input checked="" type="checkbox"/>			
For volatiles in water - Is there headspace (> ¼ inch bubble) present? If yes, contact client and note in narrative.			<input checked="" type="checkbox"/>	
Are samples preserved that require preservation and was it checked <sup>(1)</sup> ? (note ID of confirmation instrument used in comments) / (preservation is not confirmed for subcontracted analyses in order to insure sample integrity)/(pH <2 for samples preserved with HNO3, HCL, H2SO4) / ( pH >10 for samples preserved with NaAsO2+NaOH, ZnAc+NaOH)		<input checked="" type="checkbox"/>		
Additional Comments (if any):				

<sup>(1)</sup>If NO, then contact the client before proceeding with analysis and note date/time and person contacted as well as the corrective action in the additional comments (above) and the case narrative.

  
 Reviewed by (Project Manager)

2/19/19  
 Date/Time Reviewed

Origins Laboratory, Inc.



The results in this report apply to the samples analyzed in accordance with the chain of custody document. This analytical report must be reproduced in its entirety.

Eagle Environmental Consulting, Inc.  
 4101 Inca Street  
 Denver CO 80211

Martin C Eckert III  
 Project Number: [none]  
 Project: Noble - Gemini B #31-11,12,13,14,25

PH-08@15'  
 2/19/2019 10:11:00AM

Analyte	Result	Reporting Limit	Units	Dilution	Batch	Analyst	Prepared	Analyzed	Notes
---------	--------	-----------------	-------	----------	-------	---------	----------	----------	-------

**Origins Laboratory, Inc.**  
 Y902246-01 (Soil)

**Diesel Range Organics (DRO/TEPH) by EPA 8015C**

Diesel (C10-C28)	102	50.0	mg/kg	1	B9B1903	KDK	02/19/2019	02/19/2019	
------------------	-----	------	-------	---	---------	-----	------------	------------	--

Surrogate: o-Terphenyl	74.3 %	59-131			"	"	"	"	
------------------------	--------	--------	--	--	---	---	---	---	--

**GBTEX + Napthalene by 8260C**

Gasoline Range Hydrocarbons	177	5.00	mg/kg	25	B9B1902	KDK	02/19/2019	02/19/2019	
Benzene	ND	0.050	"	"	"	KDK	"	"	U
Toluene	ND	0.050	"	"	"	KDK	"	"	U
Ethylbenzene	0.212	0.050	"	"	"	KDK	"	"	
Xylenes, total	3.60	0.050	"	"	"	KDK	"	"	
Naphthalene	0.310	0.200	"	"	"	KDK	"	"	

Surrogate: 1,2-Dichloroethane-d4	85.2 %	70-130			"	"	"	"	
Surrogate: Toluene-d8	95.1 %	70-130			"	"	"	"	
Surrogate: 4-Bromofluorobenzene	103 %	70-130			"	"	"	"	

Origins Laboratory, Inc.



The results in this report apply to the samples analyzed in accordance with the chain of custody document. This analytical report must be reproduced in its entirety.

Eagle Environmental Consulting, Inc.  
 4101 Inca Street  
 Denver CO 80211

Martin C Eckert III  
 Project Number: [none]  
 Project: Noble - Gemini B #31-11,12,13,14,25

**PH-09@12'**  
**2/19/2019 10:33:00AM**

Analyte	Result	Reporting Limit	Units	Dilution	Batch	Analyst	Prepared	Analyzed	Notes
---------	--------	-----------------	-------	----------	-------	---------	----------	----------	-------

**Origins Laboratory, Inc.**  
**Y902246-02 (Soil)**

**Diesel Range Organics (DRO/TEPH) by EPA 8015C**

Diesel (C10-C28)	126	50.0	mg/kg	1	B9B1903	KDK	02/19/2019	02/19/2019	
Surrogate: o-Terphenyl	71.8 %	59-131			"	"	"	"	

**GBTEX + Napthalene by 8260C**

Gasoline Range Hydrocarbons	75.5	5.00	mg/kg	25	B9B1902	KDK	02/19/2019	02/19/2019	
Benzene	ND	0.050	"	"	"	KDK	"	"	U
Toluene	ND	0.050	"	"	"	KDK	"	"	U
Ethylbenzene	ND	0.050	"	"	"	KDK	"	"	U
Xylenes, total	0.187	0.050	"	"	"	KDK	"	"	
Naphthalene	ND	0.200	"	"	"	KDK	"	"	U
Surrogate: 1,2-Dichloroethane-d4	82.9 %	70-130			"	"	"	"	
Surrogate: Toluene-d8	97.6 %	70-130			"	"	"	"	
Surrogate: 4-Bromofluorobenzene	102 %	70-130			"	"	"	"	

Origins Laboratory, Inc.



The results in this report apply to the samples analyzed in accordance with the chain of custody document. This analytical report must be reproduced in its entirety.

Eagle Environmental Consulting, Inc.  
 4101 Inca Street  
 Denver CO 80211

Martin C Eckert III  
 Project Number: [none]  
 Project: Noble - Gemini B #31-11,12,13,14,25

PH-09@15'  
 2/19/2019 10:36:00AM

Analyte	Result	Reporting Limit	Units	Dilution	Batch	Analyst	Prepared	Analyzed	Notes
---------	--------	-----------------	-------	----------	-------	---------	----------	----------	-------

**Origins Laboratory, Inc.**  
 Y902246-03 (Soil)

**Diesel Range Organics (DRO/TEPH) by EPA 8015C**

Diesel (C10-C28)	ND	50.0	mg/kg	1	B9B1903	KDK	02/19/2019	02/19/2019	U
Surrogate: o-Terphenyl	71.9 %	59-131			"	"	"	"	

**GBTEX + Napthalene by 8260C**

Gasoline Range Hydrocarbons	0.564	0.200	mg/kg	1	B9B1902	KDK	02/19/2019	02/19/2019	
Benzene	ND	0.002	"	"	"	KDK	"	"	U
Toluene	ND	0.002	"	"	"	KDK	"	"	U
Ethylbenzene	ND	0.002	"	"	"	KDK	"	"	U
Xylenes, total	ND	0.002	"	"	"	KDK	"	"	U
Napthalene	ND	0.008	"	"	"	KDK	"	"	U

Surrogate: 1,2-Dichloroethane-d4	99.1 %	70-130			"	"	"	"	
Surrogate: Toluene-d8	92.5 %	70-130			"	"	"	"	
Surrogate: 4-Bromofluorobenzene	94.5 %	70-130			"	"	"	"	

Origins Laboratory, Inc.



The results in this report apply to the samples analyzed in accordance with the chain of custody document. This analytical report must be reproduced in its entirety.

Eagle Environmental Consulting, Inc.  
 4101 Inca Street  
 Denver CO 80211

Martin C Eckert III  
 Project Number: [none]  
 Project: Noble - Gemini B #31-11,12,13,14,25

**PH-10@9'**  
**2/19/2019 11:07:00AM**

Analyte	Result	Reporting Limit	Units	Dilution	Batch	Analyst	Prepared	Analyzed	Notes
---------	--------	-----------------	-------	----------	-------	---------	----------	----------	-------

**Origins Laboratory, Inc.**  
**Y902246-04 (Soil)**

**Diesel Range Organics (DRO/TEPH) by EPA 8015C**

Diesel (C10-C28)	228	50.0	mg/kg	1	B9B1903	KDK	02/19/2019	02/19/2019	
------------------	-----	------	-------	---	---------	-----	------------	------------	--

Surrogate: <i>o</i> -Terphenyl	75.9 %	59-131			"	"	"	"	
--------------------------------	--------	--------	--	--	---	---	---	---	--

**GBTEX + Napthalene by 8260C**

Gasoline Range Hydrocarbons	588	50.0	mg/kg	250	B9B1902	KDK	02/19/2019	02/19/2019	
Benzene	0.357	0.050	"	25	"	KDK	"	02/19/2019	
Toluene	2.27	0.050	"	"	"	KDK	"	"	
Ethylbenzene	0.823	0.050	"	"	"	KDK	"	"	
Xylenes, total	12.8	0.050	"	"	"	KDK	"	"	
Napthalene	ND	0.200	"	"	"	KDK	"	"	U

Surrogate: 1,2-Dichloroethane-d4	82.8 %	70-130			"	"	"	"	
Surrogate: Toluene-d8	95.0 %	70-130			"	"	"	"	
Surrogate: 4-Bromofluorobenzene	112 %	70-130			"	"	"	"	

Origins Laboratory, Inc.



The results in this report apply to the samples analyzed in accordance with the chain of custody document. This analytical report must be reproduced in its entirety.

Eagle Environmental Consulting, Inc.  
 4101 Inca Street  
 Denver CO 80211

Martin C Eckert III  
 Project Number: [none]  
 Project: Noble - Gemini B #31-11,12,13,14,25

**PH-10@12'**  
**2/19/2019 11:11:00AM**

Analyte	Result	Reporting Limit	Units	Dilution	Batch	Analyst	Prepared	Analyzed	Notes
---------	--------	-----------------	-------	----------	-------	---------	----------	----------	-------

**Origins Laboratory, Inc.**  
**Y902246-05 (Soil)**

**Diesel Range Organics (DRO/TEPH) by EPA 8015C**

Diesel (C10-C28)	ND	50.0	mg/kg	1	B9B1903	KDK	02/19/2019	02/19/2019	U
Surrogate: <i>o</i> -Terphenyl	78.9 %	59-131			"	"	"	"	

**GBTEX + Napthalene by 8260C**

Gasoline Range Hydrocarbons	33.9	5.00	mg/kg	25	B9B1902	KDK	02/19/2019	02/19/2019	
Benzene	ND	0.050	"	"	"	KDK	"	"	U
Toluene	ND	0.050	"	"	"	KDK	"	"	U
Ethylbenzene	ND	0.050	"	"	"	KDK	"	"	U
Xylenes, total	0.150	0.050	"	"	"	KDK	"	"	
Naphthalene	ND	0.200	"	"	"	KDK	"	"	U

Surrogate: 1,2-Dichloroethane-d4	82.8 %	70-130			"	"	"	"	
Surrogate: Toluene-d8	98.4 %	70-130			"	"	"	"	
Surrogate: 4-Bromofluorobenzene	98.3 %	70-130			"	"	"	"	

Origins Laboratory, Inc.



*The results in this report apply to the samples analyzed in accordance with the chain of custody document. This analytical report must be reproduced in its entirety.*

Eagle Environmental Consulting, Inc.  
 4101 Inca Street  
 Denver CO 80211

Martin C Eckert III  
 Project Number: [none]  
 Project: Noble - Gemini B #31-11,12,13,14,25

**PH-11@6'**  
**2/19/2019 11:34:00AM**

Analyte	Result	Reporting Limit	Units	Dilution	Batch	Analyst	Prepared	Analyzed	Notes
---------	--------	-----------------	-------	----------	-------	---------	----------	----------	-------

**Origins Laboratory, Inc.**  
**Y902246-06 (Soil)**

**Diesel Range Organics (DRO/TEPH) by EPA 8015C**

Diesel (C10-C28)	1970	50.0	mg/kg	1	B9B1903	KDK	02/19/2019	02/19/2019	
------------------	------	------	-------	---	---------	-----	------------	------------	--

Surrogate: <i>o</i> -Terphenyl	95.4 %	59-131			"	"	"	"	
--------------------------------	--------	--------	--	--	---	---	---	---	--

**GBTEX + Napthalene by 8260C**

Gasoline Range Hydrocarbons	7840	500	mg/kg	2500	B9B1902	KDK	02/19/2019	02/19/2019	
Benzene	0.920	0.498	"	250	"	KDK	"	02/20/2019	
Toluene	ND	0.498	"	"	"	KDK	"	"	U
Ethylbenzene	5.20	0.498	"	"	"	KDK	"	"	
Xylenes, total	104	0.498	"	"	"	KDK	"	"	
Naphthalene	ND	2.00	"	"	"	KDK	"	"	U

Surrogate: 1,2-Dichloroethane-d4	83.9 %	70-130			"	"	"	"	
Surrogate: Toluene-d8	94.2 %	70-130			"	"	"	"	
Surrogate: 4-Bromofluorobenzene	94.5 %	70-130			"	"	"	"	

Origins Laboratory, Inc.



The results in this report apply to the samples analyzed in accordance with the chain of custody document. This analytical report must be reproduced in its entirety.

Eagle Environmental Consulting, Inc.  
 4101 Inca Street  
 Denver CO 80211

Martin C Eckert III  
 Project Number: [none]  
 Project: Noble - Gemini B #31-11,12,13,14,25

**PH-11@9'**  
**2/19/2019 11:38:00AM**

Analyte	Result	Reporting Limit	Units	Dilution	Batch	Analyst	Prepared	Analyzed	Notes
---------	--------	-----------------	-------	----------	-------	---------	----------	----------	-------

**Origins Laboratory, Inc.**  
**Y902246-07 (Soil)**

**Diesel Range Organics (DRO/TEPH) by EPA 8015C**

Diesel (C10-C28)	<b>454</b>	50.0	mg/kg	1	B9B1903	KDK	02/19/2019	02/19/2019	
------------------	------------	------	-------	---	---------	-----	------------	------------	--

Surrogate: <i>o</i> -Terphenyl	84.7 %	59-131			"	"	"	"	
--------------------------------	--------	--------	--	--	---	---	---	---	--

**GBTEX + Napthalene by 8260C**

Gasoline Range Hydrocarbons	<b>627</b>	50.0	mg/kg	250	B9B1902	KDK	02/19/2019	02/19/2019	
Benzene	ND	0.050	"	25	"	KDK	"	02/20/2019	U
Toluene	ND	0.050	"	"	"	KDK	"	"	U
Ethylbenzene	<b>0.898</b>	0.050	"	"	"	KDK	"	"	
Xylenes, total	<b>10.4</b>	0.050	"	"	"	KDK	"	"	
Naphthalene	ND	0.200	"	"	"	KDK	"	"	U

Surrogate: 1,2-Dichloroethane-d4	78.7 %	70-130			"	"	"	"	
Surrogate: Toluene-d8	95.8 %	70-130			"	"	"	"	
Surrogate: 4-Bromofluorobenzene	112 %	70-130			"	"	"	"	

Origins Laboratory, Inc.



The results in this report apply to the samples analyzed in accordance with the chain of custody document. This analytical report must be reproduced in its entirety.

Eagle Environmental Consulting, Inc.  
 4101 Inca Street  
 Denver CO 80211

Martin C Eckert III  
 Project Number: [none]  
 Project: Noble - Gemini B #31-11,12,13,14,25

**PH-11@12'**  
**2/19/2019 11:41:00AM**

Analyte	Result	Reporting Limit	Units	Dilution	Batch	Analyst	Prepared	Analyzed	Notes
---------	--------	-----------------	-------	----------	-------	---------	----------	----------	-------

**Origins Laboratory, Inc.**  
**Y902246-08 (Soil)**

**Diesel Range Organics (DRO/TEPH) by EPA 8015C**

Diesel (C10-C28)	535	50.0	mg/kg	1	B9B1903	KDK	02/19/2019	02/19/2019	
------------------	-----	------	-------	---	---------	-----	------------	------------	--

Surrogate: <i>o</i> -Terphenyl	82.6 %	59-131			"	"	"	"	
--------------------------------	--------	--------	--	--	---	---	---	---	--

**GBTEX + Napthalene by 8260C**

Gasoline Range Hydrocarbons	1350	50.0	mg/kg	250	B9B1902	KDK	02/19/2019	02/19/2019	
Benzene	1.08	0.498	"	"	"	KDK	"	"	
Toluene	7.33	0.498	"	"	"	KDK	"	"	
Ethylbenzene	1.44	0.498	"	"	"	KDK	"	"	
Xylenes, total	31.1	0.498	"	"	"	KDK	"	"	
Napthalene	ND	2.00	"	"	"	KDK	"	"	U

Surrogate: 1,2-Dichloroethane-d4	86.9 %	70-130			"	"	"	"	
Surrogate: Toluene-d8	95.1 %	70-130			"	"	"	"	
Surrogate: 4-Bromofluorobenzene	101 %	70-130			"	"	"	"	

Origins Laboratory, Inc.



The results in this report apply to the samples analyzed in accordance with the chain of custody document. This analytical report must be reproduced in its entirety.

Eagle Environmental Consulting, Inc.  
 4101 Inca Street  
 Denver CO 80211

Martin C Eckert III  
 Project Number: [none]  
 Project: Noble - Gemini B #31-11,12,13,14,25

**PH-12@9'**  
**2/19/2019 12:12:00PM**

Analyte	Result	Reporting Limit	Units	Dilution	Batch	Analyst	Prepared	Analyzed	Notes
---------	--------	-----------------	-------	----------	-------	---------	----------	----------	-------

**Origins Laboratory, Inc.**  
**Y902246-09 (Soil)**

**Diesel Range Organics (DRO/TEPH) by EPA 8015C**

Diesel (C10-C28)	278	50.0	mg/kg	1	B9B1903	KDK	02/19/2019	02/19/2019	
------------------	-----	------	-------	---	---------	-----	------------	------------	--

Surrogate: o-Terphenyl	80.4 %	59-131			"	"	"	"	
------------------------	--------	--------	--	--	---	---	---	---	--

**GBTEX + Napthalene by 8260C**

Gasoline Range Hydrocarbons	619	50.0	mg/kg	250	B9B1902	KDK	02/19/2019	02/19/2019	
Benzene	ND	0.050	"	25	"	KDK	"	02/20/2019	U
Toluene	ND	0.050	"	"	"	KDK	"	"	U
Ethylbenzene	0.635	0.050	"	"	"	KDK	"	"	
Xylenes, total	7.63	0.050	"	"	"	KDK	"	"	
Naphthalene	ND	0.200	"	"	"	KDK	"	"	U

Surrogate: 1,2-Dichloroethane-d4	76.7 %	70-130			"	"	"	"	
Surrogate: Toluene-d8	95.4 %	70-130			"	"	"	"	
Surrogate: 4-Bromofluorobenzene	111 %	70-130			"	"	"	"	

Origins Laboratory, Inc.



The results in this report apply to the samples analyzed in accordance with the chain of custody document. This analytical report must be reproduced in its entirety.

Eagle Environmental Consulting, Inc.  
 4101 Inca Street  
 Denver CO 80211

Martin C Eckert III  
 Project Number: [none]  
 Project: Noble - Gemini B #31-11,12,13,14,25

**PH-13@12'**

**2/19/2019 1:09:00PM**

Analyte	Result	Reporting Limit	Units	Dilution	Batch	Analyst	Prepared	Analyzed	Notes
---------	--------	-----------------	-------	----------	-------	---------	----------	----------	-------

**Origins Laboratory, Inc.**  
**Y902246-10 (Soil)**

**Diesel Range Organics (DRO/TEPH) by EPA 8015C**

Diesel (C10-C28)	ND	50.0	mg/kg	1	B9B1903	KDK	02/19/2019	02/19/2019	U
Surrogate: <i>o</i> -Terphenyl	74.8 %	59-131			"	"	"	"	

**GBTEX + Napthalene by 8260C**

Gasoline Range Hydrocarbons	<b>4.63</b>	0.200	mg/kg	1	B9B1902	KDK	02/19/2019	02/19/2019	
Benzene	ND	0.002	"	"	"	KDK	"	"	U
Toluene	ND	0.002	"	"	"	KDK	"	"	U
Ethylbenzene	ND	0.002	"	"	"	KDK	"	"	U
Xylenes, total	ND	0.002	"	"	"	KDK	"	"	U
Napthalene	ND	0.008	"	"	"	KDK	"	"	U

Surrogate: 1,2-Dichloroethane-d4	89.2 %	70-130			"	"	"	"	
Surrogate: Toluene-d8	94.2 %	70-130			"	"	"	"	
Surrogate: 4-Bromofluorobenzene	96.7 %	70-130			"	"	"	"	

Origins Laboratory, Inc.



The results in this report apply to the samples analyzed in accordance with the chain of custody document. This analytical report must be reproduced in its entirety.

Eagle Environmental Consulting, Inc.  
 4101 Inca Street  
 Denver CO 80211

Martin C Eckert III  
 Project Number: [none]  
 Project: Noble - Gemini B #31-11,12,13,14,25

**Volatile Organic Compounds by GC/MS SW846 8260C - Quality Control**  
**Origins Laboratory, Inc.**

Analyte	Result	Reporting Limit	Units	Spike Level	Source Result	%REC	%REC Limits	RPD	RPD Limit	Notes
---------	--------	-----------------	-------	-------------	---------------	------	-------------	-----	-----------	-------

Batch B9B1902 - EPA 5030 (soil)

Blank (B9B1902-BLK1)

Prepared: 02/19/2019 Analyzed: 02/19/2019

Gasoline Range Hydrocarbons	ND	0.200	mg/kg							U
Benzene	ND	0.002	"							U
Toluene	ND	0.002	"							U
Ethylbenzene	ND	0.002	"							U
Xylenes, total	ND	0.002	"							U
Naphthalene	ND	0.008	"							U
Surrogate: 1,2-Dichloroethane-d4	0.12		"	0.125		94.2	70-130			
Surrogate: Toluene-d8	0.12		"	0.125		96.3	70-130			
Surrogate: 4-Bromofluorobenzene	0.12		"	0.125		96.7	70-130			

Origins Laboratory, Inc.



The results in this report apply to the samples analyzed in accordance with the chain of custody document. This analytical report must be reproduced in its entirety.

Eagle Environmental Consulting, Inc.  
 4101 Inca Street  
 Denver CO 80211

Martin C Eckert III  
 Project Number: [none]  
 Project: Noble - Gemini B #31-11,12,13,14,25

**Volatile Organic Compounds by GC/MS SW846 8260C - Quality Control**  
**Origins Laboratory, Inc.**

Analyte	Result	Reporting Limit	Units	Spike Level	Source Result	%REC	%REC Limits	RPD	RPD Limit	Notes
---------	--------	-----------------	-------	-------------	---------------	------	-------------	-----	-----------	-------

**Batch B9B1902 - EPA 5030 (soil)**

**Blank (B9B1902-BLK2)**

Prepared: 02/19/2019 Analyzed: 02/19/2019

Gasoline Range Hydrocarbons	ND	0.200	mg/kg							U
Benzene	ND	0.002	"							U
Toluene	ND	0.002	"							U
Ethylbenzene	ND	0.002	"							U
Xylenes, total	ND	0.002	"							U
Naphthalene	ND	0.008	"							U
Surrogate: 1,2-Dichloroethane-d4	0.11		"	0.125		88.8	70-130			
Surrogate: Toluene-d8	0.12		"	0.125		97.2	70-130			
Surrogate: 4-Bromofluorobenzene	0.12		"	0.125		96.0	70-130			

Origins Laboratory, Inc.



*The results in this report apply to the samples analyzed in accordance with the chain of custody document. This analytical report must be reproduced in its entirety.*

Eagle Environmental Consulting, Inc.  
 4101 Inca Street  
 Denver CO 80211

Martin C Eckert III  
 Project Number: [none]  
 Project: Noble - Gemini B #31-11,12,13,14,25

**Volatile Organic Compounds by GC/MS SW846 8260C - Quality Control**  
**Origins Laboratory, Inc.**

Analyte	Result	Reporting Limit	Units	Spike Level	Source Result	%REC	%REC Limits	RPD	RPD Limit	Notes
---------	--------	-----------------	-------	-------------	---------------	------	-------------	-----	-----------	-------

**Batch B9B1902 - EPA 5030 (soil)**

**LCS (B9B1902-BS1)**

Prepared: 02/19/2019 Analyzed: 02/19/2019

Benzene	0.104	0.002	mg/kg	0.100		104	70-130			
Toluene	0.098	0.002	"	0.100		97.7	70-130			
Ethylbenzene	0.088	0.002	"	0.100		88.2	70-130			
m,p-Xylene	0.187	0.004	"	0.200		93.5	70-130			
o-Xylene	0.089	0.002	"	0.100		88.6	70-130			
Naphthalene	0.089	0.008	"	0.100		88.6	70-130			
Surrogate: 1,2-Dichloroethane-d4	0.11		"	0.125		88.4	70-130			
Surrogate: Toluene-d8	0.12		"	0.125		97.0	70-130			
Surrogate: 4-Bromofluorobenzene	0.13		"	0.125		100	70-130			

Origins Laboratory, Inc.



*The results in this report apply to the samples analyzed in accordance with the chain of custody document. This analytical report must be reproduced in its entirety.*

Eagle Environmental Consulting, Inc.  
 4101 Inca Street  
 Denver CO 80211

Martin C Eckert III  
 Project Number: [none]  
 Project: Noble - Gemini B #31-11,12,13,14,25

**Volatile Organic Compounds by GC/MS SW846 8260C - Quality Control**  
**Origins Laboratory, Inc.**

Analyte	Result	Reporting Limit	Units	Spike Level	Source Result	%REC	%REC Limits	RPD	RPD Limit	Notes
---------	--------	-----------------	-------	-------------	---------------	------	-------------	-----	-----------	-------

**Batch B9B1902 - EPA 5030 (soil)**

**LCS (B9B1902-BS2)**

Prepared: 02/19/2019 Analyzed: 02/19/2019

Benzene	0.101	0.002	mg/kg	0.100		101	70-130			
Toluene	0.099	0.002	"	0.100		98.6	70-130			
Ethylbenzene	0.089	0.002	"	0.100		89.1	70-130			
m,p-Xylene	0.187	0.004	"	0.200		93.3	70-130			
o-Xylene	0.088	0.002	"	0.100		88.5	70-130			
Naphthalene	0.082	0.008	"	0.100		81.6	70-130			
Surrogate: 1,2-Dichloroethane-d4	0.11		"	0.125		86.8	70-130			
Surrogate: Toluene-d8	0.12		"	0.125		98.4	70-130			
Surrogate: 4-Bromofluorobenzene	0.13		"	0.125		101	70-130			

Origins Laboratory, Inc.



*The results in this report apply to the samples analyzed in accordance with the chain of custody document. This analytical report must be reproduced in its entirety.*

Eagle Environmental Consulting, Inc.  
 4101 Inca Street  
 Denver CO 80211

Martin C Eckert III  
 Project Number: [none]  
 Project: Noble - Gemini B #31-11,12,13,14,25

**Volatile Organic Compounds by GC/MS SW846 8260C - Quality Control**  
**Origins Laboratory, Inc.**

Analyte	Result	Reporting Limit	Units	Spike Level	Source Result	%REC	%REC Limits	RPD	RPD Limit	Notes
---------	--------	-----------------	-------	-------------	---------------	------	-------------	-----	-----------	-------

Batch B9B1902 - EPA 5030 (soil)

Matrix Spike (B9B1902-MS1)	Source: Y902228-01			Prepared: 02/19/2019 Analyzed: 02/19/2019						
Benzene	0.098	0.002	mg/kg	0.100	ND	98.1	70-130			
Toluene	0.092	0.002	"	0.100	ND	91.7	70-130			
Ethylbenzene	0.082	0.002	"	0.100	ND	81.7	70-130			
m,p-Xylene	0.170	0.004	"	0.200	ND	84.8	70-130			
o-Xylene	0.082	0.002	"	0.100	ND	82.0	70-130			
Naphthalene	0.079	0.008	"	0.100	ND	78.8	70-130			
Surrogate: 1,2-Dichloroethane-d4	0.12		"	0.125		93.1	70-130			
Surrogate: Toluene-d8	0.12		"	0.125		95.8	70-130			
Surrogate: 4-Bromofluorobenzene	0.13		"	0.125		100	70-130			

Origins Laboratory, Inc.



*The results in this report apply to the samples analyzed in accordance with the chain of custody document. This analytical report must be reproduced in its entirety.*

Eagle Environmental Consulting, Inc.  
 4101 Inca Street  
 Denver CO 80211

Martin C Eckert III  
 Project Number: [none]  
 Project: Noble - Gemini B #31-11,12,13,14,25

**Volatile Organic Compounds by GC/MS SW846 8260C - Quality Control**  
**Origins Laboratory, Inc.**

Analyte	Result	Reporting Limit	Units	Spike Level	Source Result	%REC	%REC Limits	RPD	RPD Limit	Notes
---------	--------	-----------------	-------	-------------	---------------	------	-------------	-----	-----------	-------

Batch B9B1902 - EPA 5030 (soil)

Matrix Spike (B9B1902-MS2)	Source: Y902228-08			Prepared: 02/19/2019 Analyzed: 02/19/2019						
Benzene	0.112	0.002	mg/kg	0.100	ND	112	70-130			
Toluene	0.110	0.002	"	0.100	ND	110	70-130			
Ethylbenzene	0.099	0.002	"	0.100	ND	99.0	70-130			
m,p-Xylene	0.208	0.004	"	0.200	ND	104	70-130			
o-Xylene	0.098	0.002	"	0.100	ND	98.4	70-130			
Naphthalene	0.084	0.008	"	0.100	ND	84.0	70-130			
Surrogate: 1,2-Dichloroethane-d4	0.11		"	0.125		89.2	70-130			
Surrogate: Toluene-d8	0.12		"	0.125		97.2	70-130			
Surrogate: 4-Bromofluorobenzene	0.13		"	0.125		100	70-130			

Origins Laboratory, Inc.



*The results in this report apply to the samples analyzed in accordance with the chain of custody document. This analytical report must be reproduced in its entirety.*

Eagle Environmental Consulting, Inc.  
 4101 Inca Street  
 Denver CO 80211

Martin C Eckert III  
 Project Number: [none]  
 Project: Noble - Gemini B #31-11,12,13,14,25

**Volatile Organic Compounds by GC/MS SW846 8260C - Quality Control**  
**Origins Laboratory, Inc.**

Analyte	Result	Reporting Limit	Units	Spike Level	Source Result	%REC	%REC Limits	RPD	RPD Limit	Notes
---------	--------	-----------------	-------	-------------	---------------	------	-------------	-----	-----------	-------

Batch B9B1902 - EPA 5030 (soil)

Matrix Spike Dup (B9B1902-MSD1)	Source: Y902228-01			Prepared: 02/19/2019 Analyzed: 02/19/2019						
Benzene	0.096	0.002	mg/kg	0.100	ND	95.6	70-130	2.56	20	
Toluene	0.088	0.002	"	0.100	ND	88.1	70-130	3.96	20	
Ethylbenzene	0.079	0.002	"	0.100	ND	79.4	70-130	2.88	20	
m,p-Xylene	0.165	0.004	"	0.200	ND	82.4	70-130	2.80	20	
o-Xylene	0.079	0.002	"	0.100	ND	79.2	70-130	3.47	20	
Naphthalene	0.085	0.008	"	0.100	ND	84.6	70-130	7.12	20	
Surrogate: 1,2-Dichloroethane-d4	0.11		"	0.125		90.2	70-130			
Surrogate: Toluene-d8	0.12		"	0.125		95.0	70-130			
Surrogate: 4-Bromofluorobenzene	0.12		"	0.125		99.6	70-130			

Origins Laboratory, Inc.



*The results in this report apply to the samples analyzed in accordance with the chain of custody document. This analytical report must be reproduced in its entirety.*

Eagle Environmental Consulting, Inc.  
 4101 Inca Street  
 Denver CO 80211

Martin C Eckert III  
 Project Number: [none]  
 Project: Noble - Gemini B #31-11,12,13,14,25

**Volatile Organic Compounds by GC/MS SW846 8260C - Quality Control**  
**Origins Laboratory, Inc.**

Analyte	Result	Reporting Limit	Units	Spike Level	Source Result	%REC	%REC Limits	RPD	RPD Limit	Notes
---------	--------	-----------------	-------	-------------	---------------	------	-------------	-----	-----------	-------

**Batch B9B1902 - EPA 5030 (soil)**

Matrix Spike Dup (B9B1902-MSD2)	Source: Y902228-08			Prepared: 02/19/2019 Analyzed: 02/19/2019						
Benzene	0.104	0.002	mg/kg	0.100	ND	104	70-130	7.71	20	
Toluene	0.101	0.002	"	0.100	ND	101	70-130	8.84	20	
Ethylbenzene	0.093	0.002	"	0.100	ND	93.1	70-130	6.14	20	
m,p-Xylene	0.195	0.004	"	0.200	ND	97.5	70-130	6.30	20	
o-Xylene	0.094	0.002	"	0.100	ND	94.2	70-130	4.42	20	
Naphthalene	0.096	0.008	"	0.100	ND	96.0	70-130	13.4	20	
Surrogate: 1,2-Dichloroethane-d4	0.11		"	0.125		88.8	70-130			
Surrogate: Toluene-d8	0.12		"	0.125		96.3	70-130			
Surrogate: 4-Bromofluorobenzene	0.13		"	0.125		101	70-130			

Origins Laboratory, Inc.



*The results in this report apply to the samples analyzed in accordance with the chain of custody document. This analytical report must be reproduced in its entirety.*

Eagle Environmental Consulting, Inc.  
 4101 Inca Street  
 Denver CO 80211

Martin C Eckert III  
 Project Number: [none]  
 Project: Noble - Gemini B #31-11,12,13,14,25

**Volatile Organic Compounds by GC/MS SW846 8260C - Quality Control**  
**Origins Laboratory, Inc.**

Analyte	Result	Reporting Limit	Units	Spike Level	Source Result	%REC	%REC Limits	RPD	RPD Limit	Notes
---------	--------	-----------------	-------	-------------	---------------	------	-------------	-----	-----------	-------

**Extractable Petroleum Hydrocarbons by 8015C - Quality Control**  
**Origins Laboratory, Inc.**

Analyte	Result	Reporting Limit	Units	Spike Level	Source Result	%REC	%REC Limits	RPD	RPD Limit	Notes
---------	--------	-----------------	-------	-------------	---------------	------	-------------	-----	-----------	-------

**Batch B9B1903 - EPA 3550B**

**Blank (B9B1903-BLK1)**

Prepared: 02/19/2019 Analyzed: 02/19/2019

Diesel (C10-C28) ND 50.0 mg/kg U

Surrogate: o-Terphenyl 41 " 50.0 81.4 59-131

**Blank (B9B1903-BLK2)**

Prepared: 02/19/2019 Analyzed: 02/19/2019

Diesel (C10-C28) ND 50.0 mg/kg U

Surrogate: o-Terphenyl 38 " 50.0 75.9 59-131

**LCS (B9B1903-BS1)**

Prepared: 02/19/2019 Analyzed: 02/19/2019

Diesel (C10-C28) 982 50.0 mg/kg 1000 98.2 64-121

Surrogate: o-Terphenyl 48 " 50.0 96.3 59-131

**LCS (B9B1903-BS2)**

Prepared: 02/19/2019 Analyzed: 02/19/2019

Diesel (C10-C28) 1040 50.0 mg/kg 1000 104 64-121

Surrogate: o-Terphenyl 52 " 50.0 104 59-131

**Matrix Spike (B9B1903-MS1)**

Source: Y902228-01

Prepared: 02/19/2019 Analyzed: 02/19/2019

Diesel (C10-C28) 1030 50.0 mg/kg 1000 ND 103 53-125

Surrogate: o-Terphenyl 50 " 50.0 100 59-131

**Matrix Spike (B9B1903-MS2)**

Source: Y902228-08

Prepared: 02/19/2019 Analyzed: 02/19/2019

Diesel (C10-C28) 922 50.0 mg/kg 1000 ND 92.2 53-125

Surrogate: o-Terphenyl 43 " 50.0 86.4 59-131

Origins Laboratory, Inc.



The results in this report apply to the samples analyzed in accordance with the chain of custody document. This analytical report must be reproduced in its entirety.

Eagle Environmental Consulting, Inc.  
 4101 Inca Street  
 Denver CO 80211

Martin C Eckert III  
 Project Number: [none]  
 Project: Noble - Gemini B #31-11,12,13,14,25

**Extractable Petroleum Hydrocarbons by 8015C - Quality Control**  
**Origins Laboratory, Inc.**

Analyte	Result	Reporting Limit	Units	Spike Level	Source Result	%REC	%REC Limits	RPD	RPD Limit	Notes
<b>Batch B9B1903 - EPA 3550B</b>										
<b>Matrix Spike Dup (B9B1903-MSD1)</b>		<b>Source: Y902228-01</b>			Prepared: 02/19/2019 Analyzed: 02/19/2019					
Diesel (C10-C28)	976	50.0	mg/kg	1000	ND	97.6	53-125	4.97	20	
Surrogate: o-Terphenyl	47		"	50.0		94.8	59-131			
<b>Matrix Spike Dup (B9B1903-MSD2)</b>		<b>Source: Y902228-08</b>			Prepared: 02/19/2019 Analyzed: 02/19/2019					
Diesel (C10-C28)	1000	50.0	mg/kg	1000	ND	100	53-125	8.50	20	
Surrogate: o-Terphenyl	47		"	50.0		94.3	59-131			

Origins Laboratory, Inc.



*The results in this report apply to the samples analyzed in accordance with the chain of custody document. This analytical report must be reproduced in its entirety.*

Eagle Environmental Consulting, Inc.  
4101 Inca Street  
Denver CO 80211

Martin C Eckert III  
Project Number: [none]  
Project: Noble - Gemini B #31-11,12,13,14,25

---

**Notes and Definitions**

U Sample is Non-Detect.

ND Analyte NOT DETECTED at or above the reporting limit

RPD Relative Percent Difference

All soil results are reported at a wet weight basis.

Origins Laboratory, Inc.



*The results in this report apply to the samples analyzed in accordance with the chain of custody document. This analytical report must be reproduced in its entirety.*

---

Jen Pellegrini For Noelle Doyle Mathis, President



February 21, 2019

Eagle Environmental Consulting, Inc.

Martin C Eckert III

4101 Inca Street

Denver

CO 80211

**Project Name - Noble - Gemini B  
#31-11,12,13,14,25**

**Project Number - [none]**

Attached are your analytical results for Noble - Gemini B #31-11,12,13,14,25 received by Origins Laboratory, Inc. February 20, 2019. This project is associated with Origins project number Y902267-01.

The analytical results in the following report were analyzed under the guidelines of EPA Methods. These methods are identified as follows; "SW" are defined in SW-846, "EPA" are defined in 40CFR part 136 and "SM" are defined in the most current revision of Standard Methods For the Examination of Water and Wastewater.

The analytical results apply specifically to the samples and analyses specified per the attached Chain of Custody. As such, this report shall not be reproduced except in full, without the written approval of Origin's laboratory.

Unless otherwise noted, the analytical results for all soil samples are reported on a wet weight basis. All analytical analyses were performed under NELAP guidelines unless noted by a data qualifier.

Any holding time exceedances, deviations from the method specifications or deviations from Origins Laboratory's Standard Operating Procedures are outlined in the case narrative.

Thank you for selecting Origins for your analytical needs. Please contact us with any questions concerning this report, or if we can help with anything at all.

Origins Laboratory, Inc.  
303.433.1322  
o-squad@oelabinc.com



1725 Elk Place, Denver, CO 80211 | Phone: 303.433.1322 | Fax: 303.265.9645

Eagle Environmental Consulting, Inc.  
4101 Inca Street  
Denver CO 80211

Martin C Eckert III  
Project Number: [none]  
Project: Noble - Gemini B #31-11,12,13,14,25

CROSS REFERENCE REPORT

Sample ID	Laboratory ID	Matrix	Date Sampled	Date Received
PH-16@12'	Y902267-01	Soil	February 20, 2019 10:45	02/20/2019 16:30
PH-24@9'	Y902267-02	Soil	February 20, 2019 14:22	02/20/2019 16:30
PH-25@9'	Y902267-03	Soil	February 20, 2019 14:49	02/20/2019 16:30
PH-26@12'	Y902267-04	Soil	February 20, 2019 15:14	02/20/2019 16:30

Origins Laboratory, Inc.



*The results in this report apply to the samples analyzed in accordance with the chain of custody document. This analytical report must be reproduced in its entirety.*



Eagle Environmental Consulting, Inc.  
 4101 Inca Street  
 Denver CO 80211

Martin C Eckert III  
 Project Number: [none]  
 Project: Noble - Gemini B #31-11,12,13,14,25

Origins Laboratory

F-012207-01-R1  
 Effective Date: 01/09/12

**Sample Receipt Checklist**

Origins Work Order: Y900267

Client: Eagle

Client Project ID: Noble - Gemini B #31-11,12,13,14,25

Checklist Completed by: JG

Shipped Via: HD

(UPS, FedEx, Hand Delivered, Pick-up, etc.)

Date/time completed: 2/20/2019

Airbill #: N/A

Matrix(s) Received: (Check all that apply):  Soil/Solid  Water  Other: \_\_\_\_\_

Cooler Number/Temperature: 1 / 2.4 °C \_\_\_\_\_ °C \_\_\_\_\_ °C \_\_\_\_\_ °C (Describe)

Thermometer ID: T003

Requirement Description	Yes	No	N/A	Comments (if any)
If samples require cooling, was the temperature between 0°C to ≤ 6°C <sup>(1)?</sup>	<input checked="" type="checkbox"/>			
Is there ice present (document if blue ice is used)	<input checked="" type="checkbox"/>			
Are custody seals present on cooler? (if so, document in comments if they are signed and dated, broken or intact)		<input checked="" type="checkbox"/>		
Are custody seals present on each sample container? (if so, document in comments if they are signed and dated, broken or intact)		<input checked="" type="checkbox"/>		
Were all samples received intact <sup>(1)?</sup>	<input checked="" type="checkbox"/>			
Was adequate sample volume provided <sup>(1)?</sup>	<input checked="" type="checkbox"/>			
Are short holding time analytes or samples with HTs due within 48 hours present <sup>(1)?</sup>		<input checked="" type="checkbox"/>		
Is a chain-of-custody (COC) present and filled out completely <sup>(1)?</sup>	<input checked="" type="checkbox"/>			
Does the COC agree with the number and type of sample bottles received <sup>(1)?</sup>	<input checked="" type="checkbox"/>			
Do the sample IDs on the bottle labels match the COC <sup>(1)?</sup>	<input checked="" type="checkbox"/>			
Is the COC properly relinquished by the client with date and time recorded <sup>(1)?</sup>	<input checked="" type="checkbox"/>			
For volatiles in water – is there headspace (> ¼ inch bubble) present? <b>If yes, contact client and note in narrative.</b>			<input checked="" type="checkbox"/>	
Are samples preserved that require preservation and was it checked <sup>(1)?</sup> (note ID of confirmation instrument used in comments) / (preservation is not confirmed for subcontracted analyses in order to insure sample integrity)/(pH <2 for samples preserved with HNO <sub>3</sub> , HCL, H <sub>2</sub> SO <sub>4</sub> ) / (pH >10 for samples preserved with NaAsO <sub>2</sub> +NaOH, ZnAc+NaOH)		<input checked="" type="checkbox"/>		
Additional Comments (if any):				

<sup>(1)</sup>If NO, then contact the client before proceeding with analysis and note date/time and person contacted as well as the corrective action to in the additional comments (above) and the case narrative.

Reviewed by (Project Manager) JG

Date/Time Reviewed 2/20/19

Origins Laboratory, Inc.



The results in this report apply to the samples analyzed in accordance with the chain of custody document. This analytical report must be reproduced in its entirety.

Eagle Environmental Consulting, Inc.  
 4101 Inca Street  
 Denver CO 80211

Martin C Eckert III  
 Project Number: [none]  
 Project: Noble - Gemini B #31-11,12,13,14,25

**PH-16@12'**  
**2/20/2019 10:45:00AM**

Analyte	Result	Reporting Limit	Units	Dilution	Batch	Analyst	Prepared	Analyzed	Notes
---------	--------	-----------------	-------	----------	-------	---------	----------	----------	-------

**Origins Laboratory, Inc.**  
**Y902267-01 (Soil)**

**Diesel Range Organics (DRO/TEPH) by EPA 8015C**

Diesel (C10-C28)	142	50.0	mg/kg	1	B9B2002	JTD	02/20/2019	02/20/2019
------------------	-----	------	-------	---	---------	-----	------------	------------

Surrogate: <i>o</i> -Terphenyl	72.2 %	59-131			"	"	"	"
--------------------------------	--------	--------	--	--	---	---	---	---

**GBTEX + Napthalene by 8260C**

Gasoline Range Hydrocarbons	178	5.00	mg/kg	25	B9B2003	KDK	02/20/2019	02/20/2019	
Benzene	ND	0.050	"	"	"	KDK	"	"	U
Toluene	ND	0.050	"	"	"	KDK	"	"	U
Ethylbenzene	ND	0.050	"	"	"	KDK	"	"	U
Xylenes, total	ND	0.050	"	"	"	KDK	"	"	U
Naphthalene	ND	0.200	"	"	"	KDK	"	"	U

Surrogate: 1,2-Dichloroethane-d4	83.3 %	70-130			"	"	"	"
Surrogate: Toluene-d8	96.6 %	70-130			"	"	"	"
Surrogate: 4-Bromofluorobenzene	96.0 %	70-130			"	"	"	"

Origins Laboratory, Inc.



The results in this report apply to the samples analyzed in accordance with the chain of custody document. This analytical report must be reproduced in its entirety.

Eagle Environmental Consulting, Inc.  
 4101 Inca Street  
 Denver CO 80211

Martin C Eckert III  
 Project Number: [none]  
 Project: Noble - Gemini B #31-11,12,13,14,25

PH-24@9'  
 2/20/2019 2:22:00PM

Analyte	Result	Reporting Limit	Units	Dilution	Batch	Analyst	Prepared	Analyzed	Notes
---------	--------	-----------------	-------	----------	-------	---------	----------	----------	-------

**Origins Laboratory, Inc.**  
 Y902267-02 (Soil)

**Diesel Range Organics (DRO/TEPH) by EPA 8015C**

Diesel (C10-C28)	1250	50.0	mg/kg	1	B9B2002	JTD	02/20/2019	02/20/2019
------------------	------	------	-------	---	---------	-----	------------	------------

Surrogate: o-Terphenyl	104 %	59-131			"	"	"	"
------------------------	-------	--------	--	--	---	---	---	---

**GBTEX + Napthalene by 8260C**

Gasoline Range Hydrocarbons	10500	500	mg/kg	2500	B9B2003	KDK	02/20/2019	02/20/2019
Benzene	24.8	4.98	"	"	"	KDK	"	"
Toluene	174	4.98	"	"	"	KDK	"	"
Ethylbenzene	17.8	4.98	"	"	"	KDK	"	"
Xylenes, total	282	4.98	"	"	"	KDK	"	"
Naphthalene	1.14	0.200	"	25	"	KDK	"	"

Surrogate: 1,2-Dichloroethane-d4	84.3 %	70-130			"	"	"	"
Surrogate: Toluene-d8	96.6 %	70-130			"	"	"	"
Surrogate: 4-Bromofluorobenzene	99.0 %	70-130			"	"	"	"

Origins Laboratory, Inc.



The results in this report apply to the samples analyzed in accordance with the chain of custody document. This analytical report must be reproduced in its entirety.

Eagle Environmental Consulting, Inc.  
 4101 Inca Street  
 Denver CO 80211

Martin C Eckert III  
 Project Number: [none]  
 Project: Noble - Gemini B #31-11,12,13,14,25

PH-25@9'

2/20/2019 2:49:00PM

Analyte	Result	Reporting Limit	Units	Dilution	Batch	Analyst	Prepared	Analyzed	Notes
---------	--------	-----------------	-------	----------	-------	---------	----------	----------	-------

**Origins Laboratory, Inc.**  
 Y902267-03 (Soil)

**Diesel Range Organics (DRO/TEPH) by EPA 8015C**

Diesel (C10-C28)	2380	50.0	mg/kg	1	B9B2002	JTD	02/20/2019	02/20/2019
------------------	------	------	-------	---	---------	-----	------------	------------

Surrogate: o-Terphenyl	111 %	59-131			"	"	"	"
------------------------	-------	--------	--	--	---	---	---	---

**GBTEX + Napthalene by 8260C**

Gasoline Range Hydrocarbons	14200	500	mg/kg	2500	B9B2003	KDK	02/20/2019	02/21/2019
Benzene	26.1	4.98	"	"	"	KDK	"	"
Toluene	196	4.98	"	"	"	KDK	"	"
Ethylbenzene	21.9	4.98	"	"	"	KDK	"	"
Xylenes, total	329	4.98	"	"	"	KDK	"	"
Naphthalene	1.41	0.200	"	25	"	KDK	"	02/21/2019

Surrogate: 1,2-Dichloroethane-d4	82.3 %	70-130			"	"		02/20/2019
Surrogate: Toluene-d8	97.3 %	70-130			"	"		"
Surrogate: 4-Bromofluorobenzene	96.6 %	70-130			"	"		"

Origins Laboratory, Inc.



The results in this report apply to the samples analyzed in accordance with the chain of custody document. This analytical report must be reproduced in its entirety.

Eagle Environmental Consulting, Inc.  
 4101 Inca Street  
 Denver CO 80211

Martin C Eckert III  
 Project Number: [none]  
 Project: Noble - Gemini B #31-11,12,13,14,25

**PH-26@12'**  
**2/20/2019 3:14:00PM**

Analyte	Result	Reporting Limit	Units	Dilution	Batch	Analyst	Prepared	Analyzed	Notes
---------	--------	-----------------	-------	----------	-------	---------	----------	----------	-------

**Origins Laboratory, Inc.**  
**Y902267-04 (Soil)**

**Diesel Range Organics (DRO/TEPH) by EPA 8015C**

Diesel (C10-C28)	115	50.0	mg/kg	1	B9B2002	JTD	02/20/2019	02/20/2019
------------------	-----	------	-------	---	---------	-----	------------	------------

Surrogate: <i>o</i> -Terphenyl	77.5 %	59-131			"	"	"	"
--------------------------------	--------	--------	--	--	---	---	---	---

**GBTEX + Napthalene by 8260C**

Gasoline Range Hydrocarbons	366	5.00	mg/kg	25	B9B2003	KDK	02/20/2019	02/20/2019	
Benzene	ND	0.050	"	"	"	KDK	"	"	U
Toluene	ND	0.050	"	"	"	KDK	"	"	U
Ethylbenzene	0.185	0.050	"	"	"	KDK	"	"	
Xylenes, total	0.768	0.050	"	"	"	KDK	"	"	
Naphthalene	ND	0.200	"	"	"	KDK	"	"	U

Surrogate: 1,2-Dichloroethane-d4	81.9 %	70-130			"	"	"	"
Surrogate: Toluene-d8	95.8 %	70-130			"	"	"	"
Surrogate: 4-Bromofluorobenzene	116 %	70-130			"	"	"	"

Origins Laboratory, Inc.



The results in this report apply to the samples analyzed in accordance with the chain of custody document. This analytical report must be reproduced in its entirety.

Eagle Environmental Consulting, Inc.  
 4101 Inca Street  
 Denver CO 80211

Martin C Eckert III  
 Project Number: [none]  
 Project: Noble - Gemini B #31-11,12,13,14,25

**Volatile Organic Compounds by GC/MS SW846 8260C - Quality Control**  
**Origins Laboratory, Inc.**

Analyte	Result	Reporting Limit	Units	Spike Level	Source Result	%REC	%REC Limits	RPD	RPD Limit	Notes
---------	--------	-----------------	-------	-------------	---------------	------	-------------	-----	-----------	-------

**Batch B9B2003 - EPA 5030 (soil)**

**Blank (B9B2003-BLK1)**

Prepared: 02/20/2019 Analyzed: 02/20/2019

Gasoline Range Hydrocarbons	ND	0.200	mg/kg							U
Benzene	ND	0.002	"							U
Toluene	ND	0.002	"							U
Ethylbenzene	ND	0.002	"							U
Xylenes, total	ND	0.002	"							U
Naphthalene	ND	0.008	"							U
Surrogate: 1,2-Dichloroethane-d4	0.11		"	0.125		85.4	70-130			
Surrogate: Toluene-d8	0.12		"	0.125		97.3	70-130			
Surrogate: 4-Bromofluorobenzene	0.12		"	0.125		97.8	70-130			

Origins Laboratory, Inc.



*The results in this report apply to the samples analyzed in accordance with the chain of custody document. This analytical report must be reproduced in its entirety.*

Eagle Environmental Consulting, Inc.  
 4101 Inca Street  
 Denver CO 80211

Martin C Eckert III  
 Project Number: [none]  
 Project: Noble - Gemini B #31-11,12,13,14,25

**Volatile Organic Compounds by GC/MS SW846 8260C - Quality Control**  
**Origins Laboratory, Inc.**

Analyte	Result	Reporting Limit	Units	Spike Level	Source Result	%REC	%REC Limits	RPD	RPD Limit	Notes
---------	--------	-----------------	-------	-------------	---------------	------	-------------	-----	-----------	-------

Batch B9B2003 - EPA 5030 (soil)

**LCS (B9B2003-BS1)**

Prepared: 02/20/2019 Analyzed: 02/20/2019

Benzene	0.096	0.002	mg/kg	0.100		95.5	70-130			
Toluene	0.093	0.002	"	0.100		93.0	70-130			
Ethylbenzene	0.088	0.002	"	0.100		87.5	70-130			
m,p-Xylene	0.183	0.004	"	0.200		91.3	70-130			
o-Xylene	0.086	0.002	"	0.100		86.1	70-130			
Naphthalene	0.082	0.008	"	0.100		82.1	70-130			
Surrogate: 1,2-Dichloroethane-d4	0.10		"	0.125		83.3	70-130			
Surrogate: Toluene-d8	0.12		"	0.125		97.2	70-130			
Surrogate: 4-Bromofluorobenzene	0.13		"	0.125		105	70-130			

Origins Laboratory, Inc.



*The results in this report apply to the samples analyzed in accordance with the chain of custody document. This analytical report must be reproduced in its entirety.*

Eagle Environmental Consulting, Inc.  
 4101 Inca Street  
 Denver CO 80211

Martin C Eckert III  
 Project Number: [none]  
 Project: Noble - Gemini B #31-11,12,13,14,25

**Volatile Organic Compounds by GC/MS SW846 8260C - Quality Control**  
**Origins Laboratory, Inc.**

Analyte	Result	Reporting Limit	Units	Spike Level	Source Result	%REC	%REC Limits	RPD	RPD Limit	Notes
---------	--------	-----------------	-------	-------------	---------------	------	-------------	-----	-----------	-------

Batch B9B2003 - EPA 5030 (soil)

Matrix Spike (B9B2003-MS1)	Source: Y902255-01			Prepared: 02/20/2019 Analyzed: 02/20/2019						
Benzene	0.092	0.002	mg/kg	0.100	ND	92.1	70-130			
Toluene	0.087	0.002	"	0.100	ND	87.1	70-130			
Ethylbenzene	0.078	0.002	"	0.100	ND	78.4	70-130			
m,p-Xylene	0.162	0.004	"	0.200	ND	81.0	70-130			
o-Xylene	0.077	0.002	"	0.100	ND	77.4	70-130			
Naphthalene	0.077	0.008	"	0.100	0.001	75.7	70-130			
Surrogate: 1,2-Dichloroethane-d4	0.10		"	0.125		82.7	70-130			
Surrogate: Toluene-d8	0.12		"	0.125		96.9	70-130			
Surrogate: 4-Bromofluorobenzene	0.13		"	0.125		100	70-130			

Origins Laboratory, Inc.



*The results in this report apply to the samples analyzed in accordance with the chain of custody document. This analytical report must be reproduced in its entirety.*

Eagle Environmental Consulting, Inc.  
 4101 Inca Street  
 Denver CO 80211

Martin C Eckert III  
 Project Number: [none]  
 Project: Noble - Gemini B #31-11,12,13,14,25

**Volatile Organic Compounds by GC/MS SW846 8260C - Quality Control**  
**Origins Laboratory, Inc.**

Analyte	Result	Reporting Limit	Units	Spike Level	Source Result	%REC	%REC Limits	RPD	RPD Limit	Notes
---------	--------	-----------------	-------	-------------	---------------	------	-------------	-----	-----------	-------

Batch B9B2003 - EPA 5030 (soil)

Matrix Spike Dup (B9B2003-MSD1)	Source: Y902255-01			Prepared: 02/20/2019 Analyzed: 02/20/2019						
Benzene	0.100	0.002	mg/kg	0.100	ND	100	70-130	8.43	20	
Toluene	0.094	0.002	"	0.100	ND	93.7	70-130	7.34	20	
Ethylbenzene	0.084	0.002	"	0.100	ND	83.8	70-130	6.68	20	
m,p-Xylene	0.174	0.004	"	0.200	ND	86.9	70-130	7.01	20	
o-Xylene	0.083	0.002	"	0.100	ND	82.5	70-130	6.45	20	
Naphthalene	0.084	0.008	"	0.100	0.001	82.9	70-130	8.96	20	
Surrogate: 1,2-Dichloroethane-d4	0.10		"	0.125		82.9	70-130			
Surrogate: Toluene-d8	0.12		"	0.125		96.5	70-130			
Surrogate: 4-Bromofluorobenzene	0.13		"	0.125		100	70-130			

Origins Laboratory, Inc.



*The results in this report apply to the samples analyzed in accordance with the chain of custody document. This analytical report must be reproduced in its entirety.*

Eagle Environmental Consulting, Inc.  
 4101 Inca Street  
 Denver CO 80211

Martin C Eckert III  
 Project Number: [none]  
 Project: Noble - Gemini B #31-11,12,13,14,25

**Volatile Organic Compounds by GC/MS SW846 8260C - Quality Control**  
**Origins Laboratory, Inc.**

Analyte	Result	Reporting Limit	Units	Spike Level	Source Result	%REC	%REC Limits	RPD	RPD Limit	Notes
---------	--------	-----------------	-------	-------------	---------------	------	-------------	-----	-----------	-------

**Extractable Petroleum Hydrocarbons by 8015C - Quality Control**  
**Origins Laboratory, Inc.**

Analyte	Result	Reporting Limit	Units	Spike Level	Source Result	%REC	%REC Limits	RPD	RPD Limit	Notes
---------	--------	-----------------	-------	-------------	---------------	------	-------------	-----	-----------	-------

**Batch B9B2002 - EPA 3550B**

<b>Blank (B9B2002-BLK1)</b>					Prepared: 02/20/2019 Analyzed: 02/20/2019					
Diesel (C10-C28)	ND	50.0	mg/kg							U
Surrogate: o-Terphenyl	41		"	50.0		81.4	59-131			
<b>Blank (B9B2002-BLK2)</b>					Prepared: 02/20/2019 Analyzed: 02/20/2019					
Diesel (C10-C28)	ND	50.0	mg/kg							U
Surrogate: o-Terphenyl	44		"	50.0		87.5	59-131			
<b>LCS (B9B2002-BS1)</b>					Prepared: 02/20/2019 Analyzed: 02/20/2019					
Diesel (C10-C28)	873	50.0	mg/kg	1000		87.3	64-121			
Surrogate: o-Terphenyl	42		"	50.0		84.5	59-131			
<b>LCS (B9B2002-BS2)</b>					Prepared: 02/20/2019 Analyzed: 02/20/2019					
Diesel (C10-C28)	953	50.0	mg/kg	1000		95.3	64-121			
Surrogate: o-Terphenyl	47		"	50.0		93.9	59-131			
<b>Matrix Spike (B9B2002-MS1)</b>		<b>Source: Y902253-01</b>			Prepared: 02/20/2019 Analyzed: 02/20/2019					
Diesel (C10-C28)	1060	50.0	mg/kg	1000	70.3	98.6	53-125			
Surrogate: o-Terphenyl	49		"	50.0		97.0	59-131			
<b>Matrix Spike (B9B2002-MS2)</b>		<b>Source: Y902258-01</b>			Prepared: 02/20/2019 Analyzed: 02/20/2019					
Diesel (C10-C28)	1060	50.0	mg/kg	1000	ND	106	53-125			
Surrogate: o-Terphenyl	48		"	50.0		96.2	59-131			

Origins Laboratory, Inc.



The results in this report apply to the samples analyzed in accordance with the chain of custody document. This analytical report must be reproduced in its entirety.

Eagle Environmental Consulting, Inc.  
 4101 Inca Street  
 Denver CO 80211

Martin C Eckert III  
 Project Number: [none]  
 Project: Noble - Gemini B #31-11,12,13,14,25

**Extractable Petroleum Hydrocarbons by 8015C - Quality Control**  
**Origins Laboratory, Inc.**

Analyte	Result	Reporting Limit	Units	Spike Level	Source Result	%REC	%REC Limits	RPD	RPD Limit	Notes
<b>Batch B9B2002 - EPA 3550B</b>										
<b>Matrix Spike Dup (B9B2002-MSD1)</b>		<b>Source: Y902253-01</b>			Prepared: 02/20/2019 Analyzed: 02/20/2019					
Diesel (C10-C28)	1020	50.0	mg/kg	1000	70.3	95.3	53-125	3.16	20	
Surrogate: o-Terphenyl	46		"	50.0		92.5	59-131			
<b>Matrix Spike Dup (B9B2002-MSD2)</b>		<b>Source: Y902258-01</b>			Prepared: 02/20/2019 Analyzed: 02/20/2019					
Diesel (C10-C28)	939	50.0	mg/kg	1000	ND	93.9	53-125	11.7	20	
Surrogate: o-Terphenyl	44		"	50.0		88.5	59-131			

Origins Laboratory, Inc.



*The results in this report apply to the samples analyzed in accordance with the chain of custody document. This analytical report must be reproduced in its entirety.*

Eagle Environmental Consulting, Inc.  
4101 Inca Street  
Denver CO 80211

Martin C Eckert III  
Project Number: [none]  
Project: Noble - Gemini B #31-11,12,13,14,25

---

### Notes and Definitions

U Sample is Non-Detect.

ND Analyte NOT DETECTED at or above the reporting limit

RPD Relative Percent Difference

All soil results are reported at a wet weight basis.

Origins Laboratory, Inc.



*The results in this report apply to the samples analyzed in accordance with the chain of custody document. This analytical report must be reproduced in its entirety.*

---

Jen Pellegrini For Noelle Doyle Mathis, President