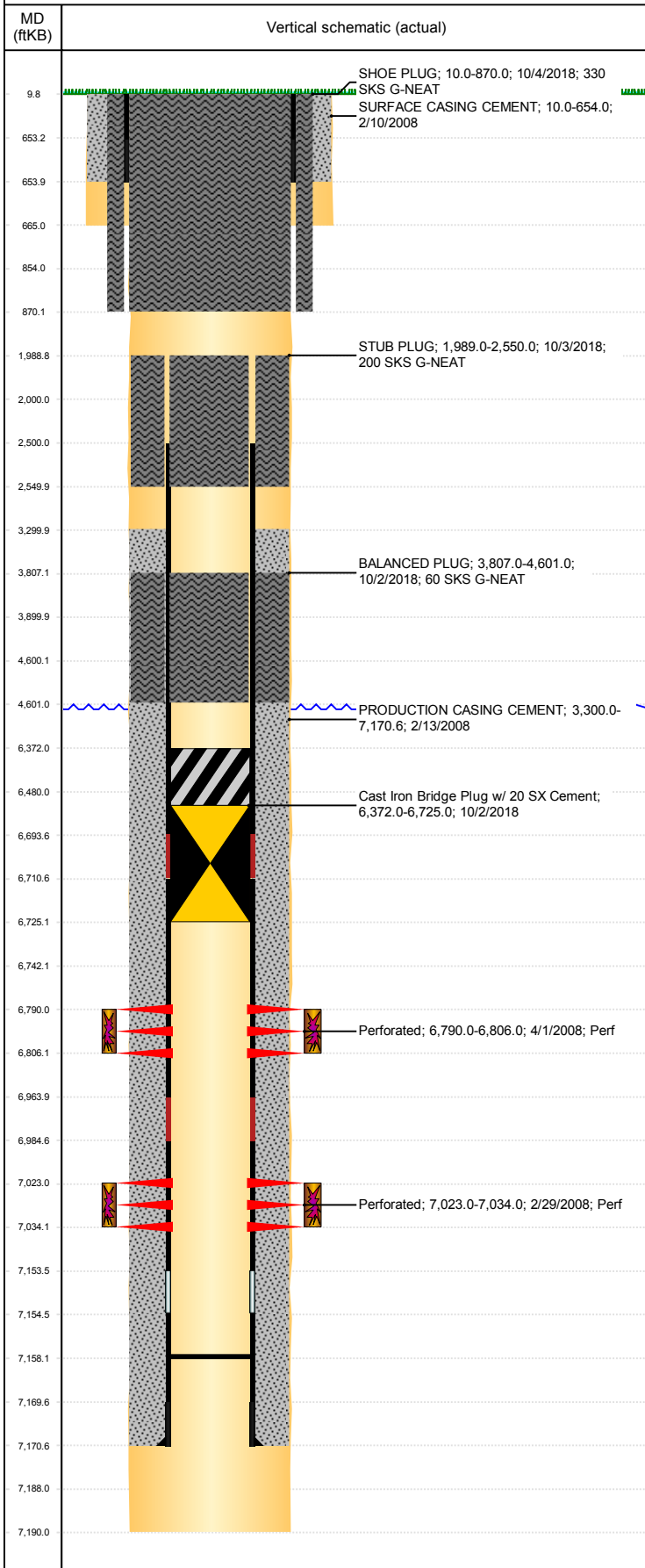


Well Name: MCWILLIAMS D29-32

VERTICAL, ORIGINAL HOLE, 4/4/2019 11:23:35 AM



Well Header									
API 05-123-25426		Business Unit DJ BASIN		District 15		Well Config VERTICAL			
KB - GL / MSL (ft... 10.00		Spud Date 2/9/2008		P & A Date 1/22/2019		Well Production Status PA		SoRT Yes	
Comment 318Ae LOCATION									
Surface Location (Congressional)									
Qtr 3 SE	Qtr 4 NE	Section 30	Twonshp 3	Twonsh... N	Range 64	Rng E/... W	Actual Latitude (°) 40.19643864	Actual Longitude (°) -104.58510528	
Wellbore Sections									
Section Des		Size (in)			Act Top, MD (ftKB)		Act Btm, MD (ftKB)		
SURFACE		12 1/4			10		665		
PRODUCTION		7 7/8			665		7,190		
Casing Strings									
Csg Des		Run Date		OD (in)	Wt/Len (lb/ft)	Grade	Top, MD (ftKB)	MD (ftKB)	
Surface		2/10/2008		8 5/8	24.00	J-55	10.0	654.0	
Production		2/13/2008		4 1/2	11.60	M-80	10.0	7,170.6	
Cement									
Des				Start Date		Top (ftKB)		Btm (ftKB)	
SURFACE CASING CEMENT				2/10/2008		10.0		654.0	
PRODUCTION CASING CEMENT				2/13/2008		3,300.0		7,170.6	
BALANCED PLUG				10/2/2018		3,807.0		4,601.0	
STUB PLUG				10/3/2018		1,989.0		2,550.0	
SHOE PLUG				10/4/2018		10.0		870.0	
Zone Statuses									
Zone Name	Status Date	Status	Fluid Type	Job			Prod Method		
CODELL	2/22/2010	PR	Water	ABANDON WELL, 10/1/2018 06:00			Flowing		
CODELL	10/2/2018	P&A	Water						
NIOBRARA	3/22/2017	SI		ABANDON WELL, 10/1/2018 06:00					
NIOBRARA	10/2/2018	P&A	Water						
Perforation Data									
Linked Zone		Bnch/Stg	Entered Shot Total	Top (ftKB)		Btm (ftKB)		Date	
NIOBRARA, ORIGINAL HOLE		B	64	6,790.00		6,806.00		4/1/2008	
CODELL, ORIGINAL HOLE			44	7,023.00		7,034.00		2/29/2008	
Stimulation Intervals									
Zone			Start Date		Top (ftKB)		Btm (ftKB)		
NIOBRARA, ORIGINAL HOLE			4/1/2008		6,790.0		6,806.0		
CODELL, ORIGINAL HOLE			4/1/2008		7,023.0		7,034.0		
Other In Hole									
Run Date		Des			OD (in)	Top (ftKB)	Btm (ftKB)		
10/2/2018		Cast Iron Bridge Plug w/ 20 SX Cement			4	6,372.0	6,725.0		
Logs									
Date		Type				Top, MD (ftKB)		Btm, MD (ftKB)	
2/13/2008		Caliper/Comp. Density/Neutron/GR/SP/ML				2,750.0		7,190.0	
2/13/2008		DIL/GR/SP/Caliper				654.0		7,190.0	
2/27/2008		CBL/CCL/GR				3,100.0		7,114.0	
3/29/2011		GYRO				10.0		7,000.0	
Plug Back Total Depths									
Date		Type		Com				Depth (ftKB)	
2/14/2008		FLOAT COLLAR						7,158.0	